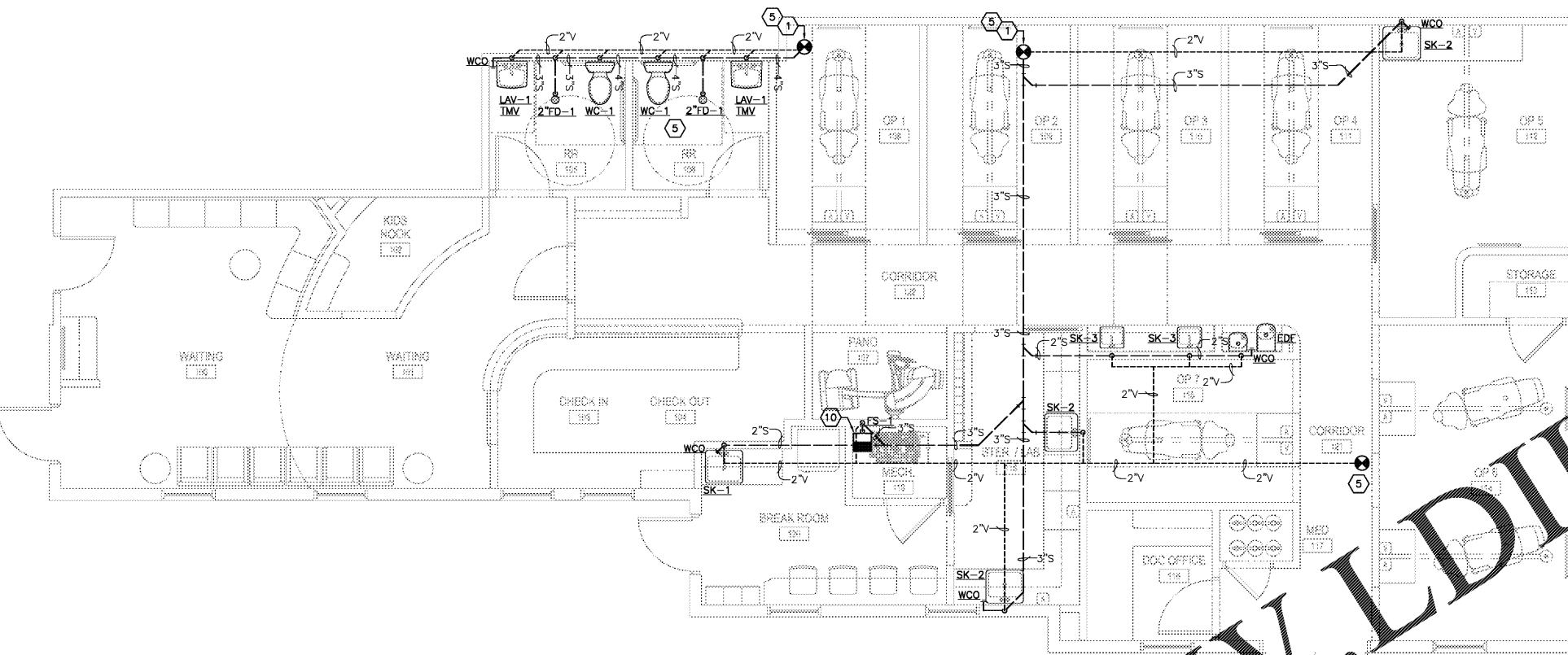


PLUMBING GENERAL NOTES:

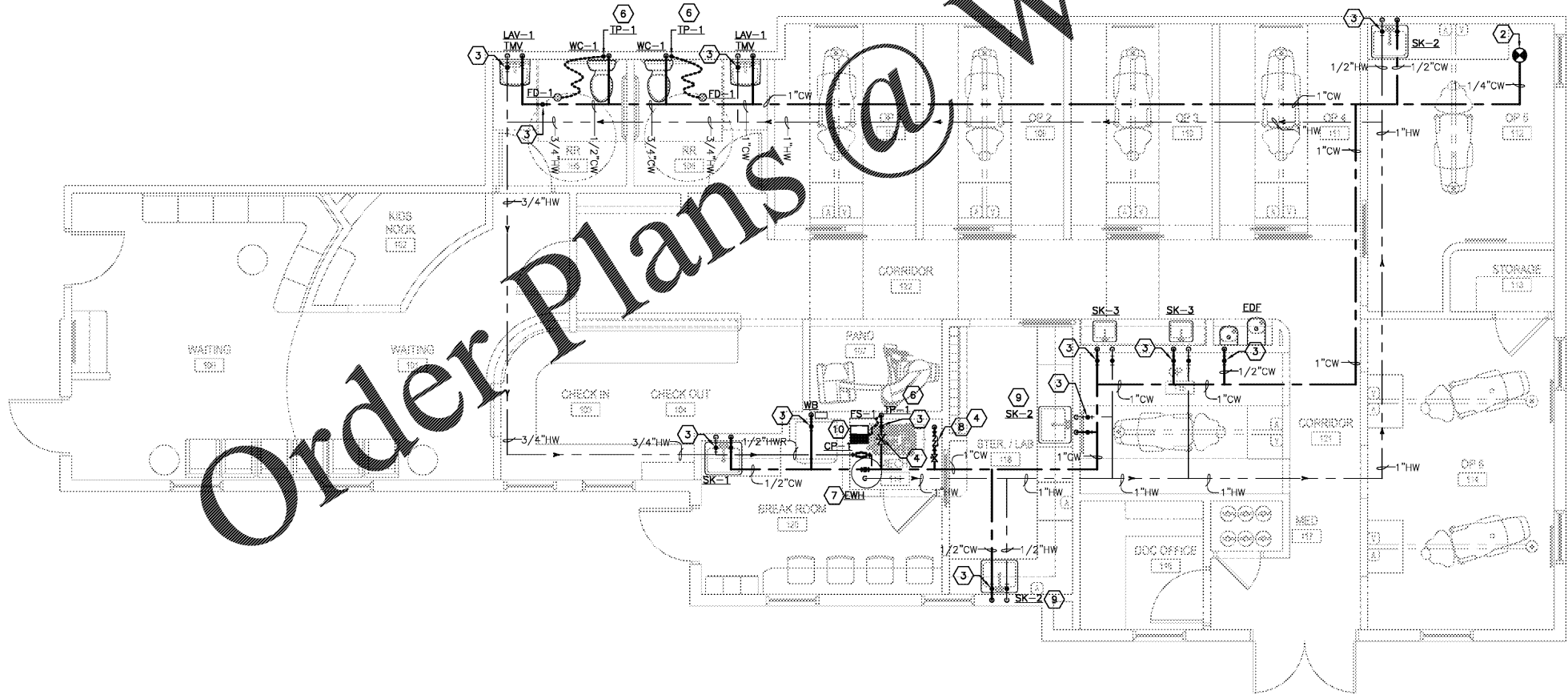
- A. DRAWING IS DIAGRAMMATIC ONLY. CONTRACTOR SHALL COORDINATE EXACT LOCATIONS OF PIPING, DEVICES AND EQUIPMENT WITH BUILDING ELEMENTS AND THE WORK OF OTHER TRADES.
- B. CONTRACTOR TO INSTALL ALL VTR AT A MINIMUM OF 10' HORIZONTALLY FROM ANY AIR INTAKE AND 3' VERTICALLY FROM ANY AIR INACCESSIBLE VERIFY EXISTING ROOF EQUIPMENT PRIOR TO PENETRATING THE ROOF.
- C. CONTRACTOR TO BE RESPONSIBLE FOR DOMESTIC WATER SYSTEMS NOT EXCEED 78psi. PROVIDE PRV AS REQUIRED. COORDINATE WITH MECHANICAL CONTRACTOR FOR CONDENSATE PIPING CONNECTION REQUIREMENTS PER LOCAL CODE AMENDMENTS.
- D. COORDINATE WITH MECHANICAL CONTRACTOR FOR CONDENSATE PIPING CONNECTION REQUIREMENTS PER LOCAL CODE AMENDMENTS.
- E. INSTALL CAST IRON PIPE IN ALL PLENUM AND RAISED SPACES.

PLUMBING KEYED NOTES:

1. CONNECT TO EXISTING SANITARY. FIELD VERIFY LOCATION, DIRECTION OF FLOW, AND INVERT. COORDINATE WITH CONTRACTOR.
2. CONNECT TO EXISTING WATER. FIELD VERIFY LOCATION. COORDINATE WITH CONTRACTOR.
3. WATER HAMMER ARRESTOR, PROVIDE ACCESS PANEL WHERE LOCATED IN AN INACCESSIBLE WALL/CEILING. PANEL SHALL BE 12"x12" PAINTED TO MATCH WALL/CEILING.
4. BALL VALVE ABOVE CEILING. PROVIDE ACCESS PANEL WHERE LOCATED IN AN INACCESSIBLE CEILING. PANEL SHALL BE 12"x12" PAINTED TO MATCH CEILING. PROVIDE MARKING OF VALVE LOCATION ALONG THE CEILING TILE.
5. CONNECT TO EXISTING VENT. FIELD VERIFY LOCATION. COORDINATE WITH CONTRACTOR.
6. PROVIDE IRAP PRIMER (IP-1). REFER TO DETAIL 2/P001.
7. COORDINATE WATER HEATER LOCATION IN MECH RM. HEATER TO BE WALL MOUNTED. REFER TO DETAIL 4/P001.
8. PROVIDE REDUCE PRESSURE ZONE BACKFLOW PREVENTER CONFORMING WITH ASSE1013 OR LOCAL CODE AMENDMENTS. PROVIDE ACCESS PANEL WHERE LOCATED IN AN INACCESSIBLE CEILING. PAINT TO MATCH CEILING. ROUTE WATER OUTLET TO NEAREST FLOOR DRAIN.
9. PROVIDE REPLACEABLE BOTTLE PLASTER TRAP IN SINK. COORDINATE WITH DENTAL EQPMT SUPPLIER. REFER TO MANUFACTURER INSTRUCTIONS MANUAL FOR COMPLETE CONNECTION REQUIREMENTS.
10. COORDINATE WITH G.C. FOR FINAL LOCATION OF FLOOR SINK AS NECESSARY FOR DENTAL VACUUM EQPMT DISCHARGE.

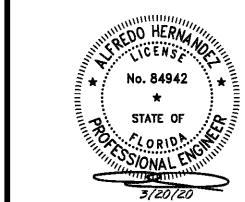


1 PLUMBING PLAN - WASTE AND VENT
1/4" = 1'-0"



2 PLUMBING PLAN - DOMESTIC WATER
1/4" = 1'-0"

Order Plans @ www.LDILine.com



ISSUE

NO.	DATE	DESCRIPTION
1	03-20-2020	PERMIT DOCUMENTS

Project No. HMB PROJ #20055 Date: 03/20/20
Sheet Title:

PLUMBING PLAN

Page No. **P100**