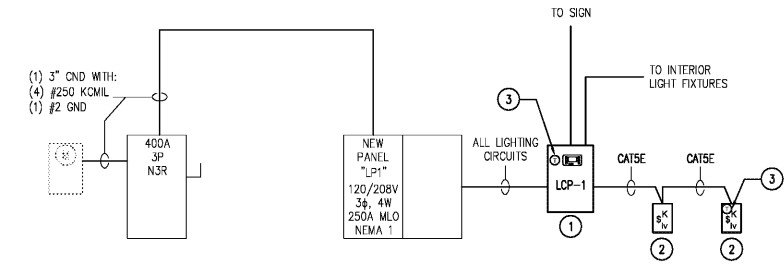


Order Plans @ WWW.WWENGINEERING.COM

PANEL LP1													
VOLTAGE (L-N): 120				ENCLOSURE TYPE: NEMA 1									
VOLTAGE (L-L): 208				MOUNTING: SURFACE									
PHASES, WIRES: 3 ϕ 4 W				AIC RATING (A): 14000									
MINIMUM BUS CAPACITY (A): 250 A				NOTES: -----									
MAIN O.C. DEVICE (A): 250 A													
CKT NO	DESCRIPTION	TRIP AMPS	POLE	PHASE LOADS (VA)						TRIP AMPS	DESCRIPTION	CKT NO	
				A		B		C					
1	LIGHTING - SIGNAGE	20	1	1200	522					1	20	LIGHTING	2
3	LIGHTING	20	1			1212	798			1	20	LIGHTING	4
5	SPARE	20	1					0	0	1	20	SPARE	6
7	SPARE	20	1	0	720					1	20	RECEPTACLES	8
9	RECEPTACLES	20	1			180	900			1	20	RECEPTACLES	10
11	RECEPTACLES	20	1					1080	1080	1	20	RECEPTACLES	12
13	RECEPTACLES	20	1	360	180					1	20	RECEPTACLES	14
15	RECEPTACLES	20	1			360	540			1	20	RECEPTACLES	16
17	RECEPTACLES	20	1					720	720	1	20	RECEPTACLES	18
19	RECEPTACLES	20	1	720	180					1	20	RECEPTACLES	20
21	RECEPTACLES	20	1			1440	1440			1	20	RECEPTACLES	22
23	RECEPTACLES	20	1					1260	1260	1	20	RECEPTACLES	24
25	RECEPTACLES	20	1	900	540					1	20	RECEPTACLES	26
27	RECEPTACLES	20	1			540	540			1	20	RECEPTACLES	28
29	RECEPTACLES	20	1					540	540	1	20	RECEPTACLES	30
31	RECEPTACLES	20	1	540	540					1	20	RECEPTACLES	32
33	RECEPTACLES	20	1			540	500			1	20	DENTAL CHAIR-OP1	34
35	DENTAL CHAIR-OP2	20	1					500	500	1	20	DENTAL CHAIR-OP3	36
37	DENTAL CHAIR-OP4	20	1	500	500					1	20	DENTAL CHAIR-OP5	38
39	DENTAL CHAIR-OP6A	20	1			500	500			1	20	DENTAL CHAIR-OP6B	40
41	DENTAL CHAIR-OP7	20	1					500	0	1	20	SPARE	42
43	RECEPTACLES-MONITORS	20	1	900	540					1	20	RECEPTACLES-MONITORS	44
45,47	PANO	30	2			2100	2100			2	30	AIR COMPRESSOR	46,48
45,47	PANO	30	2					2100	2100	2	30	AIR COMPRESSOR	46,48
49,51	VACUUM PUMP	30	2	771	1500					1	20	MICROWAVE-1	50
49,51	VACUUM PUMP	30	2			771	1500			1	20	MICROWAVE-2	52
53	REFRIGERATOR	20	1			760	1040			1	20	WATER FOUNTAIN	54
55,57	EW-1	40	2	3000	520					1	20	CP-1	56
55,57	EW-1	40	2			3000	520			3	45	RTU-1	58,60,62
59,61,63	RTU-2	45	3					4800	4800	3	45	RTU-1	58,60,62
59,61,63	RTU-2	45	3	4800	4800					3	45	RTU-1	58,60,62
59,61,63	RTU-2	45	3			4800	180			1	20	ROOF GFCI	64
65	SPARE	20	1					0	0	1	20	SPARE	66
67	SPARE	20	1							1	20	SPARE	68
69	SPARE	20	1							1	20	SPARE	70
71	BUSSED SPACE ONLY											BUSSED SPACE ONLY	72
73	BUSSED SPACE ONLY											BUSSED SPACE ONLY	74
75	BUSSED SPACE ONLY											BUSSED SPACE ONLY	76
77	BUSSED SPACE ONLY											BUSSED SPACE ONLY	78
79	BUSSED SPACE ONLY											BUSSED SPACE ONLY	80
81	BUSSED SPACE ONLY											BUSSED SPACE ONLY	82
83	BUSSED SPACE ONLY											BUSSED SPACE ONLY	84
				CONNECTED LOAD PHASE TOTALS (VA)									
				24233		29556		24815					
				CONNECTED LOAD (KVA)		DEMAND FACTOR		DEMAND LOAD (KVA)		DEMAND LOAD		72.9 KVA	
				28.8		1.00		28.8		SPARE CAPACITY		8.2 KVA	
				Equipment 16.0		1.00		16.0		SPARE CAPACITY		22.7 AMPS	
				Lighting 2.5		1.25		3.2		PHASE BALANCE			
				Lighting - Exterior 1.2		1.25		1.5		A TO B		82%	
				Motors 0.0		1.00		0.0		B TO C		84%	
				Motors (Largest) 0.5		1.25		0.7		C TO A		98%	
				Receptacles (0 - 10 KVA) 10.0		1.00		10.0					
				Receptacles (Over 10 KVA) 13.6		0.50		6.8					
				Electric Water Heater 6.0		1.00		6.0					
				TOTAL: 78.6				72.9					
				LOAD (AMPS): 218.2				202.3					

Keyed Notes:

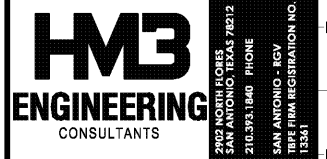
- PROVIDE LOAD "GR1408 LT ENC SM N1" ENCLOSURE WITH INTERIOR "GR1408 LT INT XNC DTC DV" ADJACENT TO NEW TENANT PANEL. COORDINATE ON/OFF TIME SCHEDULES WITH OWNER. CONTRACTOR TO SUPPLY POWER FROM A SPARE 20A/1P BREAKER.
- PROVIDE LOAD KEY DIGITAL SWITCH "KS PWM" TO SERVE AS A 2 HOUR OVERRIDE SWITCH OF ALL INTERIOR LIGHTING. COORDINATE FINAL LOCATION OF SWITCH WITH ARCHITECT/OWNER.
- ADD TERMINATOR TO FIRST AND LAST DEVICE ON BUS.
REPLACE EXISTING TENANT SERVICE DISCONNECT WITH NEW 400A, 3P, N3R, FUSED AT 250A. CONTRACTOR SHALL VERIFY EXISTING SERVICE ENTRANCE CONDITIONS.



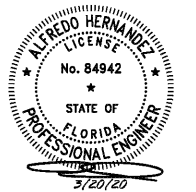
1 ELECTRICAL RISER
N.I.S.



8000 IH-10, FRONTAGE RD., STE 300
SAN ANTONIO, TX 78230
210-899-4500



DENTAL OFFICES OF
DR. FREITAS & DR. SOUZA
17901 PINES BLVD. SUITE 202, PEMBROKE PINES, FL 33029



ISSUE		
NO.	DATE	DESCRIPTION
1	03-20-2020	PERMIT DOCUMENTS

Project No. HMB PROJ #20055 Date: 03/20/20
Sheet Title: ELECTRICAL ONE LINE & SCHEDULES
Page No. E300