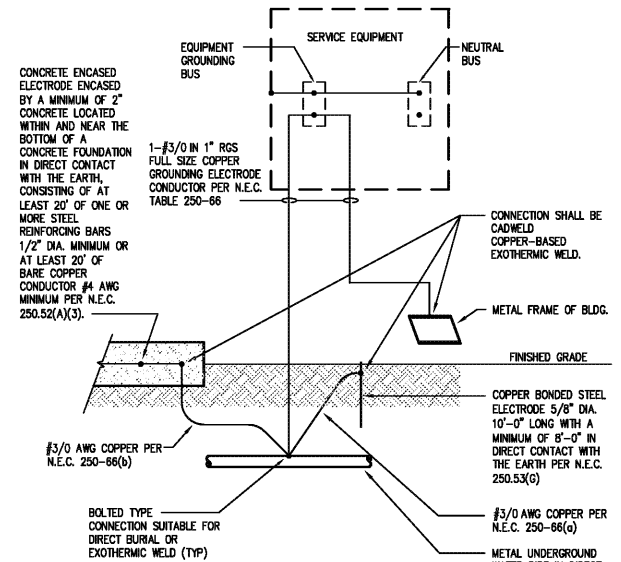


**GENERAL NOTES:**

1. ALL HARDWARE SHALL BE STAINLESS STEEL.
2. PROVIDE 1 MOUNTING POINT PER 305mm (12") OF BAR LENGTH.
3. HOLES MAY BE ADDED IF REQUIRED.

**1 GROUNDING BAR DETAIL**  
NTS SD260526-01



**CONCRETE ENCASED ELECTRODE ENCASED BY A MINIMUM OF 2" CONCRETE LOCATED WITHIN AND NEAR THE BOTTOM OF A CONCRETE FOUNDATION IN DIRECT CONTACT WITH THE EARTH, CONSISTING OF AT LEAST 20' OF ONE OR MORE STEEL REINFORCING BARS 1/2" DIA. MINIMUM OR AT LEAST 20' OF BARE COPPER CONDUCTOR #4 AWG MINIMUM PER N.E.C. 250.52(A)(3).**

**CONNECTION SHALL BE CADWELD COPPER-BASED EXOTHERMIC WELD.**

**1-#3/0 IN 1" RGS FULL SIZE COPPER GROUNDING ELECTRODE CONDUCTOR PER N.E.C. TABLE 250-66**

**COPPER BONDED STEEL ELECTRODE 5/8" DIA. 10'-0" LONG WITH A MINIMUM OF 8'-0" IN DIRECT CONTACT WITH THE EARTH PER N.E.C. 250.53(G)**

**#3/0 AWG COPPER PER N.E.C. 250-66(b)**

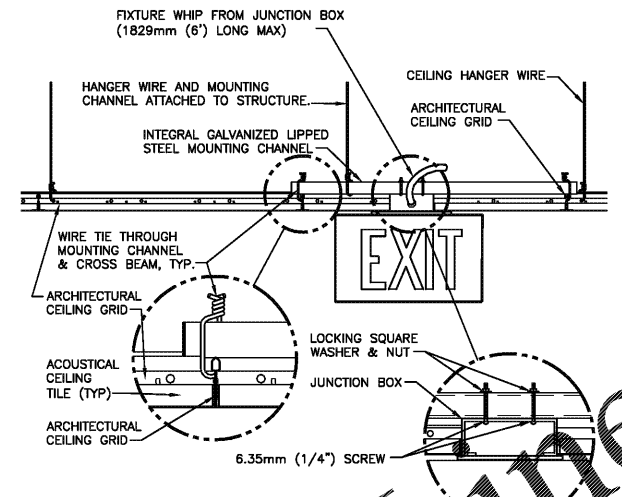
**#3/0 AWG COPPER PER N.E.C. 250-66(g)**

**METAL UNDERGROUND WATER PIPE IN DIRECT CONTACT WITH THE EARTH FOR 10'-0" MINIMUM.**

**BOLTED TYPE CONNECTION SUITABLE FOR DIRECT BURIAL OR EXOTHERMIC WELD (TYP)**

**NOTE: PROVIDE GROUNDING BUSHING ON CONDUIT ENDS. CONNECT BUSHING TO GROUNDING CONDUCTOR.**

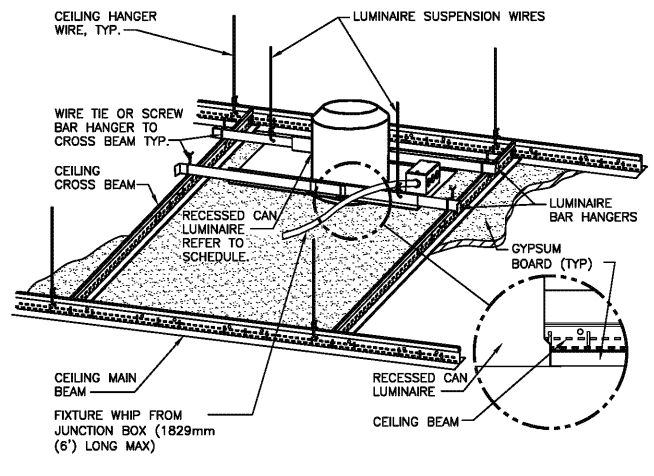
**2 GROUNDING ELECTRODE SYSTEM**  
NTS



**GENERAL NOTE:**

1. INSTALL IN ACCORDANCE WITH MANUFACTURER'S MOUNTING INSTRUCTIONS AND USING THE RECOMMENDED MOUNTING HARDWARE.

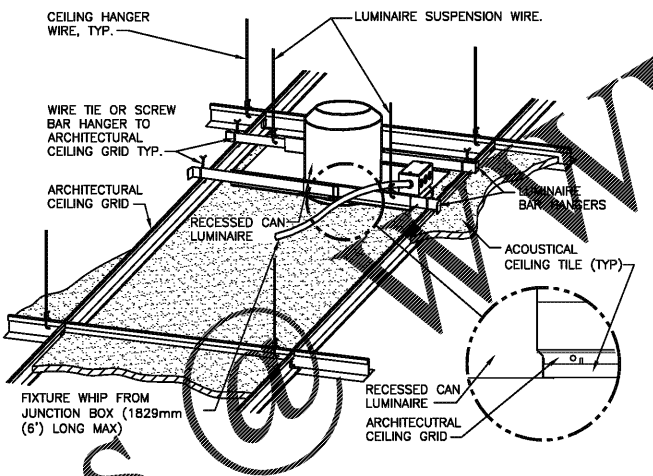
**3 EXIT SIGN MOUNTING - LAY-IN CEILING**  
NTS SD265100-06



**GENERAL NOTE:**

1. INSTALL IN ACCORDANCE WITH MANUFACTURER'S MOUNTING INSTRUCTIONS AND USING THE RECOMMENDED MOUNTING HARDWARE.

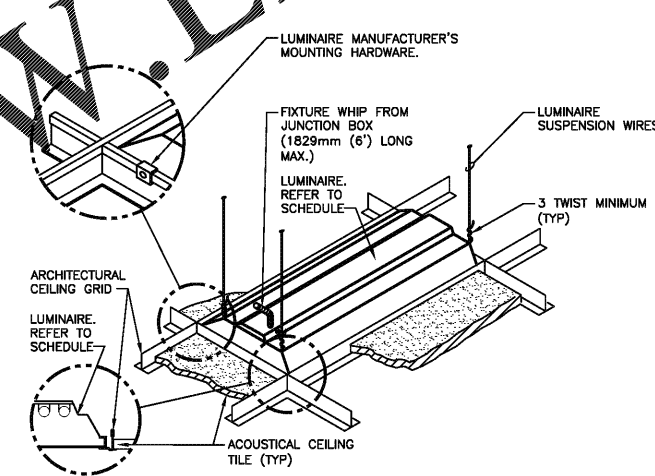
**4 DOWNLIGHT MOUNTING - GYPBOARD CEILING**  
NTS SD265100-03



**GENERAL NOTE:**

1. INSTALL IN ACCORDANCE WITH MANUFACTURER'S MOUNTING INSTRUCTIONS AND USING RECOMMENDED MOUNTING HARDWARE.

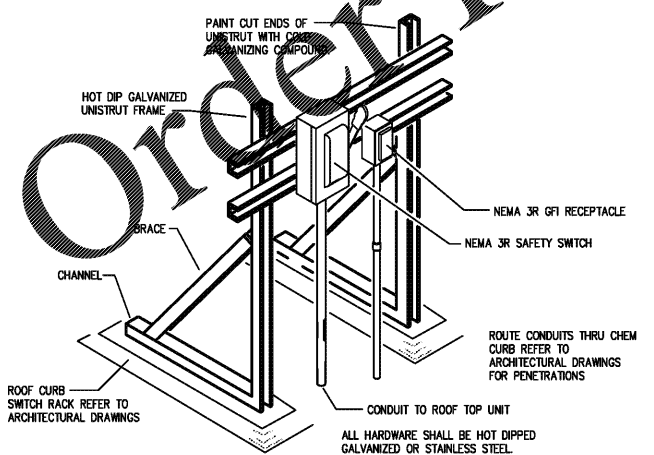
**5 DOWNLIGHT MOUNTING - LAY-IN CEILING**  
NTS SD265100-04



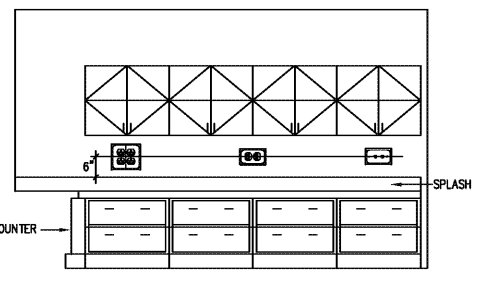
**GENERAL NOTE:**

1. INSTALL IN ACCORDANCE WITH MANUFACTURER'S MOUNTING INSTRUCTIONS AND USING THE RECOMMENDED MOUNTING HARDWARE.

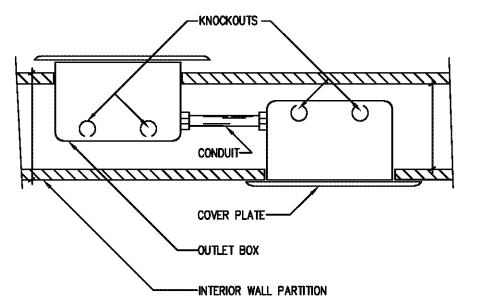
**6 LUMINAIRE MOUNTING - LAY-IN CEILING**  
NTS SD265100-02



**7 ROOF DISCONNECT RACK DETAIL**  
NTS



**8 TYPICAL COUNTERTOP DEVICE ELEVATION**  
NTS



**9 BACK TO BACK OUTLETS DETAIL**  
NTS

LEAN  
dental design

8000 IH-10, FRONTAGE RD., STE 300  
SAN ANTONIO, TX 78230  
210-899-4500

**HMB**  
ENGINEERING  
CONSULTANTS

2002 NORTH FLORES  
SAN ANTONIO, TEXAS 78212  
210-393-1840 PHONE  
SAN ANTONIO - 10V  
TX REGISTRATION NO.  
15341

DENTAL OFFICES OF  
**DR. FREITAS & DR. SOUZA**  
17901 PINES BLVD. SUITE 202, PEMBROKE PINES, FL 33029



**ISSUE**

NO.	DATE	DESCRIPTION
1	03-20-2020	PERMIT DOCUMENTS

Project No. HMB PROJ #20055 Date: 03/20/20  
Sheet Title: **ELECTRICAL DETAILS**  
Page No. **E002**