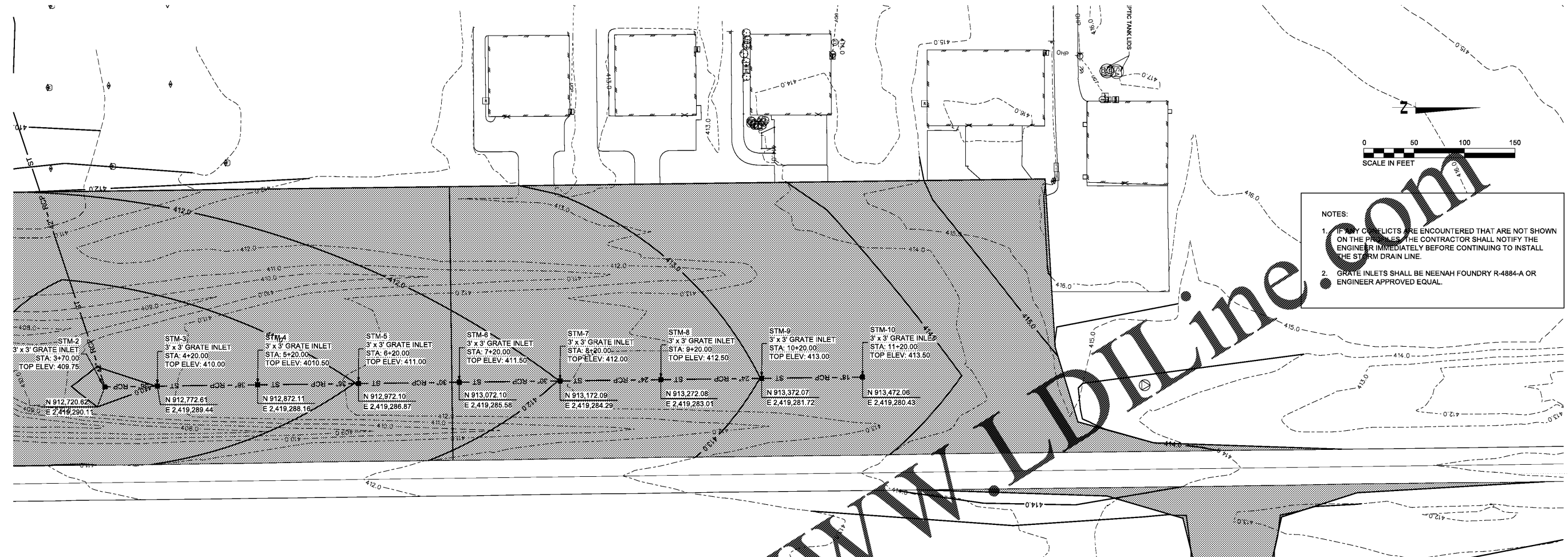
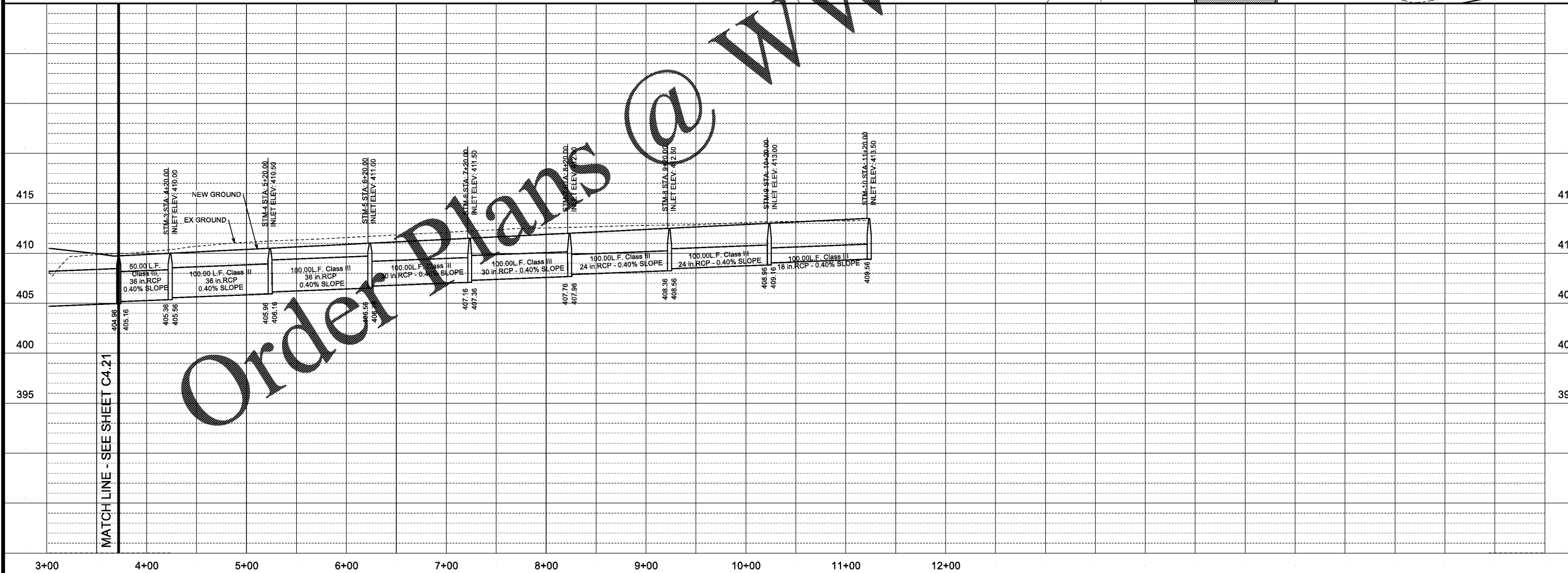


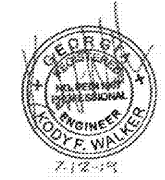
9/9/2019
1:10:52 PM
\$INSR\$
\$USER\$
\$TBL\$



NOTES:
 1. IF ANY CONFLICTS ARE ENCOUNTERED THAT ARE NOT SHOWN ON THE PLANS, THE CONTRACTOR SHALL NOTIFY THE ENGINEER IMMEDIATELY BEFORE CONTINUING TO INSTALL THE STORM DRAIN LINE.
 2. GRATE INLETS SHALL BE NEENAH FOUNDRY R-4884-A OR ENGINEER APPROVED EQUAL.



Order Plans @ www.LDilLine.com



STORM SEWER PLAN AND PROFILE
 GDOT PROJ. NO. XXX-XXXX-XXX(HOUSTON)
 PERRY-HOUSTON COUNTY AIRPORT
 PERRY, GEORGIA

REV.	DR.	CHK.	ISSUED FOR 100% REVIEW
JEC	KRW	2-15-2019	ISSUED FOR 50% REVIEW
JEC	KRW	5-23-2019	ISSUED FOR 50% REVIEW
JEC	KRW	7-12-2019	ISSUED FOR 100% REVIEW