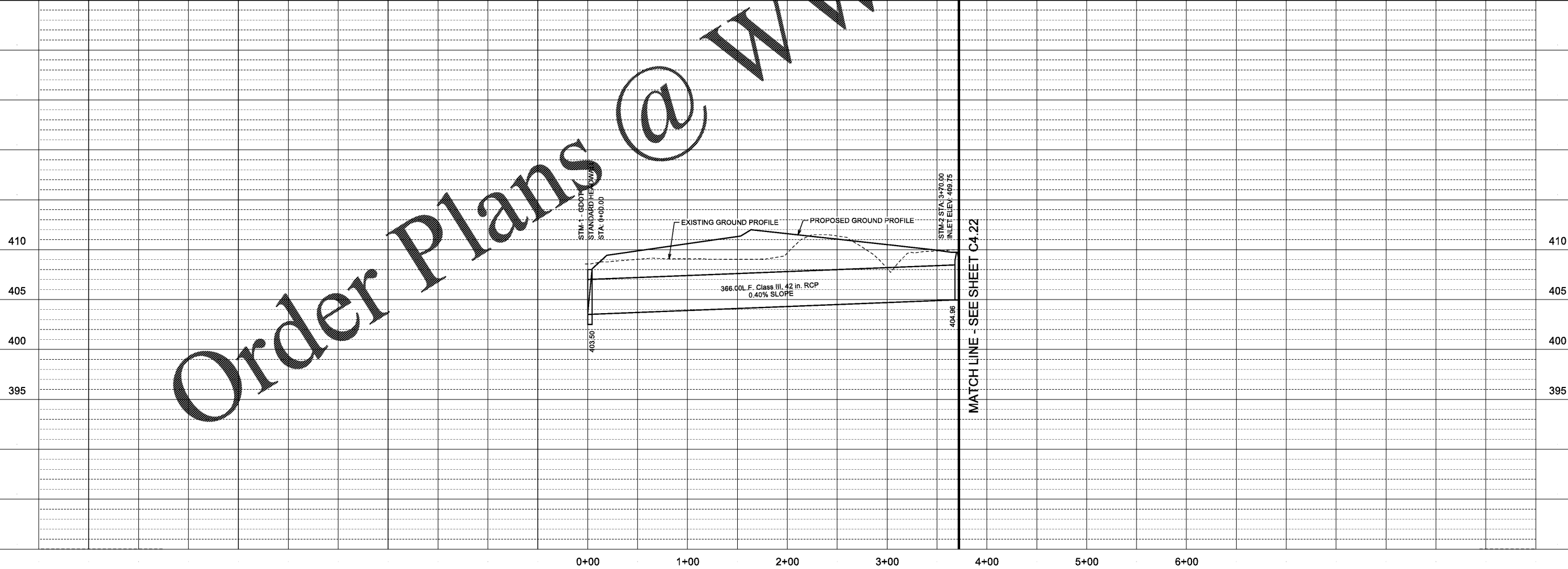
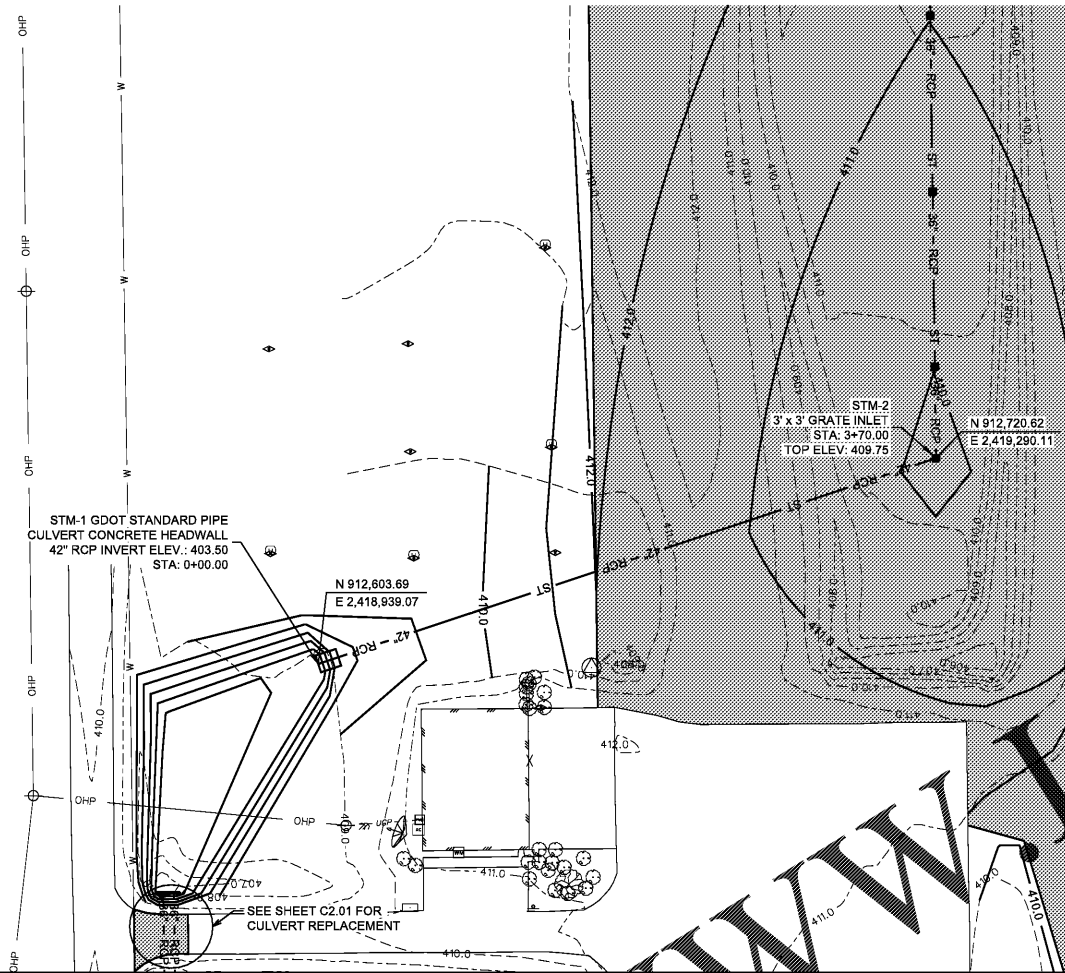
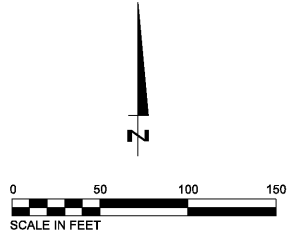


9/9/2019
1:09:50 PM
\$TNS1R\$
\$USER\$
\$TBL\$

- NOTES:
- IF ANY CONFLICTS ARE ENCOUNTERED THAT ARE NOT SHOWN ON THE PROFILES, THE CONTRACTOR SHALL NOTIFY THE ENGINEER IMMEDIATELY BEFORE CONTINUING TO INSTALL THE STORM DRAIN LINE.
 - GRATE INLETS SHALL BE NEENAH FOUNDRY R-4884-A OR ENGINEER APPROVED EQUAL.



Order Plans @ www.LDILine.com

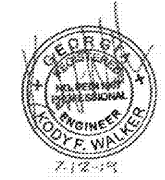
www.LDILine.com

REV.	DR.	CHK.	REVISION INFORMATION
	JEC	KFW	ISSUED FOR 50% REVIEW
	JEC	KFW	ISSUED FOR 90% REVIEW
	JEC	KFW	ISSUED FOR 100% REVIEW

C4.21
FILE NO. 36206-05

STORM SEWER PLAN AND PROFILE

GDOT PROJ. NO. XXX-XXXX-XX(XXX) HOUSTON
PERRY-HOUSTON COUNTY AIRPORT
PERRY, GEORGIA



BARGE
DESIGN SOLUTIONS
2047 West Main Street / Suite 17 / Dothan, Alabama 36021
PHONE (256) 793-6266 / FAX (256) 793-4659