

### REFRIGERANT LEAK DETECTION SYMBOL LEGEND

	REFRIGERANT LEAK DETECTION HORN AND STROBE. PROVIDE AND INSTALL ALL CONDUIT, WIRING, ETC. AS REQUIRED FOR A COMPLETE INSTALLATION. SEE SPECIFICATION SECTION 11 41 48 AND SHEET EM 3 FOR MORE INFORMATION.
	REFRIGERANT LEAK DETECTION STROBE ONLY. PROVIDE AND INSTALL ALL CONDUIT, WIRING, ETC. AS REQUIRED FOR A COMPLETE INSTALLATION. SEE SPECIFICATION SECTION 11 41 48 AND SHEET EM 3 FOR MORE INFORMATION.
	LEAK DETECTION SENSOR. PROVIDE AND INSTALL SENSOR, CONDUIT, WIRING, TUBING, ETC. AS REQUIRED FOR A COMPLETE INSTALLATION. SEE SPECIFICATION SECTION 11 41 48 AND MECHANICAL PLANS FOR MORE INFORMATION.

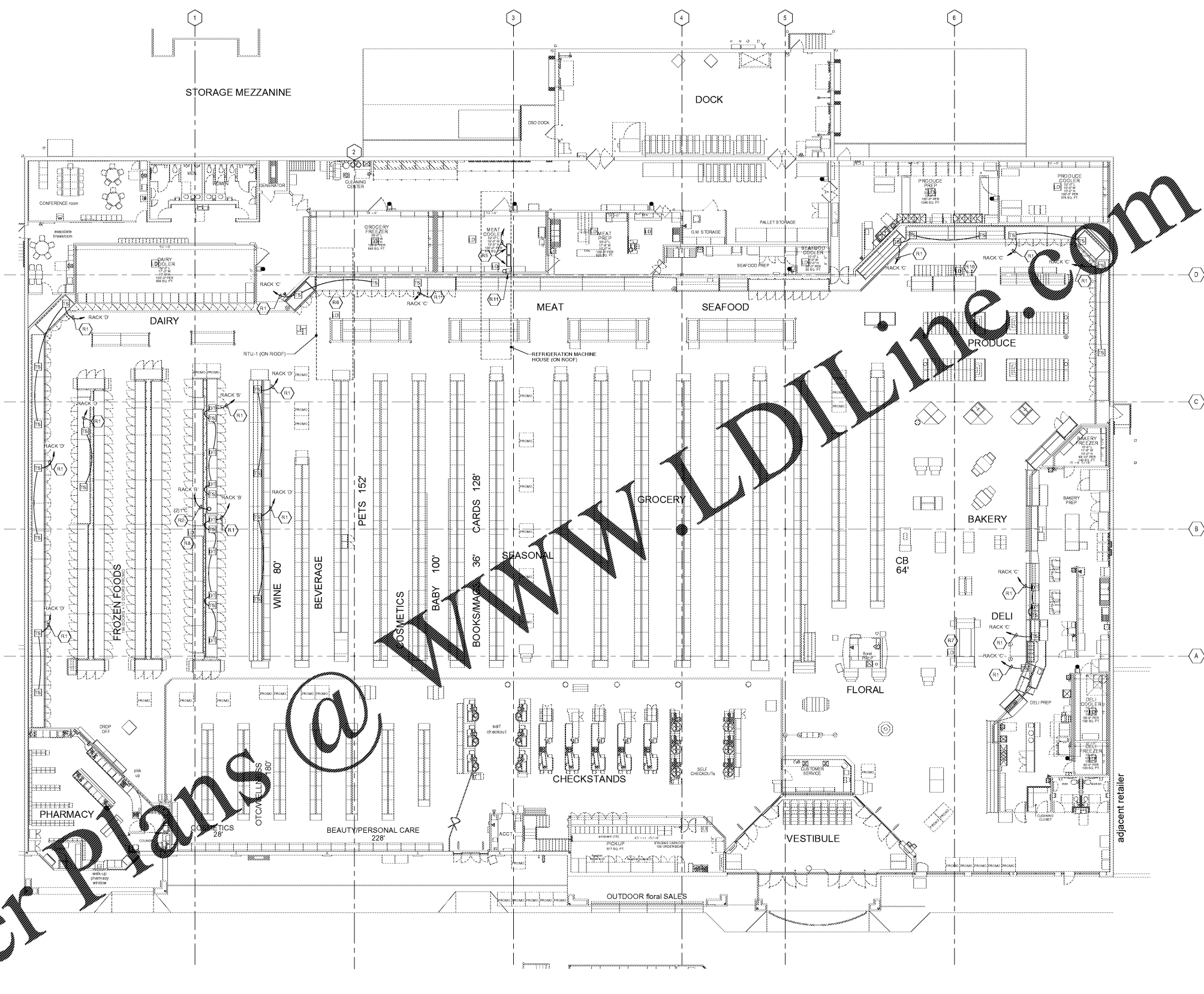
NOTE 1: PROVIDE 120V CIRCUIT FROM NEAREST 120V PANEL WITH CAPACITY FOR LEAK DETECTION SYSTEM POWER RELAYS AS REQUIRED. SEE SPECIFICATION SECTION 11 41 48 FOR MORE INFORMATION. COORDINATE LOCATION OF RELAYS WITH KROGER PROJECT MANAGER.

NOTE 2: INSTALL LEAK DETECTION SENSOR IN MECHANICAL HOUSE ON ROOF. INSTALL (1) HORN-STROBE INSIDE AND (1) HORN-STROBE OUTSIDE MECHANICAL HOUSE. COORDINATE LOCATIONS WITH KROGER PROJECT MANAGER.

NOTE 3: ADDITIONAL LEAK DETECTION SENSORS REQUIRED IN RTU RETURN DUCTS. SEE HVAC PLANS AND SPECIFICATION SECTION 11 41 48 FOR MORE INFORMATION.

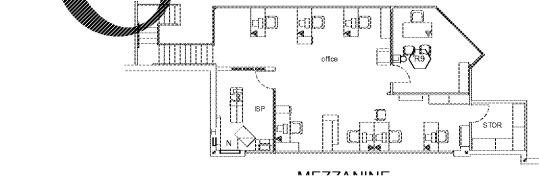
### REFRIGERANT LEAK DETECTION ZONE SCHEDULE

ZONE 1: DAIRY COOLER
ZONE 2: GROCERY FREEZER
ZONE 3: MEAT COOLER
ZONE 4: MEAT PREP
ZONE 5: SEAF-OD COOLER
ZONE 6: PRODUCE PREP
ZONE 7: PRODUCE COOLER
ZONE 8: BAKERY FREEZER
ZONE 9: DELI COOLER
ZONE 10: DELI FREEZER
ZONE 11: REFRIGERATION MACHINE HOUSE (ON ROOF)
ZONE 12: RETURN AIR DUCT (RTU-1)
ZONE 13: SALES FLOOR (DELI CASES)
ZONE 14: SALES FLOOR (FROZEN FOOD CASES)
ZONE 15: SALES FLOOR (PRODUCE CASES)



Order Plans @ [www.LDOnline.com](http://www.LDOnline.com)

**1** REFRIGERATION ELECTRICAL POWER PLAN  
3/32" = 1'-0"



**2** REFRIGERATION ELECTRICAL POWER PLAN - FRONT MEZZANINE  
3/32" = 1'-0"

### REFRIGERATION KEYNOTE LEGEND

Key Value	Keynote Text
R1	PROVIDE (1) SET OF BELDEN 4800R1 #22 2 SHIELDED CABLE FOR EACH TEMPERATURE SENSOR AND (1) FIBER TERMINATION SENSOR SHOWN. PROVIDE 3/4" CONDUIT UNLESS NOTED OTHERWISE TO REFRIGERATION UNIT NOTED ON DRAWING. PROVIDE LENGTH OF CABLE AS REQUIRED. SEE REFRIGERATION PLANS FOR MORE INFORMATION.
R2	PROVIDE A #12 CONDUIT (QUANTITY SPECIFIED) FROM CASES TO REFRIGERATION UNIT FOR DEFROST WIRING. PROVIDE LENGTH OF CABLE AS REQUIRED. SEE REFRIGERATION PLANS FOR MORE INFORMATION. PROVIDE NEW BREAKERS AND WIRING AS REQUIRED FOR ALL REFRIGERATION CASES WITH DEFROST CIRCUITS. COORDINATE DASH REQUIREMENTS WITH REFRIGERATION INSTALLER PRIOR TO ROUGH-IN.
R3	LEAK DETECTION UNIT (LEU) AND CONTROL PANEL TO BE MOUNTED INSIDE REFRIGERATION MACHINE HOUSE. COORDINATE EXACT LOCATION WITH KROGER PROJECT MANAGER. CONTRACTOR TO PROVIDE 120V CIRCUIT FROM NEARBY ELECTRICAL PANEL WITH AVAILABLE CAPACITY. PROVIDE ALL ELECTRICAL DEVICES AS REQUIRED. SEE SHEET EM 3 AND SPECIFICATION SECTION 11 41 48 FOR MORE INFORMATION. MAKE ALL FINAL CONNECTIONS.
R4	FIELD LOCATED LEAK DETECTION SENSOR INSIDE RETURN DUCT PER SPECIFICATION SECTION 11 41 48. COORDINATE WITH MECHANICAL CONTRACTOR AS REQUIRED.
R5	LEAK DETECTION SENSOR TO BE MOUNTED ON COLUMN NEAR DELI AREA REFRIGERATED CASES PER SPECIFICATION SECTION 11 41 48. COORDINATE EXACT LOCATION WITH KROGER PROJECT MANAGER. MAKE ALL FINAL CONNECTIONS.
R6	LEAK DETECTION SENSOR TO BE MOUNTED ON COLUMN NEAR FROZEN GLASS DOOR CASES PER SPECIFICATION SECTION 11 41 48. COORDINATE EXACT LOCATION WITH KROGER PROJECT MANAGER. MAKE ALL FINAL CONNECTIONS.
R7	LEAK DETECTION SENSOR TO BE MOUNTED ON COLUMN NEAR PRODUCE AREA REFRIGERATED CASES PER SPECIFICATION SECTION 11 41 48. COORDINATE EXACT LOCATION WITH KROGER PROJECT MANAGER. MAKE ALL FINAL CONNECTIONS.
R8	LEAK DETECTION SENSOR TO BE MOUNTED INSIDE REFRIGERATION MACHINE HOUSE PER SPECIFICATION SECTION 11 41 48. COORDINATE EXACT LOCATION WITH KROGER PROJECT MANAGER. MAKE ALL FINAL CONNECTIONS.

**ROBERTSON LOJA ROOF ARCHITECTS & ENGINEERS**  
3460 Princeton Ridge Road - Suite 275 - Alpharetta, GA 30005  
770.974.2807 - www.rljr.com



Kroger GA-464  
2175 Park Lake Drive, Atlanta, GA  
The Kroger Company

NO.	REVISIONS

REFRIGERATION ELECTRICAL POWER PLAN

02-12-20

20-107

E1.3.1