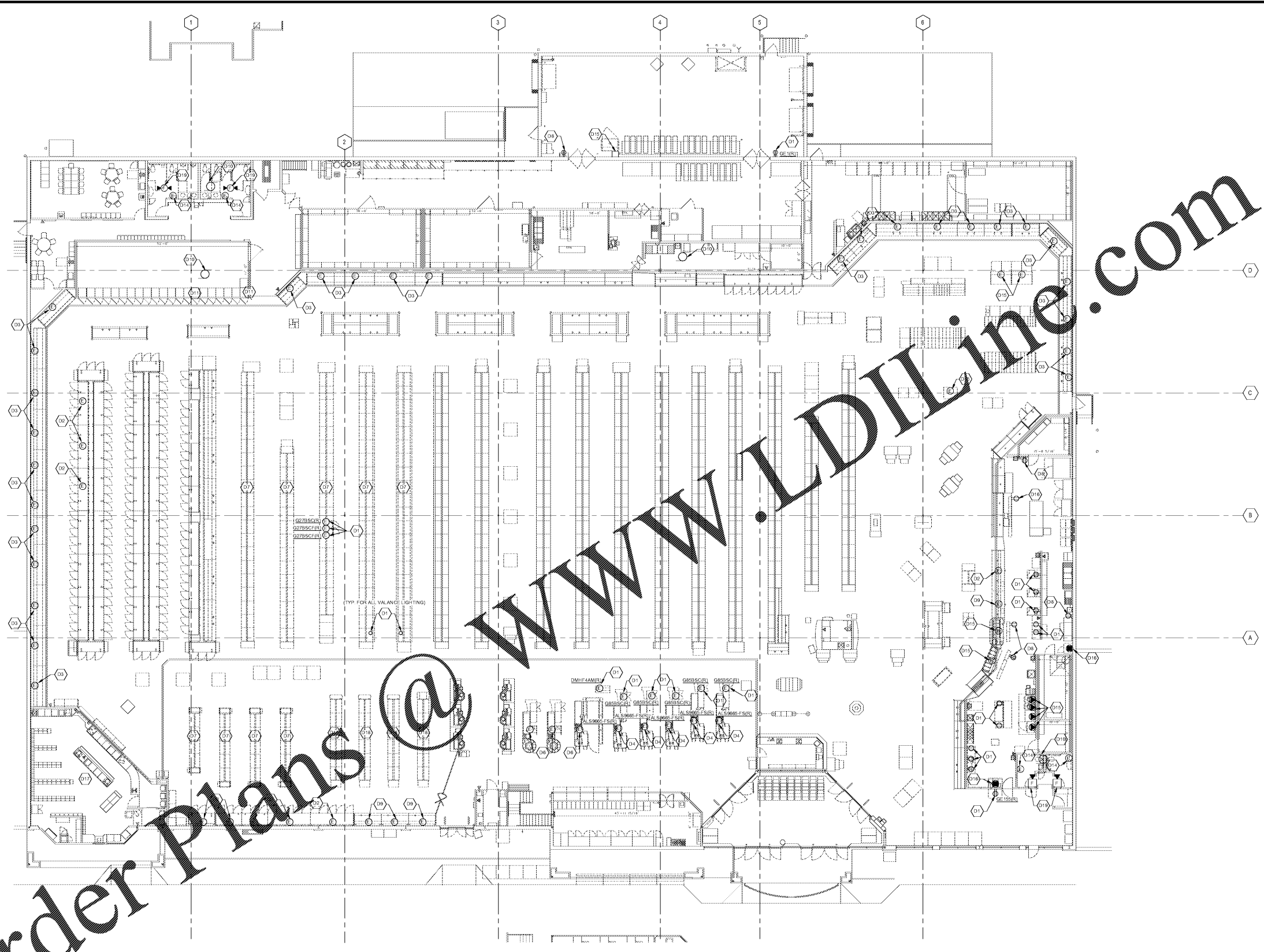


Order Plans @

WWW.LDILINE.COM



POWER DEMOLITION PLAN
3/32" = 1'-0"

POWER DEMOLITION KEYNOTE LEGEND	
Key Value	Keynote Text
D10	EXISTING EQUIPMENT TO BE RELOCATED. FIELD VERIFY EXACT LOCATION. REROUTE ALL ELECTRICAL CIRCUITS (POWER AND LOW VOLTAGE) TO NEW LOCATION AS REQUIRED. REUSE EXISTING CONDUIT, JUNCTION BOXES, COORD DROPS, ETC. WHERE POSSIBLE. WHERE CONDUIT IS STUBBED UP IN SALES FLOOR, CUT CONDUIT FLUSH WITH FLOOR AND CAP. SEE POWER PLAN FOR MORE INFORMATION.
D12	EXISTING REFRIGERATED CASES TO BE RELOCATED. REROUTE ALL EXISTING POWER CIRCUITS (FANS, LIGHTS, ANTISWEATS) AND REFRIGERATION CIRCUITS (DEFROST, CONTROL, ETC.) TO NEW LOCATION FOR CONNECTION TO NEW CASES. REUSE EXISTING CONDUIT, JUNCTION BOXES, ETC. WHERE POSSIBLE. WHERE APPLICABLE, EXISTING LIGHT FIXTURES MOUNTED ON TOP OF CASE ARE TO BE REUSED. WHERE EXHAUST FANS ARE INSTALLED ONEHIND GLASS DOOR CASES THEY ARE TO BE REUSED. PERFORM ALL ELECTRICAL WORK AS REQUIRED FOR REUSE OF LIGHT FIXTURES AND EXHAUST FANS. SEE POWER PLAN FOR MORE INFORMATION.
D13	EXISTING REFRIGERATED CASES TO BE REPLACED. MAINTAIN ALL EXISTING POWER CIRCUITS (FANS, LIGHTS, ANTISWEATS) AND REFRIGERATION CIRCUITS (DEFROST, CONTROL, ETC.) AS REQUIRED FOR CONNECTION TO NEW CASES. REUSE EXISTING CONDUIT, JUNCTION BOXES, ETC. WHERE POSSIBLE. SEE POWER PLAN FOR MORE INFORMATION.
D14	EXISTING REGISTERS TO BE RELOCATED. REROUTE ALL ELECTRICAL CIRCUITS TO NEW LOCATION AS REQUIRED. REUSE EXISTING CONDUIT, JUNCTION BOXES, COORD DROPS, ETC. WHERE POSSIBLE. WHERE CONDUIT IS STUBBED UP IN SALES FLOOR, CUT CONDUIT FLUSH WITH FLOOR AND CAP. SEE POWER PLAN FOR MORE INFORMATION.
D16	EXISTING REGISTERS TO BE DEMOLISHED. REMOVE ALL ASSOCIATED ELECTRICAL DEVICES (CONDUIT, WIRING, ETC.) BACK TO PANEL AND LABEL BREAKER AS SPARE. MAINTAIN OPERATION OF ALL EXISTING ELECTRICAL SYSTEMS AND SUBSYSTEMS TO REMAIN. WHERE CONDUIT IS STUBBED UP IN SALES FLOOR, CUT CONDUIT FLUSH WITH FLOOR AND CAP.
D17	EXISTING SHELVING TO BE RELOCATED. REROUTE ALL ELECTRICAL CIRCUITS TO NEW LOCATION AS REQUIRED. REUSE EXISTING CONDUIT, JUNCTION BOXES, COORD DROPS, ETC. WHERE POSSIBLE. WHERE CONDUIT IS STUBBED UP IN SALES FLOOR, CUT CONDUIT FLUSH WITH FLOOR AND CAP. SEE POWER PLAN FOR MORE INFORMATION.
D18	EXISTING EQUIPMENT TO BE RELOCATED. MAINTAIN ALL EXISTING POWER CIRCUITS AS REQUIRED FOR CONNECTION TO NEW EQUIPMENT. REUSE EXISTING CONDUIT, JUNCTION BOXES, ETC. WHERE POSSIBLE. SEE POWER PLAN FOR MORE INFORMATION.
D19	EXISTING REFRIGERATED CASES TO BE DEMOLISHED. REMOVE ALL ASSOCIATED ELECTRICAL DEVICES (CONDUIT, WIRING, ETC.) BACK TO PANEL AND LABEL BREAKER AS SPARE. REMOVE ALL REFRIGERATION CIRCUITS (DEFROST, CONTROL, ETC.) BACK TO REFRIGERATION SOURCE. MAINTAIN OPERATION OF ALL EXISTING ELECTRICAL SYSTEMS AND SUBSYSTEMS TO REMAIN. REUSE EXISTING CONDUIT WHERE POSSIBLE. SEE POWER PLAN FOR NEW REQUIREMENTS AT THIS LOCATION. WHERE CONDUIT IS STUBBED UP IN SALES FLOOR AND CANNOT BE REUSED, CUT CONDUIT FLUSH WITH FLOOR AND CAP.

POWER DEMOLITION KEYNOTE LEGEND	
Key Value	Keynote Text
D10	EXISTING EXHAUST FAN TO BE REPLACED. DISCONNECT AND MAINTAIN ALL ELECTRICAL CIRCUITRY FOR CONNECTION TO NEW EXHAUST FAN. SEE POWER PLAN FOR MORE INFORMATION.
D11	ALL ELECTRICAL DEVICES IN THIS SPACE TO BE REMOVED. REMOVE ALL CONDUIT, WIRING, ETC. BACK TO PANEL AND LABEL BREAKER AS SPARE. MAINTAIN OPERATION OF ALL EXISTING ELECTRICAL SYSTEMS AND SUBSYSTEMS TO REMAIN. WHERE CONDUIT IS STUBBED UP IN SALES FLOOR, CUT CONDUIT FLUSH WITH FLOOR AND CAP.
D14	EXISTING HAND DRYER TO BE DEMOLISHED. REMOVE ALL ASSOCIATED ELECTRICAL DEVICES (CONDUIT, WIRING, ETC.) BACK TO PANEL AND LABEL BREAKER AS SPARE. MAINTAIN OPERATION OF ALL EXISTING ELECTRICAL SYSTEMS AND SUBSYSTEMS TO REMAIN. WHERE CONDUIT IS STUBBED UP IN SALES FLOOR, CUT CONDUIT FLUSH WITH FLOOR AND CAP.
D15	EXISTING EQUIPMENT TO BE DEMOLISHED. REMOVE ALL ASSOCIATED ELECTRICAL DEVICES (CONDUIT, WIRING, ETC.) BACK TO PANEL AND LABEL BREAKER AS SPARE. MAINTAIN OPERATION OF ALL EXISTING ELECTRICAL SYSTEMS AND SUBSYSTEMS TO REMAIN. WHERE CONDUIT IS STUBBED UP IN SALES FLOOR AND CANNOT BE REUSED, CUT CONDUIT FLUSH WITH FLOOR AND CAP.
D16	EXISTING EQUIPMENT TO BE DEMOLISHED. REMOVE ALL ASSOCIATED ELECTRICAL DEVICES (CONDUIT, WIRING, ETC.) BACK TO PANEL AND LABEL BREAKER AS SPARE. MAINTAIN OPERATION OF ALL EXISTING ELECTRICAL SYSTEMS AND SUBSYSTEMS TO REMAIN. WHERE CONDUIT IS STUBBED UP IN SALES FLOOR, CUT CONDUIT FLUSH WITH FLOOR AND CAP.
D17	PHARMACY COMPUTERS TO BE POLY-MOUNTED. DISCONNECT / RECONNECT ALL ELECTRICAL CIRCUITRY (POWER AND LOW VOLTAGE) AS REQUIRED. SEE POWER PLAN FOR MORE INFORMATION.
D18	EXISTING SHELVING TO BE DEMOLISHED. REMOVE ALL ASSOCIATED ELECTRICAL DEVICES (CONDUIT, WIRING, ETC.) BACK TO PANEL AND LABEL BREAKER AS SPARE. MAINTAIN OPERATION OF ALL EXISTING ELECTRICAL SYSTEMS AND SUBSYSTEMS TO REMAIN. WHERE CONDUIT IS STUBBED UP IN SALES FLOOR, CUT CONDUIT FLUSH WITH FLOOR AND CAP.
D19	EXISTING FIRE ALARM NOTIFICATION DEVICE TO REMAIN. DISCONNECT / RECONNECT AS REQUIRED FOR REMODELING. COORDINATE WITH ALL OTHER TRADES.

REFER TO SHEET E01 FOR LEGENDS, NOTES, AND SCHEDULES

ROBERTSON LOJA ROOF ARCHITECTS & ENGINEERS
3400 Preston Ridge Road - Suite 275 Alpharetta, GA 30005
770.674.2007 www.rlrpa.com



Kroger GA-464
2175 Park Lake Drive, Atlanta, GA 30326
The Kroger Company

REVISIONS	

POWER DEMOLITION PLAN

02-12-20

20-107

ED1.2