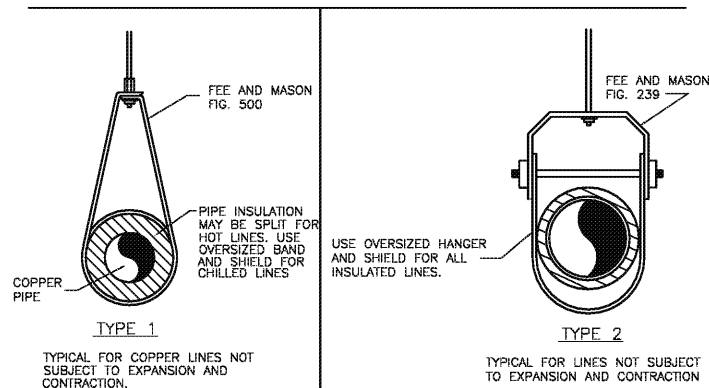
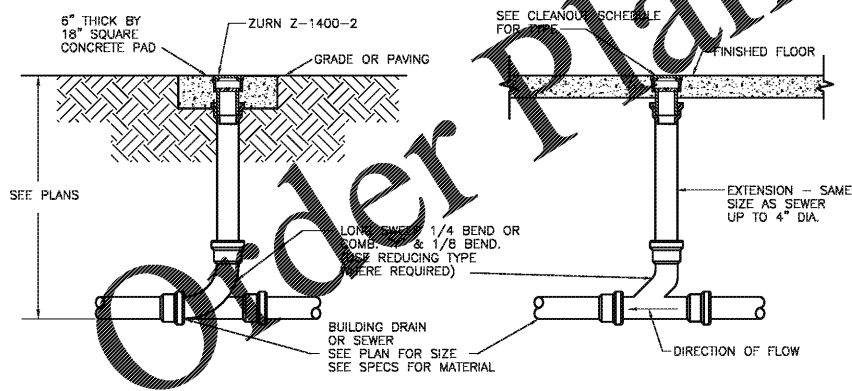


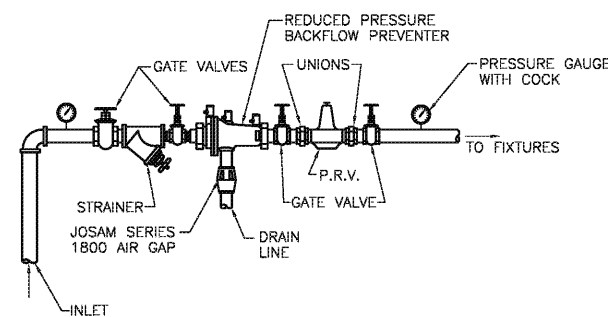
**PIPE TRENCH-TYPICAL  
15050-B**  
NO SCALE



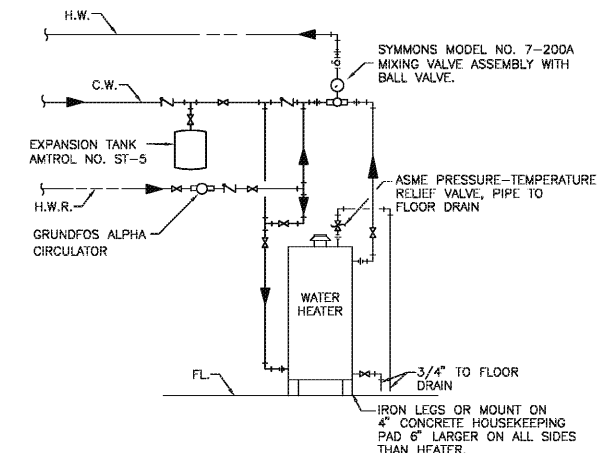
**PIPE SUPPORT DETAILS  
15140-AA**  
NO SCALE



**CLEANOUT DETAILS  
15420-B**  
NO SCALE



**P.R.V AND REDUCED PRESSURE  
BACKFLOW PREVENTER  
15430-GG**  
NO SCALE



**WATER HEATER HOOK-UP  
15450-M**  
NO SCALE

SYM.	MANUFACTURE	FIXTURE NO.	SIZE	TRIM	SUPPLIES	WASTE	TRAP	ROUGHING IN CONNECTION				REMARKS
								C.W.	H.W.	WASTE	VENT	
WCH	ZURN	Z5555-K	16 3/4" H	WCH	McGUIRE H2166	----	----	1/2"	----	4"	2"	SEE NOTE 1
L1	ZURN	Z5344-PED	20" x 18"	L1	McGUIRE H2165	L1	McGUIRE 8912	1/2"	1/2"	1 1/2"	2"	SEE NOTES 2 & 3
L2	ZURN	Z5114	20" x 17"	L2	McGUIRE H2165	L2	McGUIRE 8912	1/2"	1/2"	1 1/2"	2"	SEE NOTE 3
S1	ELKAY	DLR-1919	19" x 19" x 10"	Z-831B4-XL	McGUIRE H2165	S1	McGUIRE 8912	1/2"	1/2"	1 1/2"	2"	SEE NOTE 3
S2	ELKAY	LR-3322	33" x 22"	Z-871C4XL	McGUIRE H2165	S2	McGUIRE 8912	1/2"	1/2"	1 1/2"	2"	
SS	STERN WILLIAMS	SB-901	24" x 24"	T-15-VB	----	SS	"P"	1/2"	1/2"	3"	2"	
EWC	ELKAY	EZSTLBWSLK	----	----	McGUIRE H2165	W/FIXTURE	McGUIRE 8912	1/2"	----	1 1/2"	2"	

- NOTES:  
 1. INCLUDE ZURN Z-5956SS-EL-ST5 WHITE, HEAVY DUTY ELONGATED TOILET SEAT, LESS COVER.  
 2. PROVIDE ZURN Z-1231 CONCEALED ARM CARRIER SYSTEM.  
 3. INCLUDE ASSE 1070 COMPLIANT SYMMONS 7-210-CK THERMOSTATIC MIXING VALVE AT EACH LAVATORY AND EXAM SINK.

**PLUMBING SPECIFICATION NOTES:**

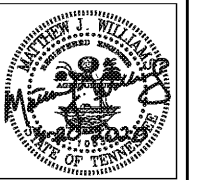
- ALL WORK TO BE DONE IN ACCORDANCE WITH CURRENT ACCEPTED INTERNATIONAL MECHANICAL CODE, INTERNATIONAL PLUMBING CODE, CHATTANOOGA CITY ORDINANCE, NATIONAL FIRE PROTECTION ASSOCIATION. SEISMIC RESTRAINTS TO BE INSTALLED ON ALL COMPONENTS PER INTERNATIONAL BUILDING CODE.
- CONTRACTOR SHALL FURNISH TWO (2) COMPLETE CLEAN SETS OF MARKED REPRODUCIBLE DRAWINGS AND SPECIFICATIONS SHOWING CHANGES FROM CONTRACT DRAWINGS INCLUDE ADDENDUM AND CHANGE ORDER REVISIONS.
- CUT AND PATCH ALL ITEMS INCIDENT TO THIS DIVISION.
- SEE PLUMBING FIXTURE CONNECTION SCHEDULE FOR PLUMBING FIXTURE AND TRIM SPECIFICATIONS AND NOTES.
- PIPING:  
 A. WASTE AND VENTS: ABOVE & BELOW GRADE PIPING SHALL BE SCHEDULE 40 B.P.C., EXCEPT IN RETURN AIR PLENUMS USE SERVICE WEIGHT CAST IRON. "CELLULAR CORE" PIPING IS ACCEPTABLE.  
 B. DOMESTIC WATER : HARD DRAWN COPPER TYPE "L" PERM-85
- VALVES:  
 A. BALL VALVE-- BALL VALVES SHALL BE "FULL-PORT" TYPE.
- PIPING SPECIALTIES  
 A. FLOOR DRAIN: ZURN Z-4150-Y 3" SIZE, INCLUDE DEEP SEAL TRAP AND TRAP GUARD AT ALL FLOOR DRAINS.
- PIPE INSULATION:  
 A. GLASS FIBER:  
 1). Domestic cold water -- 1/2" thick; domestic hot water -- 1-1/2" thick; hot water recirculating lines -- 1-1/2" thick.

**WATER HEATER : WH1**

MFR. A.O. SMITH MODEL NO. DRE-52-9  
 STORAGE: 50 GAL. WORKING PRESS.: 150 PSI  
 RECOVERY 37 GPH AT 100°F RISE.  
 INPUT: 9 KW -- COORDINATE W/ELECTRICAL  
 NOTES: PROVIDE FACTORY SUPPLIED T&P RELIEF VALVE AND PIPE DRAIN, FULL SIZE, TO DRAIN. DRAIN LINE SHALL BE HARD DRAWN COPPER.  
 COORDINATE ELECTRICAL REQUIREMENTS WITH EC PRIOR TO ORDERING HEATER AND/OR PUMP.

**WATER HEATER : WH-2**

MFR. A.O. SMITH MODEL NO. DEL-30  
 STORAGE: 30 GAL. WORKING PRESS.: 150 PSI  
 RECOVERY 18 GPH AT 100°F RISE.  
 INPUT: 4.5 KW -- COORDINATE W/ELECTRICAL  
 NOTES: PROVIDE FACTORY SUPPLIED T&P RELIEF VALVE AND PIPE DRAIN, FULL SIZE, TO DRAIN. DRAIN LINE SHALL BE HARD DRAWN COPPER.  
 COORDINATE ELECTRICAL REQUIREMENTS WITH EC PRIOR TO ORDERING HEATER AND/OR PUMP.



**bloom architecture**  
 400 E. Main Street, #215 | Chattanooga, TN 37408  
 design@bloom.com | 423-403-1951

**5700 BUILDING: INTERIOR  
RENOVATION**  
 951 EASTGATE LOOP CHATTANOOGA, TN 37411

No.	Description	Date

Project #: 19161  
 20 MAR 2020  
 PLUMBING  
 DETAILS &  
 SCHEDULES

P201

PERMIT DOCUMENTS