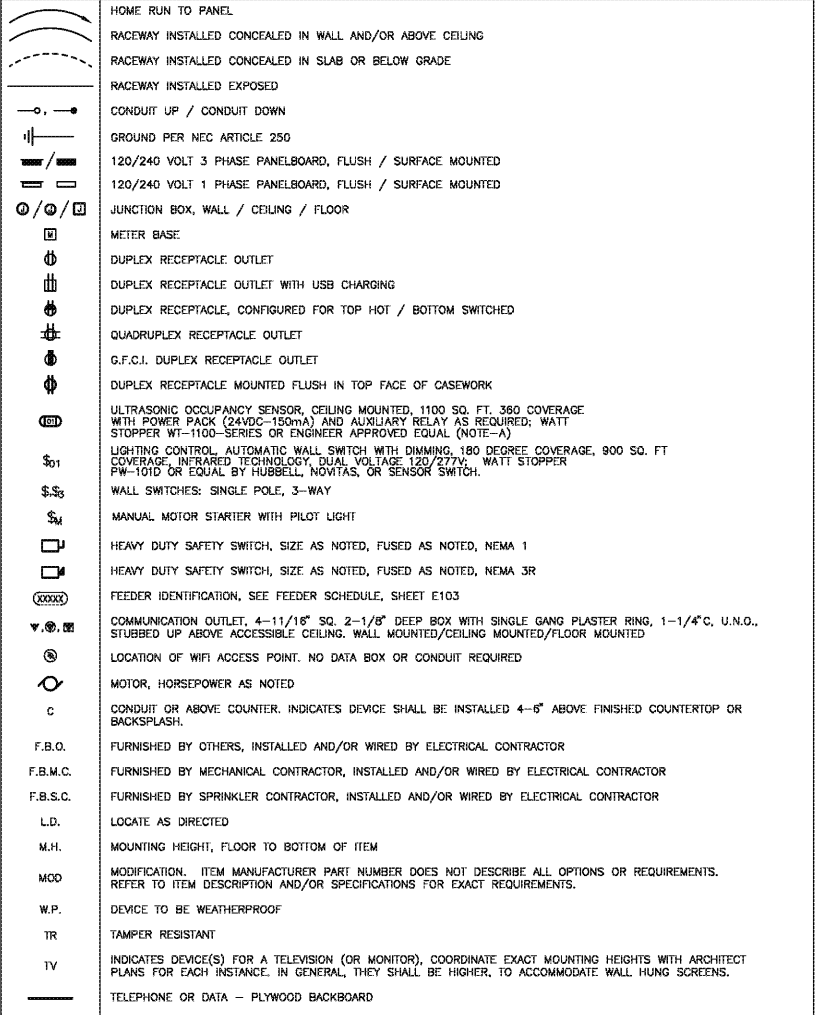
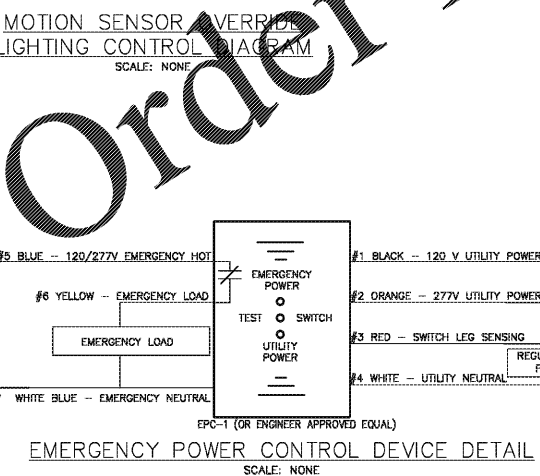
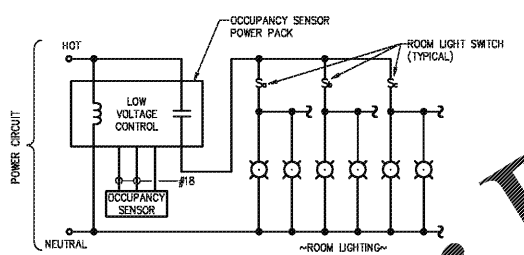


**LEGEND**



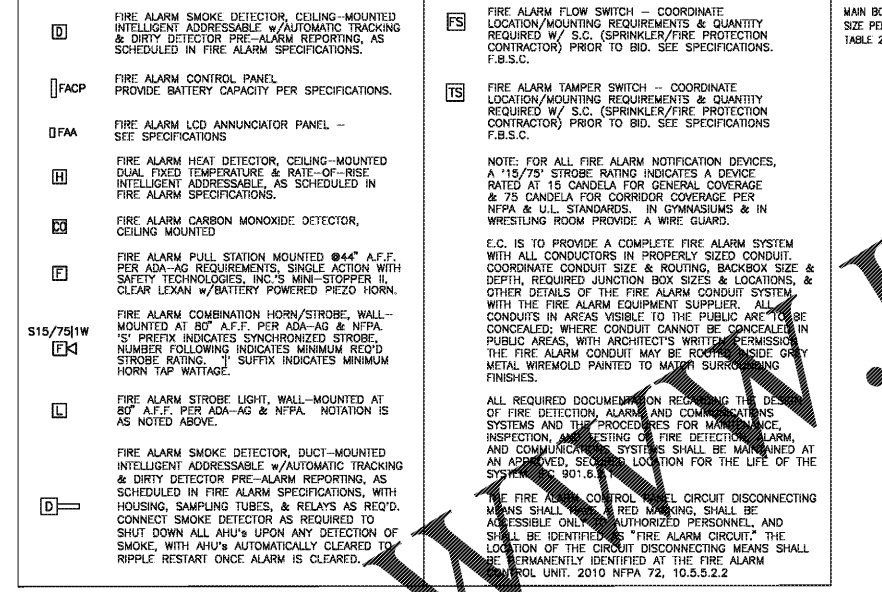
**ELECTRICAL LEGEND NOTES:**  
 A. OCCUPANCY SENSORS ARE SHOWN ON PLANS TO INDICATE ROOM LIGHTING CONTROL GENERAL COVERAGE. E.G. SHALL WALK-TEST THE INSTALLATION FOR PROPER COVERAGE AND ADJUST LOCATIONS AND QUANTITIES OF DEVICES ACCORDINGLY. SENSORS SHALL BE MOUNTED PER MANUFACTURERS RECOMMENDATIONS. ADHERE TO CLEARANCE DISTANCES FROM ALL DIFFUSERS. SET TIME DELAY FOR 30 MINUTES (MINIMUM).



**GENERAL NOTES**

- ALL WORK SHALL BE COORDINATED WITH THE WORK OF OTHER TRADES TO AVOID INTERFERENCES AND CONFLICTS. REFER TO THE DRAWINGS OF THE RESPECTIVE SYSTEMS PRIOR TO SUBMISSION OF BIDS FOR ADDITIONAL WORK WHICH MAY BE REQUIRED AS PART OF THIS WORK. NO ALLOWANCES WILL BE MADE FOR THE LACK OF COORDINATION BETWEEN DISCIPLINES OR SYSTEMS AND EQUIPMENT.
- THE WORK SHALL BE COORDINATED WITH THE ENGINEERING DOCUMENTS FOR THE EXACT LOCATION OF LIGHT FIXTURES, EQUIPMENT, DEVICES, ETC. TO ASSURE PROPER PLACEMENT OF SAID DEVICES AND EQUIPMENT. WHERE A CONFLICT EXISTS BETWEEN ANY TWO DOCUMENTS, NOTIFY THE ENGINEER FOR RESOLUTION PRIOR TO ANY ROUGH-IN OR INSTALLATION.
- THE CONTRACTOR SHALL VERIFY ALL EQUIPMENT BEING INSTALLED PRIOR TO INSTALLATION TO ASSURE THAT THE FEEDER, DISCONNECT, STARTER, OVERCURRENT PROTECTION, ETC. MATCHES THE ACTUAL NAMEPLATE DATA AS SUPPLIED BY THE MANUFACTURER.
- SPECIFIC REQUIREMENTS REGARDING MATERIALS, WORKMANSHIP AND THE WORK TO BE DONE ARE COVERED BY THE SPECIFICATIONS WHICH COMPLEMENT THE PLANS. WORK CALLED FOR BY THE SPECIFICATIONS OR THE PLANS IS REQUIRED THE SAME AS IF REQUIRED BY BOTH. WHERE A CONFLICT EXISTS BETWEEN THE PLANS AND SPECIFICATIONS, THE MORE STRINGENT REQUIREMENTS OF THE TWO SHALL APPLY UNLESS SPECIFICALLY APPROVED IN WRITING BY THE ENGINEER.
- REFER TO EQUIPMENT CUT SHEETS AND MANUFACTURER'S DATA FOR ROUGH IN LOCATIONS OF ELECTRICAL CONNECTIONS AND INTERCONNECTIONS OF ALL EQUIPMENT.
- INSTALL OVER CURRENT PROTECTION AND BRANCH CIRCUIT WIRING PER U.L. LISTING REQUIREMENTS FOR EQUIPMENT SERVED - REFER TO NAMEPLATE DATA.
- PROVIDE START-UP ASSISTANCE TO OWNER PERSONNEL AND EQUIPMENT TECHNICIANS TO CONFIRM CORRECT PHASE ROTATION, PROPER OPERATION AND SEQUENCE, AND CONTROLS.
- CONTRACTOR SHALL COORDINATE ELEVATIONS AND PIPING SYSTEM SLOPES SUCH THAT DUCTWORK, PIPING, RACEWAY, CABLE TRAY, AND ASSOCIATED EQUIPMENT IS INSTALLED AT UNIFORM ELEVATIONS WITH MINIMAL OFFSET. PROVIDE COORDINATION DRAWING TO ENGINEER FOR REVIEW PRIOR TO EQUIPMENT ORDERS AND ROUGH-IN.
- NOTE: ALL POWER, TELECOM, DATA, FIRE ALARM, SECURITY, SWITCH, & OTHER ELECTRICAL BOXES ARE TO BE STRAIGHT & LEVEL. NOTE ESPECIALLY THAT IN MULTI-GANG BOXES THE DEVICES CANNOT BE STRAIGHTENED BY ADJUSTING THE DEVICES. BOXES WHICH ARE NOTICEABLY NOT STRAIGHT WILL BE REJECTED, TO BE CHISELED OUT & RESET STRAIGHT!
- ALL ELECTRICAL COMPONENT INSTALLATIONS SHALL MEET REQUIREMENTS OF SEISMIC CATEGORY "C" OF 2006 IBC. ADD RESTRAINTS WHERE REQUIRED.
- ALL ELECTRICAL WORK SHALL MEET THE REQUIREMENTS FOR THE 2017 NEC CODE.

**FIRE ALARM DEVICE LEGEND**

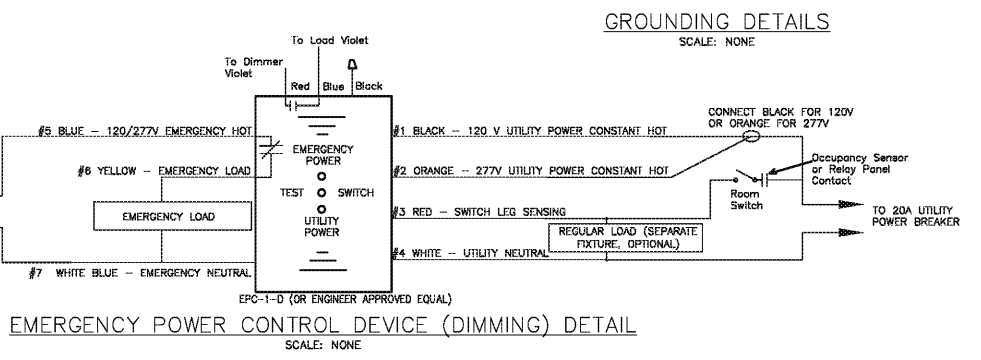
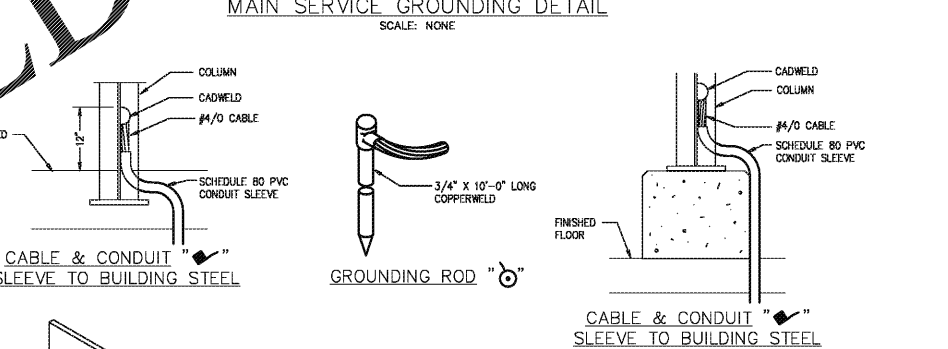
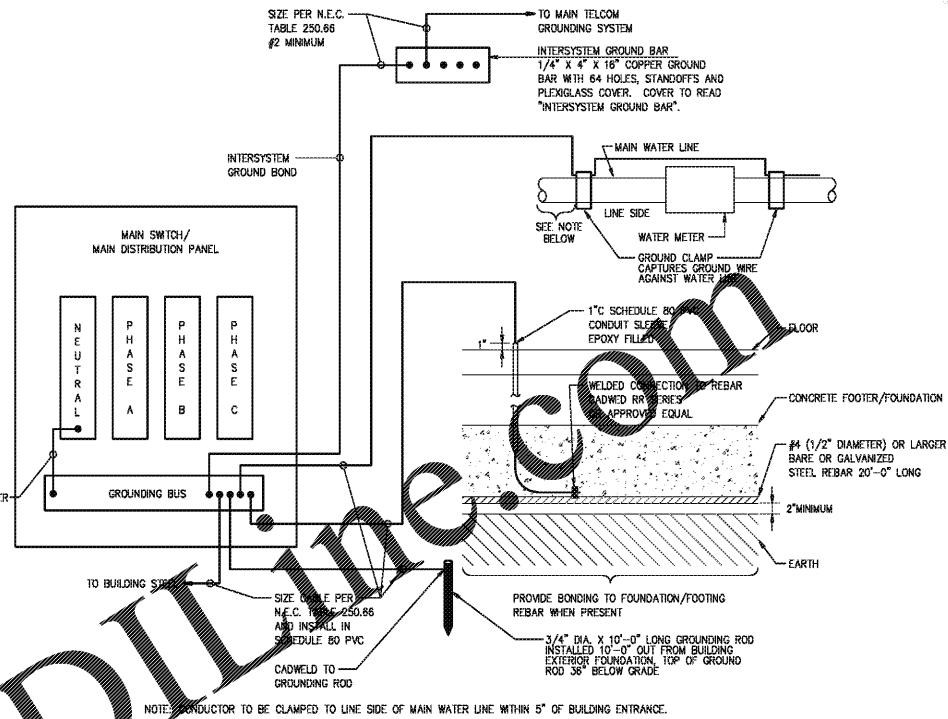


**LUMINAIRE SCHEDULE**

<b>A</b>	2'X4' RECESSED FLUX PANEL LED FIXTURE, 0-10V DIMMING STANDARD, 3500K, 80 CRI, 1200, 3800 NOMINAL LUMENS, 33 WATTS	2FXP-38L-B35-4-0S-UNV-DIM LUMEN OPTIX LUZ-24-0-40K-DU1 ABL-LITHONIA EPANL-24-40L-40K
<b>B</b>	2'X2' RECESSED FLUX PANEL LED FIXTURE, 0-10V DIMMING STANDARD, 3500K, 80 CRI, 1200, 3800 NOMINAL LUMENS, 32 WATTS	2FXP-38B-B35-2-DS-UNV-DIM OR ENGINEER APPROVED EQUAL
<b>C</b>	4' CIRCULITE LED SURFACE MOUNTED, 2800 LUMENS, 4000K, 120V, 31 WATTS.	SIGNIFY: CSW-48-28-40-U-D2T-20 OR ENGINEER APPROVED EQUAL
<b>D</b>	28" UNDERCABINET LINEAR LED FIXTURE, MVOLT, 3500K, 90 WATT, 827 LUMENS.	DAY-BRITE: LINC100E-L28-935-UNV-WHG-DIM OR ENGINEER APPROVED EQUAL
<b>E</b>	MEDIUM LED WALL SCONCE, 30 WATTS, 4000K, TYPE 3 DISTRIBUTION, 120V, COLOR TBD.	STONCO: LPW16-30-NW-G3-3-120-** OR ENGINEER APPROVED EQUAL

**EMERGENCY AND EXIT SCHEDULE**

<b>EXIT</b>	EXIT SIGN, LED COLOR TBD, EDGE/IT HOUSING, UNIVERSAL, AC POWER ONLY EMERGENCY BACKUP w/A INVERTER WITH SELF-DIAGNOSTICS CAPABILITIES.
<b>HATCH</b>	HATCH INDICATES NORMAL FIXTURE SHALL BE EMERGENCY FIXTURE POWERED BY INVERTER.



- FOR EMERGENCY LIGHTING ON DIMMABLE SWITCHING, EC SHALL USE EPC-1-D. EMERGENCY LIGHTING ON REGULAR SWITCH, EC SHALL USE EPC-1 OR ENGINEER APPROVED EQUALS.



**bloom architecture**  
 400 E. Main Street, #215 Chattanooga, TN 37408  
 design@bloomarch.com | 423-250-1951

**5700 BUILDING: INTERIOR RENOVATION**  
 951 EASTGATE LOOP CHATTANOOGA, TN 37411

PERMIT DOCUMENTS

No.	Description	Date

Project # 19161  
 20 MAR 2020  
 ELECTRICAL LEGENDS, NOTES, & SCHEDULES  
**E100**