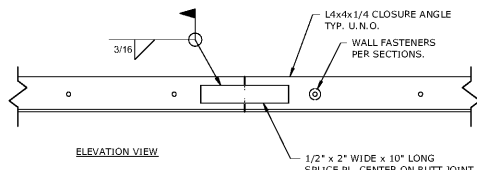


NOTE: DIMENSIONS (\*\*) SHALL BE OBTAINED FROM MECHANICAL ENGINEER/CONTRACTOR PRIOR TO DESIGN AND/OR FABRICATION OF SPECIAL GIRDERS AND JOISTS. SEE ROOF FRAMING PLAN FOR WEIGHTS OF ROOF TOP EQUIPMENT (WHERE WEIGHTS HAVE BEEN FURNISHED). CONTRACTOR SHALL VERIFY WEIGHTS AND LOCATIONS OF ALL ROOF TOP EQUIPMENT, AS THIS INFO IS SUBJECT TO CHANGE.

JOIST BRIDGING SHALL BE PER S.J.I. SPECIFICATIONS. AT ANY LOCATIONS WHERE INTERRUPTIONS IN JOIST BRIDGING ARE REQUIRED, MODIFICATIONS SHALL BE AS PER JOIST MANUFACTURERS PRINTED INSTRUCTIONS AND DETAILS.

**1** RTU FRAMING  
S4.1 SCALE: 3/4" = 1'-0"



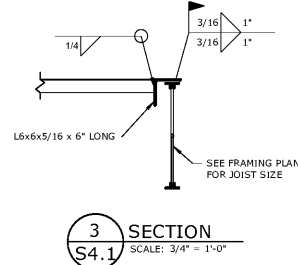
**6** TYPICAL CLOSURE ANGLE SPLICE  
S4.1 SCALE: 1 1/2" = 1'-0"

L OF FRAME IN POSITION AS REQUIRED TO SUIT DIMENSIONS OF ROOF-TOP UNIT. USE L3x3x1/4 IF WEIGHT OF UNIT IS LESS THAN 1,500 LBS. USE L4x4x1/4 IF WEIGHT OF UNIT IS BETWEEN 1,500 AND 3,000 LBS. USE L5x5x5/16 IF WEIGHT OF UNIT IS ABOVE 3,000 LBS.

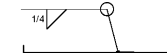
PROVIDE P.T. 2x4 BLOCKING UNDER ROOF DECK BELOW PERIMETER OF CURB WHERE REQUIRED TO PREVENT DECK FROM CRUSHING UNDER THE WEIGHT OF ROOF-TOP UNIT.

JOIST MANUFACTURER: PROVIDE SPECIAL JOISTS DESIGNED FOR WEIGHT OF RTU'S. SEE ROOF FRAMING PLAN FOR ADD'L INFO.

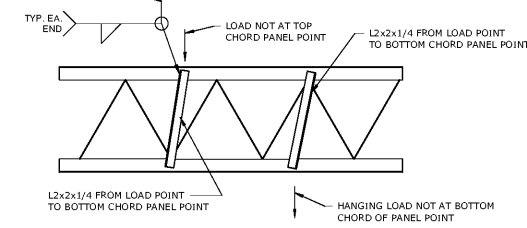
**2** TYPICAL R.T.U. SUPPORT FRAME  
S4.1 SCALE: 3/4" = 1'-0"



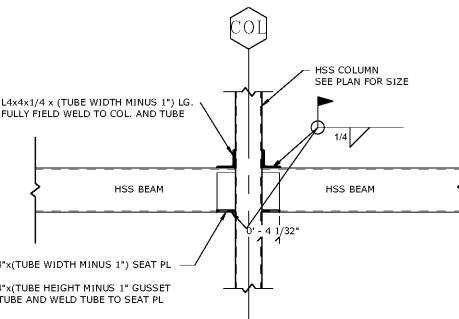
**3** SECTION S4.1 SCALE: 3/4" = 1'-0"



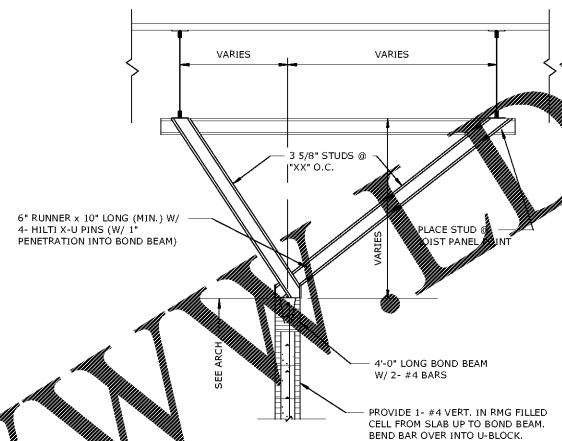
**4** SECTION S4.1 SCALE: 3/4" = 1'-0"



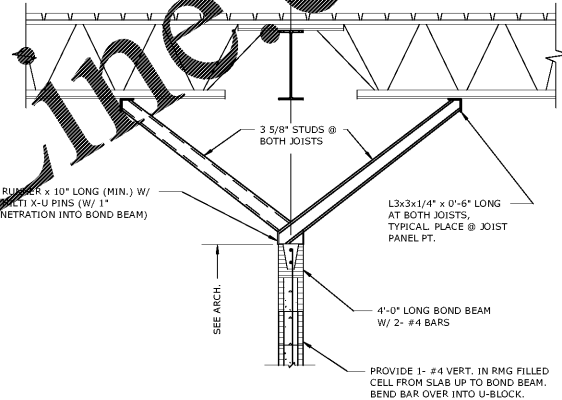
**5** TYPICAL JOIST WEB REINFORCEMENT DETAIL  
S4.1 SCALE: 3/4" = 1'-0"



**7** TUBE FRAMING SECTION  
S4.1 SCALE: 3/4" = 1'-0"



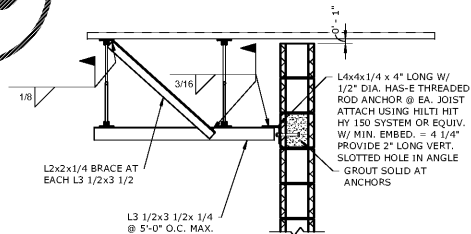
**8** DETAIL AT WALL SUPPORT BRACING (PARALLEL)  
S4.1 SCALE: 3/4" = 1'-0"



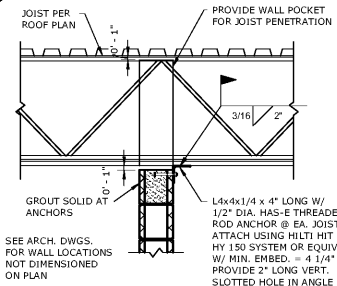
**9** DETAIL AT WALL SUPPORT BRACING (PERP.)  
S4.1 SCALE: 3/4" = 1'-0"

ENTIRE ASSEMBLY REQUIRED AT "XX" O.C. MAX. ONLY WHERE LONG INTERIOR NON-LOADBEARING WALLS ARE NOT INTERSECTED BY PERPENDICULAR WALLS AT "XX" O.C. OR LESS.

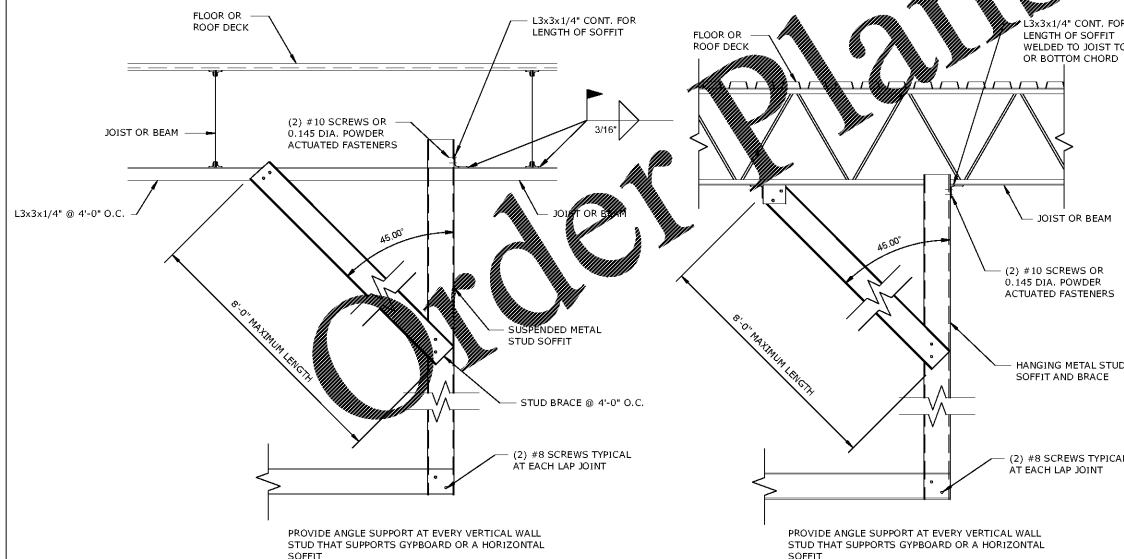
\*XX\* DIMENSION = 12'-0" IN STACKED BOND WALLS  
\*XX\* DIMENSION = 15'-4" IN RUNNING BOND WALLS



**12** WALL BRACING PARALLEL TO FRAMING  
S4.1 SCALE: 3/4" = 1'-0"



**13** WALL BRACING PERPENDICULAR TO FRAMING  
S4.1 SCALE: 3/4" = 1'-0"



**10** SOFFIT SUPPORT - PARALLEL TO JOIST  
S4.1 SCALE: 3/4" = 1'-0"

**11** SOFFIT SUPPORT - PERPENDICULAR TO JOISTS  
S4.1 SCALE: 3/4" = 1'-0"

NO	DESCRIPTION	DATE

RUSSOM ELEMENTARY SCHOOL ADDITION  
44 RUSSOM ELEMENTARY SCHOOL LANE  
DALLAS, GA 30132  
(FACILITY CODE: 710-0204)  
PAULDING COUNTY SCHOOLS

ROOF FRAMING SECTIONS

DATE	03/06/2020
PROJECT NO.	19117

S4.1



BREAUX & ASSOCIATES ARCHITECTS  
5965 Shiloh Road East, Suite 900  
Alpharetta, Georgia 30005 | (770) 565-4508  
P.L.L.C.

**B&A**  
Breaux & Associates  
ARCHITECTS  
5965 Shiloh Road East, Suite 900  
Alpharetta, Georgia 30005 | (770) 565-4508