

INTERIOR COLOR SCHEDULE

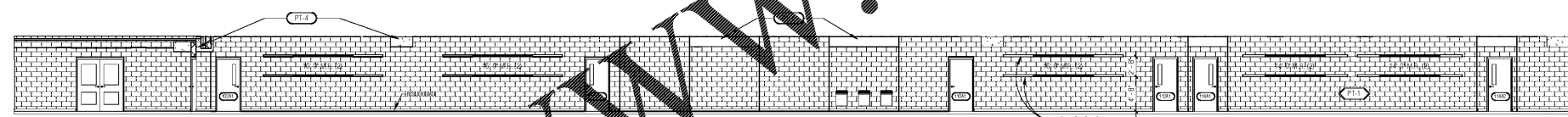
REF	DESCRIPTION	MANUFACTURER MODEL	SIZE	COLOR	INSTALLATION NOTES
FLOOR FINISH					
0803'S CERAMIC TILING (CT)					
CT-1	CERAMIC FLOOR TILE	INTERCERAMIC CONCRETE	12"x12"	T.B.D.	ALL AREAS SCHEDULED TO RECEIVE CT, U.N.D.
0804'S TILE FLOORING					
LVT-1	LUXURY VINYL TILE	ARMSTRONG, ARBORART FLOORCUTS, RAW GRETE	18"x18"	(FIELD COLOR)	WHERE NOTED
LVT-2	LUXURY VINYL TILE	ARMSTRONG, ARBORART FLOORCUTS, RAW GRETE	18"x18"	(FIELD COLOR)	WHERE NOTED
LVT-3	LUXURY VINYL TILE	ARMSTRONG, ARBORART FLOORCUTS, RAW GRETE	18"x18"	(HIGHLIGHT)	WHERE NOTED
LVT-4	LUXURY VINYL TILE	ARMSTRONG, ARBORART FLOORCUTS, RAW GRETE	18"x18"	(ACCENT)	WHERE NOTED
LVT-5	LUXURY VINYL TILE	ARMSTRONG, ARBORART FLOORCUTS, RAW GRETE	18"x18"	(ACCENT)	WHERE NOTED
LVT-P1	LUXURY VINYL TILE	ARMSTRONG, ARBORART FLOORCUTS, RAW GRETE	18"x18"	(FIELD COLOR)	ALL AREAS SCHEDULED TO RECEIVE LVT, UNLESS NOTED OTHERWISE
0802'S DECORATIVE RESINUS FLOORING (EPK)					
EPK-1	DECORATIVE RESINUS FLOORING	KEY RESIN, KEY QUARTZ B-125	BROADCAST	T.B.D.	ALL AREAS SCHEDULED TO RECEIVE EPK, U.N.D.
0801'S TILE CARPETING (CPT)					
CPT-1	CARPET	---	---	T.B.D.	ALL AREAS SCHEDULED TO RECEIVE CPT, U.N.D.
0801'S INTERIOR PAINT					
S.CN.	SEALED CONCRETE	---	---	---	ALL AREAS SCHEDULED, U.N.D.
WALL BASE					
RB-1	RESILIENT BASE	AS SPECIFIED	4" HIGH	T.B.D.	ALL AREAS SCHEDULED TO RECEIVE NEW RB, U.N.D.
CEILING MATERIAL					
0801'S ACOUSTICAL PANEL CEILING (ACT)					
ACT-1	ACOUSTICAL CEILING ASSEMBLY, TYPE 1	ARMSTRONG, CORTEGA W/ PRELUDE XL	24"x24"	WHITE	ALL AREAS TO RECEIVE ACT, U.N.D.
ACT-2	ACOUSTICAL CEILING ASSEMBLY, TYPE 2 SCALABLE	ARMSTRONG, UNPERFORATED W/PERLUCE XL	24"x24"	WHITE	WHERE NOTED
FLOOR FINISH					
0801'S RESILIENT ACCESSORIES					
RB-2	RESILIENT ACCESSORIES	---	---	---	LVT TO S. CN.
RB-3	RESILIENT ACCESSORIES	---	---	---	LVT TO CPT
WALL/CEILING FINISH					
0801'S INTERIOR PAINT					
GWC-1	GLAZED WALL COATING	SHERWIN WILLIAMS	---	(FIELD COLOR)	ALL AREAS SCHEDULED TO RECEIVE GWC, U.N.D.
GWC-2	GLAZED WALL COATING	SHERWIN WILLIAMS	---	CREAMY	ALL HARD CEILING SCHEDULED TO RECEIVE GWC, U.N.D.
PT-1	INTERIOR PAINT	SHERWIN WILLIAMS	---	(FIELD COLOR)	ALL AREAS SCHEDULED TO RECEIVE PT, U.N.D.
PT-2	INTERIOR PAINT	SHERWIN WILLIAMS	---	(CEILING WHITE)	ALL HARD CEILING SCHEDULED TO RECEIVE PT, U.N.D.
PT-3	INTERIOR PAINT	SHERWIN WILLIAMS	---	T.B.D.	ALL HOLLOW METAL DOORS AND FRAMES, INCLUDING GILLES AND LITE FRAMES, U.N.D.
PT-4	INTERIOR PAINT	SHERWIN WILLIAMS	---	(ACCENT)	SOFFITS, WHERE NOTED
0801'S INTERIOR PAINT - DRY FALL INSTALLATION					
DF-1	DRY FALL SYSTEM	---	---	T.B.D.	ALL AREAS SCHEDULED TO RECEIVE DF, U.N.D.
MISCELLANEOUS FINISHES					
0801'S SOLID SURFACE					
SF-1	SOLID SURFACE	WILSONART	---	T.B.D.	WINDOW SILLS, U.N.D.
0801'S PREFINISHED WOOD DOOR STAIN					
WDS-1	PREFINISHED WOOD DOOR STAIN	---	---	---	TO MATCH EXISTING
101100 - VISUAL DISPLAY UNITS					
MS-1	MARKERBOARD	---	---	T.B.D.	ALL MARKERBOARDS
MR	MAP RAIL	---	---	T.B.D.	ALL MAP RAILS
TR-1	TRACKBOARD	---	---	T.B.D.	ALL TRACKBOARDS
120126 - MANUFACTURED CASEWORK					
0.5 MM	PLASTIC LAMINATE	WILSONART	---	T.B.D.	ALL CABINETS BODY FRONT
3 MM	PLASTIC LAMINATE	WILSONART	---	T.B.D.	ALL DOORS AND DRAWERS EDGE
PL-1	PLASTIC LAMINATE	WILSONART	---	T.B.D.	ALL BASE AND WALL CABINETS, U.N.D.
PL-2	PLASTIC LAMINATE	WILSONART	---	T.B.D.	ALL COUNTERTOPS, U.N.D.

ROOM FINISH SCHEDULE

ROOM NO	ROOM NAME	FLOORS		WALLS		CEILING		COMMENTS
		FINISH	WALL BASE	MATERIAL/SUBSTRATE	FINISH	MATERIAL	FINISH	
100A	CORRIDOR	LVT/CT	RB	CMU	PT	ACT/GB	---PT	
100B	CORRIDOR	LVT/CT	RB	CMU	PT	ACT/GB	---PT	
100C	CORRIDOR	LVT/CT	RB	CMU	PT	ACT/GB	---PT	
100D	CORRIDOR	LVT/CT	RB	CMU	PT	ACT/GB	---PT	
101A	RISER	S.CN.	---	CMU	---	EAS	DF	
102A	CLASSROOM	CPT	RB	CMU	PT	ACT	---	
103A	UTILITY	S.CN.	---	CMU	---	EAS	DF	
104A	CLASSROOM	CPT	RB	CMU	PT	ACT	---	
105A	STORAGE	S.CN.	---	CMU	---	ACT	---	
106A	BOYS RESTROOM	EPK	EPK	CMU	DWC	GFP	PT	
107A	JANITOR	S.CN.	RB	CMU	DWC	ACT	---	
108A	GIRLS RESTROOM	EPK	EPK	CMU	DWC	GFP	PT	
109A	OFF	LVT	RB	CMU	PT	ACT	---	
110A	WORKROOM	LVT	RB	CMU	PT	ACT	---	
110B	RB	CT	CT	CMU	DWC	GFP	PT	
111A	ELIG	S.CN.	---	CMU	---	---	---	
112A	CLASSROOM	CPT	RB	CMU	PT	ACT	---	
113A	OFFICE	CPT	RB	CMU	PT	ACT	---	
114A	ART	CPT	RB	CMU	PT	ACT	---	
115A	CLASSROOM	CPT	RB	CMU	PT	ACT	---	
115B	CLOSET	CPT	RB	CMU	PT	ACT	---	
116A	CLASSROOM	CPT	RB	CMU	PT	ACT	---	
117A	CLASSROOM	CPT	RB	CMU	PT	ACT	---	
118A	CLASSROOM	CPT	RB	CMU	PT	ACT	---	
119A	CLASSROOM	CPT	RB	CMU	PT	ACT	---	
120A	CLASSROOM	CPT	RB	CMU	PT	ACT	---	
121A	CLASSROOM	CPT	RB	CMU	PT	ACT	---	
122A	CLASSROOM	CPT	RB	CMU	PT	ACT	---	
123A	CLASSROOM	CPT	RB	CMU	PT	ACT	---	
124A	CLASSROOM	CPT	RB	CMU	PT	ACT	---	
125A	CLASSROOM	CPT	RB	CMU	PT	ACT	---	
126A	CLASSROOM	CPT	RB	CMU	PT	ACT	---	
127A	CLASSROOM	CPT	RB	CMU	PT	ACT	---	
128A	TEAM PLANNING	CPT	RB	CMU	PT	ACT	---	

FLOOR TRANSITION SCHEDULE

ROOM NO	ROOM NAME	FINISH	WALL BASE	DESCRIPTION	PROVISION
LVT	1/8" / ST. CN.	0"	1/8"	RESILIENT REDUCER STRIP	08 30 13 (CT)
LVT	1/8" CPT	1/8"	0"	RESILIENT CARPET REDUCER	08 65 13 (RA)
LVT	1/8" EPK	1/8"	0"	TYPE 1 METAL DIVIDER STRIP	08 30 13 (CT)
LVT	1/8" EPK	1/8"	0"	ALUMINUM REDUCER, TYPE 1 MARBLE THRESHOLD	08 67 23 (EPK)



1 ELEVATION MAIN CORRIDOR
AT 0 SCALE: 1/8" = 1'-0"



2 ELEVATION CLASSROOM CORRIDOR
AT 0 SCALE: 1/8" = 1'-0"

Order Plans

INTERIOR ELEVATIONS LEGEND

GENERAL NOTES

SYMBOL LEGEND

- ? OVERHEAD COLOR DESIGNATION - REF. COLOR SCHEDULE ON SHEET A7.0
- 1 FLOOR COLOR DESIGNATION - REF. COLOR SCHEDULE ON SHEET A7.0
- 7 WALL COLOR DESIGNATION - REF. COLOR SCHEDULE ON SHEET A7.0

**RUSSOM ELEMENTARY SCHOOL
ADDITION
44 RUSSELL ELEMENTARY SCHOOL LANE
DALLAS, GA 30132
(FACILITY CODE: 7110-0204)**

PAULDING COUNTY SCHOOLS

**INTERIOR FINISH
SCHEDULE &
DETAILS**

DATE: 03/06/2020
PROJECT NO.: 19117

A7.0