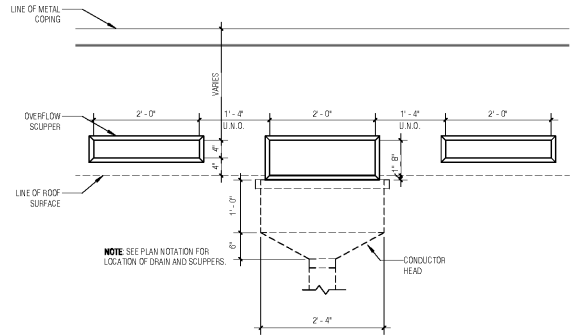
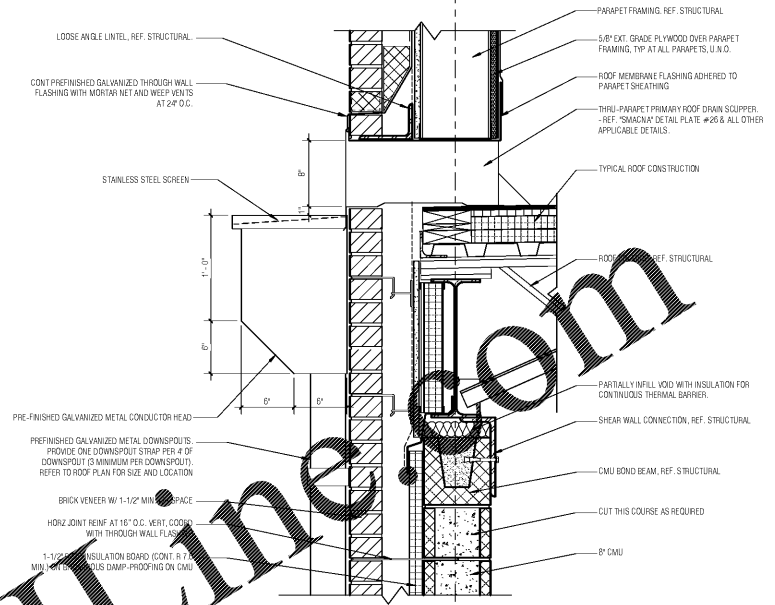


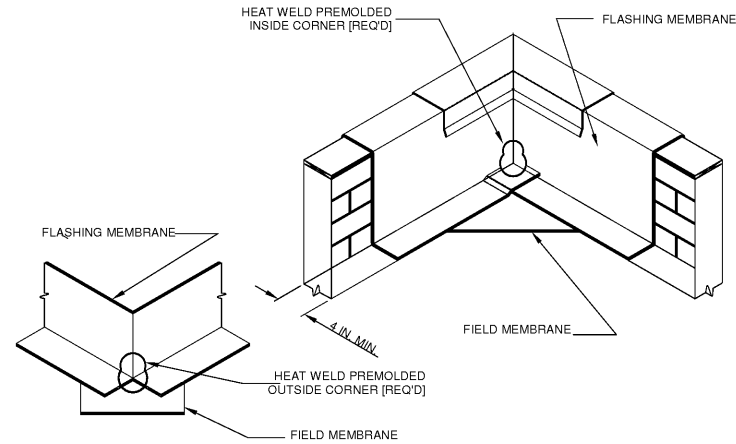
**4 RTU ROOF CURB**  
A1.2 SCALE: 1 1/2" = 1'-0"



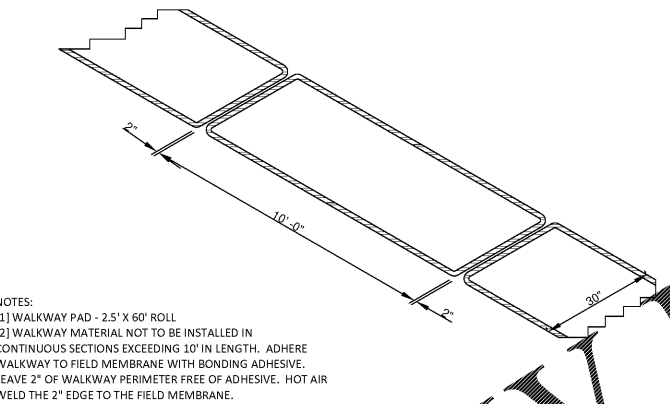
**3 OVERFLOW SCUPPER DETAIL**  
A1.2 SCALE: 3/4" = 1'-0"



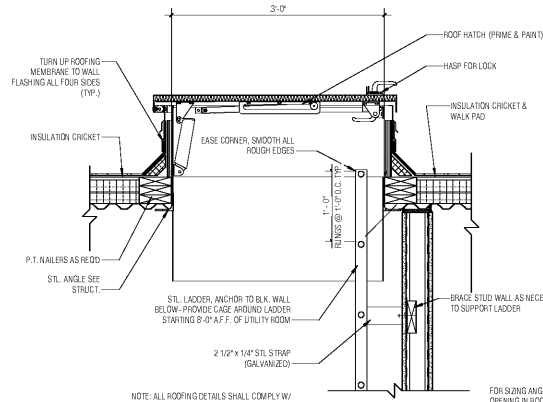
**2 TYP. SCUPPER DETAIL**  
A1.2 SCALE: 1 1/2" = 1'-0"



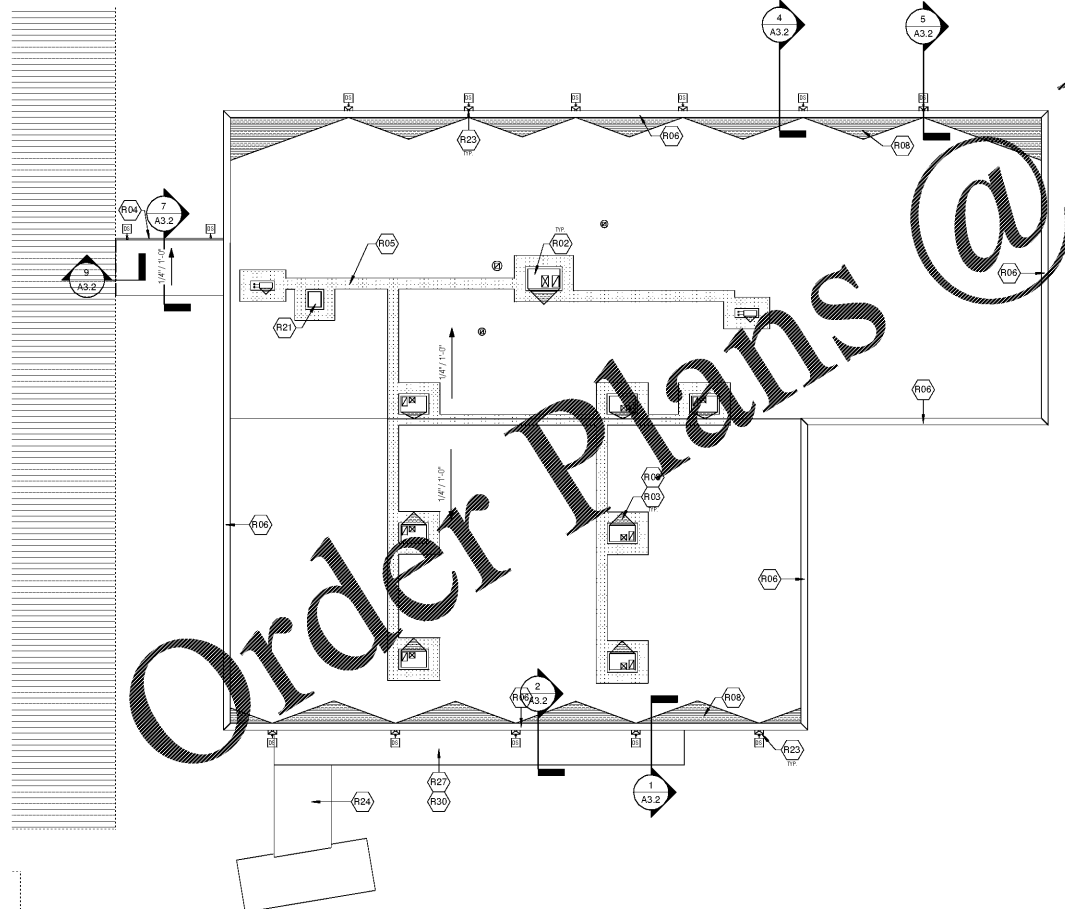
**6 INSIDE / OUTSIDE CORNER**  
A1.2 SCALE: 1" = 1'-0"



**5 WALKWAY PAD**  
A1.2 SCALE: 1" = 1'-0"



**7 ROOF HATCH DETAIL**  
A1.2 SCALE: 1" = 1'-0"



**1 ROOF PLAN**  
A1.2 SCALE: 1/16" = 1'-0"

**8 EXPANSION JOINT DETAIL**  
A1.2 SCALE: 1 1/2" = 1'-0"

GENERAL NOTES			ROOF PLAN LEGEND		DRAWING NOTES	
A.	EXTEND ALL ROOF CURBS AND MECHANICAL PENETRATIONS A MINIMUM OF 8 INCHES ABOVE ROOF ASSEMBLY SURFACE, UNLESS NOTED OTHERWISE.		PARAPET COND. TON - REF. WALL SECTIONS	ROOF CROCKET LOCATION, REF. GENERAL NOTES	KEYNOTE LEGEND - ROOF	
B.	PROVIDE TAPERED INSULATION CROCKETS AT ALL INTERRUPTIONS TO THE DOWNWARD SLOPE OF WATER. CONTINUOUS MEMBRANE FLASHING SHALL BE INSTALLED UP AND OVER THE TOPS OF ROOF CURBS, PARAPET WALLS AND ALL END AND TURN CONDITIONS, INCLUDING EXPANSION JOINTS.		GUTTER WITH DOWNSPOUTS CONDITION - REF. WALL SECTIONS	REINFORCED WALKWAY	ID	DESCRIPTION
C.	PROVIDE CONTINUOUS FLASHING FROM VERTICAL TO HORIZONTAL ASSEMBLIES ALONG ROOF, INCLUDING EXPANSION JOINTS.			EXPANSION JOINT	R02	ROOF TOP MECHANICAL EQUIPMENT, REFER TO MECHANICAL DRAWINGS.
D.	PROVIDE MEMBRANE FLASHING UNDER ALL SHEET METAL FLASHING, UNLESS NOTED OTHERWISE.				R03	PROVIDE ROOF CROCKET AT ALL ROOF TOP EQUIPMENT, TYP.
E.	ALL METAL FLASHING PROFILES SHALL BE SHOP FABRICATED.				R04	PREFINISHED GALVANIZED METAL GUTTER AND DOWNSPOUTS, WHERE NOTED: GUTTERS SHALL BE 6" X 6" BEVELED PROFILE. DOWNSPOUTS SHALL BE 6" X 6" AND SHALL BE INTO STORM SEWER, COORDINATE WITH CIVIL.
F.	ALL JOINTS IN METAL CORNERS SHALL BE STANDING SEAM.				R05	REINFORCED ROOF WALKWAY PAD, ROUTE TO AND AROUND ROOF TOP EQUIPMENT.
G.	PROVIDE NEOPRENE GROMMETTED FASTENERS AT 24" O.C. ALONG THE ROOF OR NON-VISIBLE SIDE OF ALL METAL CORNING.				R06	PARAPET CONDITION - REF. EXTERIOR ELEVATIONS FOR HEIGHTS AND CORBELING, WALL SECTIONS FOR CONSTRUCTION EXTENTS.
H.	PROVIDE CONTINUOUS CLEAT FASTENERS ALONG THE FRONT OR VISIBLE SIDE OF ALL METAL CORNING.				R08	TAPERED ROOF INSULATION CROCKET, TYP.
I.	PROVIDE END WALL CAPS AT ALL GRAVEL STOPS, TYP.				R21	ROOF ACCESS HATCH, COORDINATE WITH ACCESS LADDER ASSEMBLY.
J.	ALL INTERSECTIONS, TEES, AND TRANSITIONS IN ROOF EXPANSION JOINTS SHALL BE PREFABRICATED.				R23	PREFINISHED GALVANIZED METAL SCUPPER AND DOWNSPOUTS, WHERE NOTED: PRIMARY SCUPPER SHALL BE 8" X 24". SECONDARY SCUPPERS SHALL BE 4" X 24". DOWNSPOUTS SHALL BE 6" X 6" AND SHALL BE INTO STORM SEWER, COORDINATE WITH CIVIL.
K.	PROVIDE ALL ROOF-BUILDING EXPANSION JOINTS WITH WATER TIGHT VAPOR BARRIER.				R24	PREFINISHED PRE-ENGINEERED ALUMINUM CANOPY ASSEMBLY WITH INTEGRATED DOWNSPOUTS - REF. SIDEWALK PLAN.
L.	NO CLEAR SILICONE SEALANT SHALL BE USED IN THE ROOF ASSEMBLY.				R27	PREFINISHED PRE-ENGINEERED ALUMINUM CANOPY ASSEMBLY SUPPORTED FROM BUILDING STRUCTURE - REF. SIDEWALK PLAN.
M.	PROVIDE DOWNSPOUTS PER OR SIMILAR SEALANT WITH BACKER ROD AT ALL CONNECTIONS BETWEEN DISSIMILAR MATERIALS.				R30	INTEGRAL DOWNSPOUTS PROVIDED BY CANOPY MANUFACTURER, REF. INTO STORM SEWER, REF. CIVIL.
N.	PROVIDE DOWNSPOUTS PER OR SIMILAR SEALANT AT ALL METAL TO METAL CONNECTIONS.					
O.	ALL DOWNSPOUTS SHALL BE TO STORM SEWER BELOW GRADE. COORDINATE WITH CIVIL DRAWINGS.					
P.	PAINT ALL GAS LINES "SAFETY YELLOW" EXCEPT VERTICAL AND OVERPARAPET LINES, WHICH SHALL BE PAINTED TO MATCH ADJACENT SURFACE COLOR.					
Q.						



**BXA**  
Breaux & Associates  
ARCHITECTS  
5965 Shiloh Road East, Suite 200  
Alpharetta, Georgia 30005 | (770) 565-4568

ID	DESCRIPTION	DATE

**RUSSOM ELEMENTARY SCHOOL ADDITION**  
44 RUSSELL ELEMENTARY SCHOOL LANE  
DALLAS, GA 30132  
(FACILITY CODE: 7110-0204)

**PAULDING COUNTY SCHOOLS**

ROOF PLAN & DETAILS	
DATE	03/06/2020
PROJECT NO.	19117
<b>A1.2</b>	