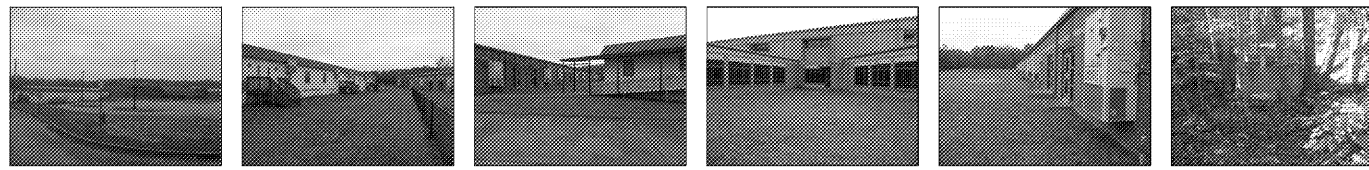


COLOR OF CURB ACCORDING TO SECTION

SITE PHOTOGRAPHS

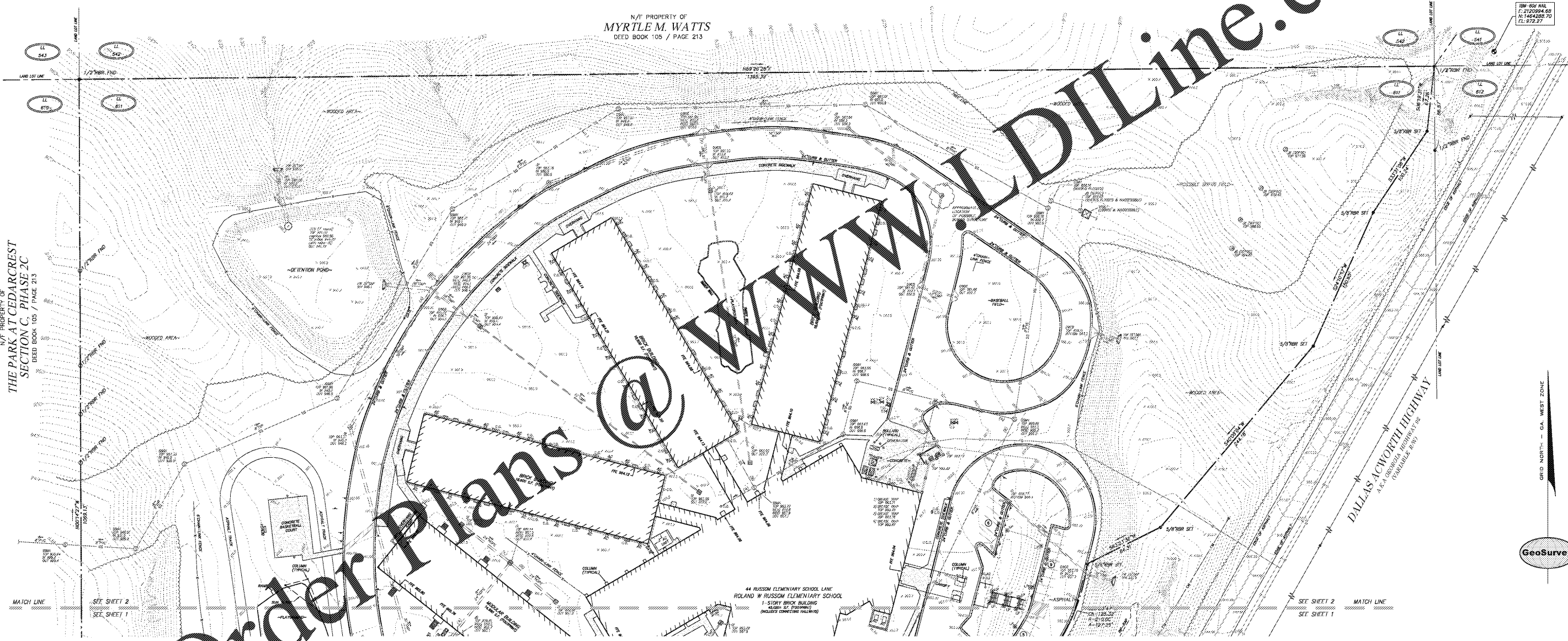


1 2 3 4 5 6

LEGEND

STANDARD ABBREVIATIONS	STANDARD SYMBOLS
AC AIR CONDITIONER	○ OVERHEAD TRAFFIC SIGNAL LIGHT
SHI SORE HOLE	⚡ POWER POLE
B/L BUILDING SETBACK LINE	— OUT WIRE
Q CURB INLET	— POWER LINE
CMP CORRUGATED METAL PIPE	⊠ LIGHT POLE
CM CONCRETE MONUMENT FND	⊠ ELECTRIC TRANSFORMER
CO SANITARY CLEANOUT	⊠ WATER VAULT
CPD COMMUNICATION PEDESTAL	⊠ GAS VALVE
CIP CRIMPED TOP PIPE	⊠ GAS METER
DMF DRY WELL	⊠ WATER VALVE
DIP DUCTILE IRON PIPE	⊠ WATER METER
DWB DOUBLE WING CATCH BASIN	⊠ FIRE HYDRANT
FNG FENCE	⊠ UNDERGROUND ELECTRIC LINE
FND FOUND	⊠ UNDERGROUND GAS LINE
GM GAS METER	⊠ UNDERGROUND WATER LINE
HW HYDRANT	⊠ UNDERGROUND COMMUNICATION LINE
JB JUNCTION BOX	⊠ UNDERGROUND WATER LINE
MI MANHOLE	⊠ PHOTO POSITION INDICATOR
OCIS OUTLET CONTROL STRUCTURE	⊠ REGULAR PARKING SPACE COUNT
OP OPEN TOP PIPE	⊠ HANDICAP PARKING SPACE
PM POWER METER	⊠ TREE POSITION INDICATOR
PKS PK NAIL SET	
PKB POINT OF BEGINNING	
POC POINT OF COMMENCEMENT	
RCF REINFORCED CONCRETE PIPE	
RBR REINFORCED BRICK	
RSS 3/8" RIB SET CRIMPED LSF 62'	
SS SANITARY SEWER	
SWB SWIRLING WING CATCH BASIN	
TRANS TRANSFORMER	

N/F PROPERTY OF MYRTLE M. WATTS DEED BOOK 105 / PAGE 213



Order Plans @ WWW.LDILine.com

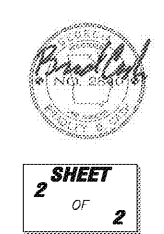
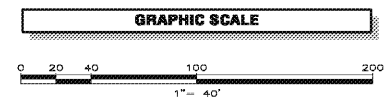
THE PARK AT CEDARCREST SECTION C, PHASE 2C DEED BOOK 105 / PAGE 213

DALLAS ACWORTH HIGHWAY

44 RUSSEM ELEMENTARY SCHOOL LANE ROLAND W. RUSSEM ELEMENTARY SCHOOL 1-STORY BRICK BUILDING (MAJOR CONC. FOUNDATION)

IF YOU DIG

Know what's below. Call before you dig. Dial 811 Or Call 800-282-7411



Land Surveying • 3D Laser Scanning
 1680 Barnes Mill Road
 Marietta, Georgia 30052
 Phone: (770) 795-9900
 Fax: (770) 795-8880
 www.geosurvey.com
 EMAIL: info@geosurvey.com
 Certificate of Authorization #LSF-000621

2 SHEET OF 2

BOUNDARY & TOPOGRAPHIC SURVEY OF			
Russom Elementary School District			
FOR			
Paulding County School District			
GS JOB NO:	20196291	DRAWING SCALE:	1" = 40'
FIELD WORK:	MV	CITY:	DALLAS STATE: GA
PROJ MGR:	BDC	COUNTY:	PAULDING
REVIEWER:	JRC	LAND LOT:	611
DWG FILE:	20196291.dwg	DISTRICT:	3rd SECTION: 3rd
SURVEY DATE:		10/23/2019	
INSIDING			
No.	Date	Description	