





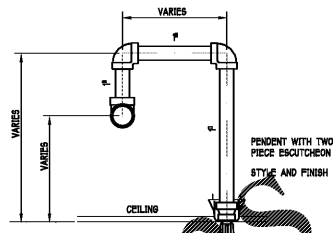
Sheet Template ID: CFE-F-07-B  
 File: Z:\Projects\4802\_South Charlotte Hyundai Redesign\4802SP1\_SPRINKLER NOTES, LEGEND & DETAILS.dwg, Plotted: 3/1/2020 4:29 PM by DANIEL PAYNE, Saved: 3/1/2020 4:08 PM by DPAVINE

**FIRE PROTECTION GENERAL NOTES**

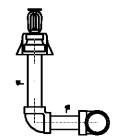
- THE FIRE PROTECTION OF THIS BUILDING SHALL BE IN ACCORDANCE WITH STATE AND LOCAL CODES AND SHALL CONFORM TO 2010 NFPA 13 & 58 GENERAL REQUIREMENTS AND IN FULL COMPLIANCE WITH LOCAL AGENCIES AND COUNTY FIRE MARSHAL.
- A COMPLETE AUTOMATIC WET SPRINKLER SYSTEM SHALL BE PROVIDED IN ALL CONDITIONS SPACES AND A DRY SPRINKLER SYSTEM SHALL BE PROVIDED FOR THE FOLLOWING AREAS: SERVICE DRIVE, DETAIL, WASH, PHOTO, CONTAINMENT, AND TIRE STORAGE.
- THE CONTRACTOR SHALL PRODUCE SHOP DRAWINGS OF A 13 SYSTEM WITH 13 HEAD SPACING IN THE TENANT SPACES SHOWING COORDINATION WITH ALL STRUCTURAL AND HVAC COMPONENTS. THE CONTRACTOR SHALL ALSO PRODUCE THEIR OWN HYDRAULICALLY DESIGNED SYSTEM FOR REVIEW AND APPROVAL BY THE LOCAL FIRE MARSHAL'S OFFICE AND ARCHITECT FOR USE ON THIS PROJECT.
- THE DESIGN HYDRAULIC CALCULATIONS, MATERIALS AND ACTUAL LAYOUTS SHALL BE BY A SPECIALTY ENGINEER, WHO IS A PROFESSIONAL ENGINEER OR NICET LEVEL 3 OR HIGHER AS REQUIRED BY STATE LAW LICENSED FOR FIRE PROTECTION DESIGN. THE DESIGN SHALL BE SIGNED BY THE ENGINEER AND INCLUDE LICENSE NUMBER ON DRAWINGS.
- PRIOR TO HYDRAULIC CALCULATIONS OBTAIN APPROVED FIRE FLOW DATA (SPM AND PRESSURE) FROM THE NEAREST WATER SUPPLY, FROM THE FIRE MARSHAL.
- SPRINKLERS IN AREAS WITH CEILING SHALL BE CHROME PLATED WITH TWO PIECE CHROME PLATED ESCUTCHEONS. SPRINKLERS IN EXPOSED AREAS SHALL BE UPRIGHT. SPRINKLER PIPING TO BE EXPOSED IN ALL AREAS WITHOUT FUR-DOWN CEILING. SPRINKLER SUB-CONTRACTOR SHALL COORDINATE DESIGN WITH EXPOSED DUCTWORK AND LIGHTING.
- A BACKFLOW PREVENTER ASSEMBLY IN ACCORDANCE WITH UTILITY COMPANY RESTRICTIONS SHALL BE PROVIDED IN THE RISER ROOM OF EACH BUILDING.
- THE WATER SUPPLY FIRE LINE SHALL ENTER THE BUILDING AT THE LOCATION SHOWN ON THE PLAN.
- ALL COMPONENTS USED IN THE SPRINKLER SYSTEM SHALL BE UL APPROVED FOR USE WITH SPRINKLERS.
- THE DESIGN SHALL ACCOUNT FOR ALL DUCTWORK, LIGHTS AND OTHER OBSTRUCTIONS DO NOT ROUTE PIPING THROUGH THE DUCTWORK TO SHOW PROPER INSTALLATION OF ALL SPRINKLER WORK. THE GENERAL CONTRACTOR SHALL COORDINATE CLEARANCES WITH THE SPRINKLER PIPING, AND ALL TRADES AFFECTED SHALL SIGN OFF ON THE DESIGN PRIOR TO FABRICATION OR INSTALLATION.
- PROVIDE ALL REQUIRED DEVICES AND COMPONENTS, FOR INTER-LOCK WORKING WITH THE ALARM BELL OR CENTRAL STATION MONITORING, WHERE REQUIRED BY THE FIRE MARSHAL.
- THE DESIGN SHALL BE SUBMITTED TO AND APPROVED BY THE FIRE MARSHAL PRIOR TO FABRICATION OR INSTALLATION.
- THE DESIGN SHALL BE SUBMITTED TO AND APPROVED BY THE OWNERS INSURANCE COMPANY PRIOR TO FABRICATION OR INSTALLATION.
- THE SYSTEM SHALL BE DESIGNED FOR LIGHT HAZARD OCCUPANCY FOR RESIDENCE AREAS AND SHELL PORTION AND "ORDINARY HAZARD OCCUPANCY" FOR GARAGE AREAS.
- HEAD SPACING CRITERIA SHALL BE AS FOLLOWS:  
 LIGHT HAZARD AREAS:  
 DENSITY (SPMSQ/FT<sup>2</sup>) 0.10  
 OVER MOST REMOTE AREA: 100  
 MAXIMUM SQFT. PER HEAD: 225  
 MAX SPACING (FT) 15  
 ORDINARY HAZARD GROUP 1 AREAS:  
 DENSITY (SPMSQ/FT<sup>2</sup>) 0.15  
 OVER MOST REMOTE AREA: 100  
 MAXIMUM SQFT. PER HEAD: 150  
 MAX SPACING (FT) 15

**SPRINKLER LEGEND**

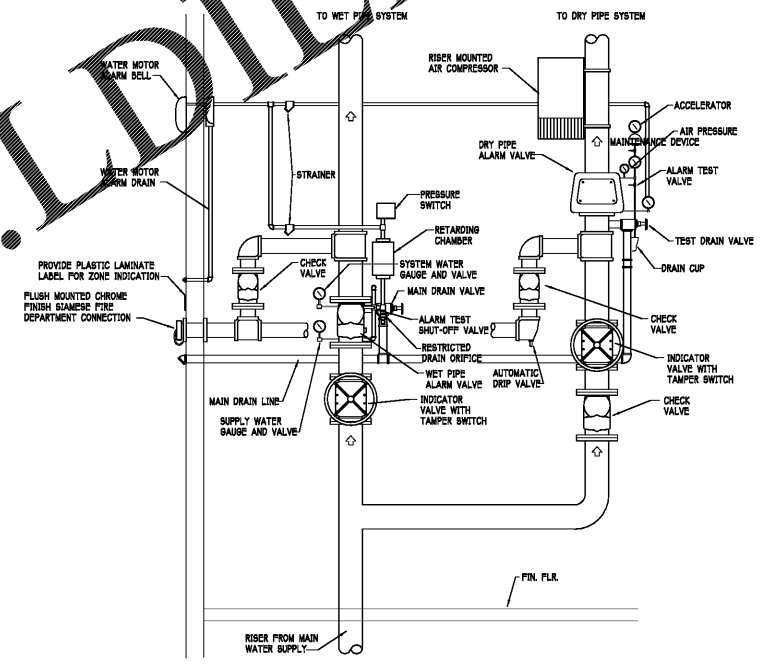
-  PENDANT MOUNTED SPRINKLER HEAD
-  CONCEALED PENDANT MOUNTED SPRINKLER HEAD
-  UPRIGHT MOUNTED SPRINKLER HEAD
-  DRY UPRIGHT SPRINKLER HEAD



1 TYPICAL SPRINKLER HEAD DETAIL  
FPI



2 UPRIGHT SPRINKLER HEAD DETAIL  
NOT TO SCALE  
FPI



3 SPRINKLER RISER ROOM WET AND DRY DETAIL  
NOT TO SCALE  
FPI

Order Plans @ WWW.LDILine.com

**in+EGRA**  
 an Intra Architecture, PLLC DBA  
 110 East Kingston Avenue, Ste. 20  
 Charlotte, NC 28203  
 704.372.0001  
 www.in+egra.com

THE DRAWING & WRITTEN MATERIAL HEREIN CONSTITUTE ORIGINAL WORK OF THE ARCHITECT. ALL RIGHTS ARE RESERVED. NO PART OF THIS DRAWING OR WRITTEN MATERIAL MAY BE REPRODUCED, COPIED, OR TRANSMITTED IN ANY FORM OR BY ANY MEANS, ELECTRONIC OR MECHANICAL, INCLUDING PHOTOCOPYING, RECORDING, OR BY ANY INFORMATION STORAGE AND RETRIEVAL SYSTEM, WITHOUT THE EXPRESS WRITTEN CONSENT OF THE ARCHITECT.  
 © 2020

**VP ENGINEERING**  
 VRETTOS PAPPAS  
 CONSULTING ENGINEERS, P.A.  
 PO Box 23847, Charlotte, NC 28223  
 2015 Clarkson Drive, Suite 180  
 Charlotte, NC 28207  
 704.372.7755  
 www.vpe.com  
 CORPORATE NC LICENSE #C-2409

Revisions		
Number	Date	Description

Project Title:  
**SOUTH CHARLOTTE HYUNDAI**

Project No: **4802.00**

Drawing Title:  
**SPRINKLER NOTES, LEGEND, & DETAILS**

SET ISSUE DATE  
 ▶ MAR 4, 2020 ◀

Sheet:  
**FPI**

**SPRINKLER DRAWING INDEX**

FPI	SPRINKLER NOTES, LEGEND & DETAILS
FP1	PARTIAL FIRST FLOOR SPRINKLER HEAD PLAN - SALES
FP2	PARTIAL FIRST FLOOR SPRINKLER HEAD PLAN - SERVICE