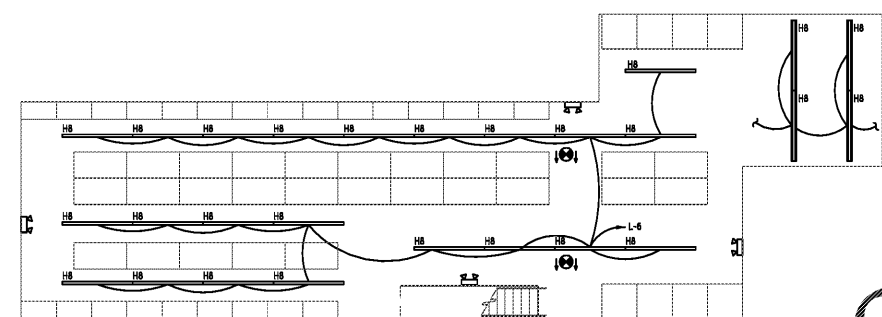




Seals:  
**VP ENGINEERING**  
Mechanical | Electrical | Plumbing  
VRETTOS PAPPAS  
CONSULTING ENGINEERS, P.A.  
PO Box 23847, Charlotte, NC 28273  
2015 Calkins Road, Suite 180  
Charlotte, NC 28272  
704.372.7352  
www.vps.com  
CORPORATE NC LICENSE #C-2409



2 MEZZANINE LIGHTING PLAN  
1/8"=1'-0"

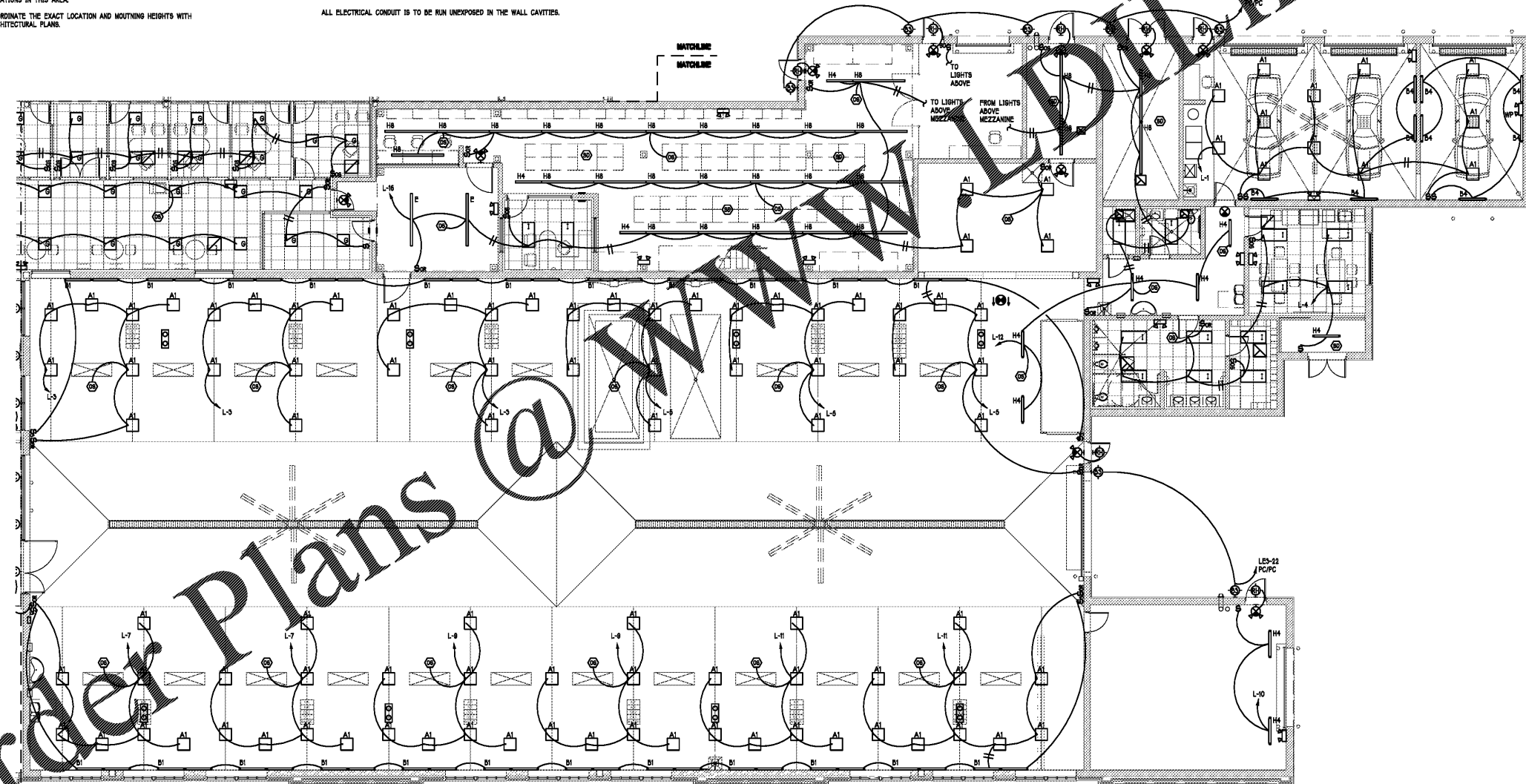
3 MEZZANINE PARTS RECEIVING-LIGHTING PLAN  
1/8"=1'-0"

- NOTES:
- E.G. SHALL MOUNT PENDANTS TO THE BOTTOM OF JOISTS USING UNISTRUT SUPPORTS TO SPAN BETWEEN THEM AS REQUIRED. REFER TO ARCHITECTURAL RCP FOR DIMENSIONS.
  - E.G. TO PROVIDE NECESSARY 1/2" RIGID CONDUIT TO EXTEND TO NOTES A.F.F. REFER TO ARCHITECTURAL ELEVATIONS FOR SPECIFIC LOCATIONS IN THIS AREA.
  - COORDINATE THE EXACT LOCATION AND MOUNTING HEIGHTS WITH ARCHITECTURAL PLANS.

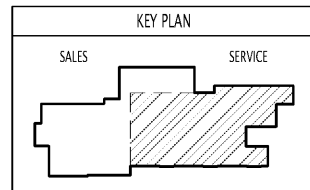
COORDINATE MOUNTING HEIGHTS OF ALL PENDANT FIXTURES WITH ARCHITECT AND OWNER BEFORE INSTALLATION.

LIGHTING FIXTURES ARE SUBJECT TO CHANGE. MORE SPECIFICATION WILL BE PROVIDED IN NEXT SET.

ALL ELECTRICAL CONDUIT IS TO BE RUN UNEXPOSED IN THE WALL CAVITIES.



4 PARTIAL FIRST FLOOR LIGHTING PLAN - SERVICE  
1/8"=1'-0"



Revisions:

Number	Date	Description
--------	------	-------------

Project Title:  
**SOUTH CHARLOTTE HYUNDAI**

Project No: **4802.00**  
Drawing Title:  
**PARTIAL FIRST FLOOR LIGHTING PLAN - SERVICE AND MEZZANINE LIGHTING PLAN**

SET ISSUE DATE  
MAR 4, 2020

Sheet:  
**E7**