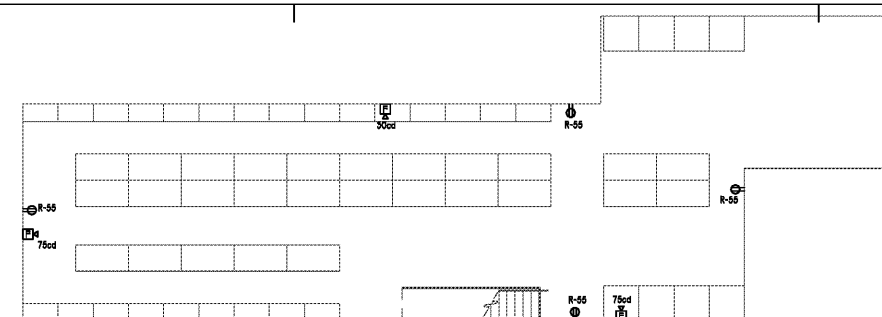


THE DRAWINGS & WRITTEN MATERIAL HEREIN CONSTITUTE ORIGINAL WORK OF THE ARCHITECT, & AS SUCH, ARE SUBJECT TO COPYRIGHT & MAY NOT BE REPRODUCED, TRANSMITTED, COPIED, REPRODUCED OR USED IN ANY WAY WITHOUT EXPRESS WRITTEN CONSENT OF THE ARCHITECT
© 2020 IN+EGRA

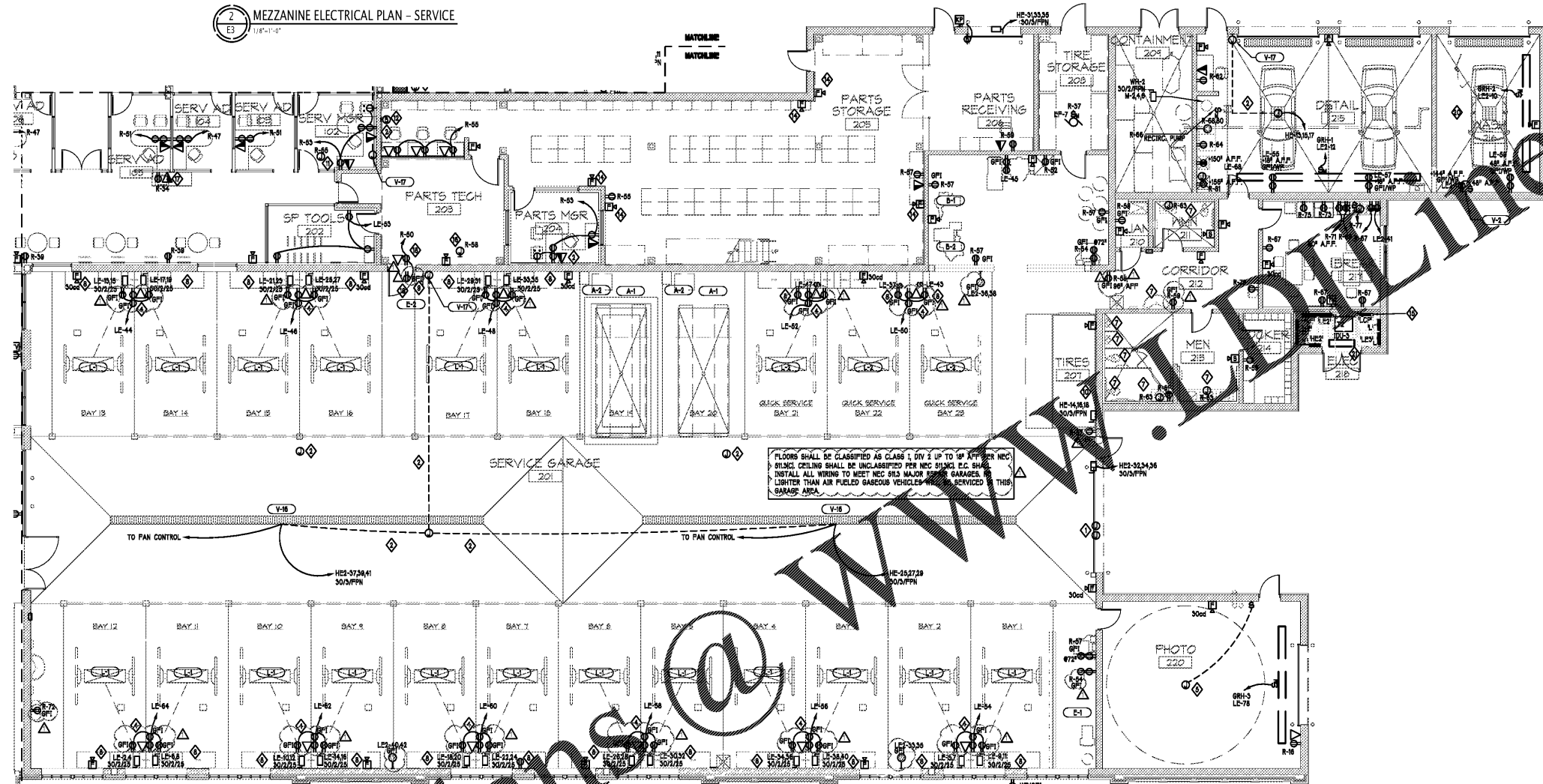


VP ENGINEERING
VP ENGINEERING, P.A.
10101 Southpark Drive, Suite 180
Charlotte, NC 28277
704.372.1785
www.vpe.com
CORPORATE NC LICENSE #C-2409



2 MEZZANINE ELECTRICAL PLAN - SERVICE
1/8"=1'-0"

NOTES:
1. REFER TO MECHANICAL SHEETS M2 AND M3 FOR AIR BALANCING SCHEDULE FOR ALL THE AREAS ADJACENT TO GARAGE.



1 PARTIAL FIRST FLOOR POWER PLAN - SERVICE
1/8"=1'-0"

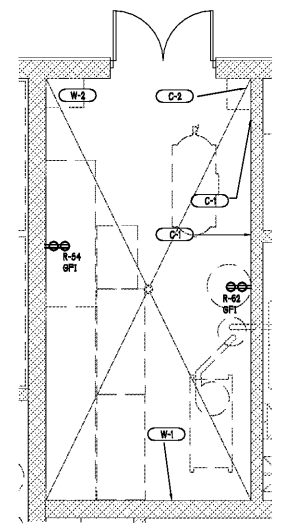
NOTES:

- E.C. TO FURNISH AND INSTALL ULTRATEC DISTRIBUTION PANEL ON BOTH SIDES OF PHOTO BOOTH.
- IF CONDUIT TO BE RUN, ALSO UNDERSIZE OF PHOTO BOOTH BY E.C.
- E.C. TO FURNISH AND INSTALL SIGNAL TECH TRIPLE GANG 16-3 SINGLE POLE/DOUBLE THROW SWITCHES.
- REFER TO DETAIL 9 ON SHEET 201 AND TO THE ARCHITECTURAL ELEVATION.
- E.C. TO PROVIDE J-BOX W/30 CHORD. E.C. TO WIRE PHOTO BOOTH LIGHTS TO 30 CHORD.
- INDOOR UNIT POWERED FROM OUTDOOR UNIT.
- E.C. SHALL USE CIRCUIT R-63 FOR TRANSFORMER FOR AUTOMATIC PAUCETS, SOAP DISPENSERS, URINAL AND TOILET FLUSH VALVES. COORDINATE EXACT LOCATIONS OF TRANSFORMERS WITH PLUMBING CONTRACTOR.
- LIFTS ARE IN-GROUND.
- LOCATIONS FOR IN-GROUND EXHAUST FAN STARTERS. COORDINATE EXACT REQUIREMENTS WITH EQUIPMENT VENDOR PRIOR TO INSTALLATION.
- DISCONNECT FOR CAROUSEL MOUNT TO BOTTOM OF STRUCTURE IN LOCATION SHOWN.
- VOLTAGE TRANSFORMER FOR DIFFUSER POWER. REFER TO MECHANICAL AND ARCHITECTURAL PLANS.
- ACTIVATION OF THE DOORBELL INDICATOR SHALL INITIATE AN AUDIBLE TONE AND VISUAL SIGNAL WITHIN THE BUILDING. SPECIFICATIONS SHALL MATCH ULTRATEC SIMPLICITY DOORBELL SIGNALER AND ADD-ON STROBE SERIES. E.C. TO COORDINATE THE EXACT LOCATION OF DOORBELL INDICATOR WITHIN THE BUILDING WITH OWNER.
- BAPS TO HAVE RELAY INTERACTION WITH FIRE ALARM PANEL.
- COORDINATE EXACT MOUNTING HEIGHT LOCATIONS OF FIRE ALARMS BELOW MEZZANINE WITH ARCHITECTURAL DRAWINGS.
- E.C. SHALL INSTALL A LUTRON RP949-077-FT CONTROL PANEL FOR AUTOMATIC SHUTOFF. ALL INTERIOR NORMAL CIRCUITS SHALL BE RUN THROUGH PANEL LCP. COORDINATE EXACT LOCATION OF MANUAL OVERRIDE WITH OWNER.
- CO MONITORING SYSTEM CONTROL. E.C. TO COORDINATE SENSOR J-BOX AND LV CONDUIT REQUIREMENTS.
- COORDINATE EXACT LOCATION IN MILLWORK WITH E.C. PRIOR TO INSTALLATION.

- POWER AND DATA TO BE MOUNTED ABOVE DOOR.
- POWER AND DATA TO BE MOUNTED AS HIGH AS POSSIBLE COORDINATE MAX HEIGHT WITH MEZZANINE ABOVE.
- ALL ELECTRICAL DEVICES IN WASH BAY SHALL BE NEMA-4R.
- INDOOR UNIT POWERED VIA OUTDOOR UNIT. PROVIDE WITH 30A/2PPN FUSED DISCONNECT.

FLOORS SHALL BE CLASSIFIED AS CLASS 1, DIV 2 UP TO 10' AFFRER NEC. SPRINKLING SHALL BE UNCLASSIFIED PER NEC 914.1.1.1. E.C. SHALL INSTALL ALL WIRING TO MEET NEC 914.1.1.1. MAJOR GARAGES SHALL BE LIMITED TO AIR FUELED GASEOUS VEHICLES SERVICED. THIS GARAGE AREA.

4 ENLARGED CONTAINMENT ROOM
1/8"=1'-0"



EQUIPMENT PROVIDED BY OWNER

Parts & Service Areas Power and other Requirements

| QTY. | DESCRIPTION | VOLTAGE | PHASE | AMPS | WATTAGE KW | CIRCUITING | EL. CONNECTION | DESCRIPTION |
|------|--------------------------|----------|-------|------|------------|---------------|----------------|--|
| A-1 | ALIGNMENT MACHINE | 115 | 1φ | 6 | 1.0 | LE2-3A/ES-8 | 30A/2PPN | DUPLEX OUTLET, ISOLATED GROUND. |
| A-2 | ALIGNMENT LIFT | 108-230 | 1φ | 28 | 8.0 | LE2-7A/ES-12A | 30A/2PPN | CONNECTIONS BY GC. DISCONNECTS PER LOCAL CODE. |
| B-1 | TIRE CHANGER | 220 | 1φ | 15 | 3.1 | LE2-2A | 30A/2PPN | CONNECTIONS BY GC. DISCONNECTS PER LOCAL CODE. |
| B-2 | WHEEL BALANCER | 220 | 1φ | 10 | 2.3 | LE2-7A | 30A/2PPN | 25A FLUR NEMA LE-20P. |
| C-1 | AIR COMPRESSOR (42) | 480 (20) | 3φ | 21 | 11.2 (30) | HE-2A/A/10/15 | 30A/2PPN | CONNECTIONS BY GC. DISCONNECTS PER LOCAL CODE. INCLUDES MAG STARTERS MOUNTED AND PREWIRED TO MOTORS. |
| C-2 | AIR DRYER | 120 | 1φ | 11 | 0.8 | LE-6A | 30A/2PPN | QUAD OUTLET. |
| E-1 | EXHAUST BLOWER - 8HP | 480 | 3φ | 6.8 | 0.7 | HE-8Q/22A | 30A/2PPN | CONNECTION BY GC. DISCONNECTS PER LOCAL CODE. INCLUDES MAG STARTERS MOUNTED AND PREWIRED TO MOTORS. |
| E-2 | EXHAUST SWITCH | 480 | 3φ | | | | 30A/2PPN | CONNECTION BY GC. DISCONNECTS PER LOCAL CODE. |
| L-1 | LIFT POWER UNIT | 208-230 | 1φ | 17 | 1.4 | SEE PLANS | 30A/2PPN | CONNECTIONS BY GC. DISCONNECTS PER LOCAL CODE. |
| L-2 | LIFT POWER UNIT | 115 | 1φ | 5 | 1.0 | SEE PLANS | 30A/2PPN | CONNECTIONS BY GC. DISCONNECTS PER LOCAL CODE. |
| V-2 | HIGH VELOCITY FAN | 480 | 3φ | 20 | 3.4 | LE-4 | 30A/2PPN | 12-0" A.F.P. / 120-0" OFF SWITCH # 44P A.F.P. |
| V-16 | MACRO AIR FAN | 480 | 3φ | 5 | 4.0 | SEE PLANS | 30A/2PPN | FUSED DISCONNECT BY GC. |
| V-17 | MACRO AIR FAN CONTROLLER | | | | | | 30A/2PPN | 1" CONDUIT TO CEILING. JUNCTION BOX AT 60" AFF. |
| W-1 | 10 HP EUROVAC SYSTEM | 480 | 3φ | 15 | 10.8 | HE-13.5 | 30A/2PPN | CONNECTIONS BY GC. DISCONNECTS PER LOCAL CODE. |
| W-2 | PRESSURE WASHER | 208 | 3φ | 18 | 6.5 | LE2-2A.6 | 30A/2PPN | CONNECTIONS BY GC. DISCONNECTS PER LOCAL CODE. PLUS COLD WATER HOSE BIB. |

SPECIAL INSTRUCTIONS TO E.C.
E.C. TO PROVIDE ALL ELECTRICAL TO LOCATIONS SPECIFIED BY VENDOR. E.C. TO INSTALL ALL LOW VOLTAGE WIRING. E.C. TO COORDINATE WITH VENDOR PRIOR TO CONSTRUCTION. E.C. TO VERIFY ALL ELECTRICAL LOCATIONS WITH OWNER PRIOR TO INSTALLATION.

ALL CONDUIT, CABLES AND OTHER SYSTEMS RUN ACROSS AREAS WITH EXPOSED CEILING SHALL BE GROUPED NEATLY ON THE UNDERSIDE OF THE JOISTS. E.C. IS RESPONSIBLE FOR COORDINATION OF THIS AND THE OWNER PROVIDED EQUIPMENT.

ALL CONDUIT TO BE RECESSED IN CMU WALLS. STUB OUT LOCATIONS MUST BE COORDINATED WITH THE BOTTOM CHORD OF BAR JOIST ELEVATIONS.

| Number | Date | Description |
|--------|------------|-----------------|
| 1 | 03/11/2020 | PERMIT COMMENTS |

Project Title:
SOUTH CHARLOTTE HYUNDAI

Project No.: **4802.00**
Drawing Title:
PARTIAL FIRST FLOOR POWER PLAN - SERVICE AND MEZZANINE ELECTRICAL PLANS

SET ISSUE DATE
MAR 4, 2020

Sheet:
E3

Order Plans @ www.in+egra.com

