

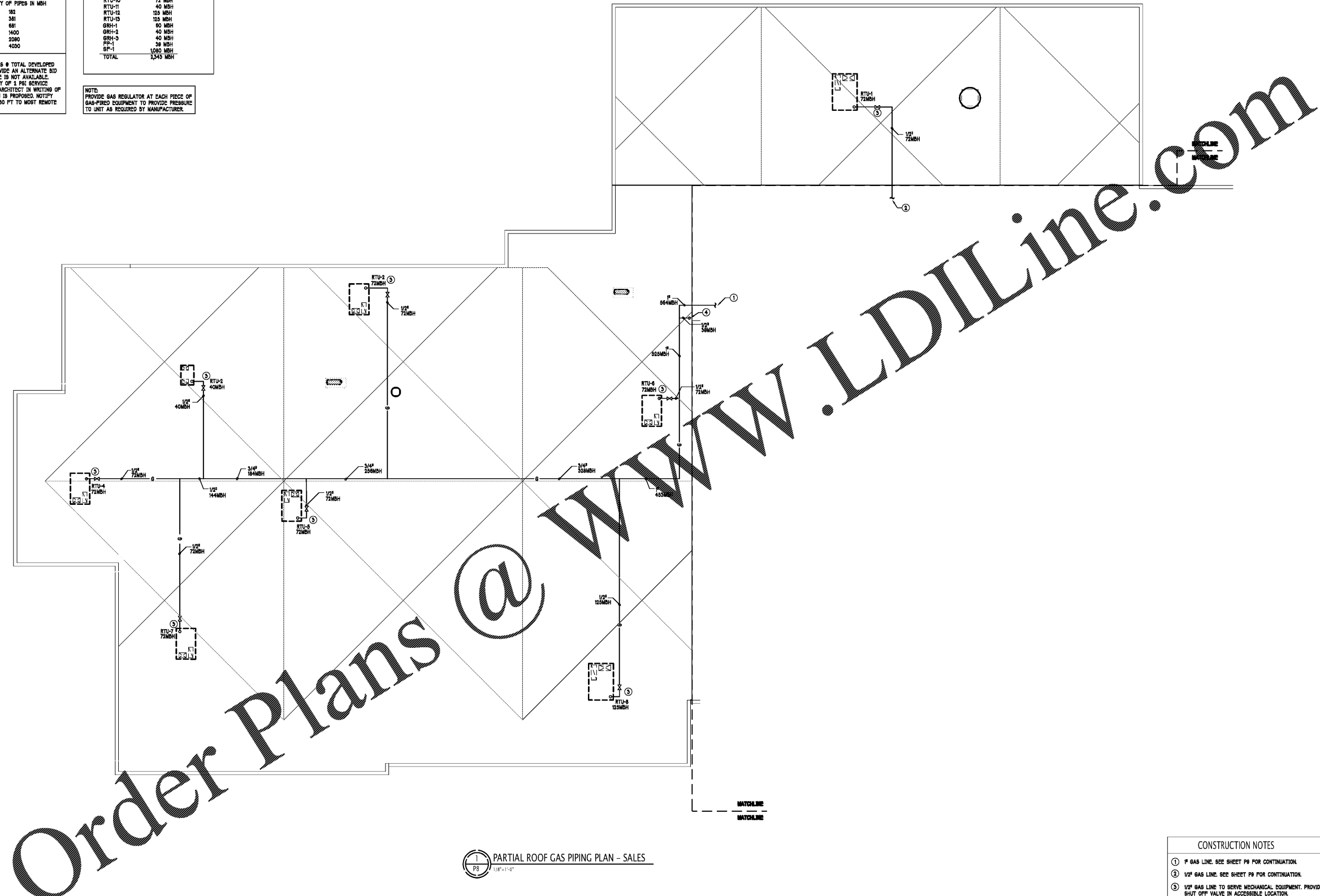
Sheet Template ID: CPE-F-07-B
 File: Z:\Projects\4802_South Charlotte Hyundai\4802P09 PARTIAL ROOF GAS PIPING PLAN SALES; Plot: 3/1/2020 4:29 PM by ALEX E. LEVEN; Saved: 3/1/2020 4:24 PM by DPAYNE

GAS LOAD TABLE LINE	
LOW PRESSURE	HIGH PRESSURE
PRESSURE DROP: 0.5 IN.W.C.	ATMOS. PRESSURE: 14.6964 PSIA
STEEL SCHED. 40E	P2: 2 PSIG
LENGTH: 447 FT	STEEL SCHED. 40E
FITTINGS FACTOR: 1.3	LENGTH: 447 FT
EQUIVALENT TOTAL LENGTH: 596 FT	FITTINGS FACTOR: 1.3
TOTAL TABLE LENGTH 550 FT	EQUIVALENT TOTAL LENGTH: 596 FT
CAPACITY OF PIPES IN MBH	TOTAL TABLE LENGTH 550 FT
1/2" 20	CAPACITY OF PIPES IN MBH
3/4" 41	1/2" 382
1" 78	3/4" 381
1-1/4" 158	1" 681
1-1/2" 238	1-1/4" 1400
2" 408	1-1/2" 2090
2-1/2" 732	2" 4000
3" 1280	

COMBINED GAS LOAD SUMMARY	
RTU-1	125 MBH
RTU-2	40 MBH
RTU-3	72 MBH
RTU-4	72 MBH
RTU-5	72 MBH
RTU-6	72 MBH
RTU-7	72 MBH
RTU-8	125 MBH
RTU-9	72 MBH
RTU-10	72 MBH
RTU-11	40 MBH
RTU-12	125 MBH
RTU-13	125 MBH
GRH-1	80 MBH
GRH-2	40 MBH
GRH-3	40 MBH
FR-1	38 MBH
SF-1	1000 MBH
TOTAL	2,543 MBH

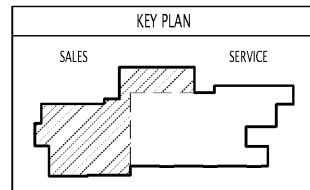
NOTE:
 GAS PIPING IS SIZED FOR 1 PSI NATURAL GAS @ TOTAL DEVELOPED LENGTH OF 550 FT. CONTRACTOR SHALL PROVIDE AN ALTERNATE BID FOR LOW PRESSURE PIPING IF HIGH PRESSURE IS NOT AVAILABLE. CONTRACTOR SHALL VERIFY THE AVAILABILITY OF 1 PSI SERVICE BEFORE ANY WORK HAS BEGUN AND NOTIFY ARCHITECT IN WRITING OF AVAILABLE SERVICE. METER LOCATION SHOWN IS PROPOSED. NOTIFY ENGINEER IF DEVELOPED LENGTH EXCEEDS 550 FT TO MOST REMOTE FITTURE.

NOTE:
 PROVIDE GAS REGULATOR AT EACH PIECE OF GAS-FIRED EQUIPMENT TO PROVIDE PRESSURE TO UNIT AS REQUIRED BY MANUFACTURER.



1 PARTIAL ROOF GAS PIPING PLAN - SALES
 1/8" = 1'-0"

- CONSTRUCTION NOTES**
- 1" GAS LINE. SEE SHEET P8 FOR CONTINUATION.
 - 1/2" GAS LINE. SEE SHEET P8 FOR CONTINUATION.
 - 1/2" GAS LINE TO SERVE MECHANICAL EQUIPMENT. PROVIDE SHUT OFF VALVE IN ACCESSIBLE LOCATION.
 - 1/2" GAS LINE TO BE ROUTED DOWN COLUMN TO FLOOR BELOW TO SERVE GAS FIREPLACE.



in+EGRA
 an Intra Architecture, PLLC DBA
 110 East Kingston Avenue, Ste. 20
 Charlotte, NC 28203
 704.372.0001
 www.intra.com

THE DRAWINGS & WRITTEN MATERIAL HEREIN CONSTITUTE ORIGINAL WORK OF THE ARCHITECT & AS INTELLECTUAL PROPERTY & INSTRUMENTS OF SERVICE ARE SUBJECT TO COPYRIGHT & MAY NOT BE REPRODUCED, TRANSMITTED, EITHER ELECTRONICALLY OR USED IN ANY WAY WITHOUT EXPRESS WRITTEN CONSENT OF THE ARCHITECT
 © 2020 INTRA

Seals:

VP ENGINEERING
 Mechanical Electrical Plumbing
 VRETTOS PAPPAS
 CONSULTING ENGINEERS, P.A.
 PO Box 23847, Charlotte, NC 28221
 2015 Coliseum Drive, Suite 180
 Charlotte, NC 28202
 704.372.1785
 www.vps.com
 CORPORATE NC LICENSE #C-2409

Revisions	Number	Date	Description

Project Title:
SOUTH CHARLOTTE HYUNDAI

Project No: **4802.00**

Drawing Title:
PARTIAL ROOF GAS PIPING PLAN - SALES

SET ISSUE DATE
 MAR 4, 2020

Sheet:
P8