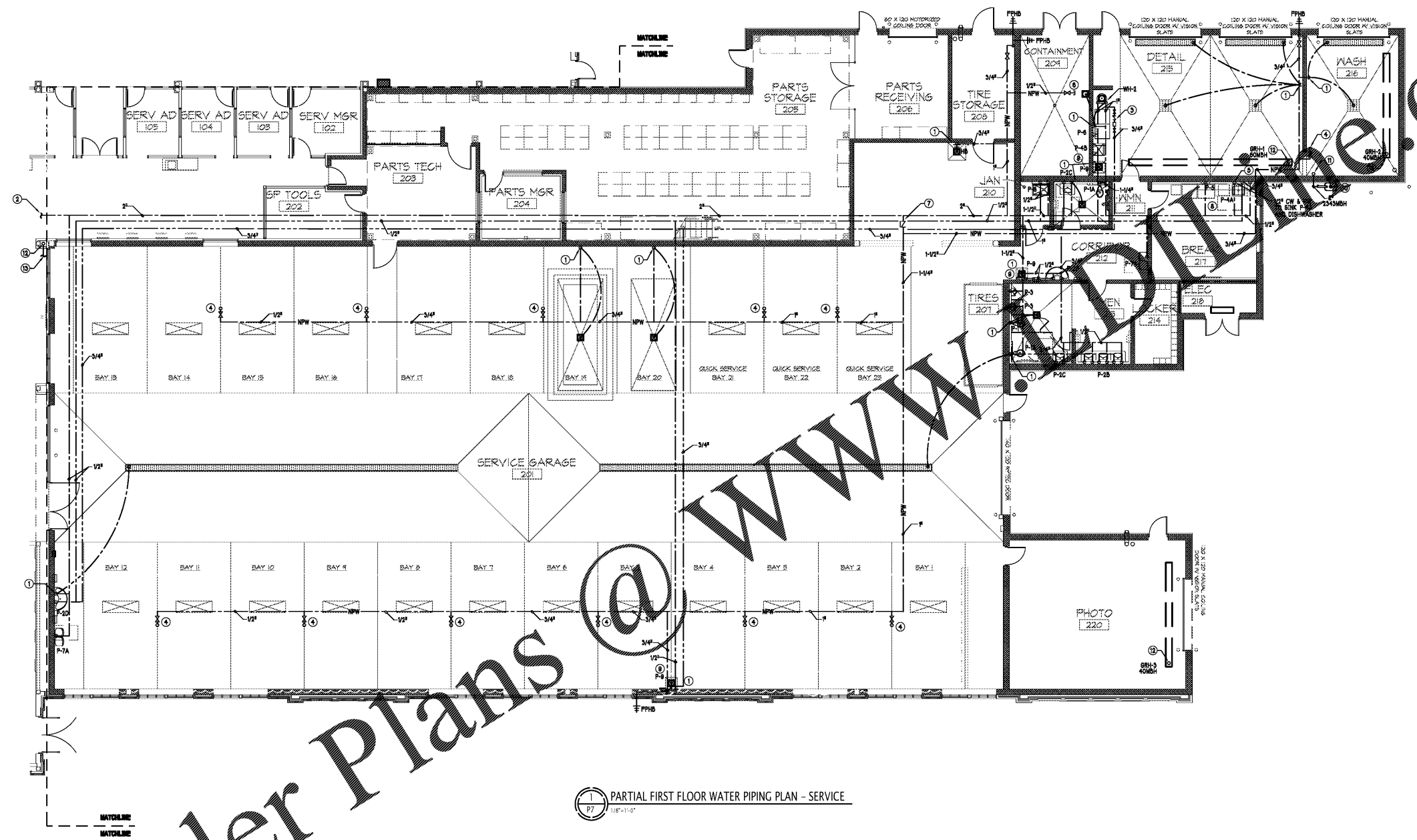


Sheet Template ID: CHE-F-07-B  
 File: Z:\Projects\4802\_South Charlotte Hyundai Redesign\4802P7 PARTIAL FIRST FLOOR WATER PIPING PLAN SERVICE; Plotfile: 3/1/2020 4:29 PM by ALEX E. LEVEN; Saved: 3/1/2020 4:12 PM by DPAYNE



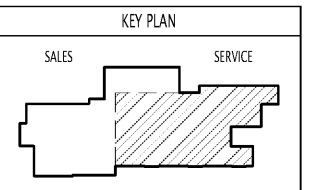
Seals:  
  
**VP ENGINEERING**  
 Mechanical Electrical Plumbing  
 VRETTOS PAPPAS  
 CONSULTING ENGINEERS, P.A.  
 PO Box 23847, Charlotte, NC 28221  
 2015 Coliseum Road, Suite 180  
 Charlotte, NC 28202  
 704.372.3785  
 www.vps.com  
 CORPORATE NC LICENSE #C-2409



PARTIAL FIRST FLOOR WATER PIPING PLAN - SERVICE  
 1/8"=1'-0"

- GENERAL NOTES:**
1. ALL PIPING AND OTHER SYSTEMS RUN IN OR ACROSS AREAS WITH EXPOSED CEILING SHALL BE GROUPED NEAT TOGETHER ON OR NEAR THE UNDERSIDE OF THE JOINTS, GC IS RESPONSIBLE FOR COORDINATION OF THIS AND THE OWNER PROVIDED EQUIPMENT.
  2. RUN PLUMBING IN CHASE WALLS WHERE PROVIDED, REFER TO ARCHITECTURAL PLANS.
  3. PROVIDE GAS REGULATOR AT EACH PIECE OF GAS-FIRED EQUIPMENT TO PROVIDE PRESSURE TO UNIT AS REQUIRED BY MANUFACTURER.

- CONSTRUCTION NOTES**
- ① 1/2" CW UNDERGROUND TO TRAP PRIMER, P.C. TO VERIFY EXACT LOCATION PRIOR PERFORMING ANY WORK.
  - ② 2" CW LINE, SEE SHEET P6 FOR CONTINUATION.
  - ③ HOT WATER RECIRCULATION PUMP - SEE DETAIL 10/PM FOR ADDITIONAL INFORMATION.
  - ④ 1/2" CW LINE TO OVERHEAD REEL, TERMINATE W/ 1/2" BALL VALVE WITHIN 12" OF REEL.
  - ⑤ 1/2" CW LINE TO SERVE COFFEE MAKER, PROVIDE WITH BOX VALVE, P.C. TO VERIFY EXACT LOCATION PRIOR TO PERFORMING ANY WORK.
  - ⑥ 1/2" CW LINE TO PRESSURE WASHER, P.C. TO VERIFY EXACT LOCATION PRIOR PERFORMING ANY WORK.
  - ⑦ RPZ BACKFLOW PREVENTER EQUAL TO ZURN MODEL 878XLSU SHALL COMPLY WITH NPCC 608.13.2.
  - ⑧ REFER TO ARCHITECTURAL ELEVATIONS FOR EXACT LOCATIONS OF WATER BOXES IN THIS AREA.
  - ⑨ 1/2" HW & CW LINES TO EYEWASH STATION, PROVIDE WITH MIXING VALVE, BRADLEY 819-2000 AND OUTLET TEMPERATURE THAT MEETS ANSI Z358A.
  - ⑩ NEW GAS METER, REGULATOR AND UNDERGROUND SERVICE BY LOCAL GAS COMPANY, 3/4" BSH AT SPREAD DELIVERY, PRESSURE, 850' EQUIVALENT TOTAL LENGTH TO MOST REMOTE FUTURE.
  - ⑪ 2" GAS LINE TO ROOF, SEE P8 FOR CONTINUATION.
  - ⑫ 1/2" GAS LINE DOWN FROM ROOF, SEE P8 FOR CONTINUATION.
  - ⑬ 1/2" GAS LINE, SEE SHEET P8 FOR CONTINUATION.



Revisions:

Number	Date	Description

Project Title:

**SOUTH CHARLOTTE HYUNDAI**

Project No: **4802.00**

Drawing Title:

**PARTIAL FIRST FLOOR WATER PIPING PLAN - SERVICE**

SET ISSUE DATE

▶ MAR 4, 2020 ◀

Sheet:

**P7**

Order Plans @ [www.wdw.com](http://www.wdw.com)