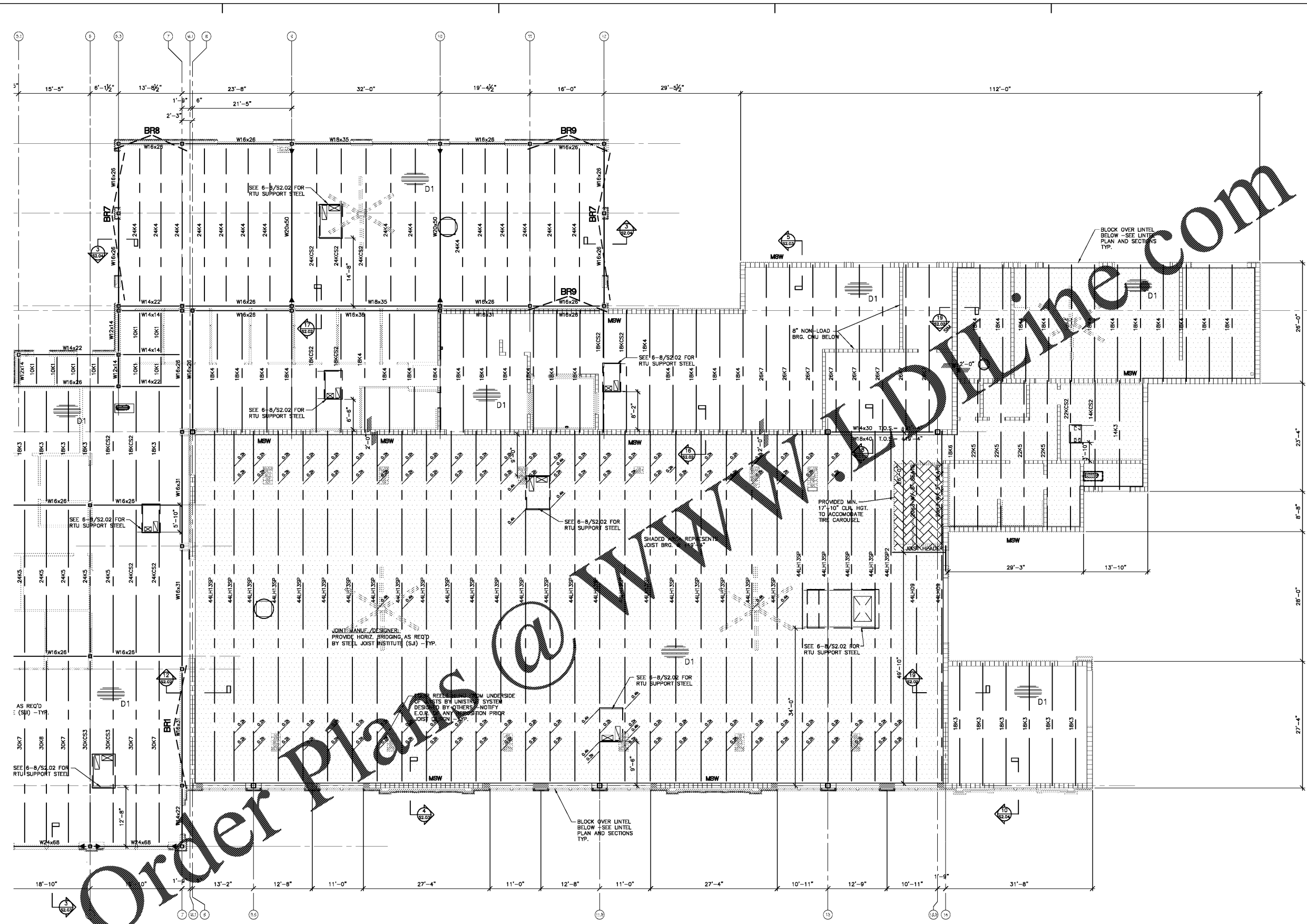


Sheet Template ID: ORE-F-07-B
 File: X:\Smiley_Engineering\Smiley_Engr_2019\1940 - Integra 2019 Hyundai Redesign of 2017 Plans\Struct\Plans-Hyundai\Phinville; Politec: 3/1/2020 4:50 PM by CONOR; Saved: 3/1/2020 4:12 PM by CONOR



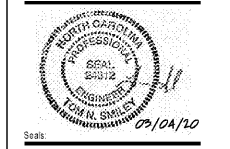
1 PARTIAL ROOF FRAMING PLAN
 S1.06 1/8" = 1'-0"

- NOTES:
1. ALL ELEVATIONS REFERENCED FROM FIN. FL. ELEV. 604.50' (0-0).
 2. TOP OF STEEL - T.O.S. FOR JOIST BRG. = +21'-4" (U.O.A.)
 3. CONTRACT DRAWINGS SHALL NOT BE USED FOR SHOP DRAWINGS.
 4. SEE SHEET S3.02 FOR GENERAL NOTES.
 5. ALL BEAMS SHALL BE GRADE A992.
 6. COORDINATE ALL ROOF OPENINGS WITH ARCHITECTURAL AND MECHANICAL DRAWINGS.
 7. -SEE OPENING DETAIL ON 6/S2.02
 8. SEE SHEET S3.01 FOR BRACED FRAME ELEVATIONS & DETAILS.
 9. SEE UPLIFT DIAGRAM FOR JOIST DESIGN UPLIFT FORCES
 10. TYP. EXTERIOR WINDOW OPENINGS SHALL HAVE BRICK SUPPORTED BY 6x6x3/4 (LLV) LOOSE STEEL W/8" BEARING ON EA. SIDE. SHOP PRIME AND ONE FIELD COAT SEE SECTION 09 5000 PAINTING SPECIFICATION

D1
 1/2", 20 GA., TYPE "B" PAINTED METAL DECK
 - FASTEN TO ALL SUPPORTS W/ 3/8" PURLIN WELDS IN 3/8" PATTERN - FASTEN SIDE LAPS W/ (7) #10 SCREWS BETWEEN SUPPORTS

-D).
 GS.
 MECHANICAL DRAWINGS.
 TYPED BY 6x6x3/4 (LLV)
 ONE FIELD COAT SEE

THE DRAWINGS & WRITTEN MATERIAL HEREIN
 CONSTITUTE ORIGINAL WORK OF THE ARCHITECT &
 AS INTELLECTUAL PROPERTY & INSTRUMENTS OF
 SERVICE ARE SUBJECT TO COPYRIGHT & MAY NOT BE
 REPRODUCED, PUBLISHED, DISTRIBUTED, REPRODUCED
 OR USED IN ANY MANNER WITHOUT EXPRESS WRITTEN
 CONSENT OF THE ARCHITECT
 3/20/2020



Seals

Revisions:

Number	Date	Description

Project Title:
HYUNDAI SOUTH CHARLOTTE

10518 CADILLAC STREET
 PINEVILLE, NC 28134

Project No. 2538.00
 Drawing Title:

PARTIAL ROOF FRAMING PLAN

SET ISSUE DATE
 MARCH 4, 2020
 100% CD

Sheet
S1.06