

File: X:\Smiley_Engineering\Smiley_Eng_2019\1440 - Integra 2019 Hyundai Redesign of 2017 Plans\Struct\Plans-Hyundai\Pinville; Plotted: 3/4/2020 4:50 PM by CONOR; Saved: 3/4/2020 4:12 PM by CONOR
 Sheet Template ID: ORE-F-07-B

INTEGRA
 an Integra Architecture, PLLC DBA
 116 East Kingston Avenue, Ste. 20
 Charlotte, NC 28203
 704.372.0001
 www.integra.com

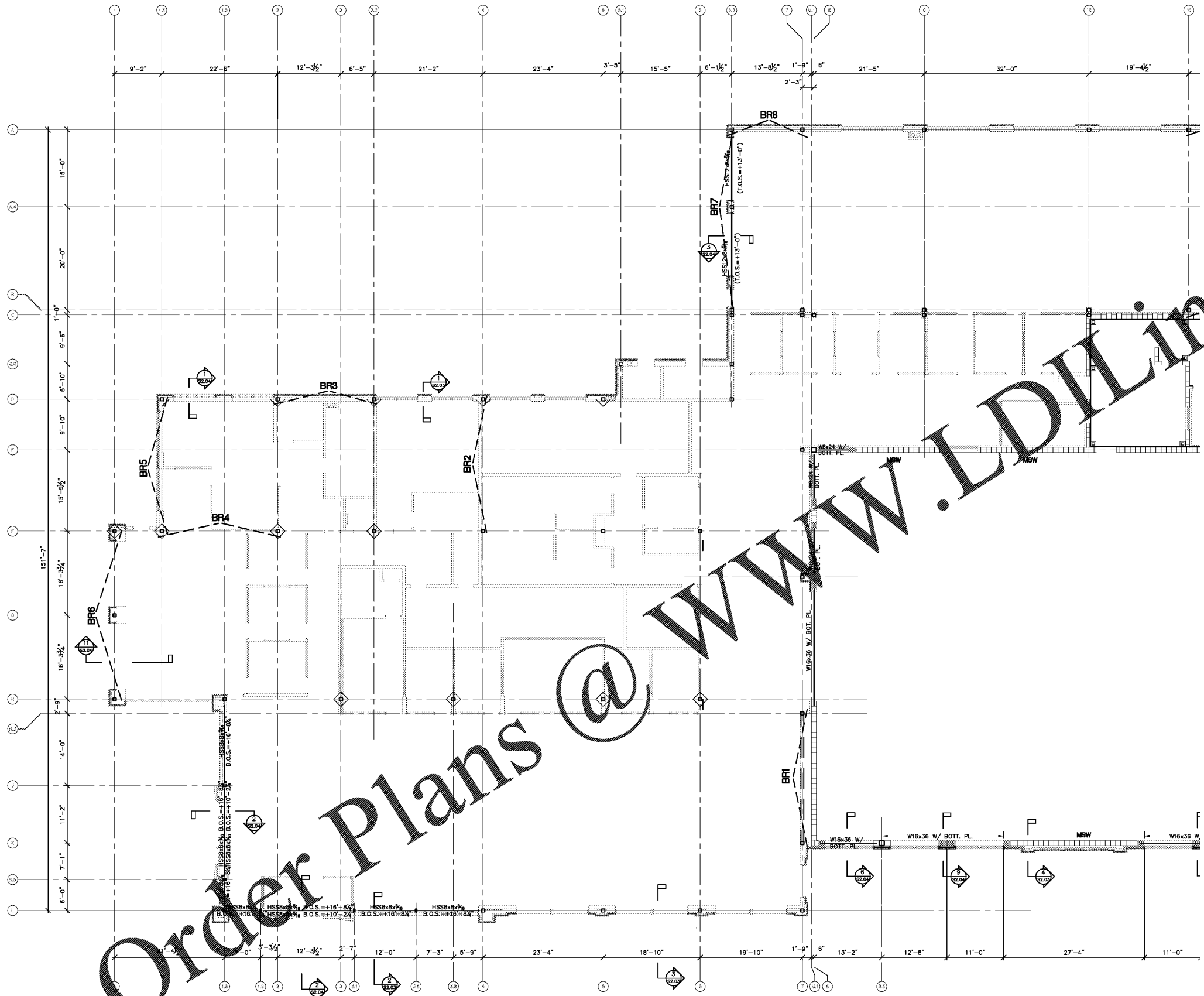
THE DRAWINGS & WRITTEN MATERIAL HEREIN
 CONSTITUTE ORIGINAL WORK OF THE ARCHITECT &
 AS INTELLECTUAL PROPERTY & INSTRUMENTS OF
 SERVICE ARE SUBJECT TO COPYRIGHT & MAY NOT BE
 REPRODUCED, PUBLISHED, DISTRIBUTED, REPRODUCED
 OR USED IN ANY MANNER WITHOUT EXPRESS WRITTEN
 CONSENT OF THE ARCHITECT
 3/20/2020

SMILEY
 ENGINEERING, INC.

NC License No. C-3128
 1171 Market Street, Suite 203
 Fort Mill, SC 29708
 704-408-1698

PROFESSIONAL
 SEAL
 20192
 ENGINEERING
 TERRY N. SMILEY
 03/04/20

Scale:



Order Plans @ WWW.LDILine.com

1 PARTIAL LINTEL LEVEL PLAN
 1/8" = 1'-0"

- NOTES:
1. ALL ELEVATIONS REFERENCED FROM FIN. FL. ELEV. 604.50' (0-0).
 2. TOP OF STEEL - T.O.S. FOR BEAMS AS SHOWN ON PLAN & SECTIONS (U.G.N.).
 3. CONTRACT DRAWINGS SHALL NOT BE USED FOR SHOP DRAWINGS.
 4. SEE SHEET S3.02 FOR GENERAL NOTES.
 5. ALL BEAMS SHALL BE GRADE A992.
 6. SEE SHEET S3.01 FOR BRACED FRAME ELEVATIONS & DETAILS.
 7. TYP. EXTERIOR WINDOW OPENINGS W/O BEAM NOMENCLATURE SHALL HAVE BRICK SUPPORTED BY 2#4x#6 (LLV) LOOSE STEEL W/ 6" MIN. BEARING ON EA. SIDE. SHOP PRIME AND ONE FIELD COAT SEE SECTION 09 9000 PAINTING SPECIFICATION

#5 AT 32" MAX. IN 8" CMU WALLS
 #6 AT 32" MAX. IN 12" CMU WALLS
 -TYP. ALL INTERIOR AND EXTERIOR
 UNLESS LABELED "MSW-X" -SEE
 MASONRY SHEAR WALL REINF. REQUIREMENTS
 WALLS U.N.O. -SEE SECTIONS -PROVIDE
 W1.7 (50#) HORIZ. WALL TIES AT 16"
 MAX. ALL MASONRY WALLS - TYP. U.N.O.

MASONRY LINTEL SCHEDULE	
ML1	8"x16" REINF. W/ 1 #5 T&B -SEE DETAILS 20-22/S2.01
ML2	12"x16" REINF. W/ 2 #5 T&B -SEE DETAILS 20-22/S2.01

Revisions:		
Number	Date	Description

Project Title:
HYUNDAI SOUTH CHARLOTTE

10518 CADILLAC STREET
 PINEVILLE, NC 28134

Project No. 2538.00

Drawing Title:
PARTIAL LINTEL PLAN

SET ISSUE DATE
 MARCH 4, 2020
 100% CD

Sheet:
S1.03