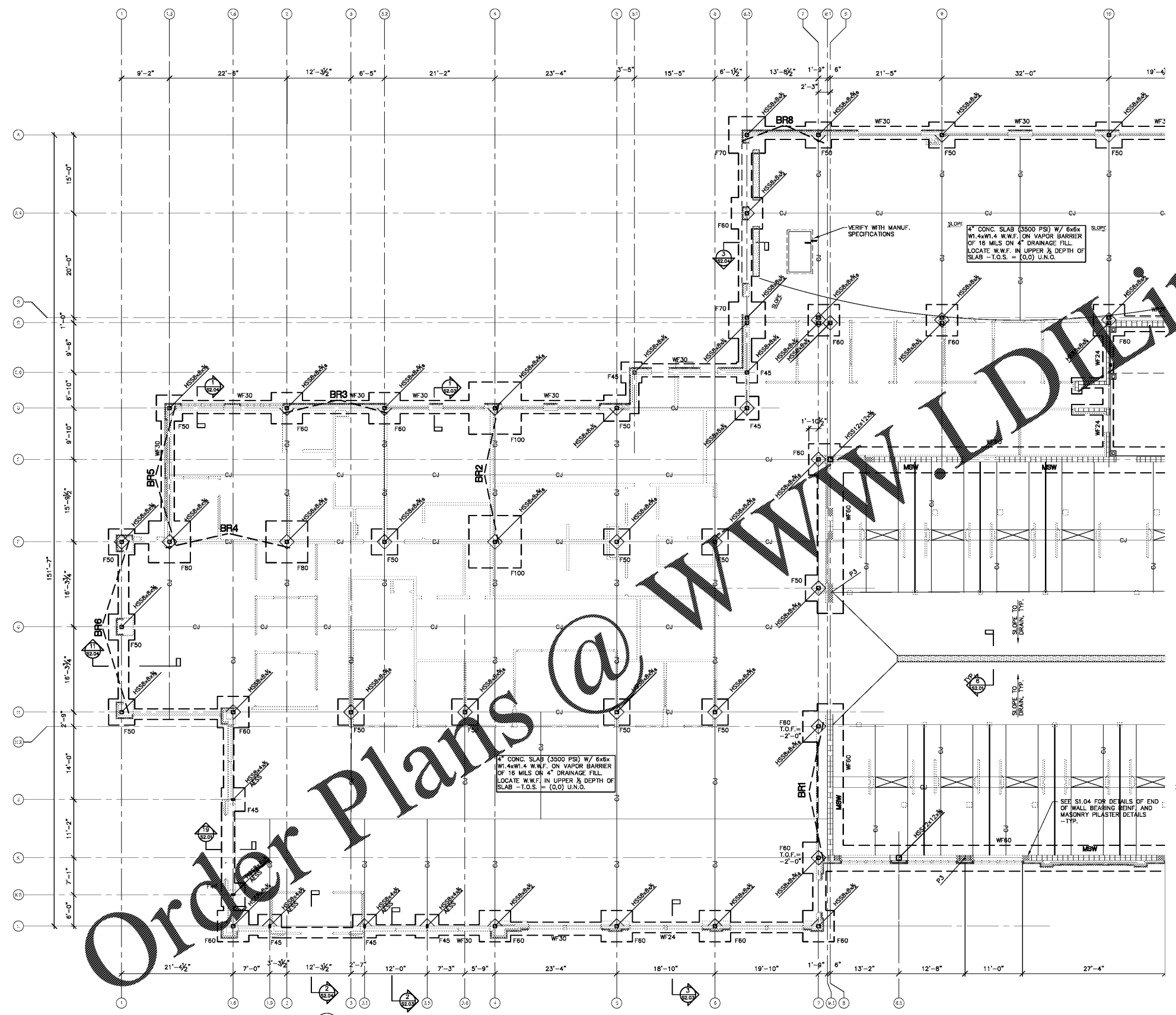


File: X:\Smiley_Engineering\Smiley_Engr_2019\1940 - Integra_2019\Hyundai Redesign of 2017 Plans\Struct Plans-Hyundai_Planville; Plotted: 3/1/2020 4:50 PM by CONOR; Saved: 3/1/2020 4:12 PM by CONOR
 Sheet Template ID: OPE-F-07-B



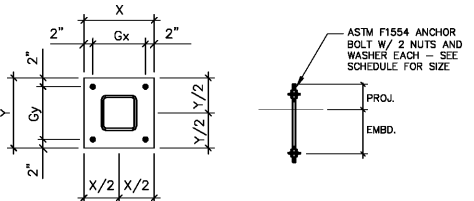
1 PARTIAL FOUNDATION + FLOOR SLAB PLAN
1/8" = 1'-0"

- NOTES:
1. TOP OF FOOTING - T.O.F. () REFERENCED FROM FIN. FL. ELEV. 604.50' (0-0)
 2. TOP OF INTERIOR FOOTINGS (-1'-0") TYPICAL UNLESS NOTED OTHERWISE.
 3. TOP OF EXTERIOR FOOTINGS (-1'-4") TYPICAL UNLESS NOTED OTHERWISE.
 4. CONTRACT DRAWINGS SHALL NOT BE USED FOR SHOP DRAWINGS.
 5. SEE THIS SHEET FOR FOOTING SCHEDULE.
 6. SEE SHEET S3.01 FOR BRACED FRAME ELEVATION & DETAILS.
 7. SEE SHEET S3.02 FOR GENERAL NOTES.
 8. SEE SHEET S1.04 FOR MASONRY PLASTER DETAILS P1-P4.

FOOTING SCHEDULE (2500 PSF)

MARK	SIZE	THICK.	REINFORCING
WF24	24" WIDE	1'-2"	2 #5 CONT. BOTTOM
WF28	28" WIDE	1'-2"	3 #5 CONT. BOTTOM
WF36	36" WIDE	1'-4"	3 #5 CONT. TOP & BOTTOM
			#4 #18" O.C. TRANSVERSE T&B
WF48	48" WIDE	1'-4"	4 #5 CONT. TOP & BOTTOM
			#4 #18" O.C. TRANSVERSE T&B
WF60	60" WIDE	1'-6"	5 #5 CONT. TOP & BOTTOM
			#4 #18" O.C. TRANSVERSE T&B
F45	4'-6" x 4'-6"	1'-2"	4 #5 x 4'-0" EACH WAY BOTTOM
F50	5'-0" x 5'-0"	1'-4"	5 #5 x 4'-6" EACH WAY TOP & BOTTOM
F60	6'-0" x 6'-0"	1'-6"	7 #5 x 5'-6" EACH WAY TOP & BOTTOM
F70	7'-0" x 7'-0"	1'-8"	7 #6 x 6'-6" EACH WAY TOP & BOTTOM
F80	8'-0" x 8'-0"	1'-10"	7 #7 x 7'-6" EACH WAY TOP & BOTTOM

SOILS LABORATORY SHALL VERIFY BEARING PRESSURE AT BOTTOM OF EACH FOOTING PRIOR TO PLACING CONCRETE. STRUCTURAL FILL SUPPORTING SLAB OR FOOTINGS SHALL BE PLACED IN MAXIMUM 8" LIFTS, WITH EACH 8" LIFT TESTED BY LABORATORY FOR COMPACTION LISTED IN GENERAL NOTES. FOOTING DESIGN BASED ON CAPACITY SHOWN ABOVE FROM RESULTS OF GEOTECHNICAL REPORT BY GEOTECHNOLOGIES, INC. PROJECT NO.: 1-16-0087-EA DATED FEBRUARY 18, 2016



COLUMN	BASE PLATE				ANCHOR BOLT			
	THICK.	X	Y	Gx	Gy	DIA.	PROJ.	EMBD.
HSS5x5	3/4"	12"	12"	8"	8"	3/4"	6"	8"
HSS8x8x1/4	1"	15"	15"	11"	11"	3/4"	6"	8"
HSS8x8x1/2	1 1/4"	17"	17"	13"	13"	1"	6"	12"
HSS12x12	1 1/2"	19"	19"	15"	15"	1"	6"	12"
HSS8x4	3/4"	15"	11"	11"	7"	3/4"	6"	8"

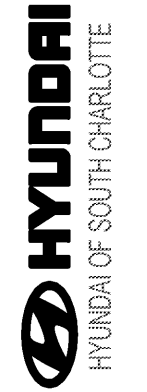
SEE DETAILS ON S3.01 FOR BASE PLATE REQUIREMENTS FOR BRACED FRAME COLUMNS PROVIDE 1" DIA. ANCHOR BOLTS W/ LENGTH AND PLATE WASHERS PER S3.01 FOR BRACED FRAME COLS. INCLUDING MOMENT FRAMES

COLUMN BASE PLATE AND ANCHOR BOLT SCHEDULE

THE DRAWINGS & WRITTEN MATERIAL HEREIN CONSTITUTE ORIGINAL WORK OF THE ARCHITECT & AS INTELLECTUAL PROPERTY & INSTRUMENTS OF SERVICE ARE SUBJECT TO COPYRIGHT & MAY NOT BE REPRODUCED, PUBLISHED, DISTRIBUTED, REPRODUCED OR USED IN ANY WAY WITHOUT EXPRESS WRITTEN CONSENT OF THE ARCHITECT
1/20/2020



Scale:



Revisions:

Number	Date	Description

Project Title:
HYUNDAI SOUTH CHARLOTTE

10519 CADILLAC STREET
PINEVILLE, NC 28134

Project No.: 2538.00

Drawing Title:
PARTIAL FOUNDATION & FLOOR SLAB PLAN

SET ISSUE DATE
MARCH 4, 2020
100% CD

Sheet:
S1.01