

Sheet Template ID: CPFL-F-07-B

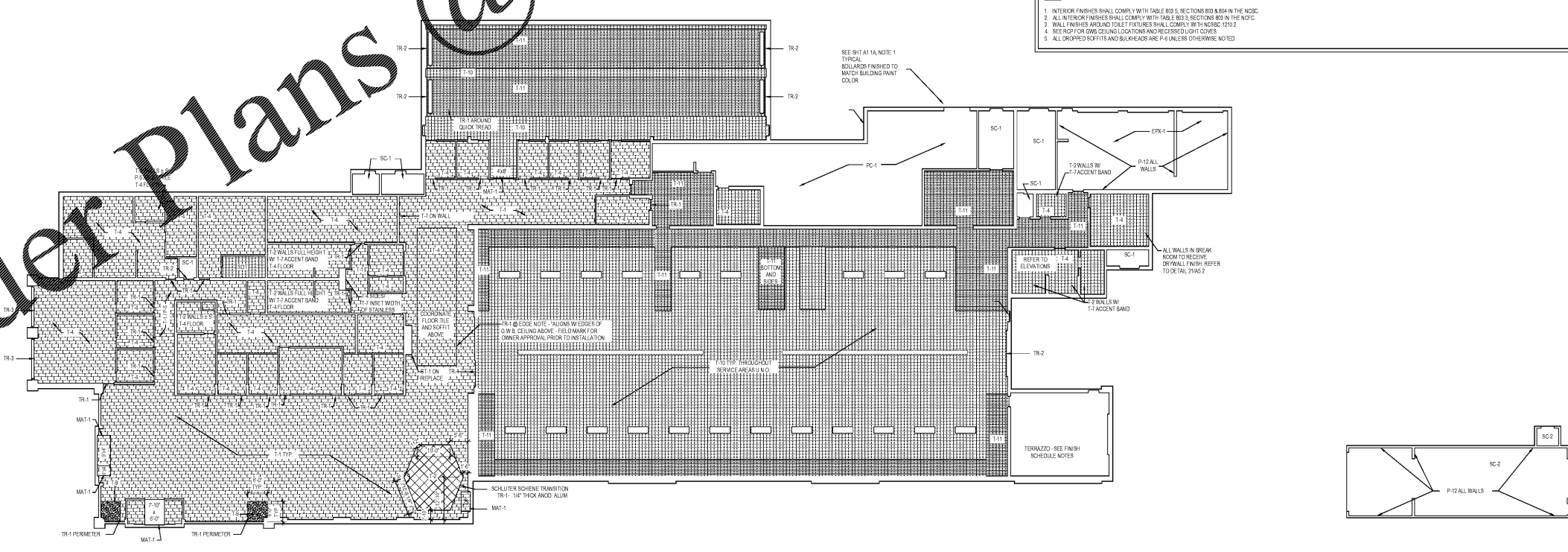
KEY	MANUFACTURER	MATERIAL	NAME/SERIES	NUMBER	COLOR/FINISH/DESCRIPTION	SIZE	CONTACT	NOTES
ACM1	ADI	SHAPED SKY METAL FABRI	PROPRIETARY	-	COMPLETE ACM RAIN SCREEN SYSTEM, BLACK W/ SHAPED SKY PANEL, OVERLAY, BRONZE	4MM THICK	CONTACT ADI, JOE MANSEY, 815-666-1942, EXT. 218	-
ACM2	ADI	SHAPED SKY CEILING PANELS	PROPRIETARY	-	METAL PANELS, BLACK W/ SHAPED SKY PANEL, OVERLAY, BRONZE	2' x 2' W/ 4MM OVERLAY	CONTACT ADI, JOE MANSEY, 815-666-1942, EXT. 218	USE WITH ACT 2
ACM3	ADI	EXTERIOR ACM CLADDING	PROPRIETARY	-	COMPLETE ACM RAIN SCREEN SYSTEM, HYUNDAI NORTH AMERICA BRONZE	4MM THICK	CONTACT ADI, JOE MANSEY, 815-666-1942, EXT. 218	-
ACT-1	ARMSTRONG	ACQUICORR CEILING GRID SYSTEM	UX 18A	1910	WHITE W/ DRIZZLED TISSUE FINISH, SURFACING XL 9/16" GRID, WHITE	2' x 2' x 10/16"	CONTACT ARMSTRONG, 877-761-7611 (EXT. 877-ARMSTRONG)	ALL TRIM, FIXTURES ETC. ON THIS ACT TO BE FACTORY FINISHED & BLACK
ACT-2	ARMSTRONG	ACQUICORR CEILING GRID SYSTEM	PROPRIETARY	-	PREFINISH XL 15/16" GRID, TECH-BLACK	2' x 2' x 15/16"	CONTACT ARMSTRONG, 877-761-7611 (EXT. 877-ARMSTRONG)	-
TZ-1	QC PROMODEX AND INSTALLED	TERRAZZO FINISH SYSTEM	CUSTOM MIX	-	<ul style="list-style-type: none"> <li>PHOTO BOOTH TERRAZZO FLOOR ON G.C. TYPE OF TERRAZZO TO MATCH FFE OF ADJACENT SHOP APPLICABLE</li> <li>TERRAZZO MIX DESIGN KEY 108 SW/HS WINDUP, GRAY EPOXY</li> <li>2% TRUE GRES 1/2"</li> <li>2% BLANCO MEXICANO 1/2"</li> <li>2% TRUE BLACK 1/2"</li> <li>2% TWO TON MIRROR</li> <li>5% ALL SIZED MIRROR</li> </ul>	-	-	
EPK-4	REFER TO SPECIFICATION SHEET SP100-4	EPOXY COATING SYSTEM	-	-	-	-	-	-
EFS-1	DRYVIT	EXTERIOR INSULATING FINISH SYSTEM	REFER TO SPECIFICATION SHEETS	-	-	-	-	-
GR-1	GRUUT	GRUUT	-	183	CHATEAU	-	-	-
GR-10	CUSTOM	GRUUT	-	185	NEW TAURUS	-	-	-
GR-11	CUSTOM	GRUUT	-	560	TRUFFLE	-	-	-
MA1-1	IMPACT SPECIAL TIES, INC	WALK OFF MAT	LP 03	5801	RECYCLED TAPERED FRAME WITH BURRHEAD HEAVY DUTY CARPET TREAD INSERT	-	-	-
P-1	SHERWIN WILLIAMS	PAINT	-	9111	ANTLER VELVET SEMI-GLOSS	-	-	EXTERIOR WALLS, DOORS, FRAMES
P-2	SHERWIN WILLIAMS	PAINT	-	0134	KAFFEE	-	-	4 BASE EXTERIOR WALLS - SERVICE
P-6	SHERWIN WILLIAMS	PAINT	-	SW709	EXTRA WHITE, SATIN	-	-	-
P-7	SHERWIN WILLIAMS	EPOXY PAINT	-	SW709	ADREAEABLE GREY, EPOXY	-	-	GENERAL SHOWROOM AND OFFICES
P-8	SHERWIN WILLIAMS	EPOXY PAINT	-	SW911	ANTLER VELVET, WATER BASED CATALYZED EPOXY	-	-	SERVICE WALLS ABOVE DOOR FRAMES & GENERAL SHOP
P-10	SHERWIN WILLIAMS	PAINT	-	SW709	ADREAEABLE GREY, SEMI-GLOSS LATEX	-	-	SERVICE WALLS BELOW DOOR FRAMES
P-11	MOZEX MASTERS	SPECIAL PAINT FOR INCLINED COLLARS IN SHOWROOM	-	ME239	METALLIC POWDER W/ MANUFACTURER RECOMMENDED SURFACE PREP AND PRIMER	-	-	ALL EXPOSED STEEL INCLINED COLLARS IN SHOWROOM
P-12	SHERWIN WILLIAMS	EPOXY PAINT	-	ME239	PRIMER, 600N/60W/90M CAT-1 COAT HAS EPOXY FILLER/SEALER INTERMEDIATE COAT, 808M/10 MACROPOKY 1/46 FAST CURE EPOXY PART A FINAL COAT, 808M/10 MACROPOKY 1/46 FAST CURE EPOXY PART A	-	-	ALL EXPOSED STEEL INCLINED COLLARS IN SHOWROOM
P-13	SHERWIN WILLIAMS	PAINT	-	B47W	FLAT W/ SW900/ GRAYSHT TINT, FRO-CRYL 896-310 PRIMER	-	-	COLOR SELECTED BY OWNER
P-14	SHERWIN WILLIAMS	PAINT	-	SW709	ADREAEABLE GREY, SATIN LATEX	-	-	COLOR SELECTED BY OWNER
PC-1	REFER TO SPECIFICATION SHEETS	SC-1 WALL/FLUSH POLISHED CONCRETE	REFER TO SPECIFICATION SHEETS	-	-	-	-	-
PL-1	FORMICA	PLASTIC LAMINATE	SOLID COLORS	949-08	WHITE, MATTE	-	-	-
PL-2	FORMICA	PLASTIC LAMINATE	COLOR CORE 2	949-08	WHITE, MATTE	-	-	-
PL-3	FORMICA	PLASTIC LAMINATE	DECOMETAL	M232	BRUSHED PEWTER ALUMINUM	-	-	-
PL-4	FORMICA	PLASTIC LAMINATE	SOLID COLORS	903-08	BLACK (FOR BASEGARD)	-	-	-
PL-5	WILSONART	PLASTIC LAMINATE	CONTRACT COLLECTION	780K-38	STUDIO TEAK	-	-	-
SC-1	PROCOAT	CONCRETE SEALER	-	P042	CLEAR COAT, TROMEL FINISH	-	-	-
SC-2	PROCOAT	CONCRETE SEALER	-	P042	CLEAR COAT, BROOM FINISH	-	-	-
SD1	ARMSTRONG	STATIC DISSIPATIVE TILE	-	S160	MARBLE BEIGE	12" x 12"	-	-
SS-1	DAL TILE	SOLID SURFACE MATERIAL	QUARTZ	N230	MORNING FROST, POLISHED, 1/8" RADIUS MITER EDGE PROFILE	-	-	-
SS-3	CAMBRA	SOLID SURFACE MATERIAL	CLASSIC COLLECTION	-	NEWCASTLE, BASIC BEADED EDGE PROFILE	-	-	TECH BREAKROOM
ST-1	SCOR	CULTURED STONE VENEER	-	ECHO RIDGE	CAP WITH CAT-1 FILL (20A) FLAT BELL PEELES, COLOR PAROCHMENT	-	-	FIRE PLACE
T-1	MAAZZO	PORCELAIN TILE	SYSTEM	-	SABBA, N, UNPOLISHED, 1/8 STEP @ 110° RUNNING 90/90 PATTERNS	12" x 24" x 3/16"	-	USE WITH GR-1
T-2	MAAZZO	PORCELAIN TILE	SYSTEM	-	SABBA, N, POLISHED, 8/16° BE BEGGERS TO FIELD	24" x 24"	-	USE WITH GR-1
T-4	DAL TILE	PORCELAIN TILE	SYSTEM	SN9	SN9 BRUND	8" x 8"	CONTACT DAL TILE, FRED DAVIS, 972-423-5484	USE WITH GR-1
T-7	DAL TILE	MOSAIC TILE	CRYSTAL BIKES	CB56	SAPPHIRE LAGOON CROSS	-	CONTACT DAL TILE, FRED DAVIS, 972-423-5484	USE WITH GR-1
T-8	PEBBLE TILE	PEBBLE TILE	JAWA JAWA	-	JAWA JAWA	12" x 12" x 1/2" SHEET	CONTACT PEBBLE TILE SHOP, 888-870-8991	USE WITH GR-1
T-10	AUTOSTONE	SHOP TILE	ENVIROSHOP	-	CEFFALO GREY	12" x 12"	-	USE WITH GR-1
T-11	AUTOSTONE	SHOP TILE	ENVIROSHOP	-	ELSA	12" x 12"	-	USE WITH GR-10
TB-1	MAAZZO	PORCELAIN TILE	SYSTEM	-	UNPOLISHED, SABBA, N, (CUT TILE WITH FACTORY EDGE UP)	4" x 20"	-	USE WITH GR-1
TB-2	DAL TILE	PORCELAIN TILE	SN/TNO	-	SN9 BRUND (CUT TILE WITH FACTORY EDGE UP)	4" x 20" @ 4" x 30" IN TECH BREAKROOM	CONTACT DAL TILE, FRED DAVIS, 972-423-5484	USE WITH GR-1
TB-3	AUTOSTONE	SHOP TILE	ENVIROSHOP	-	CEFFALO GREY, CUT TILE WITH FACTORY EDGE UP	8" x 12"	-	USE WITH GR-1
TB-11	AUTOSTONE	SHOP TILE	ENVIROSHOP	-	ELSA, CUT TILE WITH FACTORY EDGE UP	8" x 12"	-	USE WITH GR-1
TR-1	SCHLUTER	TRANSITION	SCHEME	-	CLEAR ANODIZED ALUMINUM	-	-	USE WITH GR-11
TR-2	SPECIAL STEEL ANGLE IN SLAB	SEE DETAIL D104-4	-	-	STAINLESS STEEL ANGLE REQUIRED AT DOORS 101A AND 101B	-	-	-
TR-3	SPECIAL STEEL ANGLE IN SLAB	SEE DETAIL D104-4	-	-	STAINLESS STEEL ANGLE REQUIRED AT DOORS 107C AND 107D	-	-	-
WB-1	JOHNDEERE	WALK BEHIND BARE	-	-	TO BE SELECTED BY OWNER FROM FINISHED COLOR RANGE	-	-	NOTES
MS-1	MECHO SHADE MANUAL OPERATION	MECHO SHADE MODEL 1300-SEE SPECIFICATIONS	-	-	-	-	-	NOTES
MS-2	ELECTRICALLY OPERATED MECHO SHADE	CEILING POCKET MECHO SHADE	SEE SPECIFICATIONS AND ELECTRICAL PLANS	-	-	-	-	NOTES

- NOTES
- 1. TO ACHIEVE PROPER INSTALLATION OF STAINLESS STEEL ANGLE, FORM TIE, E.C. SHALL USE TYPICAL LENDING SYSTEM OR APPROVED EQUAL WITH DOUBLE SPREADING TECHNIQUE.
  - 2. PROVIDE INSTALLATION SHOP DRAWINGS FOR ALL TILE LAYOUTS AND INCLUDE PROPOSED CONTROL JOINT LOCATIONS.
  - 3. FOR 1/2" UTILITY 6" @ 3" TILE IN TECH BREAKROOM
  - 4. MICROSHADES - 100% VISIBLE - 100% WHITE

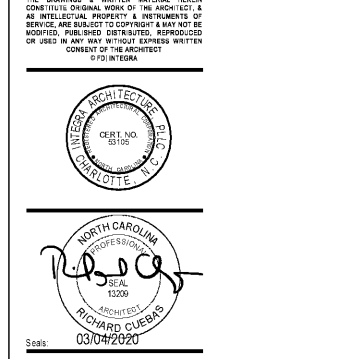
NO.	ROOM NAME	FLOOR	BASE	WALLS		CEILING	REMARKS
				TYP.	REAR		
101	SERVICE DRIVE	T-1011	TB-10TB-11	P-3P-8	-	P13	-
102	SERVICE MANAGER	T-4	TB-4	P-1	-	ACT-1	-
103	SERVICE ADVISER	T-4	TB-4	P-1	-	ACT-1	-
104	SERVICE ADVISER	T-4	TB-4	P-1	-	ACT-1	-
105	SERVICE ADVISER	T-4	TB-4	P-1	-	ACT-1	-
106	SERVICE ADVISER	T-4	TB-4	P-1	-	ACT-1	-
107	SERVICE ADVISER	T-4	TB-4	P-1	-	ACT-1	-
108	ELECTRICAL ROOM	SC-1	WB-1	P-6	-	EXP-10	-
109	SPRINKLER RISER ROOM	SC-1	WB-1	P-6	-	EXP-10	-
110	CUSTOMER LOUNGE	T-107-4	TB-1	P-8	-	ACT-1	DWB CEILING - P-6 TYPICAL
111	NOT USED	-	-	-	-	-	-
112	NOT USED	-	-	-	-	-	-
113	CARRIER	T-4	TB-4	P-6	-	ACT-1	-
114	KEYS	T-4	TB-4	P-6	-	ACT-1	-
115	CORRIDOR	T-1	TB-1	P-6	-	ACT-1	-
116	NOT USED	-	-	-	-	-	-
117	TRAINING	T-1	TB-1	P-6	-	ACT-1	-
118	MEN'S TOILET	T-4	WALL TILE	T-9T-1	-	DWB-P-6	T-7 ACCENT BAND - SEE ELEVATIONS FOR TILE COLOR, DETAIL AND HATCH FOR FOUNTAIN
119	WOMEN'S TOILET	T-4	WALL TILE	T-9T-1	-	DWB-P-6	T-7 ACCENT BAND - SEE ELEVATIONS FOR TILE LAYOUT
120	W/STREET	T-4	TB-4	P-6	-	ACT-1	-
121	STORAGE	T-4	TB-4	P-6	-	ACT-1	-
122	NOT USED	-	-	-	-	-	-
123	FILES	T-4	TB-4	P-6	-	ACT-1	-
124	CAFE	T-1	TB-1	P-6	-	DWB-P-6	T-7 TILE ACCENT
125	NOT USED	-	-	-	-	-	-
126	SALES OFFICE	T-4	TB-4	P-6	P-1	ACT-1	ACCENT WALLS P-1
127	SALES OFFICE	T-4	TB-4	P-6	P-1	ACT-1	ACCENT WALLS P-1
128	SALES MANAGERS	T-4	TB-4	P-6	P-1	ACT-1	ACCENT WALLS P-1
129	SALES OFFICE	T-4	TB-4	P-6	P-1	ACT-1	ACCENT WALLS P-1
130	SALES OFFICE	T-4	TB-4	P-6	-	ACT-1	ACCENT WALLS P-1
131	GENERAL MANAGER	T-4	TB-4	P-6	-	ACT-1	ACCENT WALLS P-1
132	TOILET	T-4	WALL TILE	-	-	ACT-1	ACCENT WALLS P-1
133	CLOSET	T-1	TB-1	P-6	-	ACT-1	-
134	SHOWROOM 'A'	T-1	TB-1	P-6	-	DWB-P-6	ALL DWB CEILING PAINTED P-6, TYP
135	RESTROOM	T-1	TB-1	P-6	-	DWB-P-6	-
136	RECEPTION	T-1	TB-1	P-6	-	ACT-1	ACCENT WALLS P-1
137	NEWSPAPER CLOSET	T-4	TB-4	P-6	-	ACT-1	ACCENT WALLS P-1
138	FILE	T-4	TB-4	P-6	-	ACT-1	-
139	FILE	T-4	TB-4	P-6	-	ACT-1	-
140	FILE	T-4	TB-4	P-6	-	ACT-1	-
141	FILE	T-4	TB-4	P-6	-	ACT-1	-
142	FILE	T-4	TB-4	P-6	-	ACT-1	-
143	FILE	T-4	TB-4	P-6	-	ACT-1	-
144	FILE	T-4	TB-4	P-6	-	ACT-1	-
145	FILE	T-4	TB-4	P-6	-	ACT-1	-
146	FILE	T-4	TB-4	P-6	-	ACT-1	-
147	FILE	T-4	TB-4	P-6	-	ACT-1	-
148	FILE	T-4	TB-4	P-6	-	ACT-1	-
149	FILE	T-4	TB-4	P-6	-	ACT-1	-
150	TOILET	T-4	WALL TILE	T-9P-6	-	ACT-1	-
151	JANITOR	SC-1	WB-1	P-6	-	ACT-1	-
152	BREAK ROOM	T-4	TB-4	P-6P-10	-	ACT-1	REFER TO CHAIR RAIL DETAIL ON SHEET AS-2
153	TELECOM	SC-2	WB-1	P-6	-	ACT-1	-
201	SERVICE GARAGE	T-107-11	TB-10TB-11	P-3P-8	-	EXP-10 P-43	SEE ELEVATIONS FOR HEIGHT BREAK IN PAINT SCHEME
202	SPECIAL TOOLS	T-4	TB-4	P-7	-	EXP-10 P-13	-
203	PARTS TECH	T-11	TB-11	P-7	-	EXP-10 P-13	-
204	PARTS MANAGER	T-4	TB-4	P-7	-	EXP-10 P-13	-
205	PARTS STORAGE	PC-1	-	P-7	-	EXP-10 P-13	MEZZANINE FACTORY PAINTED
206	PARTS RECEIVING	PC-1	-	P-7	-	EXP-10 P-13	-
207	TIRES	T-11	TB-11	P-7	-	EXP-10 P-13	SHOP PAINT SCHEME CONTINUES IN OPEN SPACE ADJACENT
208	TIRE STORAGE	SC-1	-	P-7	-	EXP-10 P-13	-
209	CONTAINERMENT	SC-1	-	P-7	-	EXP-10 P-13	-
210	JANITOR	SC-1	TB-11	P-7	-	EXP-10 P-13	SEE NOTE 3, SHEET 3A, FOR SS PANELS
211	WOMEN'S TOILET	T-4	TB-4	P-7	-	ACT-1	SEE ELEVATIONS FOR WALL TILE
212	CORRIDOR	T-11	TB-11	P-7	-	EXP-10 P-13	SEE ELEVATIONS FOR SPECIAL SS PANELS
213	MEN'S TOILET	T-4	TB-4	P-7	-	ACT-1	-
214	LOCKER ROOM	T-4	TB-4	P-7	-	ACT-1	-
215	REST	EPK-1	EPK-1	P-12	-	EXP-10 P-13	-
216	WASH	EPK-1	EPK-1	P-12	-	EXP-10 P-13	-
217	BREAK ROOM	T-4	TB-4	P-14P-1	-	ACT-1	REFER TO CHAIR RAIL DETAIL ON SHEET AS-2
218	ELECTRICAL ROOM	SC-1	-	P-7	-	EXP-10	-
220	PHOTO	TZ-1	-	P-7	-	EXP-10 P-13	NOTE SPECIAL TERRAZZO MIX FOR FLOOR
301	CAR WASH	SC-2	-	P-12	-	EXP-10 P-13	-
401	WAREHOUSE - NEW FINISHES	SC-1 IF NEW	-	-	-	E-T-R	ONLY PAINT NEW INTERIOR ADDED SURFACES
402	WAREHOUSE	SC-1 IF NEW	-	-	-	E-T-R	ONLY PAINT NEW INTERIOR ADDED SURFACES

- NOTES
- INTERIOR FINISHES SHALL COMPLY WITH TABLE B03.5, SECTIONS B03 & B04 IN THE NSIC.
  - ALL INTERIOR FINISHES SHALL COMPLY WITH TABLE B03.3, SECTION B03 IN THE NSIC.
  - WALL FINISHES AROUND TOILET FIXTURES SHALL COMPLY WITH NSIC 125.2
  - SEE SHOP FOR DWB CEILING LOCATIONS AND RECESSED LIGHT COVERS
  - ALL UNCRACKED ROOF FITS AND BULKHEAD ARE P-1 UNLESS OTHERWISE NOTED

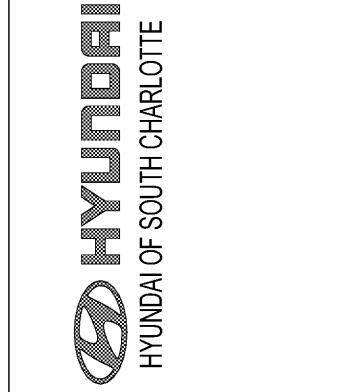
Order Plans @



SCALE: 1/8" = 1'-0" FINISH PLAN 02 CARWASH SCALE: 1/8" = 1'-0" FINISH PLAN 01



Date: 03/04/2020



Revisions	Number	Date	Description