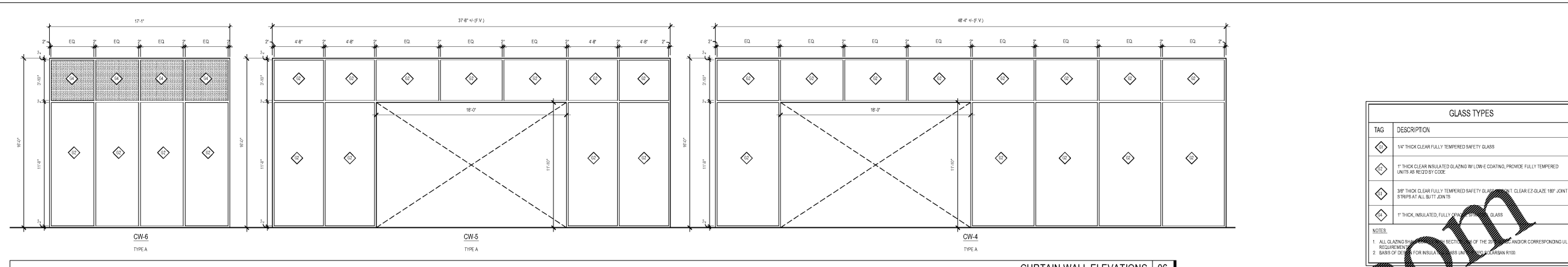


File: A:\23\2300 Hyundai of S. Charlotte (DWG) - CAD Series - Plotfile: 3/4/2020 10:21 PM by CHRIS; Saved: 3/4/2020 10:21 PM by CHRIS  
 Sheet Template ID: CPWF-07-B



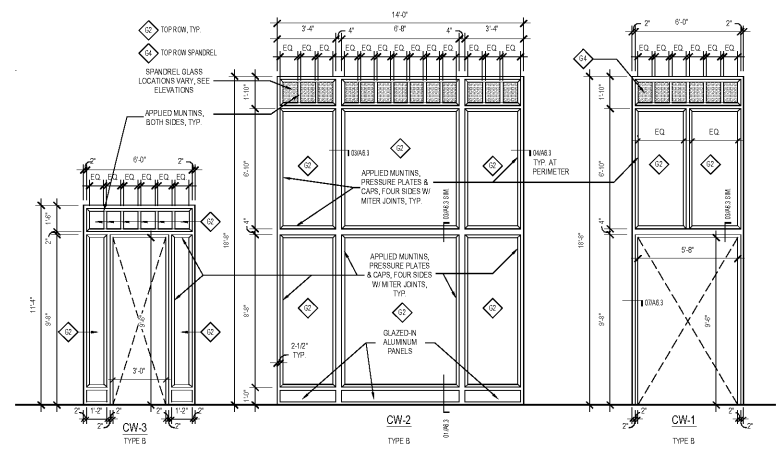
SCALE: 1/4" = 1'-0" CURTAIN WALL ELEVATIONS | 06

GLASS TYPES	
TAG	DESCRIPTION
◇	3/4" THICK CLEAR FULLY TEMPERED SAFETY GLASS
◇	1" THICK CLEAR INSULATED GLAZING W/ LOW-E COATING, PROMOTE FULLY TEMPERED UNITS AS REQUIRED BY CODE
◇	3/8" THICK CLEAR FULLY TEMPERED SAFETY GLAZING W/ CLEAR EZ-GLAZE 180° JOINT STRIPS AT ALL BUTT JOINTS
◇	1" THICK INSULATED, FULLY TEMPERED SAFETY GLASS

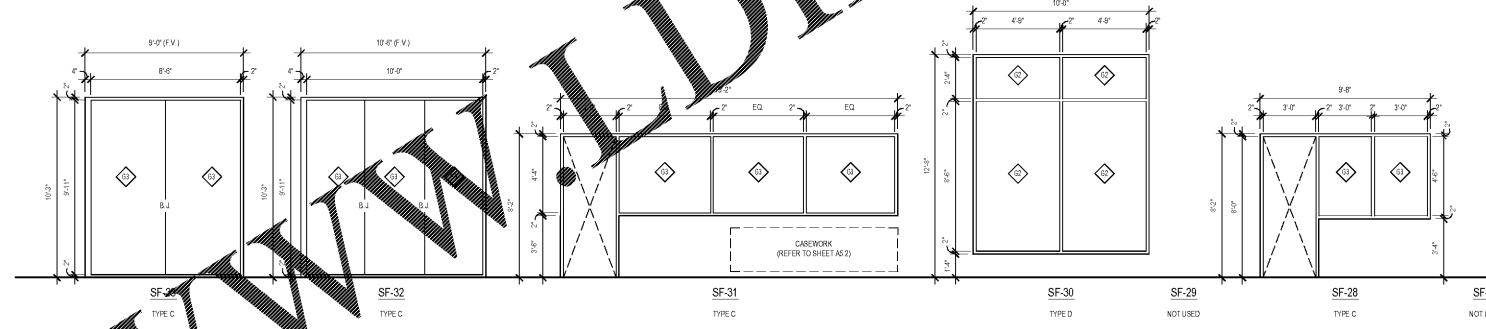
NOTES:  
 1. ALL GLAZING SHALL BE FULLY TEMPERED SAFETY GLASS UNLESS OTHERWISE SPECIFIED.  
 2. BASIS OF DESIGN FOR INSULATED GLAZING UNITS (IGU) IS AS SHOWN.

STOREFRONT & CURTAIN WALL LEGEND					
TYPE	MANUFACTURER	MATERIAL	NUMBER/SERIES	COLOR/FINISH	SIZE
A	KAMNEER	ALUMINUM	880 SYSTEM 1	CLASS 1 ANODIZED CLEAR (ANOD-D)	2'10" x 10'0"
B	KAMNEER	ALUMINUM	880 SYSTEM 1	CLASS 1 ANODIZED DARK BRONZE (ANOD-D)	2'10" x 10'0"
C	KAMNEER	ALUMINUM	401	CLASS 1 ANODIZED CLEAR (ANOD-D)	7' x 4'0"
D	KAMNEER	ALUMINUM	401	CLASS 1 ANODIZED CLEAR (ANOD-D)	7' x 4'0"
E	KAMNEER	ALUMINUM	401	CLASS 1 ANODIZED DARK BRONZE (ANOD-D)	7' x 4'0"

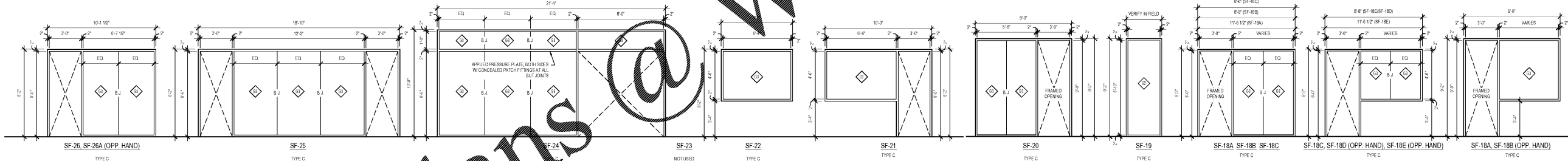
NOTES:  
 1. DIMENSIONS SHOWN ARE TO FACE UNLESS OTHERWISE SPECIFIED. MANUFACTURER SHALL VERIFY ALL OPENINGS, ADJUST AND LEAVE SPACE AS REQUIRED FOR SHIMMING, ETC.  
 2. THRESHOLDS SHALL BE IN ACCORDANCE WITH ADA ACCESSIBILITY REQUIREMENTS.  
 3. STOREFRONT DOORS SHALL BE FULLY OPERABLE WITH CONCEALED ROCKER DEVICES, CONCEALED OVERHEAD CLOSERS, BUTT HINGES AND STANDARD PUSH/PULLS.  
 4. SOME METAL AND OPERABLE PARTS SHALL MATCH THE FINISH OF THE SYSTEM IN WHICH THEY ARE INSTALLED.  
 5. ELEVATIONS ARE TYPICAL. REFER TO PLANS TO COORDINATE HANDING.  
 6. 1" BUTT JOINT



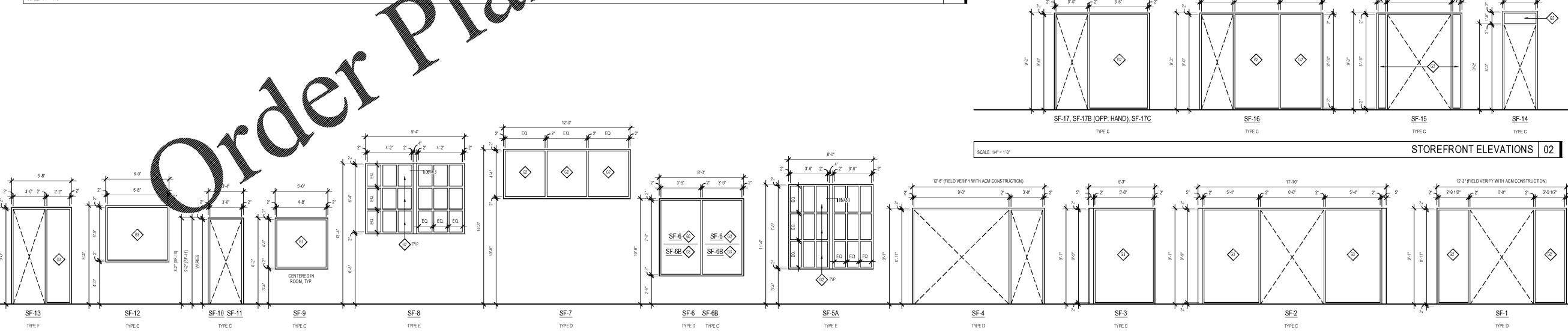
SCALE: 1/4" = 1'-0" CURTAIN WALL ELEVATIONS | 05



SCALE: 1/4" = 1'-0" STOREFRONT ELEVATIONS | 04



SCALE: 1/4" = 1'-0" STOREFRONT ELEVATIONS | 03



SCALE: 1/4" = 1'-0" STOREFRONT ELEVATIONS | 02

SCALE: 1/4" = 1'-0" STOREFRONT ELEVATIONS | 01

**POINTEGRA**  
 an Inboga Architecture, PLLC DBA  
 110 East Kingston Avenue, Ste. 20  
 Charlotte, NC 28203  
 704.372.0001  
 www.inboga.com

THE COURTESY & TRUSTED MATERIAL HEREIN CONSTITUTE ORIGINAL WORK OF THE ARCHITECT & AS SUCH, ARE THE PROPERTY OF THE ARCHITECT & WILL BE SUBJECT TO COPYRIGHT & MAY NOT BE REPRODUCED, COPIED, OR TRANSMITTED IN ANY MANNER OR BY ANY MEANS, ELECTRONIC OR MECHANICAL, INCLUDING PHOTOCOPYING, RECORDING, OR BY ANY INFORMATION STORAGE AND RETRIEVAL SYSTEM, WITHOUT THE EXPRESS WRITTEN CONSENT OF THE ARCHITECT.  
 © P.O. INBOGA

**REGISTERED ARCHITECT**  
 CERT. NO. 51103  
 CHARLOTTE, N.C.

**NORTH CAROLINA**  
 PROFESSIONAL ARCHITECT  
 RICHARD CUEBES  
 03/04/2020

**HYUNDAI**  
 HYUNDAI OF SOUTH CHARLOTTE

Revisions:  
 Number Date Description

Project Title:  
**HYUNDAI SOUTH CHARLOTTE**

10518 CADILLAC STREET  
 PINEVILLE, NC 28134

Project No.: 2539.00  
 Drawing Title:  
**STOREFRONT & CURTAIN WALL ELEVATIONS**

SET ISSUE DATE  
 MARCH 4, 2020

Sheet:  
**A6.2**