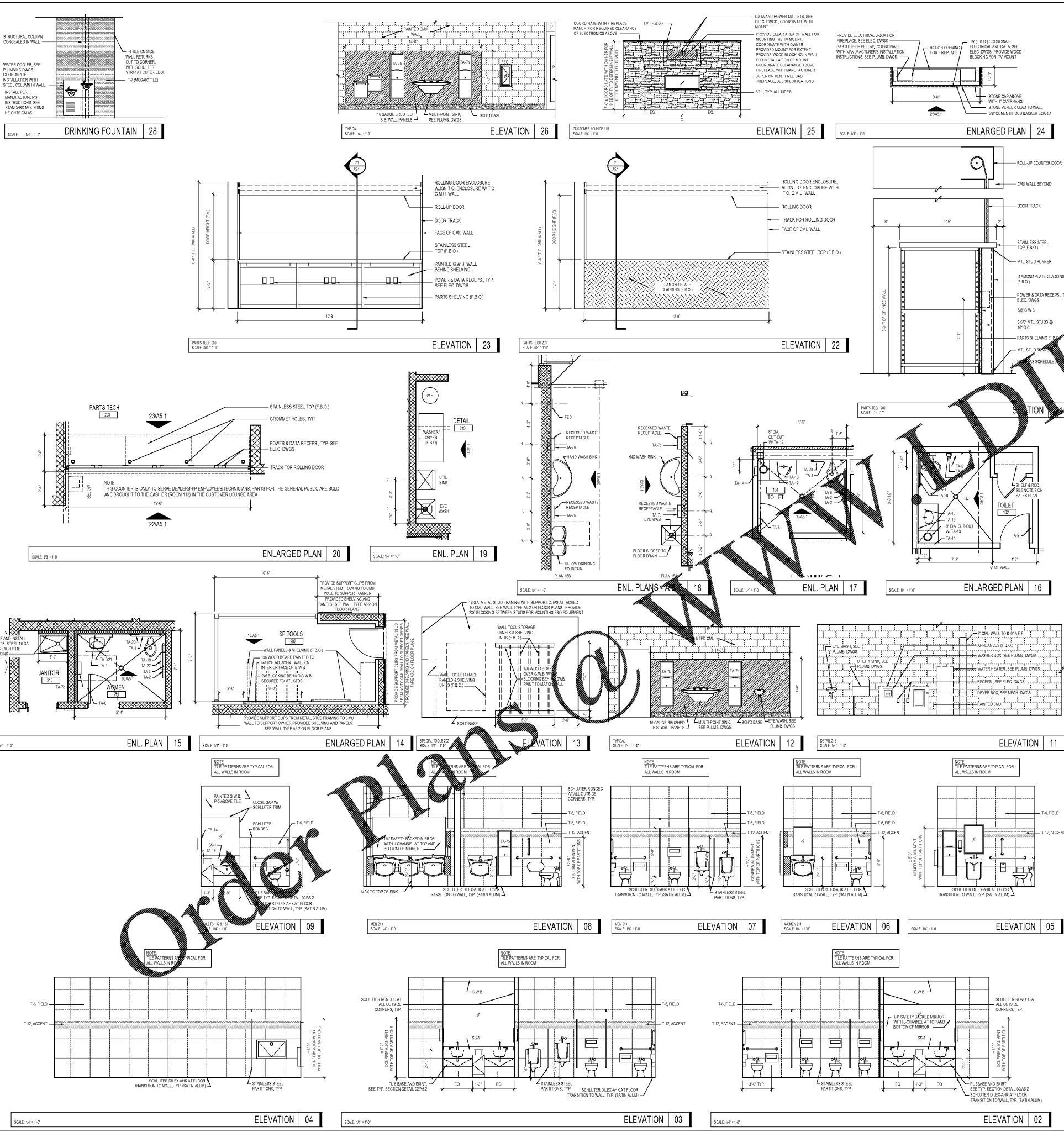
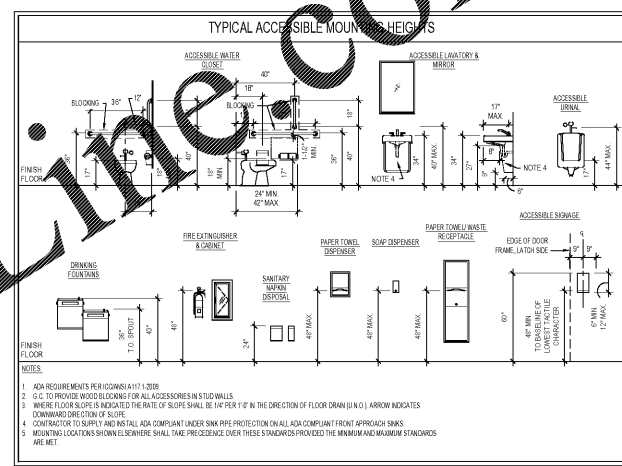


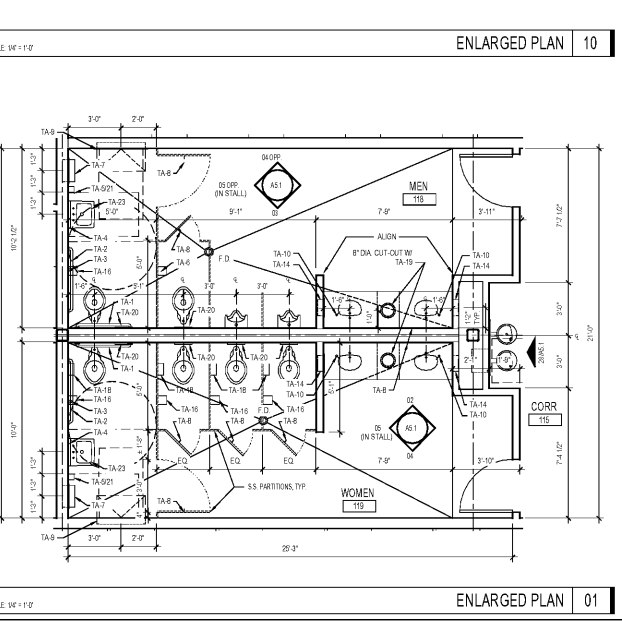
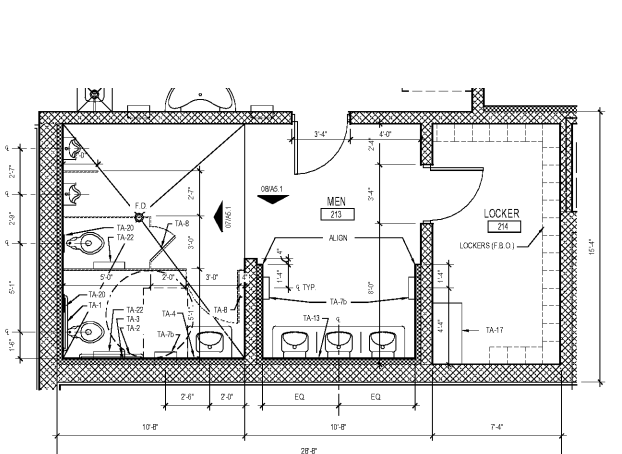
Sheet Template ID: CDFE-F-07-B
File: P:\2526.00 Hyundai of S. Charlotte (DWG)_CD\AS Series_Planet_3/5/2020 11:10 AM by CHRIS_Somer_3/4/2020 10:03 PM by CHRIS



| NO | DESCRIPTION | QTY | FINISH | MODEL NO |
|------|--|---------------------|----------------------|--------------------------------------|
| TA1 | 18" GRAB BAR | 800R0K | SATN S.S. | E-688R-18 |
| TA2 | 12" GRAB BAR | 800R0K | SATN S.S. | E-688R-12 |
| TA3 | 18" GRAB BAR | 800R0K | SATN S.S. | E-688R-18 |
| TA4 | S.S. CHROME FRAMED MIRROR (24" W X 36" H) | 800R0K | SATN S.S. | E-362548 |
| TA5 | AUTOMATIC WALL MOUNTED FOAM SOAP DISPENSER* | 800R0K | SATN S.S. | E-3010 |
| TA6 | SINGLE ROLL TOILET PAPER DISPENSER | 800R0K | BRIGHT S.S. | E-8485 |
| TA7 | RECESSED PAPER TOWEL DISP. & WASTE RECEPT (10 GALL.) | 800R0K | SATN STAINLESS STEEL | E-3344 (ALUMINUM FRAME FOR 12 GALL.) |
| TA8 | RECESSED PAPER TOWEL DISP. & WASTE RECEPT (18 GALL.) | 800R0K | SATN STAINLESS STEEL | E-2947 |
| TA9 | SINGLE ROBE HOOK | 800R0K | SATN CHROME | E-6717 |
| TA10 | HORIZONTAL RECESSED MOUNTED GARY CHANGING STATION | KOALA WARE PRODUCTS | STAINLESS STEEL | KH11348RE |
| TA11 | AUTOMATIC SOAP DISPENSER (COUNTERTOP/PANTRY W/REED) | PROST | CHROME PLASTIC | CODE 718 |
| TA12 | FRAMELESS MIRROR (36" W X 48" H) | BY G.C. | 1/4" SAFETY BACKED | PREPARE TOP AND BOTTOM CHANNEL |
| TA13 | FRAMELESS MIRROR (36" W X 48" H) | BY G.C. | 1/4" SAFETY BACKED | PREPARE TOP AND BOTTOM CHANNEL |
| TA14 | RECESSED PAPER TOWEL DISPENSER | 800R0K | SATN STAINLESS STEEL | E-3201 |
| TA15 | WIP. AIR DRYER/PROTECTOR | 800R0K | STAINLESS STEEL | E-2211 |
| TA16 | 1/2" ROLL TOILET PAPER DISPENSER | 800R0K | STAINLESS STEEL | E-2088 |
| TA17 | ADJ. LOCKER ROOM BENCH (24" X 42" W X S.S. PRESTAS) | PROTECTOR | ROCKWELL STEEL CO. | |
| TA18 | SANITARY WIPER DISPENSER | 800R0K | STAINLESS STEEL | E-2701 |
| TA19 | 8" DIAMETER TRASH GRABBER | WIDDETT | STAINLESS STEEL | 7925 |
| TA20 | SURFACE MOUNTED SOAP DISPENSER | 800R0K | STAINLESS STEEL | CODE 718 |
| TA21 | 1/2" ROLL TOILET PAPER DISPENSER | 800R0K | STAINLESS STEEL | E-2088 |
| TA22 | TWIN ARMED ROLL TOILET PAPER DISPENSER | 800R0K | STAINLESS STEEL | E-2088 |
| TA23 | UNDERBINK PROTECTIVE ENCLOSURE | TRUBRO | P.V.C. | 2018-4.4L |
| TA24 | FREE STANDING WASTE RECEPTACLE** | BRADLEY | | 711-8 |



- 1. ADA REQUIREMENTS PER ICC/ANSI A117.1-2009
- 2. G.C. TO PROVIDE WOOD GRADING FOR ALL ACCESSIBLE STUDD WALLS
- 3. WAREHOUSE FLOOR SLIPS IS REQUIRED. THE PARTS OF SLIP RESISTANT BE 1/4" DEEP 1" IN THE DIRECTION OF FLOOR DRAIN (N.O.S.) ARROW INDICATES DRAINAGE DIRECTION OF SLIP RESISTANT
- 4. CONTRACTOR TO VERIFY AND HANG SINK FLY PROTECTION ON ALL ADA COMPLIANT FRONT APPROACH SINKS
- 5. MOUNTING LOCATIONS SHOWN ELSEWHERE SHALL TAKE PRECEDENCE OVER THESE STANDARDS PROVIDED THE MINIMUM AND MAXIMUM STANDARDS ARE MET



in+egra
an Inegra Architecture, PLLC DBA
110 East Kingston Avenue, Ste. 20
Charlotte, NC 28203
704.372.0001
www.inegra.com

THE OWNERS & WRITER HEREBY WARRANT THAT THE INFORMATION CONTAINED HEREIN IS ORIGINAL WORK OF THE ARCHITECT & IS NOT A REPRODUCTION OF ANY OTHER WORK. ANY REPRODUCTION OR USE IN ANY MANNER WITHOUT THE WRITTEN CONSENT OF THE ARCHITECT IS PROHIBITED.

ArchitecturalLine.com
CERT. NO. 3013
NORTH CAROLINA PROFESSIONAL ARCHITECT
RICHARD CUEBES
03/04/2020

HYUNDAI
HYUNDAI OF SOUTH CHARLOTTE

Revisions:
Number Date Description

Project Title:
HYUNDAI SOUTH CHARLOTTE

10518 CADILLAC STREET
PINEVILLE, NC 28134

Project No.: 2526.00

Drawing Title:
ENLARGED PLANS, INTERIOR ELEVATIONS & DETAILS

SET ISSUE DATE
MARCH 4, 2020

Sheet:
A5.1