

ABBREVIATIONS	
A.F.F.	ADJUSTED FINISHED FLOOR
A.F.S.	ADJUSTED FLOOR SLAB
A.C.T.	ADJUSTED CEILING TILE
ALM.	ALUMINUM
APPROX.	APPROXIMATELY
B.O.	BOTTOM OF
BRS.	BREAST
CB.	CORNER BOARD
C.T.	CERAMIC TILE
C.S.B.	CLEAR BIT
CONC.	CONCRETE
C.M.A.	CONCRETE MASONRY UNIT
CONT.	CONTINUOUS
C.J.	CONTROL JOINT
C.M.	CULTURED MARBLE
C.W.	CROWN MOULDING
D.S.	DRAIN SPOT
D.W.	DRAINAGE
E.I.F.S.	EXTERIOR INSULATION/FINISH SYSTEM
E.W.C.	ELECTRIC WATER COOLER
E.S.P.	ESPRESSO
E.J.	EXPANSION JOINT
F.F.	FIRE EXTINGUISHER
F.E.C.	FIRE EXTINGUISHER CABINET
F.D.	FLOOR DRAIN
F.R.T.	FIRE RESISTANT TREATED
F.T.	FLOORING
G.A.	GRADE
G.W.B.	GYPSONUM WALL BOARD
GL.	GLASS
LT.	LIGHT
MD.	MATERIAL
NOM.	NOMINAL
M.E.C.H.	MECHANICAL
M.F.S.	MANUFACTURING
M.O.	MASONRY OPENING
M.R.L.B.	MASONRY REINFORCING U.B.
M.S.	METAL
M.T.S.	METAL STUD
O.C.	ON CENTER
O.S.	OUTSIDING
O.P.P.	OPPOSITE
P.L.	PANEL JOINT
P.L.M.	PLASTER/LAMINATE
P.C.P.	PAINT COLOR
P.P.	POLYETHYLENE
P.T.	PRESSURE TREATED
P.	PAINTED
P.V.A.	POLYVINYL CHLORIDE
R.C.	REINFORCING REINFORCING
R.F.	ROOF FLASHING
R.O.	ROOF DRAIN
R.L.	ROOF LINDER
R.O.	ROUGH OPENING
R.C.	READY CONCRETE
S.W.	SHOWER
S.B.M.	SOIL BENEATH MATERIAL
S.Q.	SQUARE
S.S.	STAINLESS STEEL
S.T.	STRUCTURAL
S.T.L.	STEEL
T.O.P.	TOP OF
T.O.M.	TOP OF MASONRY
T.P.	THERMOPLASTIC POLYURETHANE
T.S.	TUBE STEEL
TYP.	TYPICAL
U.N.O.	UNLESS NOTED OTHERWISE
V.B.T.	VERTICAL
V.C.T.	VINYL COMPOSITION TILE

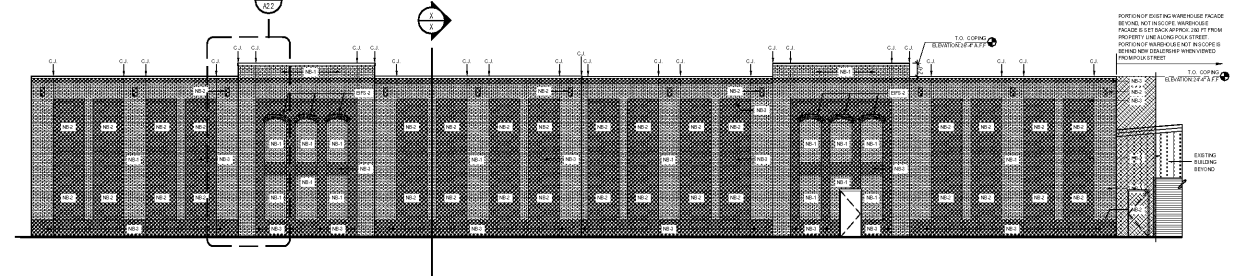
EXTERIOR MATERIAL LEGEND	
NEW DEALERSHIP MATERIALS	
ACM-1	SHAPED DRY ALUMINUM COMPOSITE CLADDING COMPLETE ACM RAIN SCREEN SYSTEM, BLACK W/ SHAPED DRY PANEL OVERLAY, HYUNDAI NORTH AMERICA BRONZE
ACM-3	EXTERIOR ALUMINUM COMPOSITE CLADDING COMPLETE ACM RAIN SCREEN SYSTEM, HYUNDAI NORTH AMERICA BRONZE
BR-1	FIELD BRICK (MODULAR SIZE) CAROLINA COLLECTION, #F39 "DARK PALOMINO RIPLE", STANDARD MORTAR COLOR
BR-2	ACCENT BRICK (MODULAR SIZE) PALMETTO, TSP 65C-SP "PALMETTO", CUSTOM MORTAR COLOR
EFB-1	EXTERIOR INSULATION FINISH SYSTEM DRYWIT, "SANDPEBBLE FINE" TEXTURE, CUSTOM COLOR
WAREHOUSE FACADE MATERIALS	
NB-1	FIELD BRICK (MODULAR SIZE) DRYWIT, "NEW BRICK" LIGHTWEIGHT INSULATED BRICK PRODUCT, TEXTURE AND COLOR TO MATCH "BR-1" TO BEST EXTENT POSSIBLE
NB-2	ACCENT BRICK (MODULAR SIZE) DRYWIT, "NEW BRICK" LIGHTWEIGHT INSULATED BRICK PRODUCT, TEXTURE SAME AS "NB-1" COLOR TO BE SHADE LIGHTER THAN NB-1
NB-3	ACCENT BRICK (MODULAR SIZE) DRYWIT, "NEW BRICK" LIGHTWEIGHT INSULATED BRICK PRODUCT, TEXTURE AND COLOR TO MATCH "NB-2" TO BEST EXTENT POSSIBLE
EFB-2	EXTERIOR INSULATION FINISH SYSTEM DRYWIT, "SANDPEBBLE FINE" TEXTURE, CUSTOM COLOR TO MATCH "NB-2" COLOR

FOIN+EGRA
an Inlogra Architecture, PLLC DBA
110 East Kingston Avenue, Ste. 20
Charlotte, NC 28203
704.372.0001
www.foin+egra.com

"THE OWNERS & WRITER MATERIAL HEREIN CONSTITUTE ORIGINAL WORK OF THE ARCHITECT. AS AN INTELLECTUAL PROPERTY & INTRINSIC PART OF SERVICE, ARE SUBJECT TO COPYRIGHT & MAY NOT BE REPRODUCED, PHOTOCOPIED, REPRODUCED, REPRODUCED OR USED IN ANY WAY WITHOUT EXPRESS WRITTEN CONSENT OF THE ARCHITECT."
© F.OIN+EGRA

REGISTERED PROFESSIONAL ARCHITECT
CERT. NO. 38170
SOUTH CAROLINA
RICHARD C. CLEGG

NORTH CAROLINA PROFESSIONAL ARCHITECT
RICHARD C. CLEGG
ARCHITECT
RICHARD CLEGG
03/04/2020



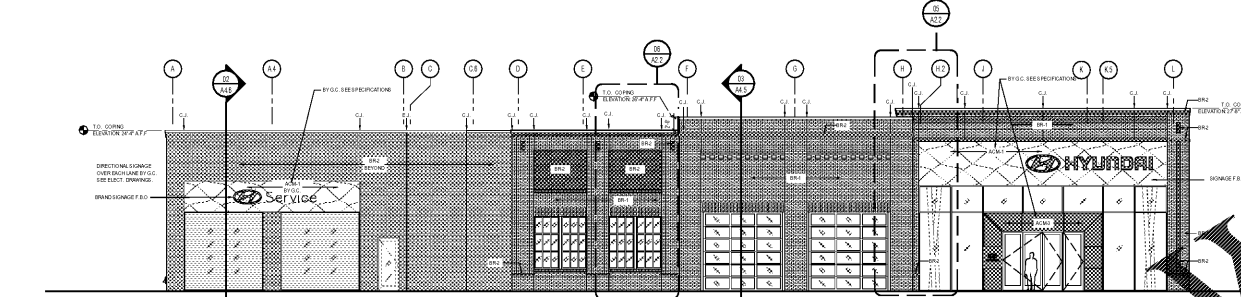
05 - EXTERIOR ELEVATION (FACADE FACING POLK STREET)

EXISTING WAREHOUSE FACADE CLAD IN NEW MATERIAL. FACADE SET BACK FROM PROPERTY LINE APPROX 200 FT. SCALE: 3/32" = 1'-0"



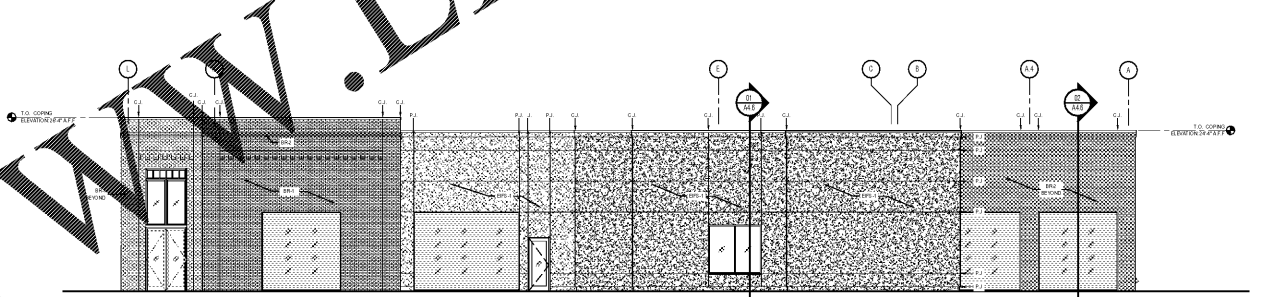
KEY PLAN

SCALE: 1/8" = 1'-0"



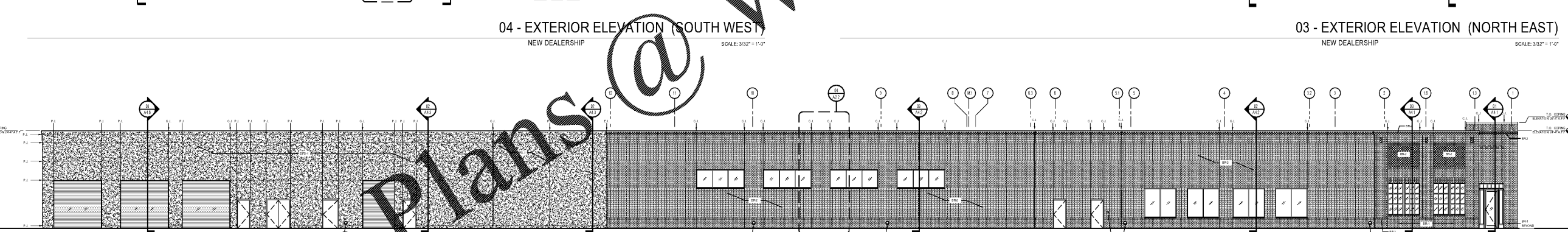
04 - EXTERIOR ELEVATION (SOUTH WEST)

NEW DEALERSHIP SCALE: 3/32" = 1'-0"



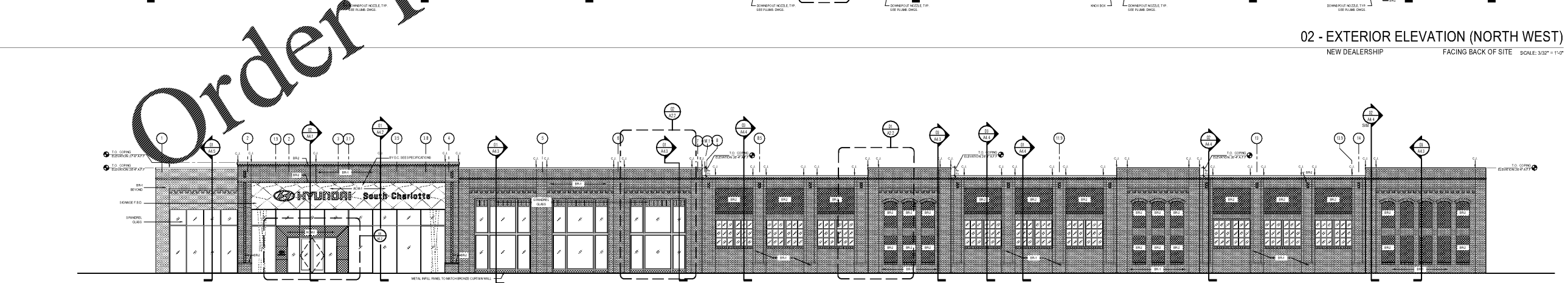
03 - EXTERIOR ELEVATION (NORTH EAST)

NEW DEALERSHIP SCALE: 3/32" = 1'-0"



02 - EXTERIOR ELEVATION (NORTH WEST)

NEW DEALERSHIP FACING BACK OF SITE SCALE: 3/32" = 1'-0"



01 - EXTERIOR ELEVATION (SOUTH EAST)

NEW DEALERSHIP FACING POLK STREET SCALE: 3/32" = 1'-0"

Order Plans @ WWW.LDILine.com

Revisions:

Number	Date	Description

Project Title:
HYUNDAI SOUTH CHARLOTTE

10618 CADILLAC STREET
PINEVILLE, NC 28134

Project No.: 2539-00

Drawing Title:
BUILDING ELEVATIONS

SET ISSUE DATE
MARCH 4, 2020

Sheet:
A2.1