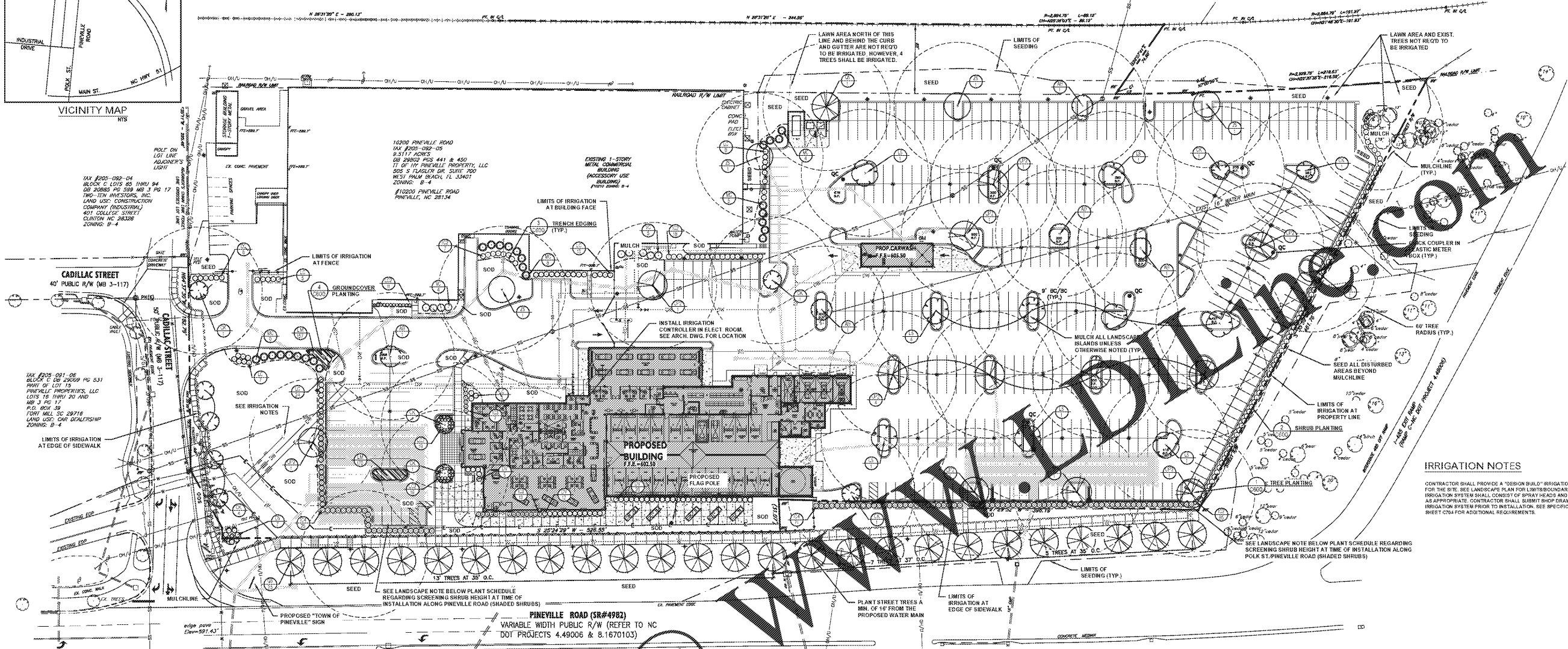


VICINITY MAP
HTS

SOUTHERN RAILWAY - 130' R/W
SEE NC DOT PLANS FOR PROJECT 4.49006 RECORDED
IN STATE HWY BOOK E PAGES 403 AND 404.



IRRIGATION NOTES

CONTRACTOR SHALL PROVIDE A "DESIGN BUILD" IRRIGATION SYSTEM FOR THE SITE. SEE LANDSCAPE PLAN FOR LIMITS/BOUNDARIES. IRRIGATION SYSTEM SHALL CONSIST OF SPRAY HEADS AND DRIP LINES AS APPROPRIATE. CONTRACTOR SHALL SUBMIT SHOP DRAWINGS OF IRRIGATION SYSTEM PRIOR TO INSTALLATION. SEE SPECIFICATIONS ON SHEET C704 FOR ADDITIONAL REQUIREMENTS.

SEE LANDSCAPE NOTE BELOW PLANT SCHEDULE REGARDING SCREENING SHRUB HEIGHT AT TIME OF INSTALLATION ALONG PINEVILLE ROAD (SHADED SHRUBS)

TREES	QTY	BOTANICAL / COMMON NAME	ROOT	CAL	REMARKS	SIZE
AD	15	Asar thymifolium / Winter Holly	3' B & B	2' CAL	FULL	10'-12" HT
CR	1	Cornus kousa / Kousa Dogwood	3' B & B	2' CAL	MATCHED, STRAIGHT	6' B' HT
LE	9	Lonicera xyripetala / "Rokushoba" TM / Sound Locket Seed Gum	3' B & B	2' CAL	FULL	12'-14" H, 6'-8" W
Q2	26	Quercus shumardii / Shumard Red Oak	3' B & B	2' CAL	MATCHED, STRAIGHT	12'-14" H, 6'-8" W
UP2	12	Ulmus parviflora / "Lodestar Elm" / Chinese Elm Tree	3' B & B	2' CAL	FULL	12'-14" H, 6'-8" W
Z2	5	Zakona serrata / "Green Vase" / Sawleaf Zakona	3' B & B	2' CAL	FULL	12'-14" H, 6'-8" W

SHRUBS	QTY	BOTANICAL / COMMON NAME	CONT	REMARKS	HEIGHT	BREADTH
IC1	17	Ilex cornuta / "Burbank Holly" / Dwarf Burford Holly	7 gal	5' O.C.	24-30" HT	24-30"
IC2	16	Ilex cornuta / "Burbank Holly" / Dwarf Burford Holly	3 gal	5' O.C.	4' HT MIN	24-30"
IC3	20	Ilex cornuta / "Soft Touch" / Soft Touch Holly	5 gal	5' O.C.	18-24" HT	18-24"
LC2	49	Leucopetalum chinense / "Darius" / Darius Dwarf Loropetalum	3 gal	3' O.C.	15-18" HT	15-18"
LC	68	Leucopetalum chinense / "Ever Red Sunset" / Ever Red Sunset Loropetalum	5 gal	5' O.C.	24-30" HT	24-30"
MC	26	Myrica caroliniana / Wax Myrtle	7 gal	5' O.C.	24-30" HT	18-24"
VC	9	Viburnum acerifolium / "China" / China Viburnum	7 gal	17' O.C.	24-30" HT	24-30"

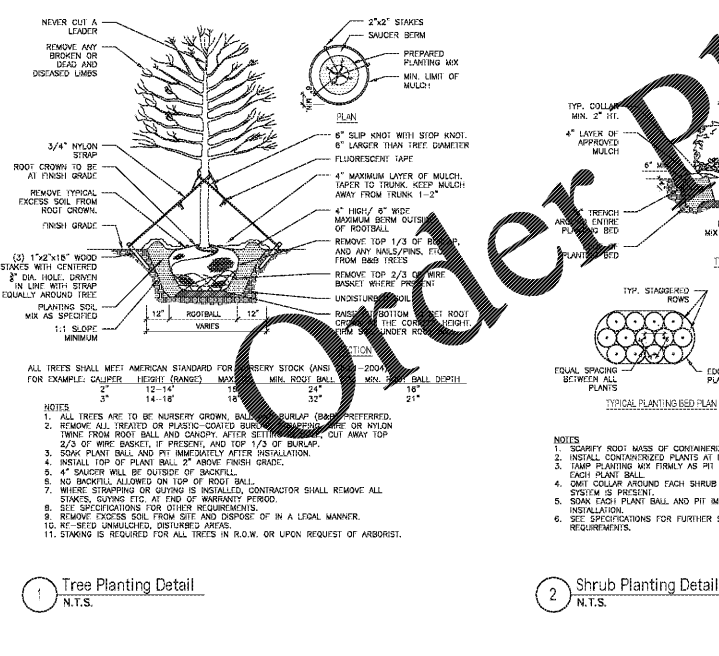
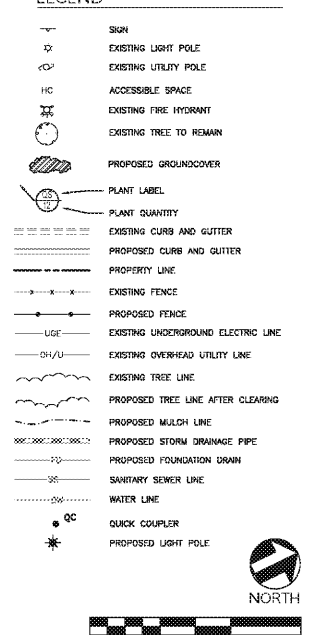
GROUND COVERS	QTY	BOTANICAL / COMMON NAME	CONT	REMARKS	SPACING
LM	200	Lilium muscari / "Big Blue" / Big Blue Lilyturf	1 qt	18" O.C.	18" O.C.

LANDSCAPE NOTES

- MINIMUM TREE SIZE AT PLANTING IS 2" CALIPER AND 8" TALL FOR SINGLE-STEM TREES. ALL MULTI-STEM PLANTS MUST BE TREE FORM, MAXIMUM 3 TO 5 TRUNKS, AND MINIMUM 12" TALL.
 - ALL NEW TREES MUST HAVE STRAIGHT TRUNKS WITH STRONG CENTRAL LEADERS INTACT TO THE TOP OF THE CROWN UNLESS SO SPECIFIED. TREES SHALL BE TYPICAL OF THEIR SPECIES AND VARIETY, HAVE NORMAL GROWTH HABITS, HAVE WELL-DEVELOPED BRANCHES, BE VIGOROUS AND HAVE FIBROUS ROOT SYSTEMS. TREES WITH CO-DOMINANT BRANCHING WILL NOT BE ACCEPTED. TREES THAT HAVE BEEN ANNEALED, TOPPED OR CUT BACK TO MULTIPLE BRANCHING STRUCTURE WILL NOT BE ACCEPTED. TREES SHALL BE FREE OF ABNORMAL DAMAGE, DISEASE, PESTS AND CRACKS. ALL PRUNING CUTS GREATER THAN 2" DIAMETER SHALL HAVE CALLUS TISSUE FORMED PRIOR TO PLANTING. NO PRUNING CUT ON THE TRUNK SHALL BE MORE THAN ONE-HALF THE DIAMETER OF THE CENTRAL LEADER AT THE HEIGHT WHERE THE CUT WAS MADE. ROOT FLARES SHALL BE LOCATED AT GRADE. TREES WITH MORE THAN 2" OF SOIL COVERING THE ROOT BALL FLARE FROM WALL NOT BE ACCEPTED.
 - SIZE OF PLANTS, SPREAD OF ROOTS AND SIZE OF BALLS SHALL BE IN ACCORDANCE WITH ANSI Z601 (LATEST EDITION) AS PUBLISHED BY THE AMERICAN NURSERY & LANDSCAPE ASSOCIATION.
 - ALL TREES OF A PARTICULAR SPECIES AND VARIETY SHALL BE UNIFORM IN SIZE AND CONFIGURATION.
- PLANTING REQUIREMENTS
- PLASTIC HOSE PARTS WILL NOT BE ACCEPTED FOR TREE STAKING. SEE DETAILS AND SPECIFICATIONS FOR APPROVED STAKING METHODS/MATERIALS.
 - ALL STRAPPING AND TOP 1" OF WIRE BASKET AND BURLAP MUST BE CUT AWAY AND REMOVED FROM ROOT BALL WHEN PLANTING.
 - FOR NEW PLANTING AREAS, REMOVE ALL PAVEMENT, GRAVEL, SUB-BASE AND CONSTRUCTION DEBRIS, REMOVE COMPACTED SOIL AND ADD 4" NEW TOPSOIL, OR TILL AND AMEND THE TOP 24" OF EXISTING SOIL TO MEET TOPSOIL PLANTING MIX STANDARDS FOR TREES.
 - ALL SAUCERS SHALL BE SOAKED WITH WATER AND MULCHED IMMEDIATELY FOLLOWING PLANTING.
 - ALL ROOT BALLS FOR SHRUBS & GROUNDCOVERS SHALL BEAR THE SAME RELATIONSHIP TO FINISHED GRADE, AS BORN TO PREVIOUS GROWING CONDITIONS.
 - ALL ROOT BALLS REMOVED FROM CONTAINERS SHALL BE SCARIFIED PRIOR TO BACKFILLING.
 - MULCH A MINIMUM 4 FOOT AREA AROUND EACH TREE AND MULCH A CONTIGUOUS AREA AROUND ALL SHRUB BEDS, AS INDICATED ON THE PLAN. MULCH SHALL BE 3"-4" THICK, MULCH AROUND



LEGEND

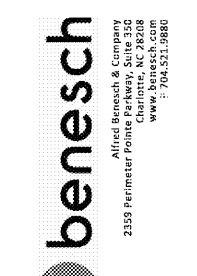


1 Tree Planting Detail
N.T.S.

2 Shrub Planting Detail
N.T.S.

3 Trench Edging Detail
N.T.S.

4 Groundcover Planting Detail
N.T.S.



Affiliated Benesch & Company
2359 Fairmead Pointe
Charlotte, NC 28203
www.benesch.com
704.521.9880

Seals



Corp. NC License: F-1320

Hyundai of South Charlotte
10518 Cadillac Street
Pineville, North Carolina

Project No: 17000070.02
Date: 03.04.2020
Revisions:

Sheet Title:
Landscape Plan

Sheet No:
C600

