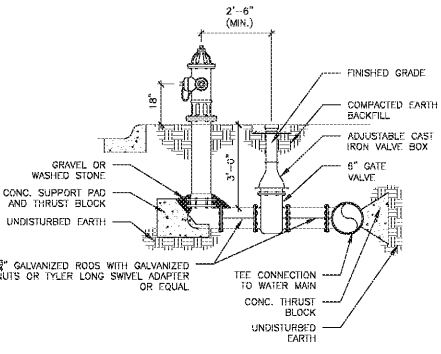


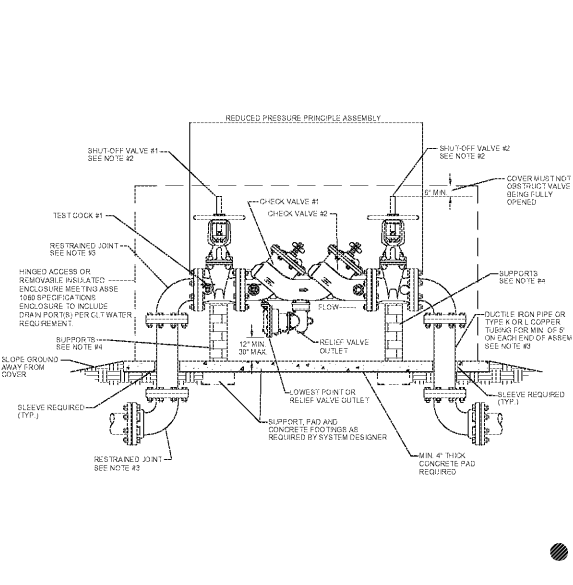
1 Cleanout N.T.B.

NOTE: ENGRAVE "SS" IN SANITARY SEWER PLUG AND ENGRAVE "SD" IN STORM DRAIN PLUG.



- NOTES:
- ON ROADS WITH CURB AND GUTTER, INSTALL HYDRANT 2' FROM BACK OF CURB; ON ROADS WITHOUT CURB AND GUTTER, INSTALL HYDRANT 6' FROM EDGE OF PAVEMENT.
  - OUTLET TO BE TURNED FACING ROADWAY.
  - CONCRETE BLOCKING TO EXTEND TO UNDISTURBED EARTH. SEE DETAIL FOR MINIMUM DIMENSIONS.
  - FIRE HYDRANT TO BE MUELLER CENTURION II OR APPROVED EQUAL.

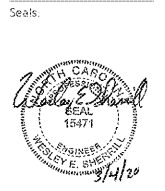
2 Fire Hydrant Assembly N.T.B.



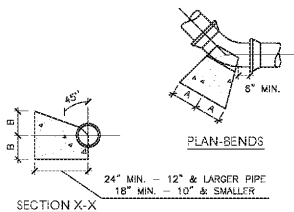
3 2 1/2" - 12" Reduced Pressure Principle Assembly (Above Ground), N.T.B.

- NOTES:
- BACKFLOW PREVENTION ASSEMBLIES (BPA) SHALL CONFORM TO CLT WATER SPECIFICATIONS. SHUTOFF VALVES ARE SPECIFIC TO EACH APPROVED BPA AND NO SUBSTITUTIONS OF SHUTOFF VALVES ARE PERMITTED. REFER TO CLT WATER APPROVED LIST FOR BPA.
  - FIRE LINE SERVICES SHALL HAVE OUTSIDE STEM AND YOKES (DS & Y) HANDHELD OPERATORS OR BUTTERFLY VALVES, AND LISTED ON APPROVED LIST AS FIRE APPROVED. IF SERVING FIRE SPRINKLERS, TAMPER SWITCHES ARE REQUIRED.
  - PIPE MATERIAL AND FITTINGS SHALL BE AS SPECIFIED IN CLT WATER STANDARDS SPECIFICATION. ALL JOINTS SHALL BE RESTRAINED WITH METALLIC RESTRAINTS OR APPROVED EQUAL.
  - SUPPORT OF ASSEMBLY SHALL BE DESIGNED BY OWNER. 8" - 12" SHALL BE SUPPORTED AT EACH VALVE AND SHALL NOT LOOK RELIEF VALVE TO DRAIN PERT.
  - INSULATED ENDOURABLE SHALL BE AS SPECIFIED IN CLT WATER END USE GUIDE INFORMATION. HEATED INSULATED ENDOURABLE ARE REQUIRED FOR FIRE LINE SERVICES. NO INSULATION SHALL BE WAPPED AROUND BPA.
  - ALL LOCATIONS FOR BPA'S REQUIRE CLT WATER APPROVAL AND MUST BE OUTSIDE OF ZONING SET-BACK DIRECTLY BEHIND METER.
  - THERE SHALL BE NO TAPS, PIPING BRANCHES, UNAPPROVED BYPASS PIPING, HYDRANTS, FIRE DEPT. CONNECTION POINTS, OR OTHER WATER-LEAKING APPURTENANCES CONNECTED TO THE SUPPLY LINE BETWEEN ANY WATER METER AND ITS CLT WATER-REQUIRED BACKFLOW PREVENTER.
  - SUCH CLT WATER-REQUIRED BPA'S ARE REQUIRED TO BE TESTED BY A CLT WATER APPROVED CERTIFIED TESTER PRIOR TO PLACING THE WATER SYSTEM IN SERVICE. TEST RESULTS SHALL BE SUBMITTED TO CLT WATER WITHIN 30 DAYS AND TESTED ANNUALLY THEREAFTER. SUBMITTING RESULTS TO CLT WATER.
  - ALL INSTALLATIONS INTENDED FOR ADDRESSING CLT WATER REQUIREMENTS, REQUIRE PRIOR APPROVAL FROM THE APPROPRIATE CLT WATER BACKFLOW INSPECTOR.

SCALE: CHARLOTTE WATER STANDARD DETAILS ASSEMBLY (N.T.B.) 2 1/2" - 12" ABOVE GROUND



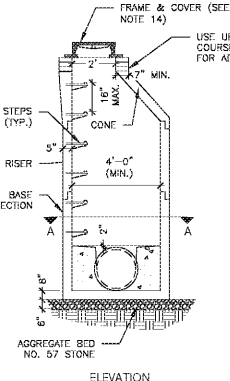
Corp. NC License: F-1320



SIZE	1/4 BENDS		1/8 BENDS		TEES		PLUGS		
	A	B	A	B	A	B	C	D	
2 1/2" - 4"	16"	10"	8"	10"	8"	10"	12"	10"	11"
6"	22"	13"	12"	8"	10"	13"	18"	12"	29"
10"	28"	17"	14"	12"	10"	15"	18"	20"	34"
12"	34"	21"	15"	11"	11"	18"	24"	16"	41"
14"	35"	24"	18"	14"	12"	20"	23"	18"	46"
18"	36"	27"	21"	17"	12"	24"	24"	20"	54"

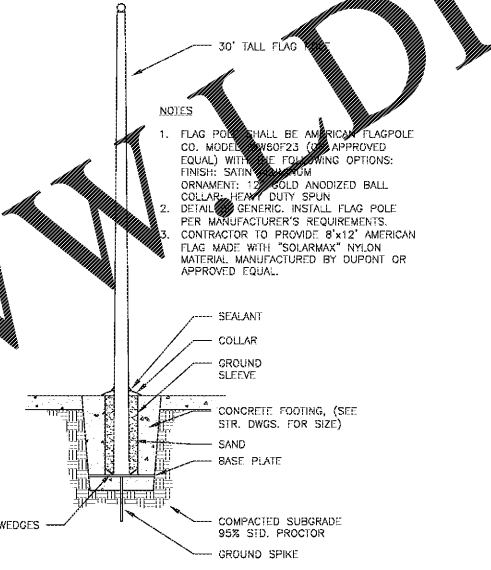
NOTE: BASED ON 100 PSI STATIC PRESSURE PLUS AWWA WATER HAMMER. ALL BEARING SURFACES TO BE CARRIED TO UNDISTURBED GROUND.

4 Concrete Thrust Block N.T.B.



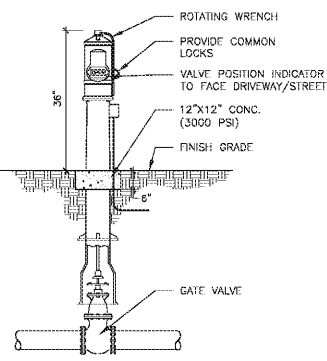
- NOTES:
- MANHOLE TO CONFORM TO ASTM C478, EXCEPT AS MODIFIED BELOW.
  - CARE MUST BE TAKEN TO FORM A SMOOTH FINISHED TROUGH FROM ENTRANCE PIPES TO EXIT PIPE, AND IN CURVED MANHOLES THE TROUGH MUST BE A SMOOTH CIRCULAR ARC TANGENT TO THE INSIDE WALLS OF THE PIPES AT THEIR ENDS.
  - PRE-CAST MANHOLE SHALL BE DESIGNED TO SUPPORT AN H-20 WHEEL LOAD.
  - ALL JOINTS SHALL CONFORM TO ASTM C443.
  - ALL MANHOLES OVER 3'-4" IN DEPTH SHALL BE PROVIDED WITH STEPS 1'-4" ON CENTERS. STEPS SHALL BE IN ACCORDANCE WITH THE PROJECT SPECIFICATIONS.
  - ALL PIPE OPENINGS TO BE NO GREATER THAN O.D. OF PIPE AND ADDITIONALLY REINFORCED WITH A MINIMUM OF 620 S50. 5% OF STEEL AT 80 DEGREES. PIPE TO BE CENTERED IN OPENINGS. ADDITIONAL REINFORCING NOT REQUIRED FOR CORRO OPENINGS.
  - ALL SURFACES SHALL BE SMOOTH EVEN TEXTURED WITH A MINIMUM OF HONEYCOMB, FINS AND OTHER IMPERFECTIONS.
  - RAWSET MASONRY TIES EVERY 12 INCHES.
  - ALL CONCRETE TO BE 3000 P.S.I.
  - INVERTS IN 6" DIAMETER MANHOLES TO BE OVER WIDEST SHELF.
  - STEPS IN 6" DIAMETER MANHOLES TO BE OVER WIDEST SHELF.
  - LIFTING HOLES SHALL BE PLUGGED WITH GLASSBORO FIBER TO BACKFILLING.
  - STRAIGHT WALL OF MANHOLE TO BE LOCATED INFLUENT PERIPHERY OR OVER WIDEST SHELF.
  - THE FRAME AND COVER SHALL BE SUPER CAST IN MODEL #MH-50-2010, LUNA JORDAN IRON WORKS MODEL: 00100554 (SOLID) OR 00100555 (VENTED), OR U.S. FOUNDRY JUST 200-A OR APPROVED EQUAL. COVER SHALL BE LABELED "SANITARY SEWER".
  - THE TEXT "WARRANTY NOT WATER" SHALL BE EMBOSSED IN THE MANHOLE COVER.

5 Precast Sanitary Sewer Manhole N.T.B.

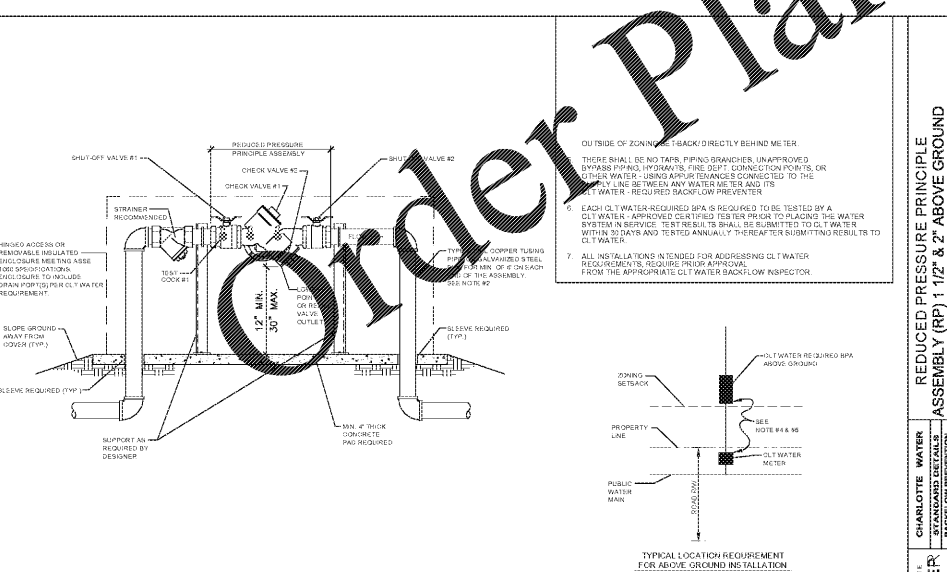


6 Flag Pole Detail N.T.B.

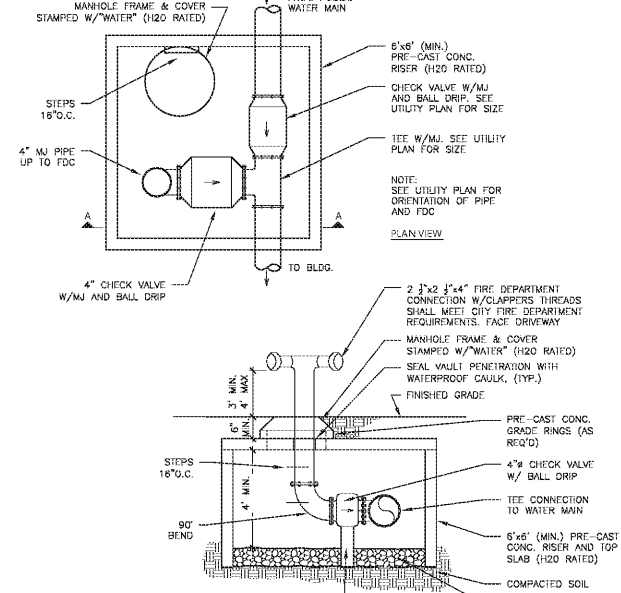
- NOTES:
- POST INDICATOR VALVE SHALL BE MUELLER CO. MODEL #A-20804 OR APPROVED EQUAL.
  - PROVIDE SUPERVISORY SWITCH, ENUNCIATED TO FIRE ALARM PANEL.



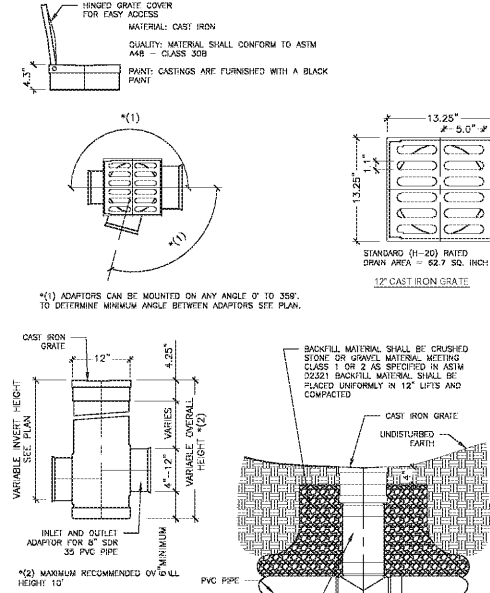
7 Post Indicator Valve N.T.B.



8 1 1/2" - 2" Reduced Pressure Principle Assembly (Above Ground), N.T.B.



9 Fire Department Connection N.T.B.



10 12" Area Drain Detail N.T.B.

Order Plans @ WWW.DIline.com

Hyundai of South Charlotte  
10518 Cadillac Street  
Pineville, North Carolina

Project No: 17000070.02  
Date: 03.04.2020  
Revisions:

Sheet Title:  
Site Construction Details

Sheet No:  
**C503**