

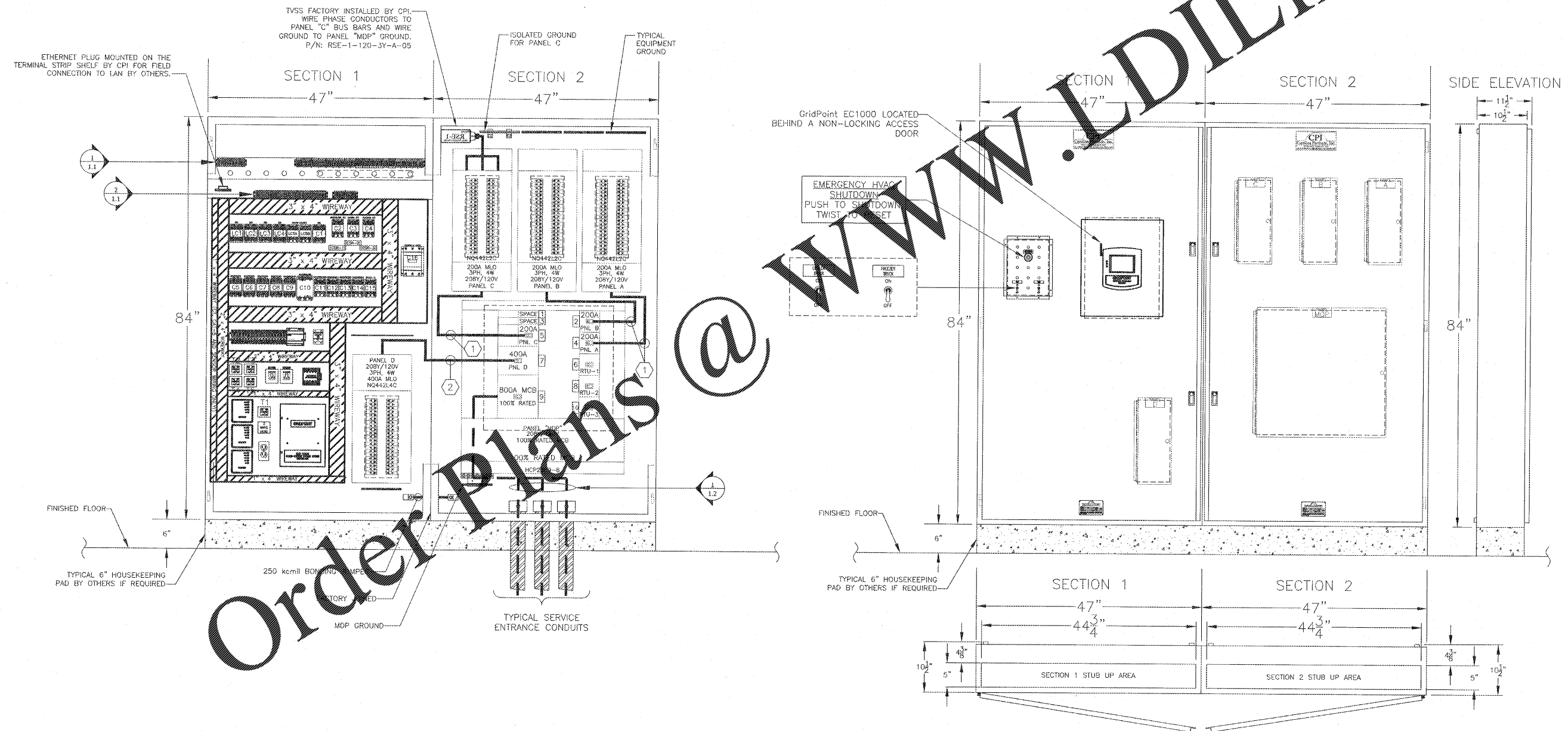
WIRE LEGEND

FACTORY WIRING: _____

FIELD WIRING: - - - - -

FACTORY WIRED FEEDER SCHEDULE

#	(# OF CONDUCTORS) SIZE
1	(4) #3/0 AWG
2	(8) #3/0 AWG



Order Plans @

WWW.LDILine.com

CAROLINA PRODUCTS, INC.
1132 PRO AM DR.
CHARLOTTE, NC 28211
PH. (704)364-9029, FX. (704)367-1215

CPI
CAROLINA PRODUCTS, INC.
CONTROL AND POWER INTEGRATION

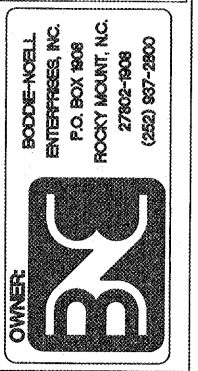
THIS DRAWING IS THE PROPERTY OF CAROLINA PRODUCTS, INC. AND MAY NOT BE USED OR REPRODUCED WITHOUT THE WRITTEN PERMISSION OF CAROLINA PRODUCTS, INC.

REVISION
REVISION
REVISION

HARDEE'S: BODDIE NOELL ENTERPRISES
DISPUTANTA, VA (PRINCE GEORGE)
INTERIOR/EXTERIOR VIEWS & ROUGH-IN DETAILS

CPI PROJECT # 24588A
CPI DRAWING # BNE-24588A
SHEET: 1.0
DATE: 8/19/19
DRAWN BY: AJW

FOR REFERENCE ONLY



REVISIONS

NO.	DESCRIPTION	DATE

ELEVATIONS, DETAILS & PANELS

DATE: 9-4-2019
SHEET NUMBER: **CPI-1.0**

1 - CPI SYSTEM OVERVIEW-INTERIOR/EXTERIOR VIEW & ROUGH-IN DIMENSIONS