

Table with 15 columns: CKT #, DESCRIPTION, NOTE, BREAKER POLE AMP., LOAD (KVA), A, B, C, LOAD BREAKER (KVA) AMP. POLE, NOTE, DESCRIPTION, CKT #. Includes equipment like EL2 - ICE CREAM 1, E54 - FRENCH FRY WARMER, etc.

Summary table for Panel A: VOLTAGE 208Y/120V, PHASE 3, WIRE 4, MAINS MLO, RATING 200 (AMPS), WITH I.G. BAR NO.

Table with 15 columns: CKT #, DESCRIPTION, NOTE, BREAKER POLE AMP., LOAD (KVA), A, B, C, LOAD BREAKER (KVA) AMP. POLE, NOTE, DESCRIPTION, CKT #. Includes equipment like E90 FRYER BATTERY, E44, #10 G. in (1) 1-1/4" C. EA.

Summary table for Panel B: VOLTAGE 208Y/120V, PHASE 3, WIRE 4, MAINS MLO, RATING 200 (AMPS), WITH I.G. BAR NO.

Table with 15 columns: CKT #, DESCRIPTION, NOTE, BREAKER POLE AMP., LOAD (KVA), A, B, C, LOAD BREAKER (KVA) AMP. POLE, NOTE, DESCRIPTION, CKT #. Includes equipment like E50 FRYER BATTERY, E41, #12 G. in (1) 3/4" C. EA.

Summary table for Panel C: VOLTAGE 208Y/120V, PHASE 3, WIRE 4, MAINS MLO, RATING 200 (AMPS), WITH I.G. BAR YES.

Table with 15 columns: CKT #, DESCRIPTION, NOTE, BREAKER POLE AMP., LOAD (KVA), A, B, C, LOAD BREAKER (KVA) AMP. POLE, NOTE, DESCRIPTION, CKT #. Includes equipment like EF-1 FLA: 1.9, E70 - WALK-IN FRZL COMP. (2 HP).

Summary table for Panel D: VOLTAGE 208Y/120V, PHASE 3, WIRE 4, MAINS MLO, RATING 200 (AMPS), WITH I.G. BAR NO.

Table with 15 columns: CKT #, DESCRIPTION, NOTE, BREAKER POLE AMP., LOAD (KVA), A, B, C, LOAD BREAKER (KVA) AMP. POLE, NOTE, DESCRIPTION, CKT #. Includes equipment like EF-2 FLA: 1.9, E70 - WALK-IN FRZL COMP. (2 HP).

Summary table for Panel E: VOLTAGE 208Y/120V, PHASE 3, WIRE 4, MAINS MLO, RATING 200 (AMPS), WITH I.G. BAR NO.

Table with 15 columns: CKT #, DESCRIPTION, NOTE, BREAKER POLE AMP., LOAD (KVA), A, B, C, LOAD BREAKER (KVA) AMP. POLE, NOTE, DESCRIPTION, CKT #. Includes equipment like E70 - WALK-IN FRZL COMP. (2 HP), E70 - WALK-IN FRZL COMP. (2 HP).

Summary table for Panel F: VOLTAGE 208Y/120V, PHASE 3, WIRE 4, MAINS MLO, RATING 200 (AMPS), WITH I.G. BAR NO.

Table with 15 columns: CKT #, DESCRIPTION, NOTE, BREAKER POLE AMP., LOAD (KVA), A, B, C, LOAD BREAKER (KVA) AMP. POLE, NOTE, DESCRIPTION, CKT #. Includes equipment like LTG - KITCHEN/STORAGE, LTG - KITCHEN/OFFICE.

Summary table for Panel G: VOLTAGE 208Y/120V, PHASE 3, WIRE 4, MAINS MLO, RATING 200 (AMPS), WITH I.G. BAR YES.

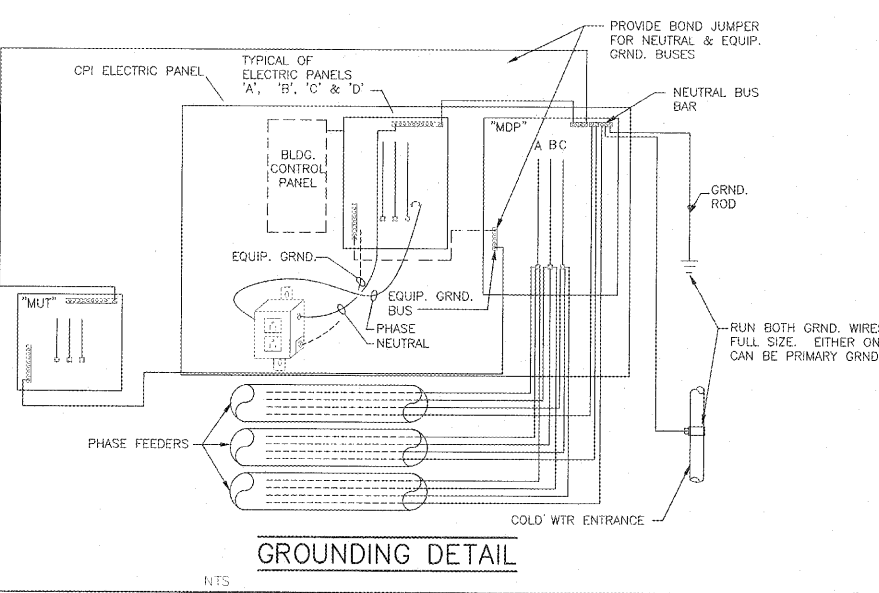
Table with 15 columns: CKT #, DESCRIPTION, NOTE, BREAKER POLE AMP., LOAD (KVA), A, B, C, LOAD BREAKER (KVA) AMP. POLE, NOTE, DESCRIPTION, CKT #. Includes equipment like E70 - WALK-IN FRZL COMP. (2 HP), E70 - WALK-IN FRZL COMP. (2 HP).

Summary table for Panel H: VOLTAGE 208Y/120V, PHASE 3, WIRE 4, MAINS MLO, RATING 200 (AMPS), WITH I.G. BAR NO.

Table with 15 columns: CKT #, DESCRIPTION, NOTE, BREAKER POLE AMP., LOAD (KVA), A, B, C, LOAD BREAKER (KVA) AMP. POLE, NOTE, DESCRIPTION, CKT #. Includes equipment like E70 - WALK-IN FRZL COMP. (2 HP), E70 - WALK-IN FRZL COMP. (2 HP).

Summary table for Panel I: VOLTAGE 208Y/120V, PHASE 3, WIRE 4, MAINS MLO, RATING 200 (AMPS), WITH I.G. BAR NO.

E.C. SHALL VERIFY WITH LAHJ AND LOCAL UTILITY CONSTRUCTION GUIDELINES TO ENSURE FULL COMPLIANCE WITH ELECTRICAL SERVICE REQUIREMENTS... NOTE: SEE SHEETS CPI-1.0 THRU CPI-2.3 FOR CPI INFORMATION RELATED TO WIRING OF CONTROLS & ENERGY MANAGEMENT.



POWER LOAD SUMMARY (KVA) table showing totals for kitchen, hvac, lighting, and other loads across various panels.

FAULT CURRENT CALCULATIONS table with columns for Basic Assumptions, Short Circuit Current, Wire Size, and Fault Current Calculation Notes.