

PRE-READER BOARD FOOTING

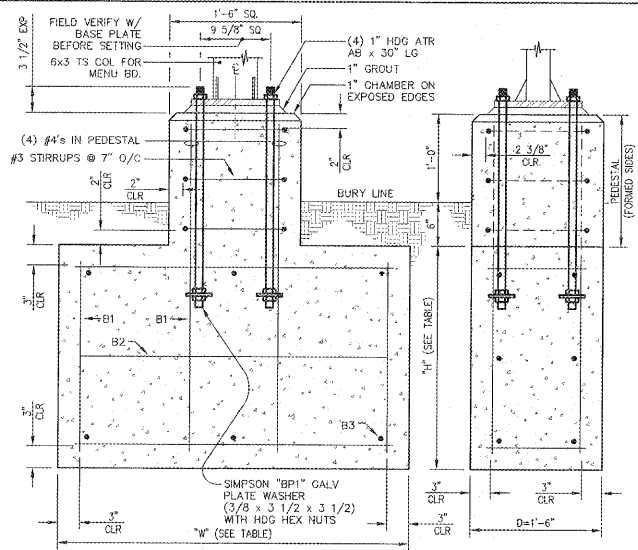
SCALE: 1"=1'-0"

| DESIGN WIND SPEED/EXPOSURE (MPH) | FACTORED PRESSURE (MPH) | W (FT) | H (FT) | BURY DEPTH D (FT) (H+6") | B1 (VERT) | B2 (HOR) | B3 (TIES) |
|----------------------------------|-------------------------|--------|--------|--------------------------|-----------|----------|-----------|
| 150/D | 112.1 | 4.0 | 2.5 | 3.0 | 4#4's | 3#4's | 4#3's |
| 130/D | 87.6 | 3.5 | 2.5 | 3.0 | 3#4's | 3#4's | 3#3's |
| 120/C | 54.7 | 2.5 | 2.5 | 3.0 | 3#4's | 2#4's | 3#3's |
| 110/C | 46 | 2.5 | 2.0 | 2.5 | 3#4's | 2#4's | 3#3's |
| 100/C | 38 | 2.5 | 2.0 | 2.5 | 3#4's | 2#4's | 3#3's |
| 90/C | 30.8 | 2.0 | 2.0 | 2.5 | 3#4's | 2#4's | 2#3's |
| 80/B | 14.2 | 2.0 | 1.5 | 2.0 | 3#4's | 2#4's | 2#3's |

REFERENCE PRE-ORDER MENU BOARD & MENU BOARD GENERAL NOTES - THIS SHEET

PRE-READER BOARD FOOTING

SCALE: 1/4" = 1'-0"



MENU BOARD FOOTING

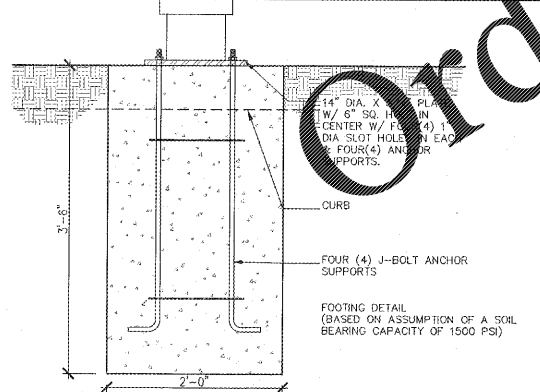
SCALE: 1"=1'-0"

| DESIGN WIND SPEED/EXPOSURE (MPH) | FACTORED PRESSURE (MPH) | W (FT) | H (FT) | BURY DEPTH D (FT) (H+6") | B1 (VERT) | B2 (HOR) | B3 (TIES) |
|----------------------------------|-------------------------|--------|--------|--------------------------|-----------|----------|-----------|
| 150/D | 112.1 | 5.0 | 3.5 | 4.0 | 6#4's | 3#4's | 4#3's |
| 130/D | 87.6 | 4.5 | 3.5 | 4.0 | 5#4's | 3#4's | 4#3's |
| 120/C | 54.7 | 3.5 | 3.0 | 3.5 | 4#4's | 3#4's | 3#3's |
| 110/C | 46 | 3.0 | 3.0 | 3.5 | 4#4's | 3#4's | 3#3's |
| 100/C | 38 | 3.0 | 2.5 | 3.0 | 4#4's | 3#4's | 3#3's |
| 90/C | 30.8 | 2.75 | 2.5 | 3.0 | 3#4's | 3#4's | 2#3's |
| 80/B | 14.2 | 2.5 | 2.0 | 2.5 | 3#4's | 2#4's | 2#3's |

REFERENCE PRE-ORDER MENU BOARD & MENU BOARD GENERAL NOTES - THIS SHEET

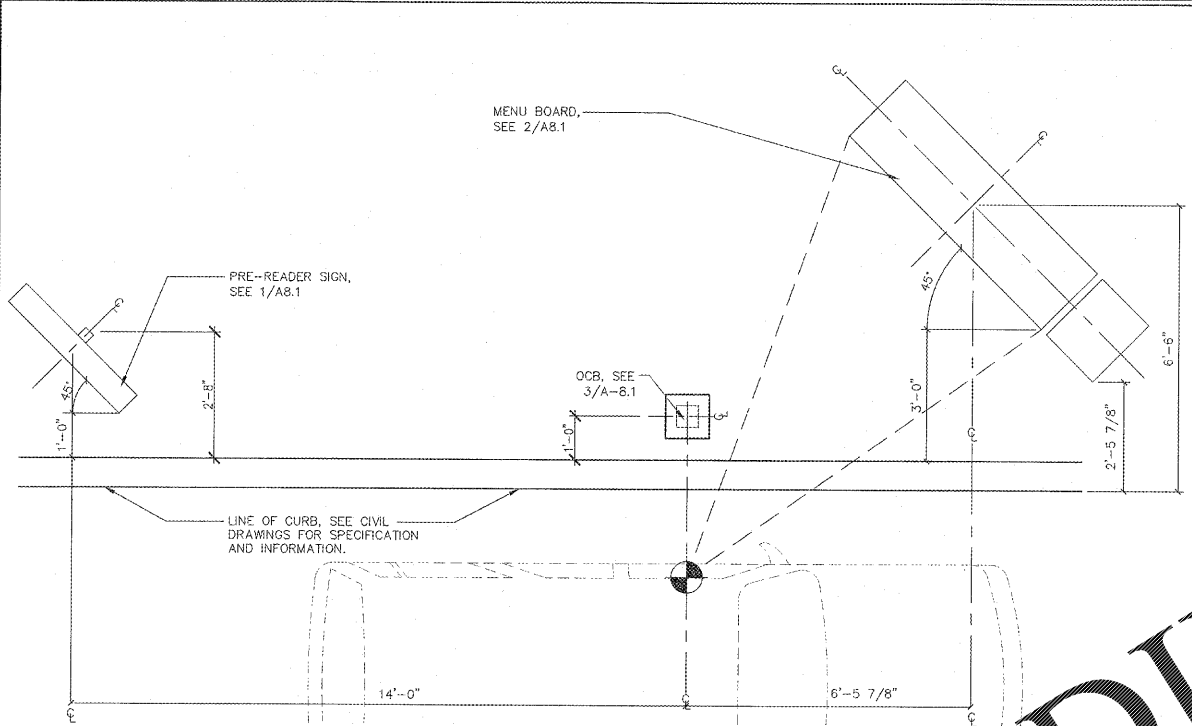
MENU BOARD FOOTING

SCALE: 1"=1'-0"



ORDERING CANOPY BASE

SCALE: 1"=1'-0"



MENUBOARD LAYOUT • DRIVETHRU

GENERAL

- WHERE A SECTION OR DETAIL IS SHOWN FOR ONE CONDITION, IT SHALL APPLY TO ALL LIKE AND SIMILAR CONDITIONS.
- SHOP DRAWINGS: THE CONTRACTOR SHALL COORDINATE THE CIVIL AND ELECTRICAL REQUIREMENTS WITH THE FOUNDATION PLAN/DRAWINGS INCLUDING THE LOCATION OF MISCELLANEOUS ITEMS AFFECTING THE STRUCTURAL WORK. PROMPTLY NOTIFY THE ENGINEER OF ANY DISCREPANCIES/CONFLICTS OR OMISSIONS.
- THE SHOP DRAWINGS SHALL BE REVIEWED BY THE CONTRACTOR AND SUBCONTRACTOR PRIOR TO BEING SUBMITTED TO THE ENGINEER FOR APPROVAL.
- SPECIAL INSPECTIONS: NOT REQUIRED.

FOUNDATIONS

- SOIL DESIGN BEARING VALUE - 1500 PSF (TO BE FIELD VERIFIED IF QUESTIONABLE)
- FOUNDATIONS SHALL BE PLACED ONLY ON APPROVED NATURAL UNDISTURBED SOIL STRATA OR ON PROPERLY PLACED ENGINEERED CONTROLLED COMPACTED FILL UNDER THE SUPERVISION OF THE GEOTECHNICAL LABORATORY.
- FOOTING EXCAVATIONS SHALL BE APPROVED BY THE PROJECT ENGINEER OR THE SOIL DESIGNER. A GEOTECHNICAL LABORATORY REPORT AND FOUNDING FOOTING CONCRETE, IF PERMITTED BY A GEOTECHNICAL ENGINEER, THE GEOTECHNICAL LABORATORY/ENGINEER SHALL PROVIDE ALL ITS OWN TESTS TO THE ENGINEER FOR VERIFICATION AND RECORD.
- THE CONTRACTOR SHALL TAKE ALL PRECAUTIONS NECESSARY TO PREVENT STORMWATER FROM ENTERING FOOTING EXCAVATIONS. ALL WATER SHALL BE REMOVED BEFORE DEPOSITING CONCRETE. CONCRETE SHALL NOT BE PLACED ON SOFT, SATURATED SOIL.

CONCRETE

- CONCRETE SHALL DEVELOP THE FOLLOWING MINIMUM COMPRESSIVE STRENGTHS AT 28 DAYS:
 - A) FOOTINGS - 3000 PSI
 - B) PEDESTALS - 3000 PSI
- CONCRETE FOR FOOTINGS/PEDESTALS, SHALL BE REGULAR STONE CONCRETE.
- ALL CONCRETE WORK SHALL CONFORM TO "BUILDING CODE REQUIREMENTS FOR REINFORCED CONCRETE," ACI 318.
- OBSERVE ALL AND STRICTLY FOLLOW ALL ACI 305 AND 306 REQUIREMENTS RESPECTIVELY FOR PROTECTION OF CONCRETE IN HOT AND COLD WEATHER.
- ALL CONCRETE WORK SHALL BE PROPERLY CURED IN CONFORMANCE WITH ACI 308.
- CHAMFER EXPOSED EDGES AND CORNERS OF CONCRETE 1" UNLESS OTHERWISE NOTED.
- THE SLUMP OF CAST-IN-PLACE CONCRETE SHALL NOT EXCEED 4 INCHES WITHOUT A HIGH RANGE WATER REDUCING ADMIXTURE. THE SLUMP OF CAST-IN-PLACE CONCRETE WITH THE USE OF A HIGH RANGE WATER REDUCING ADMIXTURE SHALL NOT EXCEED 8 INCHES. ALL CONCRETE EXPOSED TO WEATHER SHALL BE AIR-ENTRAINED 5% (TO MAXIMUM OF 7%). ENTRAPPED AIR SHALL NOT EXCEED 3%.
- STEEL CLEARANCES: SEE REINFORCING STEEL, ITEM 4.

REINFORCING STEEL

- BARS SHALL BE ROLLED FROM NEW BILLET-STEEL CONFORMING TO SPECIFICATION FOR DEFORMED BILLET-STEEL BARS FOR CONCRETE REINFORCEMENT, ASTM A615, GRADE 60.
- DETAIL AND FABRICATE REINFORCING STEEL IN ACCORDANCE WITH "MANUAL OF STANDARD PRACTICES FOR DETAILING REINFORCED CONCRETE STRUCTURES," ACI 318.
- REINFORCING STEEL SHALL BE IN PLACE AND REVIEWED BY THE PROJECT ENGINEER PRIOR TO PLACING CONCRETE.
- UNLESS OTHERWISE NOTED IN THE DRAWINGS REBAR SHALL HAVE THE FOLLOWING MINIMUM CLEARANCES FROM THE FACE OF CONCRETE:
 - A) FOOTINGS - 3" WITH EARTH FORMS; 2" WITH REMOVABLE FORMS.
 - B) PEDESTALS - 2" TO TIES
 - C) PERMIT SHOP DRAWINGS FOR APPROVAL PRIOR TO PROVISION.

DESIGN CRITERIA AND GOVERNING NOTES:

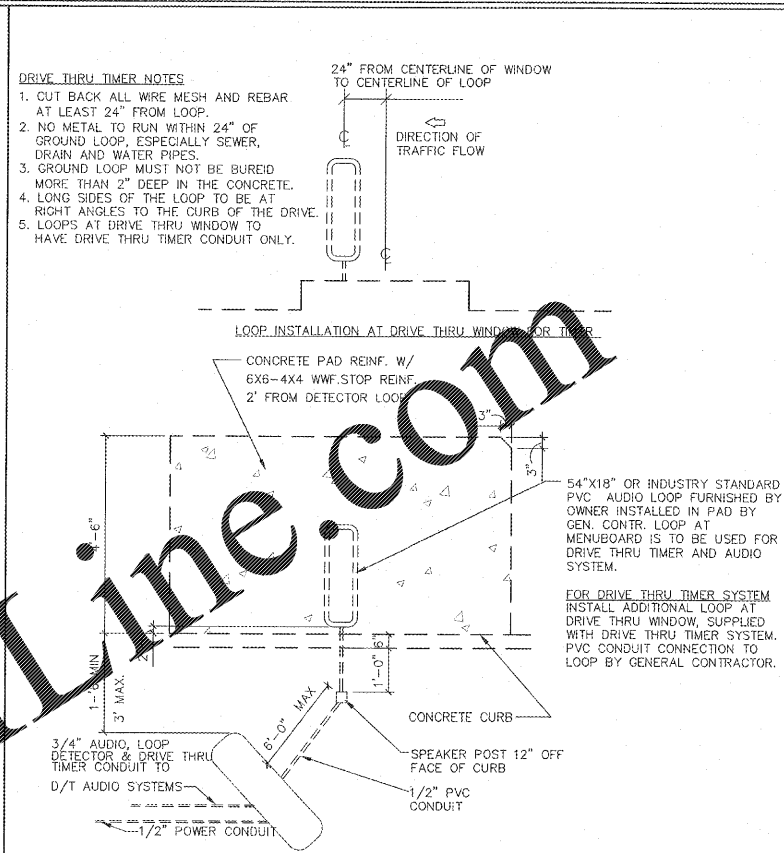
- CONFORM TO THE REQUIREMENTS OF LATEST STATE AND LOCAL CODES, AS APPLICABLE.
- 2010 EDITION OF THE AMERICAN SOCIETY OF CIVIL ENGINEERS (ASCE 7-10), "MINIMUM LOADS FOR BUILDINGS AND OTHER STRUCTURES."
- THIRTEENTH EDITION OF THE AMERICAN INSTITUTE OF STEEL CONSTRUCTION (AISC), "STEEL CONSTRUCTION MANUAL."
- LATEST EDITION OF THE AMERICAN CONCRETE INSTITUTE (ACI 318), "BUILDING CODE REQUIREMENTS FOR STRUCTURAL CONCRETE."
- LATEST EDITION OF THE AMERICAN STANDARDS OF TESTING OF MATERIALS (ASTM), "STANDARDS IN BUILDING CODES", VOLUME I AND II.
- LATEST EDITION OF THE AMERICAN WELDING SOCIETY (AWS), "STRUCTURAL WELDING CODE."
- LATEST EDITION OF THE OCCUPATIONAL SAFETY AND HEALTH ADMINISTRATION (OSHA) STANDARDS.

EXISTING CONDITIONS

- THE CONTRACTOR SHALL BE RESPONSIBLE FOR REVIEWING ALL EXISTING JOB CONDITIONS. ANY ADVERSE EXISTING CONDITIONS AFFECTING WORK SHOWN ON THESE DRAWINGS SHALL BE BROUGHT TO THE ATTENTION OF THE ENGINEER FOR POSSIBLE CLARIFICATION OF RECONCILIATION.

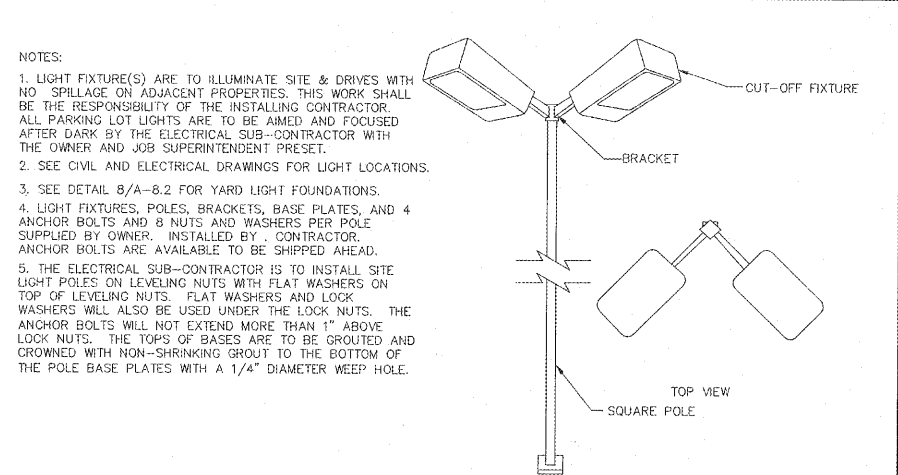
PRE-ORDER MENU BOARD AND MENU BOARD GENERAL NOTES

SCALE: N.T.S.



DETECTOR LOOP SCHEMATIC

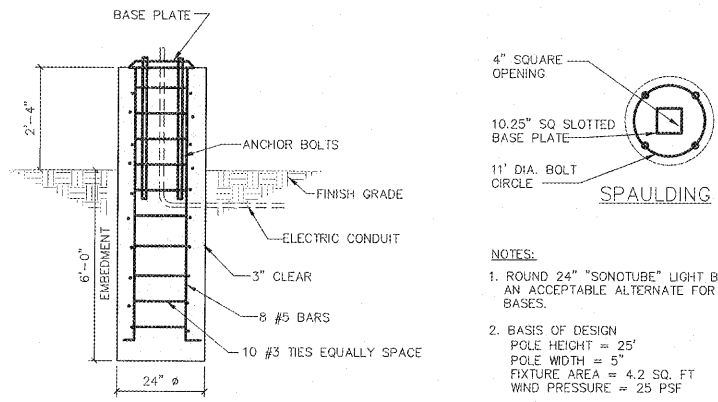
SCALE: 1/2" = 1'-0"



YARDLIGHT ELEVATION

FOR REFERENCE ONLY. REFER TO CIVIL DRAWINGS FOR ACTUAL CONDITIONS & SPECIFICATIONS

SCALE: N.T.S.



YARDLIGHT FOOTING DETAIL

FOR REFERENCE ONLY. REFER TO CIVIL DRAWINGS FOR ACTUAL CONDITIONS & SPECIFICATIONS

SCALE: 1/2" = 1'-0"

NRD national restaurant designers
ARCHITECTS & ENGINEERS
3005 BIRMINGHAM HILL BLVD. SUITE 105
MORRISVILLE, NORTH CAROLINA 27560
PH: 919 544 7251 FAX: 919 544 9399
A Division of LMHT Associates

COMMONWEALTH OF VIRGINIA
Professional Seal
Name: David L. S. [Signature]
Lic. No. [Number]

Handeen
ENGINEERING & ARCHITECTURE
ONE WOOD PROTOTYPE REVERSE
LARGE DINING ROOM - BN2016 LDR
COUNTY DRIVE
DEPT. VA. 24842

BODDE-NOELL
ENTRUSTERS, INC.
P.O. BOX 1808
ROCKY MOUNT, NC
27802-1808
(919) 907-2800

| NO. | DATE | DESCRIPTION |
|-----|------|-------------|
| | | |
| | | |
| | | |

DRIVE-THRU DETAILS

DATE: 9-4-2019

SHEET NUMBER:

A-8.1