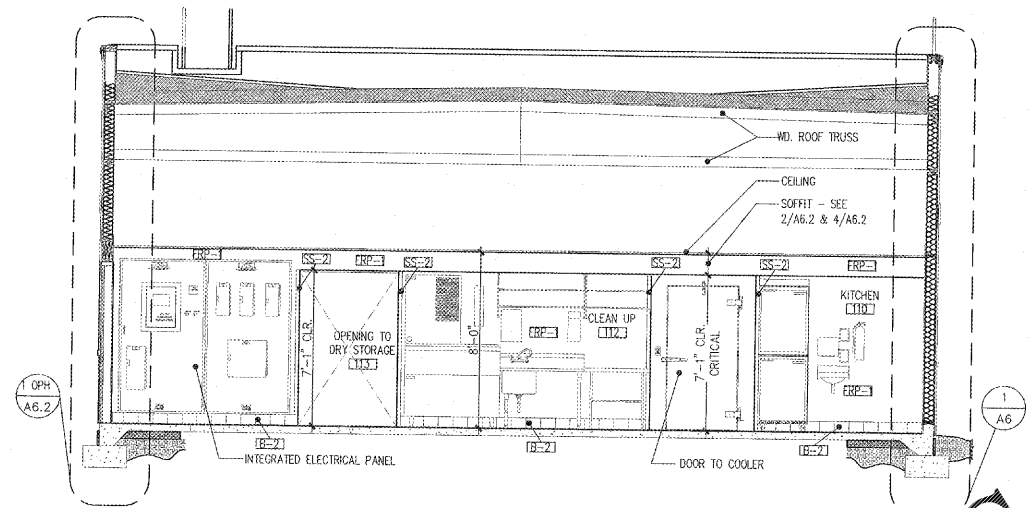


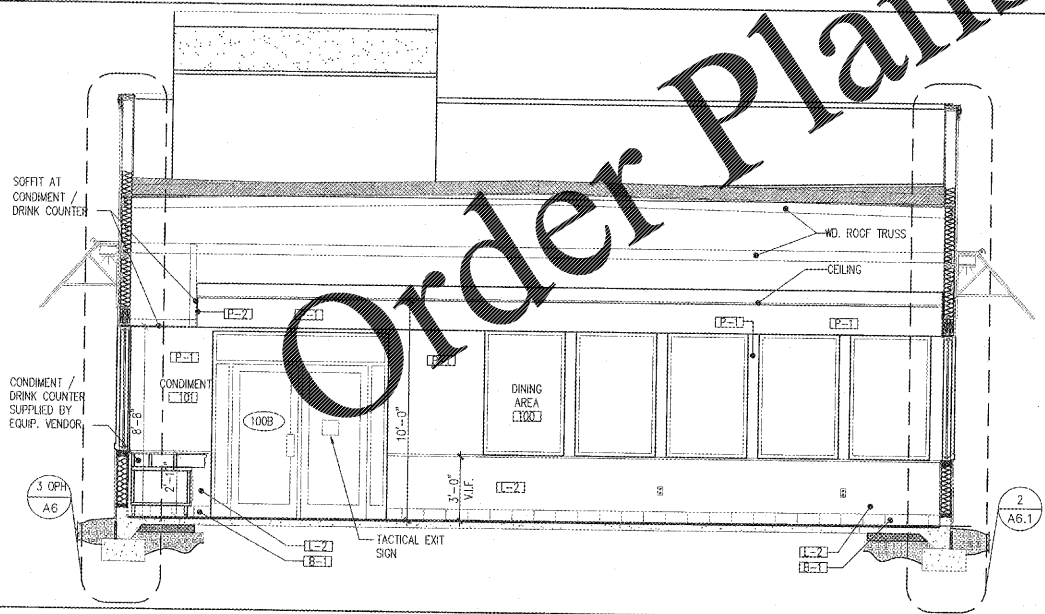
INTERIOR ELEVATION / BLDG. SECTION

SCALE: 1/4" = 1'-0" 1



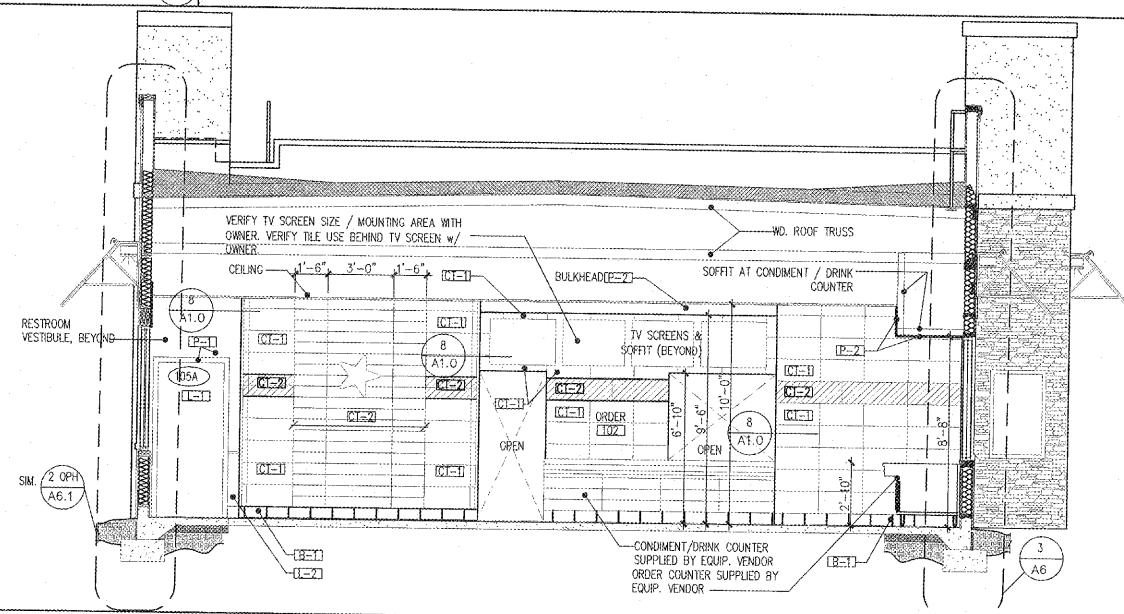
INTERIOR ELEVATION / BLDG. SECTION

SCALE: 1/4" = 1'-0" 2



INTERIOR ELEVATION / BLDG. SECTION

SCALE: 1/4" = 1'-0" 3



INTERIOR ELEVATION / BLDG. SECTION

SCALE: 1/4" = 1'-0" 4

GENERAL NOTES:

1. REFER TO SHEET A1.1 FOR INTERIOR FINISHES & LOCATION MARKERS.
2. REFER TO SHEET Q100 FOR EQUIPMENT INFORMATION.

NRD Project # 18228

**NRD** National Restaurant Consultants  
 ARCHITECTS & ENGINEERS  
 5050 CARVERWOOD MILL BLVD., SUITE 105  
 MORGANTHAU, NORTH CAROLINA 27659  
 PH: 919.544.7251 FAX: 919.544.6329  
 A Division of LHM Associates

Professional Engineer Seal for James Davis, License No. 0401018219, State of Virginia.

**Star Hardware**  
 CALABRESI'S HARDWARE  
 ONE WOOD PROTOTYPE REVERSE  
 LARGE DINING ROOM-EN2016 LDR  
 COUNTY DRIVE  
 DUMFRIES, VA 23042

OWNER: **BZ**

BODDIE-NOELL ENTERPRISES, INC.  
 P.O. BOX 8008  
 ROCKY MOUNT, N.C. 27802-8008  
 (252) 967-2800

NO.	REVISIONS	DATE

INTERIOR ELEVATIONS / SECTIONS

DATE: 9-4-2019

SHEET NUMBER: **A-5.0**

www.LDILine.com @