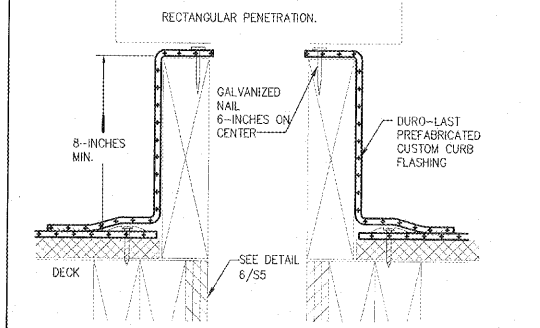


DETAIL - UTILITY RM-C/F BOX 1/2" = 1'-0" 2



NOTE: PERIMETER FASTENING OF THE DECK MEMBRANE WILL BE THE SAME FASTENING PATTERN AS THE FIELD MEMBRANE, MAX. 18-INCHES ON CENTER, AND NO LESS THAN ONE FASTENER PER SIDE.

SCALE: 1/4" = 1'-0" 1 TYP. RECTANG. PENETRATION N.T.S. 3

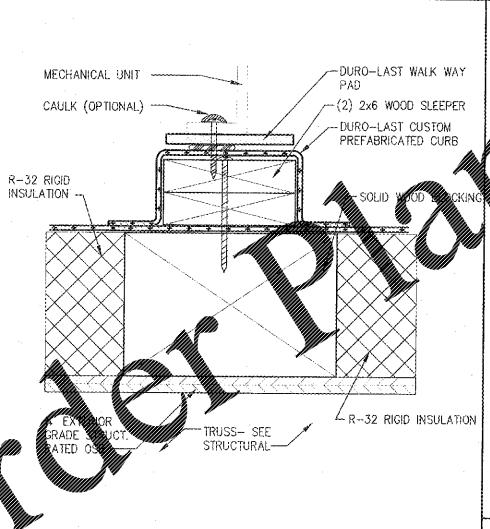
ROOF PLAN

GENERAL NOTES

- THIS PLAN IS DRAWN FOR A TRANE HVAC SYSTEM. COORDINATE ALL ROOF OPENINGS W/HVAC CONTRACTOR. PROVIDE CONTINUOUS SHIMS TO LEVEL.
  - MIN. ROOF SLOPE SHALL BE 1/4" PER 1'-0".
- MINIMUM ROOF AND WALL DESIGN LOADS:  
 A. SEE STRUCTURAL SHEETS FOR ALL LOADING AND WIND SPEED INFORMATION.  
 B. EQUIPMENT LOADS: FOR ROOF MOUNTED EQUIPMENT NOT SHOWN SEE DWG M-1.

KEY NOTES

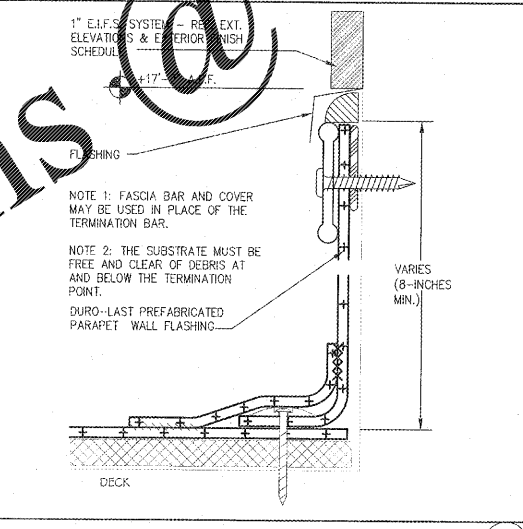
- PROVIDE 2 - 2x8 BLOCKING AROUND ALL ROOF DECK OPENINGS & UNDER ROOF CURBS, ROOF DRAINS, ETC. - SEE STRUCTURAL DRAWINGS.
- CONTRACTOR SHALL COORDINATE FRAME SIZE WITH EQUIPMENT DETAILS.
- PROVIDE BLOCKING AT DUCT OPENINGS & BELOW ROOF CURBS, SEE STRUCTURAL DRAWINGS.
- OVEN EXHAUST FAN - SEE MEP DRAWINGS
- REFINISHED METAL AWNING PROVIDED AND INSTALLED BY OWNER - SEE REFLECTED CLG. PLAN, EXTERIOR ELEVATIONS & STRUCTURAL DRAWINGS. SEPARATE PERMIT & APPROVAL BY MANUFACTURER
- 4" DUROLAST ROOF DRAIN, FURNISHED AND INSTALLED BY ROOFING CONTRACTOR. DRAIN PIPE PROVIDED AND INSTALLED BY PLUMBER. REF. PLUMBING DWGS FOR ADDITIONAL INFORMATION.
- CHAIN BROILER EXHAUST FAN - SEE MEP DRAWINGS
- FRYER / GRIDDLE EXHAUST FAN - SEE MEP DRAWINGS
- ICE MACHINE CONDENSER - SEE MEP DRAWINGS
- TOILET EXHAUST FAN - SEE MEP DRAWINGS
- HVAC UNIT - SEE MEP DRAWINGS
- ROOF TOP YARD HYDRANT - SEE MEP DRAWINGS
- MAKE UP AIR UNIT - SEE MEP DRAWINGS
- 4" OVERFLOW SCUPPERS, PIPING AND OUTLET PROVIDED AND INSTALLED BY ROOFING CONTRACTOR. BOTTOM INSTALLED 4" MAX. ABOVE ROOF DRAIN INLET ELEVATION. REF. PLUMBING DWGS. FOR ADDITIONAL INFORMATION.
- FREZZER/COOLER CONDENSER UNIT - COORDINATE EXACT LOCATION W/ FREZZER/ COOLER MANUFACTURER - SEE MEP DRAWINGS
- 1 1/2" DIA. STL. PIPE GUARD RAIL, PRIMED AND PAINTED. PROVIDE POST SPACING @ 6'-0" O.C. WELD PIPE TO FLANGE SUPPORT. PROVIDE 2X12 BLOCKING AS REQUIRED. PROVIDE FLASHING AS RECOMMENDED BY ROOF MFR. SEE DETAIL 10/A-3.0



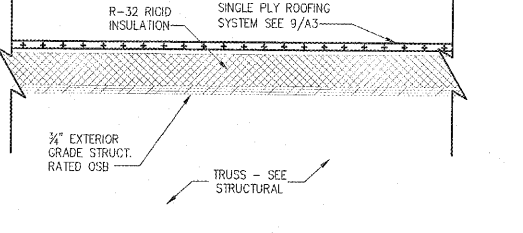
NOTE: IF THE MECHANICAL UNITS ARE OF A SIZE THAT THEY WILL CRUSH THE INSULATION, THEN THE INSULATION BELOW THE SLEEPER MUST BE REPLACED BY WOOD BLOCKING.

WOOD SLEEPER  
New Construction or Reroof  
© COPYRIGHT 2008

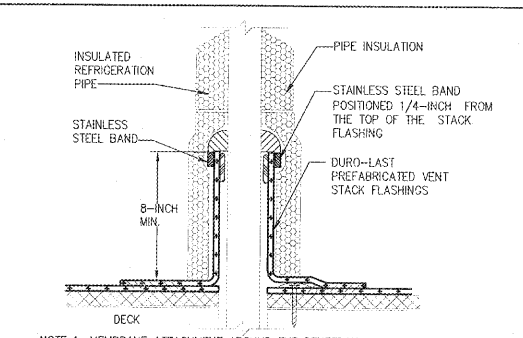
TYP. COMP. RAIL DETAIL N.T.S. 5



TYP. INSIDE WALL TERMINATION N.T.S. 6

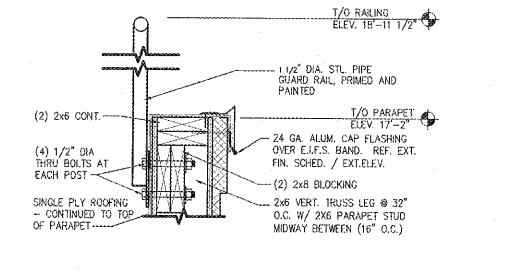


TYP. ROOF CONSTRUCTION N.T.S. 7



NOTE 1: MEMBRANE ATTACHMENT AROUND THE PENETRATION WILL BE THE SAME AS THE DECK MEMBRANE, MAX. 18-INCHES ON CENTER, AND A MINIMUM OF ONE PLATE/FASTENER PER FLASHING.  
 NOTE 2: ALL RESULTING VERTICAL AND HORIZONTAL GAPS WITH A URETHANE FOAM AND TAPE CLOSED.

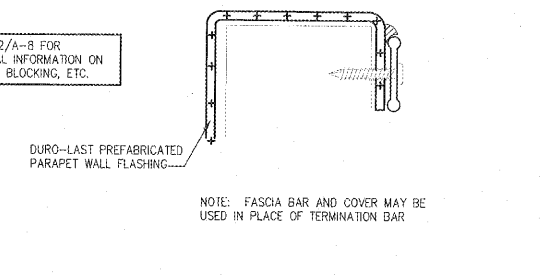
TYP. INSULATED REFER. PIPE N.T.S. 8



GUARDRAIL DETAIL N.T.S. 10

- ROOFING SPECIFICATIONS N.T.S. 9
- ROOF MEMBRANE SYSTEM: VINYL CHLORIDE POLYMER-BASED POLYMER BLEND REINFORCED WITH HIGH STRENGTH, 14 X 18 PATTERN, WEFT INSERTED, POLYESTER SCRM. MEMBRANE SHALL INCLUDE UV STABILIZERS, UV ABSORBERS, PLASTICIZERS, HEAT STABILIZERS, FLAME RETARDANTS, LUBRICANTS, AND BIOCIDES. DURO-LAST SINGLE-PLY 0.040 IN. THICK WHITE ROOF MEMBRANE BY DURO-LAST ROOFING, INC.: 525 MORLEY DRIVE SAGINAW, MI 48601; PHONE 800 248-0280.
  - ROOF INSULATION: URETHANE RIGID BOARD, URETHANE/PERLITE COMPOSITE BOARD, FIBERGLASS BOARD, FOAMGLASS BOARD, PERLITE BOARD OR POLYSTYRENE WITH AN R-32 VALUE, APPROVED FOR CONSTRUCTION OF CLASS A ROOF COVERINGS.
  - WALKWAY PADS: DURO-LAST "ROOF TRAC III" 0.135 IN. THICK; 30"x60" SIZE; COLOR/WHITE; 2 SAFETY YELLOW SKIRTS ALONG 60" SIDES.
  - G.C. SHALL PROVIDE AND INSTALL COMPLETE ROOF SYSTEM w/INSULATION.

SEE DTL. 2/A-8 FOR ADDITIONAL INFORMATION ON FLASHING, BLOCKING, ETC.



TYP. OUTSIDE WALL TERMINATION - OVER PARAPET N.T.S. 11

NRD Project # 18228

**national residential architects & engineers**

3605 CARRINGTON MILL BLVD. SUITE 105  
MORRISVILLE, NORTH CAROLINA 27660  
PH: 919 544 7251 FAX: 919 544 9389  
A DIVISION OF LMHT ASSOCIATES

Professional Engineer Seal for Virginia, License No. 640103279

**Duro-Last**

BONE WOOD PROTOTYPE REVERSE  
LARGE DINING ROOM - BN2016 LDR  
COUNTY DRIVE  
DISPUTANTA, VA 23042

**BODDE-NOELL ENTERPRISES, INC.**  
P.O. BOX 808  
ROCKY MOUNT, NC 27802-0908  
(252) 957-2800

OWNER

NO.	DATE	DESCRIPTION

DRAWN BY: \_\_\_\_\_ CHECKED BY: \_\_\_\_\_

DATE: 9-4-2019

SHEET NUMBER: **A-3.0**