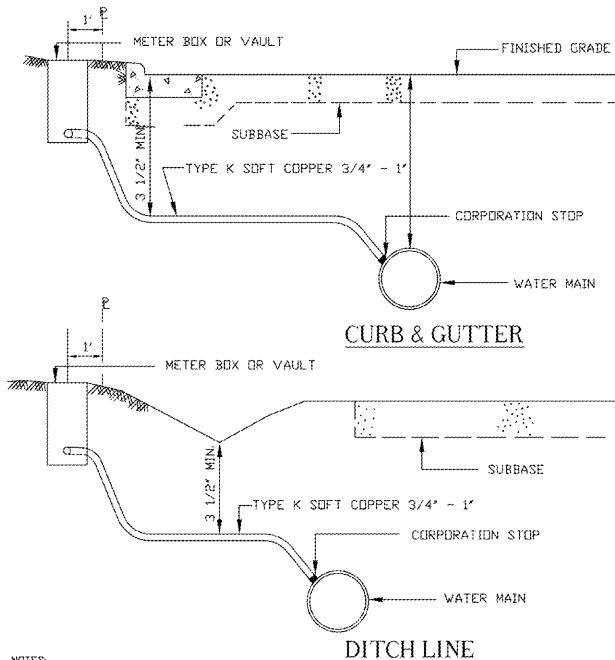


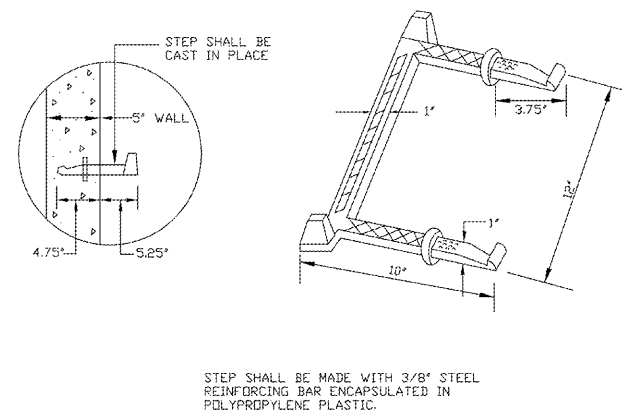
PRINCE GEORGE COUNTY
DEPARTMENT OF PUBLIC UTILITIES



NOTES:
1. 1 1/2" - 2" TAPS SHOULD BE MADE AT THE SPRING LINE OF THE MAIN LINE.
2. SADDLE MUST BE USED IF TAP IS MADE IN PVC OR A/C PIPE.
3. SADDLES TO BE DOUBLE BANDED EPOXY COATED STAINLESS STEEL.

DATE JAN. 2008	WATER SERVICE INSTALLATION DETAIL	DRWG. NO. MET-2
REVISIONS		

PRINCE GEORGE COUNTY
DEPARTMENT OF PUBLIC UTILITIES

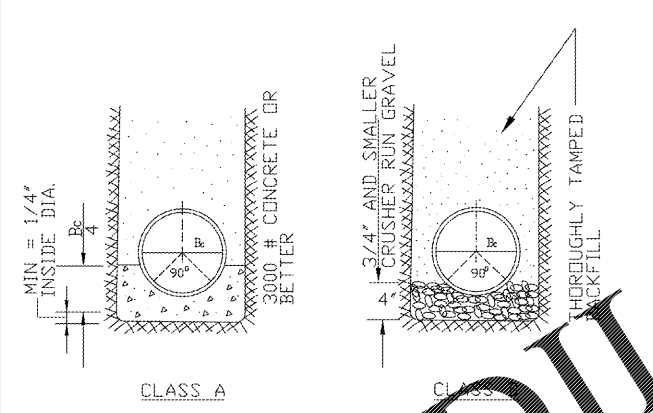


STEP SHALL BE MADE WITH 3/8" STEEL REINFORCING BAR ENCAPSULATED IN POLYPROPYLENE PLASTIC.

DATE JAN. 2008	TYPICAL MANHOLE STEP	DRWG. NO. MAN-14
REVISIONS		

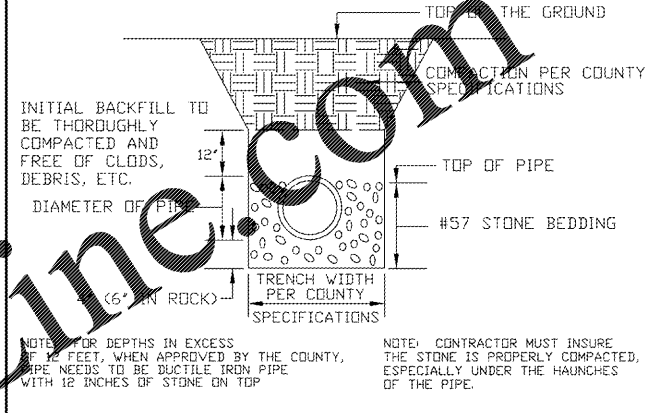
PRINCE GEORGE COUNTY
DEPARTMENT OF PUBLIC UTILITIES

MAXIMUM TRENCH WIDTH SHALL BE 33" FOR SEWER UP TO 12" DIAMETER. USE OUTSIDE PIPE DIAMETER PLUS 18" FOR SEWER 15" AND LARGER.



DATE JAN. 2008	TYPES OF SEWER BEDDING	DRWG. NO. SEW-1
REVISIONS		

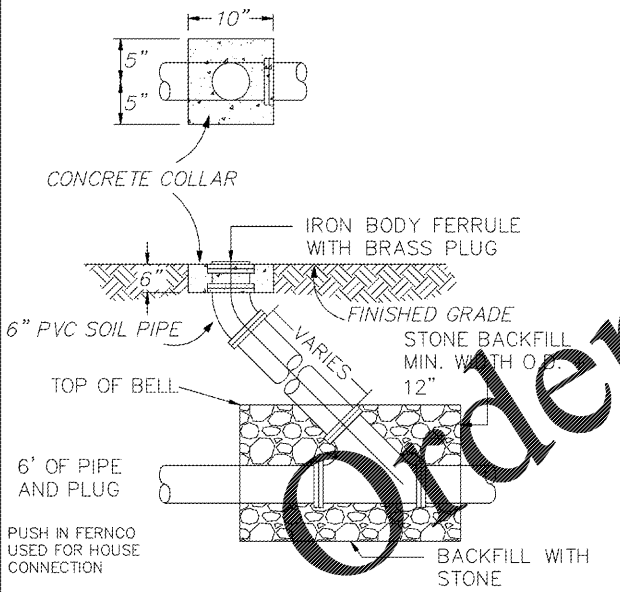
PRINCE GEORGE COUNTY
DEPARTMENT OF PUBLIC UTILITIES



NOTE: CONTRACTOR MUST INSURE THE STONE IS PROPERLY COMPACTED, ESPECIALLY UNDER THE HAUNCHES OF THE PIPE.

DATE JAN. 2008	BEDDING AND BACKFILL DETAIL FOR PLASTIC SEWER PIPE	DRWG. NO. SEW-2
REVISIONS		

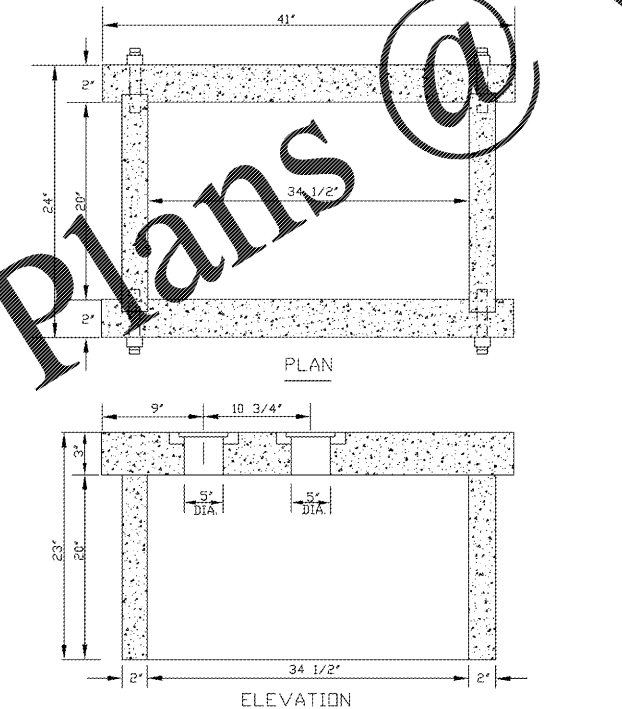
PRINCE GEORGE COUNTY
DEPARTMENT OF PUBLIC UTILITIES



HOUSE CONNECTION TO BE MADE WITH PUSH IN 6"x4" FERFNO. NO BANDED FERFNCOS ALLOWED

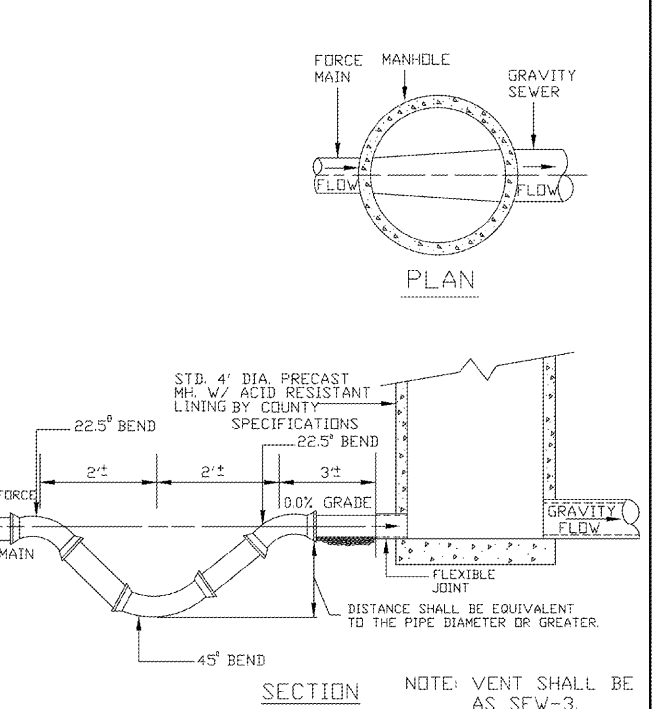
DATE JAN. 2008	SANITARY SEWER CLEANOUT - EARTH	DRWG. NO. SEW-10
REVISIONS		

PRINCE GEORGE COUNTY
DEPARTMENT OF PUBLIC UTILITIES



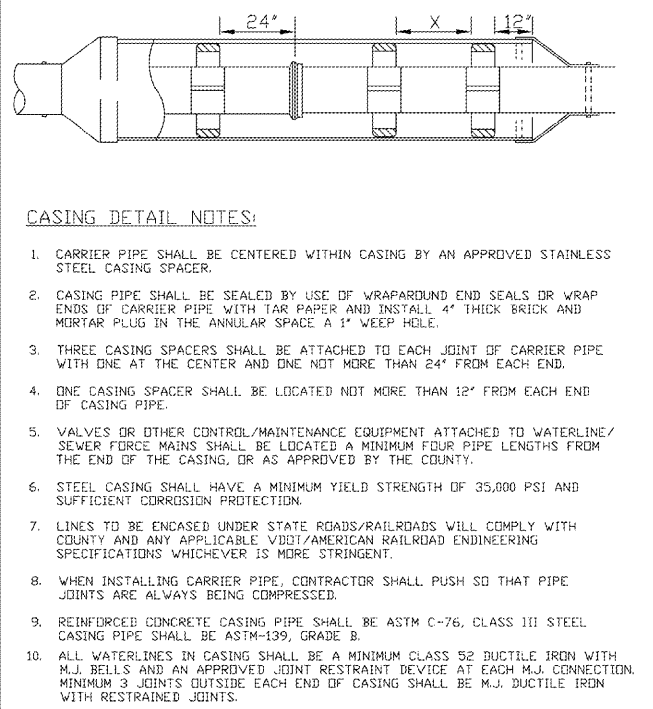
DATE JAN. 2008	1 1/2" & 2" KNOCK DOWN METER BOX	DRWG. NO. MET-5
REVISIONS		

PRINCE GEORGE COUNTY
DEPARTMENT OF PUBLIC UTILITIES



DATE JAN. 2008	FORCE MAIN DISCHARGE	DRWG. NO. SEW-6
REVISIONS		

PRINCE GEORGE COUNTY
DEPARTMENT OF PUBLIC UTILITIES



- CASING DETAIL NOTES:**
- CARRIER PIPE SHALL BE CENTERED WITHIN CASING BY AN APPROVED STAINLESS STEEL CASING SPACER.
 - CASING PIPE SHALL BE SEALED BY USE OF WRAPAROUND END SEALS OR WRAP ENDS OF CARRIER PIPE WITH TAR PAPER AND INSTALL 4" THICK BRICK AND MORTAR PLUG IN THE ANNULAR SPACE A 1" WEEP HOLE.
 - THREE CASING SPACERS SHALL BE ATTACHED TO EACH JOINT OF CARRIER PIPE WITH ONE AT THE CENTER AND ONE NOT MORE THAN 24" FROM EACH END.
 - ONE CASING SPACER SHALL BE LOCATED NOT MORE THAN 12" FROM EACH END OF CASING PIPE.
 - VALVES OR OTHER CONTROL/MAINTENANCE EQUIPMENT ATTACHED TO WATERLINE/SEWER FORCE MAINS SHALL BE LOCATED A MINIMUM FOUR PIPE LENGTHS FROM THE END OF THE CASING, OR AS APPROVED BY THE COUNTY.
 - STEEL CASING SHALL HAVE A MINIMUM YIELD STRENGTH OF 35,000 PSI AND SUFFICIENT CORROSION PROTECTION.
 - LINES TO BE ENCASED UNDER STATE ROADS/RAILROADS WILL COMPLY WITH COUNTY AND ANY APPLICABLE VDOT/AMERICAN RAILROAD ENGINEERING SPECIFICATIONS WHICHEVER IS MORE STRINGENT.
 - WHEN INSTALLING CARRIER PIPE, CONTRACTOR SHALL PUSH SO THAT PIPE JOINTS ARE ALWAYS BEING COMPRESSED.
 - REINFORCED CONCRETE CASING PIPE SHALL BE ASTM C-76, CLASS III STEEL CASING PIPE SHALL BE ASTM-139, GRADE B.
 - ALL WATERLINES IN CASING SHALL BE A MINIMUM CLASS 52 DUCTILE IRON WITH M.J. BELLS AND AN APPROVED JOINT RESTRAINT DEVICE AT EACH M.J. CONNECTION. MINIMUM 3 JOINTS OUTSIDE EACH END OF CASING SHALL BE M.J. DUCTILE IRON WITH RESTRAINED JOINTS.

DATE JAN. 2008	CASING DETAIL FOR WATER LINES & SEWER FORCE MAINS	DRWG. NO. CAS-4
REVISIONS		

STOCKS ENGINEERING
801 EAST WASHINGTON STREET
NASHVILLE, N.C. 27856
PHONE: (252) 659-8196
WWW.STOCKSENGINEERING.COM

BLN-C-1874
Hardees
BODDE-NOELL ENTERPRISES, INC.
P.O. BOX 1908
ROCKY MOUNT, N.C. 27802-1908
(252) 987-2800

Hardees at PRINCE GEORGE COUNTY, VA.

COMMONWEALTH OF VIRGINIA
J. MICHAEL STOCKS
Lic. No. 053308
Professional Engineer
8/19/19

REVISIONS	
12/8/19 PRINCE GEORGE REVIEW	
FILE NO.	2017-013
HORIZ. SCALE:	1"=20'
VERT. SCALE:	NONE