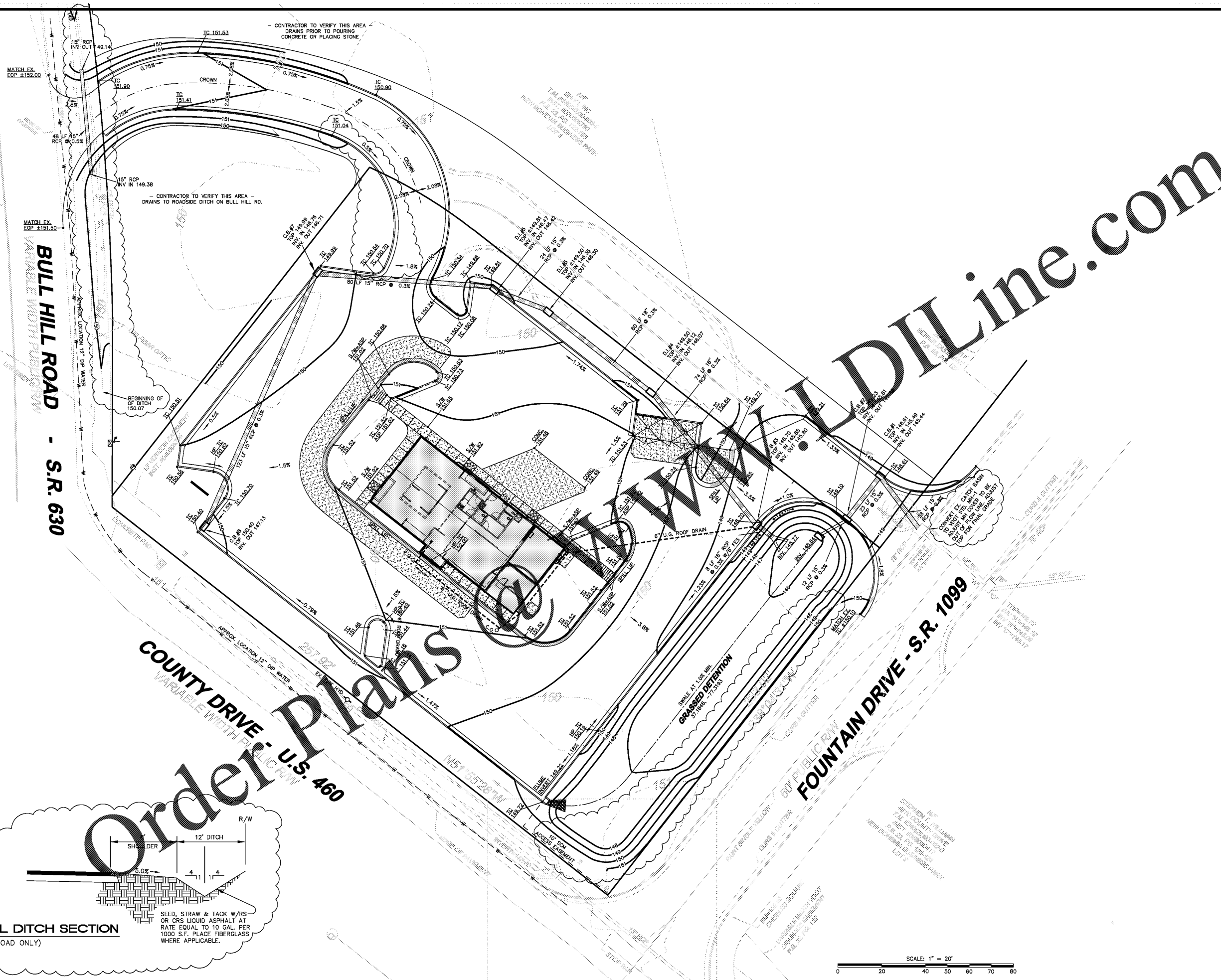
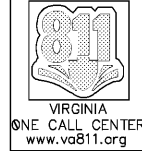


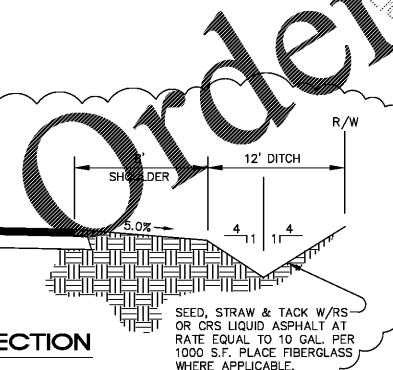
BEFORE YOU DIG,
CALL



BULL HILL ROAD - S.R. 630
VARIABLE WIDTH PUBLIC R/W

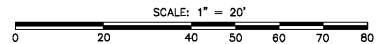
COUNTY DRIVE - U.S. 460
VARIABLE WIDTH PUBLIC R/W

FOUNTAIN DRIVE - S.R. 1099



TYPICAL DITCH SECTION
(BULL HILL ROAD ONLY)

SEED, STRAW & TACK W/RS
OR CRS LIQUID ASPHALT AT
RATE EQUAL TO 10 GAL. PER
1000 S.F. PLACE FIBERGLASS
WHERE APPLICABLE.



THEN JESUS DECLARED, 'I AM THE BREAD OF LIFE. WHOEVER COMES TO ME WILL NEVER GO HUNGRY, AND WHOEVER BELIEVES IN ME, WILL NEVER BE THIRSTY. JOHN 6:35

STOCKS ENGINEERING
801 EAST WASHINGTON STREET
NASHVILLE, N.C. 27856
WWW.STOCKSENGINEERING.COM
P.O. BOX 1108
PHONE: (252) 659-8196

Hardees
BODDIE-NOELL ENTERPRISES, INC.
P.O. BOX 1908
ROCKY MOUNT, N.C. 27802-1908
(252) 387-2800

Hardees at PRINCE GEORGE COUNTY, VA.

COMMONWEALTH OF VIRGINIA
J. MICHAEL STOCKS
Lic. No. 053508
PROFESSIONAL ENGINEER
J. Michael Stocks
8/19/19

GRADING and DRAINAGE PLAN

REVISIONS

9/12/19	Sewer Revisions
12/6/19	PRINCE GEORGE REVIEW
2/13/20	PRINCE GEORGE REVIEW
2/28/20	VOOT COMMENTS

FILE NO. 2017-013
HORIZ. SCALE: 1"=20'
VERT. SCALE: NONE

CE-05