

BEFORE YOU DIG, CALL

VIRGINIA ONE CALL CENTER  
www.va811.org

1" TO (3) FREEZEPROOF YARD HYDRANTS BY GC/SITE CONTRACTOR

2" DOMESTIC TO BUILDING

RPZ BACKFLOW IN ABOVE GROUND HOT BOX W/4" CONC. PAD

1 1/2" DOMESTIC METER

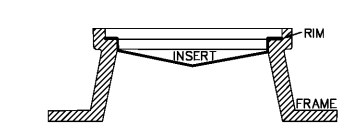
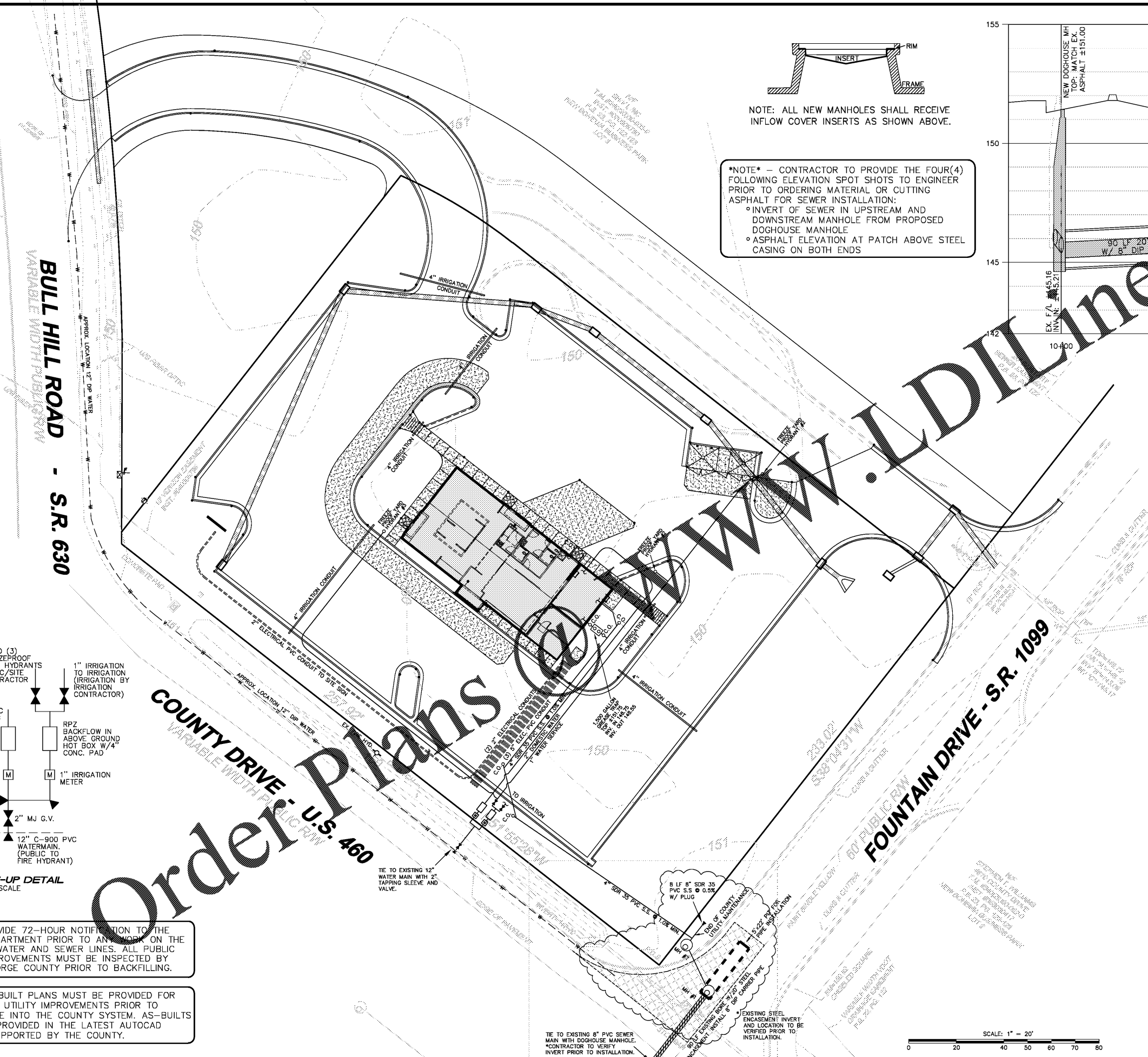
2" MJ G.V.

12" C-900 PVC WATERMAIN (PUBLIC TO FIRE HYDRANT)

BLOW-UP DETAIL NOT TO SCALE

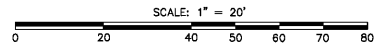
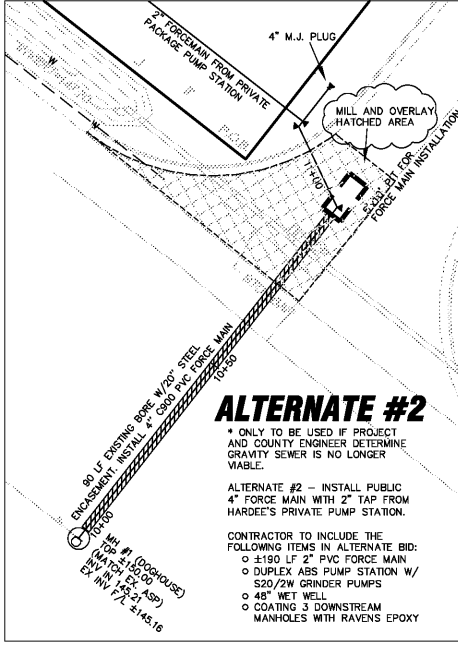
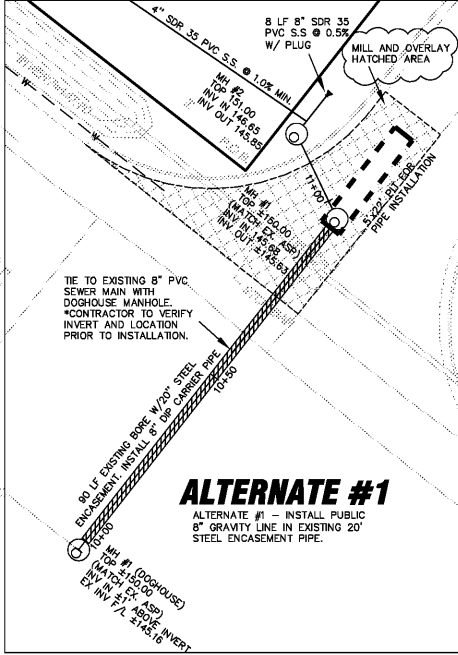
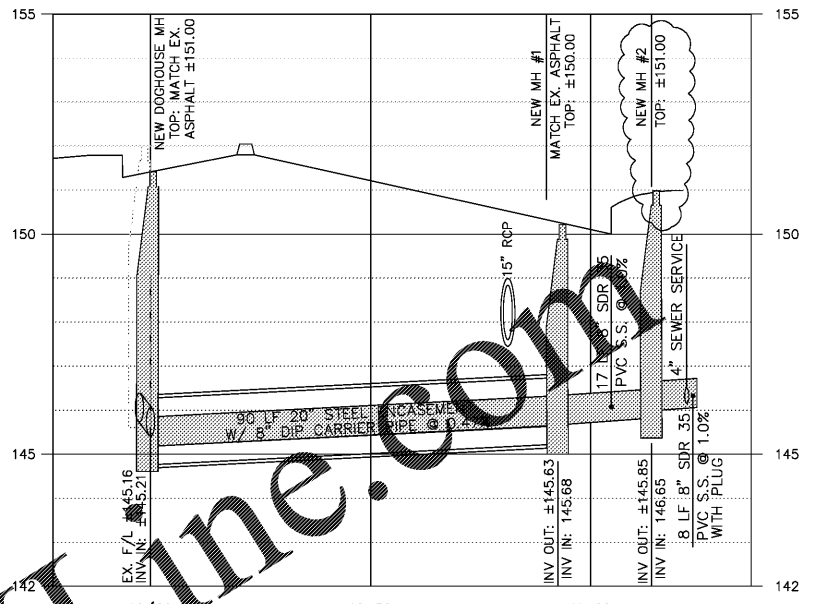
NOTE: PROVIDE 72-HOUR NOTIFICATION TO THE UTILITY DEPARTMENT PRIOR TO ANY WORK ON THE COUNTY'S WATER AND SEWER LINES. ALL PUBLIC UTILITY IMPROVEMENTS MUST BE INSPECTED BY PRINCE GEORGE COUNTY PRIOR TO BACKFILLING.

NOTE: AS-BUILT PLANS MUST BE PROVIDED FOR ALL PUBLIC UTILITY IMPROVEMENTS PRIOR TO ACCEPTANCE INTO THE COUNTY SYSTEM. AS-BUILTS SHALL BE PROVIDED IN THE LATEST AUTOCAD VERSION SUPPORTED BY THE COUNTY.



NOTE: ALL NEW MANHOLES SHALL RECEIVE INFLOW COVER INSERTS AS SHOWN ABOVE.

\*NOTE\* - CONTRACTOR TO PROVIDE THE FOUR(4) FOLLOWING ELEVATION SPOT SHOTS TO ENGINEER PRIOR TO ORDERING MATERIAL OR CUTTING ASPHALT FOR SEWER INSTALLATION:  
o INVERT OF SEWER IN UPSTREAM AND DOWNSTREAM MANHOLE FROM PROPOSED DOGHOUSE MANHOLE  
o ASPHALT ELEVATION AT PATCH ABOVE STEEL CASING ON BOTH ENDS



Order Plans

THEN JESUS DECLARED, 'I AM THE BREAD OF LIFE. WHOEVER COMES TO ME WILL NEVER GO HUNGRY, AND WHOEVER BELIEVES IN ME, WILL NEVER BE THIRSTY. JOHN 6:35

STOCKS ENGINEERING  
801 EAST WASHINGTON STREET  
NASHVILLE, N.C. 27856  
PHONE: (252) 459-8196  
WWW.STOCKSENGINEERING.COM

BLN-C-1874  
Hardee's  
BODDIE-NOELL ENTERPRISES, INC.  
P.O. BOX 1808  
ROCKY MOUNT, N.C. 27802-1808  
(252) 887-2800

BN  
HARDEE'S at PRINCE GEORGE COUNTY, VA.

COMMONWEALTH OF VIRGINIA  
MICHAEL STOCKS  
Lic. No. 003508  
Professional Engineer  
8/19/19

UTILITY PLAN  
REVISIONS  
9/12/19 Sewer Revisions  
12/6/19 PRINCE GEORGE REVIEW  
2/13/20 PRINCE GEORGE REVIEW  
2/28/20 VDOT COMMENTS  
FILE NO. 2017-013  
HORIZ. SCALE: 1"=20'  
VERT. SCALE: NONE  
CE-04