

NO.	DATE	DESCRIPTION

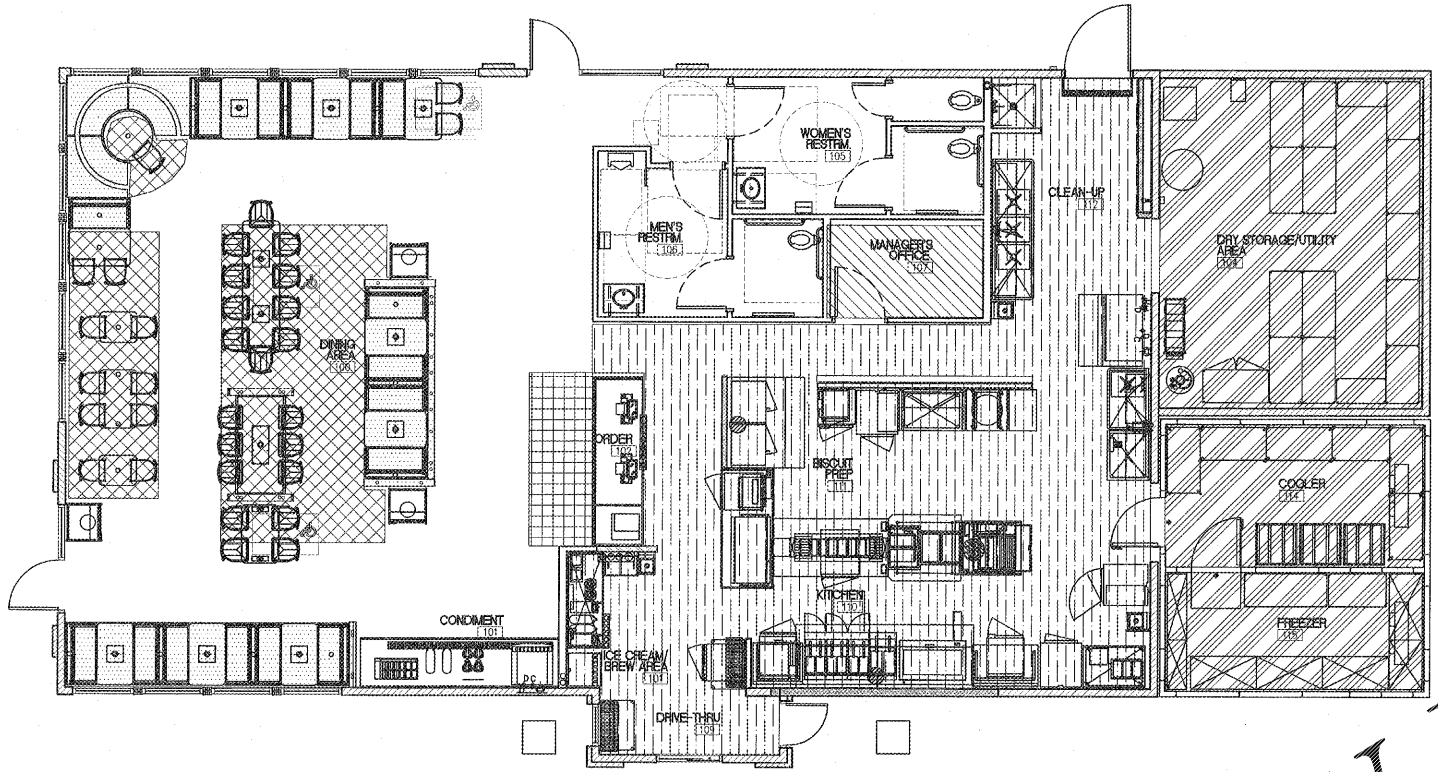
DRAWN BY: _____ CHECKED BY: _____

OCCUPANCY AND LIFE SAFETY PLANS

DATE: 9-4-2019

SHEET NUMBER:

T-2



OCCUPANCY LOAD				BY SEAT COUNT		
TABLE 1004.11				TABLE SIZE	QUANTITY	SEAT
MARK	SPACE	S.F.	OCCUPANCY			
UNHATCHED	CIRCULATION / TOILETS / MECHANICAL (NOT OCCUPABLE)	-	0	2 TOP TABLE	2	4
	QUEING - 1 PER 5 S.F.	40 S.F.	8	4 TOP TABLE	7	16
	KITCHEN / FOOD PREP / SERVING - 1 PER 100 S.F.	895.6 S.F.	5	6 TOP TABLE	1	6
	DINING AREA - 1 PER 15 S.F.	275 S.F.	19	6 TOP BOOTH	1	6
	DINING AREA (BOOTH FIXED SEATING) - 1 PER 2'-0" L.F.	88 L.F.	44	TABLE TOTAL	16	70
	OFFICE - 1 PER 100 S.F.	59.9 S.F.	1	EMPLOYEES	8	8
	STORAGE AREA - 1 PER 300 S.F.	50 S.F.	2	QUEING	8	8
TOTAL:			84.8	TOTAL:	16	86

WORST CASE TOTAL = 86

• THE LEFT SIDE OF THE TABLE SHOWS THE DESIGN OCCUPANT LOAD CALCULATED BY MAXIMUM FLOOR AREA ALLOWANCES PER OCCUPANT. THIS OCCUPANT TOTAL IS NOT BEING USED.

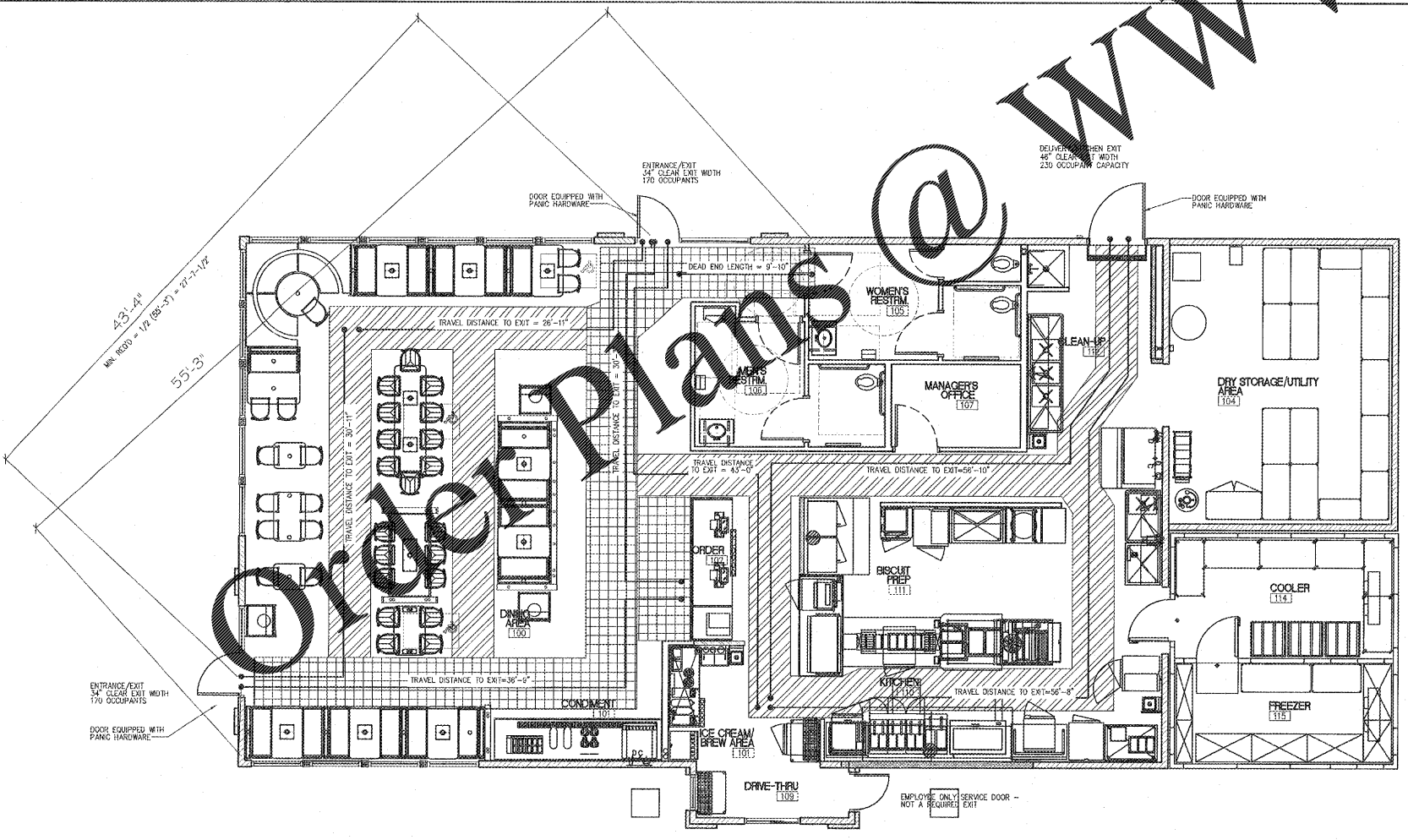
• THE RIGHT SIDE OF THE TABLE SHOWS THE TOTAL SEAT COUNT. THE TOTAL SEAT COUNT IS GREATER IN NUMBER THAN THE FLOOR AREA COUNT AND IS THE WORST CASE SCENARIO. THIS TOTAL IS BEING USED TO DETERMINE OUR DESIGN OCCUPANT LOAD AND EXITING REQUIREMENTS, TOILET FIXTURE REQUIREMENTS, AND HVAC HEATING/COOLING AND VENTILATION REQUIREMENTS.

THIS INCREASED OCCUPANT LOAD IS PER SECTION 1004.2 OF THE INTERNATIONAL BUILDING CODE.

CAP REQUIRED: 69 x 5% = 4

OCCUPANCY PLAN

SCALE: 3/16"=1'-0" 2



LIFE SAFETY PLAN

SCALE: 3/16"=1'-0" 4

WWW.LDOnline.com

Open Plans @