



McFarland Johnson
 2409 N. ROOSEVELT BOULEVARD
 SUITE 4
 KEY WEST, FLORIDA 33040
 P: 321-4321-7029
 mjinc.com

PROJECT MILESTONE

BID PLANS

NO.	DATE	DESCRIPTION

CLIENT: **KEY WEST INTERNATIONAL AIRPORT**

KEY WEST, FL

PROJECT: **MAINTENANCE STORAGE FACILITY**

DRAWN	WEF
DESIGNED	WEF
CHECKED	BFD/CMH
SCALE	N.T.S.
DATE	MARCH 4, 2020
PROJECT	1821.05

IT IS A VIOLATION OF LAW FOR ANY PERSON, UNLESS THEY ARE ACTING UNDER THE DIRECT DIRECTION OF A LICENSED PROFESSIONAL ENGINEER, ARCHITECT, LANDSCAPE ARCHITECT, OR LAND SURVEYOR, TO ALTER AN ITEM IN ANY WAY. IF AN ITEM BEARING THE STAMP OF A LICENSED PROFESSIONAL IS ALTERED, THE ALTERING ENGINEER, ARCHITECT, LANDSCAPE ARCHITECT, OR LAND SURVEYOR SHALL STAMP THE DOCUMENT AND INCLUDE THE NOTATION "ALTERED BY FOLLOWED BY THEIR SIGNATURE, THE DATE OF SUCH ALTERATION, AND A SPECIFIC DESCRIPTION OF THE ALTERATION.

DRAWING TITLE
**ONE-LINE
 DIAGRAM &
 PANEL
 SCHEDULES**

DRAWING NUMBER

E-001

Branch Panel: P1											
Location:			Volts: 277/480V			A.I.C. Rating:					
Supply From:			Phases: 3			Mains Type: MCB					
Mounting: Surface			Wires: 4			Mains Rating: 225 A					
Enclosure: Type 4X						MCB Rating: 100 A					
Notes:											
CKT	Circuit Description	Trip	Poles	A	B	C	Poles	Trip	Circuit Description	CKT	
1	Lighting	20 A	1	734 VA	1360...			3	40 A	T1 - 30 kVA Transformer	2
3						5470...		--	--		4
5								--	--		6
7								--	--		8
9								--	--		10
11								--	--		12
13								--	--		14
15								--	--		16
17								--	--		18
19								--	--		20
21								--	--		22
23								--	--		24
25								--	--		26
27								--	--		28
29								--	--		30
31								--	--		32
33								--	--		34
35								--	--		36
37	Spare	20 A	1	0 VA				1	20 A	Spare	38
39	Spare	20 A	1		0 VA	0 VA		1	20 A	Spare	40
41	Spare	20 A	1			0 VA	0 VA	1	20 A	Spare	42
Total Load:				1546 VA	5470 VA	4830 VA					
Total Amps:				6 A	22 A	19 A					
Legend:											
Load Classification	Connected Load	Demand Factor	Estimated Demand	Panel Totals							
Lighting	734 VA	100.00%	734 VA								
Power	9500 VA	100.00%	9500 VA	Total Conn. Load:		11683 VA					
Receptacle	2160 VA	100.00%	2160 VA	Total Est. Demand:		11683 VA					
				Total Conn. Current:		14 A					
				Total Est. Demand Current:		14 A					
Notes:											

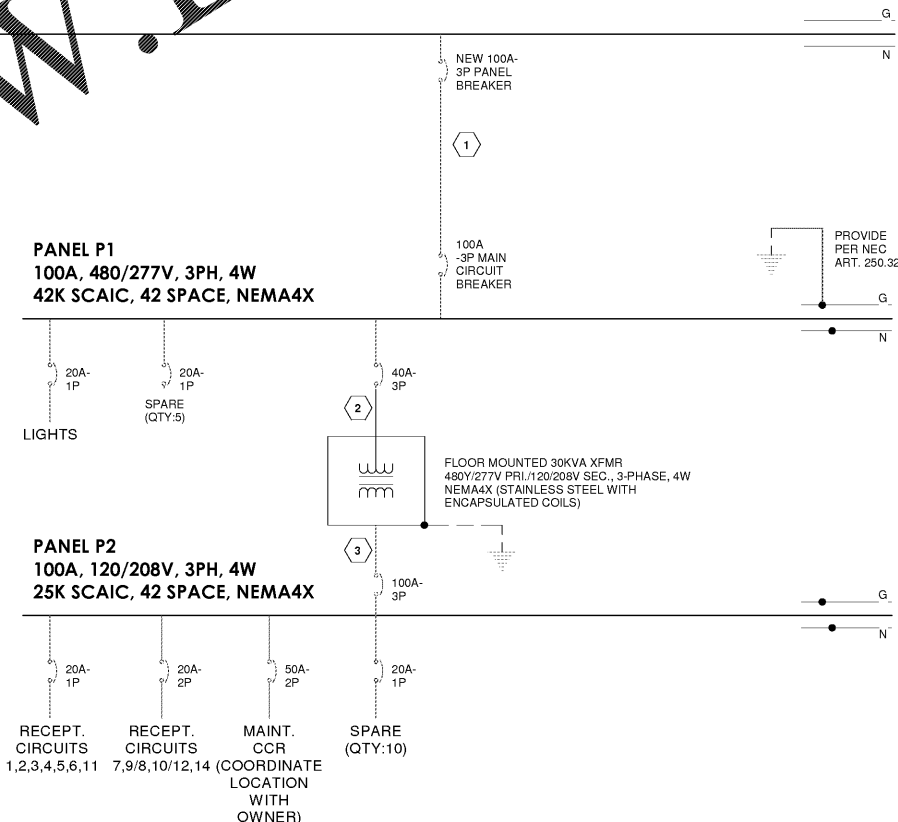
Branch Panel: P2												
Location:			Volts: 120/208V			A.I.C. Rating:						
Supply From: T1			Phases: 3			Mains Type: MCB						
Mounting: Surface			Wires: 4			Mains Rating: 225 A						
Enclosure: Type 4X						MCB Rating: 100 A						
Notes:												
CKT	Circuit Description	Trip	Poles	A	B	C	Poles	Trip	Circuit Description	CKT		
1				360 VA				1	20 A	Receptacle	2	
3	Receptacle	20 A	1		360 VA	360 VA		1	20 A	Receptacle	4	
5	Receptacle	20 A	1				360 VA	360 VA	1	20 A	Receptacle	6
7	Special Purpose Receptacle	20 A	2	0 VA	0 VA			2	20 A	Special Purpose Receptacle	8	
9		--	--		0 VA	0 VA		--	--		10	
11	Receptacle	20 A	1			360 VA	0 VA	2	20 A	Special Purpose Receptacle	12	
13	Hoist	30 A	2	1000...	0 VA			5			14	
15		--	--		1000...	3750...		5		Maintenance (Coord. with Owner)	16	
17								--	--		18	
19								--	--		20	
21								--	--		22	
23								--	--		24	
25								--	--		26	
27								--	--		28	
29								--	--		30	
31								--	--		32	
33	Spare	20 A	1		0 VA	0 VA		1	20 A	Spare	34	
35	Spare	20 A	1			0 VA	0 VA	1	20 A	Spare	36	
37	Spare	20 A	1		0 VA	0 VA		1	20 A	Spare	38	
39	Spare	20 A	1			0 VA		1	20 A	Spare	40	
41	Spare	20 A	1			0 VA	0 VA	1	20 A	Spare	42	
Total Load:				1360 VA	5470 VA	4830 VA						
Total Amps:				13 A	50 A	45 A						
Legend:												
Load Classification	Connected Load	Demand Factor	Estimated Demand	Panel Totals								
Power	9500 VA	100.00%	9500 VA									
Receptacle	2160 VA	100.00%	2160 VA	Total Conn. Load:		11660 VA						
				Total Est. Demand:		11660 VA						
				Total Conn. Current:		32 A						
				Total Est. Demand Current:		32 A						
Notes:												

FEEDER SCHEDULE	
(1)	(4) #1/0 & (1) #6G IN 3" EMT/PVC CONDUIT
(2)	(4) #8 & (1) #10G IN 1" LFMC CONDUIT
(3)	(4) #3 & (1) #8G IN 1 1/2" LFMC CONDUIT

GENERAL NOTES

- ALL ELECTRICAL WORK, INCLUDING GROUNDING, UNDER THIS CONTRACT SHALL BE PERFORMED IN ACCORDANCE WITH THE CURRENTLY ADOPTED NATIONAL ELECTRICAL CODE (NEC) AND THE LOCAL AUTHORITY HAVING JURISDICTION (LAJ).
- CONTRACTOR SHALL VERIFY AND COORDINATE WITH OTHER TRADES THE LOCATION OF EQUIPMENT PROVIDED BY THE OTHER TRADES AND THE ELECTRICAL CHARACTERISTICS OF THE EQUIPMENT (E.G. VOLTAGE, HORSEPOWER, FULL LOAD AMPS, CONTROLS, GROUNDING, ETC.).
- UNLESS OTHERWISE NOTED, ALL OUTDOOR EQUIPMENT ENCLOSURES SHALL BE NEMA 4X FOR CORROSION PROTECTION.

EXISTING DISTRIBUTION PANEL "MDPB"
 277/480V, 3PH, 4W
 LOCATED IN ELEC. RM 213 IN TERMINAL BUILDING
 FED FROM ATS-BG WITH 3 SETS OF (4) 480V MCM
 & (1)



① ELECTRICAL ONE-LINE RISER DIAGRAM
 N.T.S.

Order Plans @

WWW.LDLINE.com