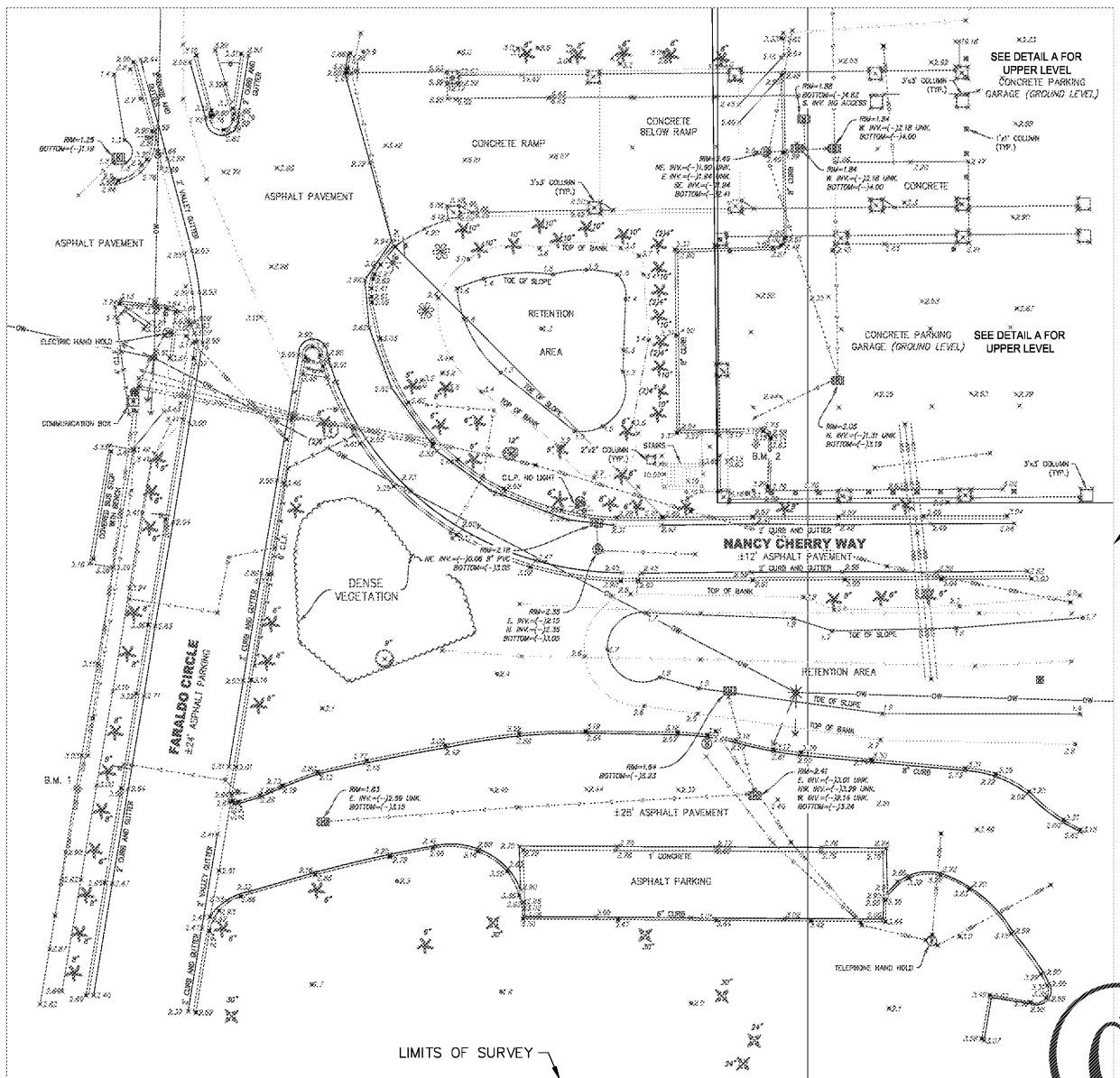
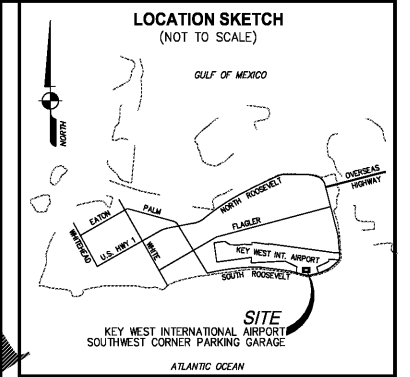
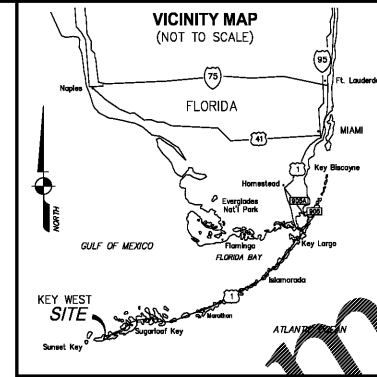


TOPOGRAPHIC SURVEY OF:
KEY WEST INTERNATIONAL AIRPORT
 SOUTHWEST CORNER OF
 PARKING GARAGE



LIMITS OF SURVEY

LEGEND

- BENCHMARK
- ☒ CATCH BASIN
- ☒ CONCRETE LIGHT POLE (C.L.P.)
- ☒ DRAINAGE MANHOLE
- ☒ ELECTRIC OUTLET
- ☒ EXISTING ELEVATION
- ☒ FLAG POLE
- ☒ GUY AND/OR HAND HOLE
- ☒ IRRIGATION CONTROL VALVE
- ☒ METAL LIGHT POLE
- ☒ OVERHEAD WIRES
- ☒ SANITARY WHEEL
- ☒ SIGN (UNIDENTIFIED)
- ☒ UNDERGROUND UTILITY LINE
- ☒ WOOD LIGHT POLE
- ☒ WOOD LIGHT POLE WITH LIGHT
- ☒ YARD DRAIN

TREE LEGEND

- ☒ Australian Pine
- ☒ Subon Wood
- ☒ Palm
- ☒ Saw Grape
- ☒ Unknown Species
- ☒ Diameter 12" Diameter Trunk (Typical)

UNDERGROUND UTILITY LEGEND

- UNDERGROUND ELECTRIC CABLE
- UNDERGROUND WATER LINE
- UNDERGROUND COMMUNICATIONS LINE
- UNDERGROUND DRAINAGE LINE
- UNDERGROUND UNKNOWN LINE
- UNDERGROUND UTILITIES SHOWN HEREON WERE FLAGGED BY OTHERS (SEE SURVEYOR'S REPORT NO. 8)

B.M.	NORTHING (NAD 83)	EASTING (NAD 83)	ELEVATION (NAVD 83)	DESCRIPTION
B.M. 1	80355.6	804816.0	3.01	NAIL AND DISK "AVIROM TRAVERSE"
B.M. 2	80442.4	804987.0	3.07	IRON ROD W/CAP "AVIROM TRAVERSE"
B.M. 3	80534.7	805049.1	13.99	NAIL AND DISK "AVIROM TRAVERSE"

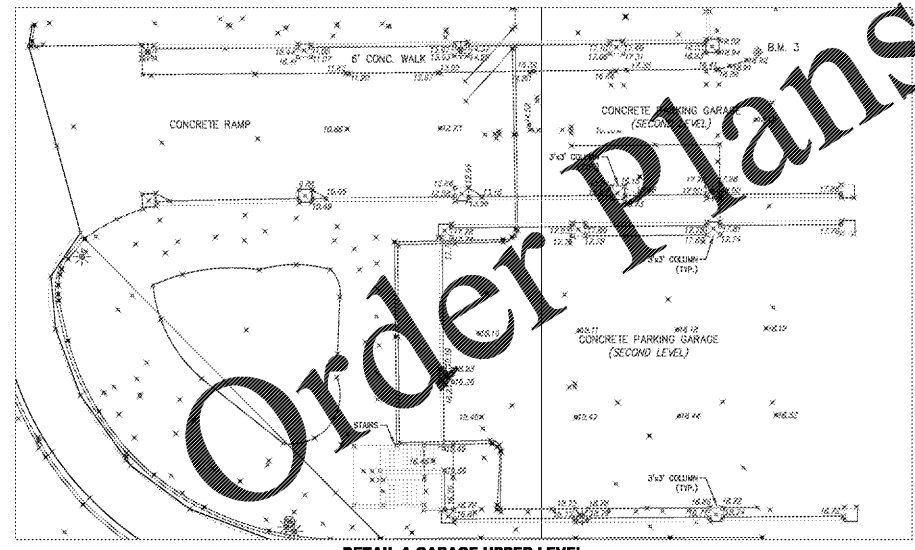
SURVEYOR'S REPORT:

- Reproductions of this Sketch are not valid without the signature and the original seal of a Florida licensed surveyor and mapper.
- Additions or deletions to this sketch by other than the signing party is prohibited without written consent of the signing party.
- No Title Opinion or Abstract to the subject property has been provided. It is possible that there are Deeds, Easements, or other instruments (recorded or unrecorded) which may affect the subject property. No search of the Public Records has been made by the Surveyor.
- No legal description was provided by the client.
- The species of trees as shown hereon were identified to the best of knowledge and ability of the surveyor, without the benefit of an arborist or biologist. It is the responsibility of the end user to verify the identity of the species.
- Pipe size, material and inverts of sewer and drainage structures were obtained where accessible. Due to the nature of obtaining the data where the structures are in use, the information obtained may be the best approximation of the true measurements. It is the responsibility of the end user to verify the diameter and material utilizing as-built drawings or other resources prior to construction.
- The sub-surface utilities shown hereon have been located from found reference marks generated by others on the ground. The surveyor makes no guarantees that the underground utilities shown comprise all such utilities in the area, either in service or abandoned. The surveyor further does not warrant that the underground utilities shown are in the exact location indicated, although he does certify that the reference marks are located accurately. The surveyor has not physically located the underground utilities.
- The sub-surface utilities were located by:
 - GPRS (Ground Penetrating Radar Systems)
 - Telephone No. (419)-843-9804
 - 5217 Monroe St., Suite A, Toledo, OH 43623
 - WA Number: 133635
 - Lead Technician: Jean-Baptiste Peterson, peterson.jean-baptiste@gprsync.com
- Limitations per Lead Technician:
 - All utilities located were marked in paint and flagged in areas where possible.
 - There were some surface obstructions that prevented full scanning in some areas; specifically, the areas with landscaping and parked cars. In areas such as these I was not able to use the GPR.
 - The GPR depth was limited to 6.5-7' in most areas, with the exception of the gravel area south of Nancy Cherry Ln and a small portion of the street that was limited to 4'.
 - As a result of the depth limitation, the Sanitary Sewer line could not be located and the GPR was unable to continue following a single fiber line that headed towards the gravel area where the depth was limited.
 - In order to be thorough I made multiple attempts to open the manhole for the sanitary sewer line that could not be located with the GPR, but the manhole was seal shut with asphalt on the edge of it.
- The Grid coordinates shown hereon are based on a Real-time Network (RTN) GPS Control Survey which is certified to a 2 centimeter local accuracy, relative to the nearest control point within the National Geodetic Survey's (NGS) Geodetic Control Network, and is based on the North American Datum of 1983, adjustment of 2011 (NAD 83/2011), of the Florida State Plane Coordinate System (Transverse Mercator Projection), East Zone. Observations were made to the Primary Airport Control Station "EYW ARP 2", having a differential of (-) 0.01' in the Northing component and 0.03' in the Easting component.
 - Method: Wide Area Continuously Operating GPS Reference Station Network
 - Equipment Used: Leica GS18 LTE & UHF Performance Serial Number 3602394
 - Processing Software: Leica Infinity, Version 3.1.0.3188
- Elevations shown hereon are based on the North American Vertical Datum of 1988.
- Benchmark Description: NGS Benchmark "Q 121" (PID A40043), Elevation= 6.15 (NAVD 88), Elevation= 7.49' (NGVD 29). To convert elevations from NGVD 29 to NAVD 88, add algebraically 1.34 feet to the elevation.
- The entire subject property lies within Flood Zone VE (Elevation 11), Community Panel No. 125129 1517 K, dated February 18, 2005 (Elevations are referenced to NAVD 29).
- Data shown hereon was compiled from instrument(s) of record and does not constitute a boundary survey.
- Address: 3501 South Roosevelt Boulevard, Key West, Florida 33040.
- This map is intended to be displayed at a scale of 1:240 (1"= 20') or smaller.
- Symbols shown hereon and in the legend may have been enlarged for clarity. These symbols have been plotted at the center of the field location and may not represent the actual shape and size of the feature.
- Units of measurement are in U.S. Survey Feet and decimal parts thereof. Well identified features in this survey were field measured to a horizontal positional accuracy of 0.05'. The elevations on impervious surfaces were field measured to 0.03' and on ground surfaces to 0.1'.
- Abbreviation Legend: BM= Benchmark; C.L.F.= Chain Link Fence; CONC.= Concrete; EL.= Elevation; INV.= Invert; LB= Licensed Business; NAD= North American Datum; NAVD= North American Vertical Datum; NGVD= National Geodetic Vertical Datum; PVC= Poly Vinyl Chloride; TYP= Typical; UNK= Unknown; W/= With.

CERTIFICATION:

I HEREBY CERTIFY that the attached Topographic and Tree Survey of the hereon described property is true and correct to the best of my knowledge and belief as surveyed in the field under my direction. I FURTHER CERTIFY that this Topographic and Tree Survey meets the Standards of Practice set forth in Chapter 5J-17, Florida Administrative Code, pursuant to Chapter 472, Florida Statutes.

Date: _____
 KEITH M. CHEE-A-TOW, P.L.S.
 Florida Registration No. 5328
 AVIROM & ASSOCIATES, INC.
 L.B. No. 3300



DETAIL A GARAGE UPPER LEVEL
 SCALE 1" TO 20'

AVIROM & ASSOCIATES, INC.
 SURVEYING & MAPPING
 50 S.W. 2nd AVENUE, SUITE 102
 BOCA RATON, FLORIDA 33432
 (561) 392-2594 / www.AVIROMSURVEY.com
 © 2019 AVIROM & ASSOCIATES, INC. all rights reserved. This sketch is the property of AVIROM & ASSOCIATES, INC. and should not be reproduced or copied without written permission.

REVISIONS	DATE	F.B. / PG.	BY	CKD	REVISIONS	DATE	F.B. / PG.	BY	CKD

TOPOGRAPHIC AND TREE SURVEY
KEY WEST INTERNATIONAL AIRPORT
 SOUTHWEST CORNER OF PARKING GARAGE
 3501 SOUTH ROOSEVELT BOULEVARD
 KEY WEST, FLORIDA 33040
 CITY OF KEY WEST
 MONROE COUNTY, FLORIDA

JOB#:	9133-16
SCALE:	1" = 20'
DATE:	06/21/2019
BY:	S.R.L.
CHECKED:	K.M.C.
F.B.	1951 PG. 36
SHEET:	1 OF 1