



DUNWODY/BEELAND,
Architects, Inc.

300 Mulberry Street, Suite 604
Macon, Georgia 31201
T 478 742 6321
F 478 742 0863
www.dunwodybeeland.com

Dunwody/Beeland, Architects, Inc.
This drawing may be utilized only for
the purpose of constructing or
installing the work shown thereon at the
site of the work specified. Any other
use of this drawing, including without
limitation any reproduction or alteration
of this drawing, without prior written
approval of Dunwody/Beeland,
Architects, Inc. is prohibited.

**A NEW RANGER STATION
AT CLAYSTONE PARK
FOR MACON-BIBB COUNTY**

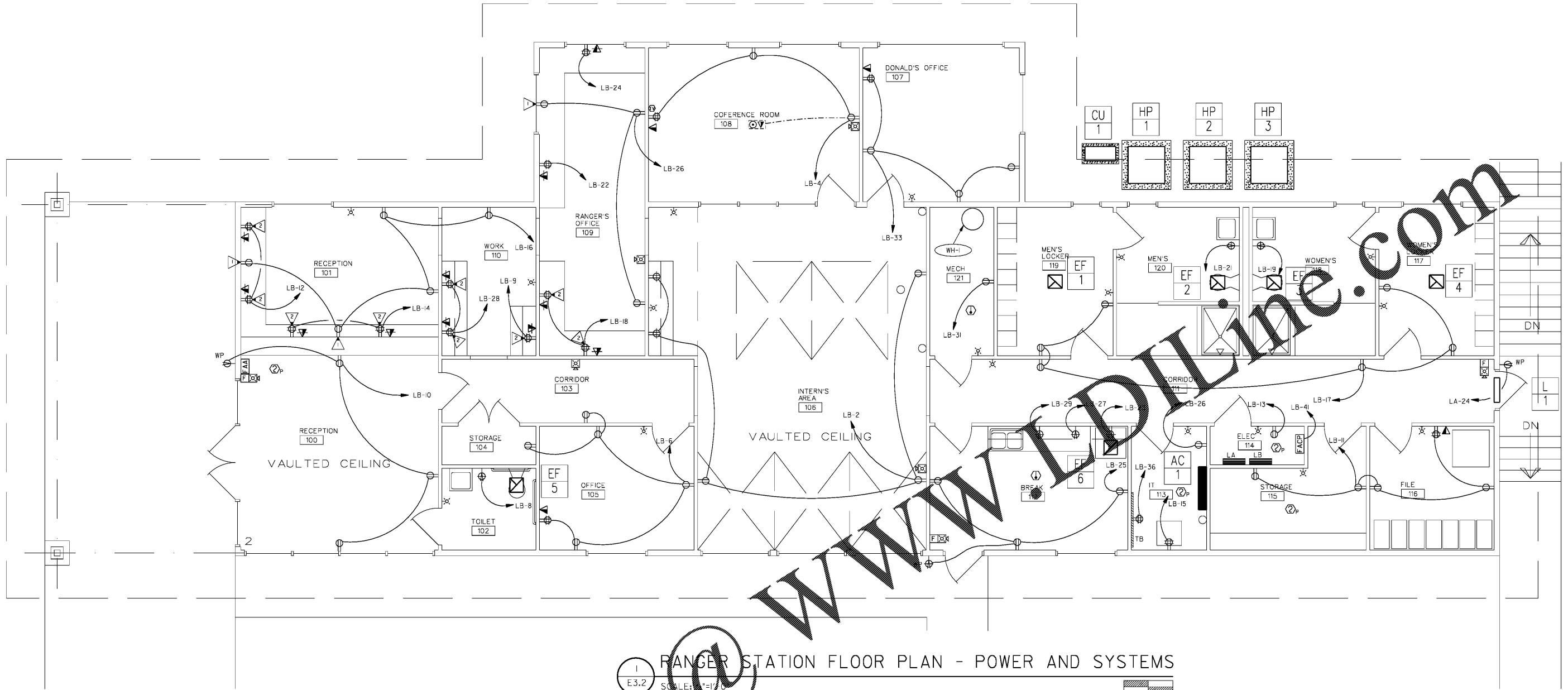
MOSLEY DIXON ROAD MACON, GEORGIA

Revisions:

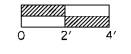
Sheet Title:
**FLOOR PLAN -
POWER AND
SYSTEMS**

Project #: 1819 Date: 12/19/2019

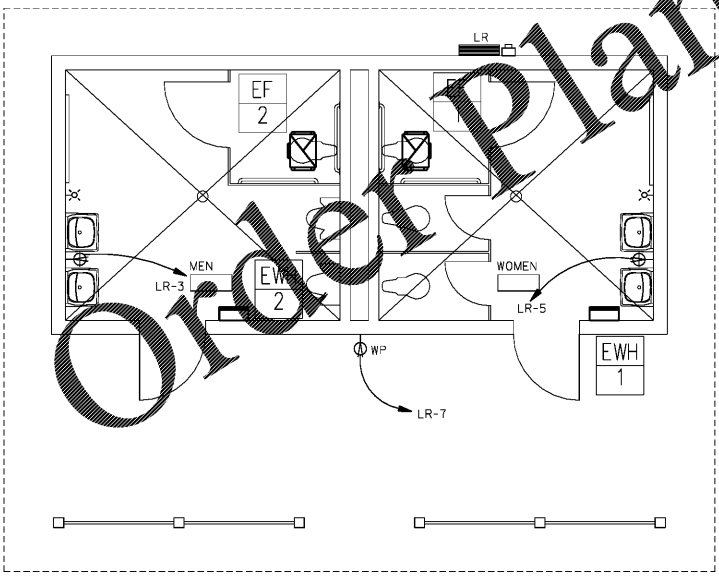
E3.2



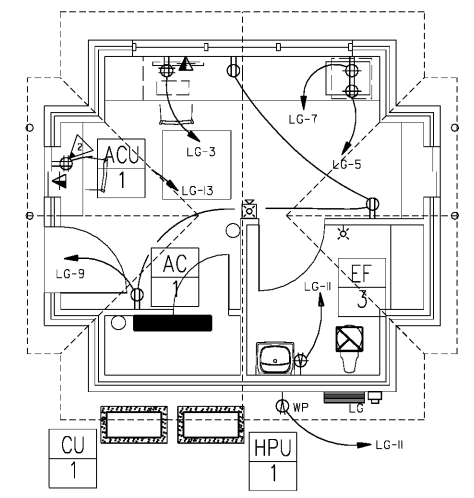
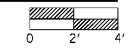
1 RANGER STATION FLOOR PLAN - POWER AND SYSTEMS
E3.2 SCALE: 1/4"=1'-0"



KEYED NOTES: (THIS SHEET ONLY)
▽ RECEPTACLE MOUNTED UNDER COUNTER.
▽ 42 IN.AFF.



2 RESTROOM FLOOR PLAN - POWER AND SYSTEMS
E3.2 SCALE: 1/4"=1'-0"



3 GATEHOUSE FLOOR PLAN - POWER AND SYSTEMS
E3.2 SCALE: 1/4"=1'-0"

