



DUNWODY/BEELAND,
Architects, Inc.

Dunwody/Beeland, Architects, Inc.
This drawing may be utilized only for
the purpose of constructing or
installing the work shown thereon at the
site of the work specified. Any other
use of this drawing, including without
limitation any reproduction or alteration
of this drawing, without prior written
approval of Dunwody/Beeland,
Architects, Inc. is prohibited.

**A NEW RANGER STATION
AT CLAYSTONE PARK
FOR MACON-BIBB COUNTY**

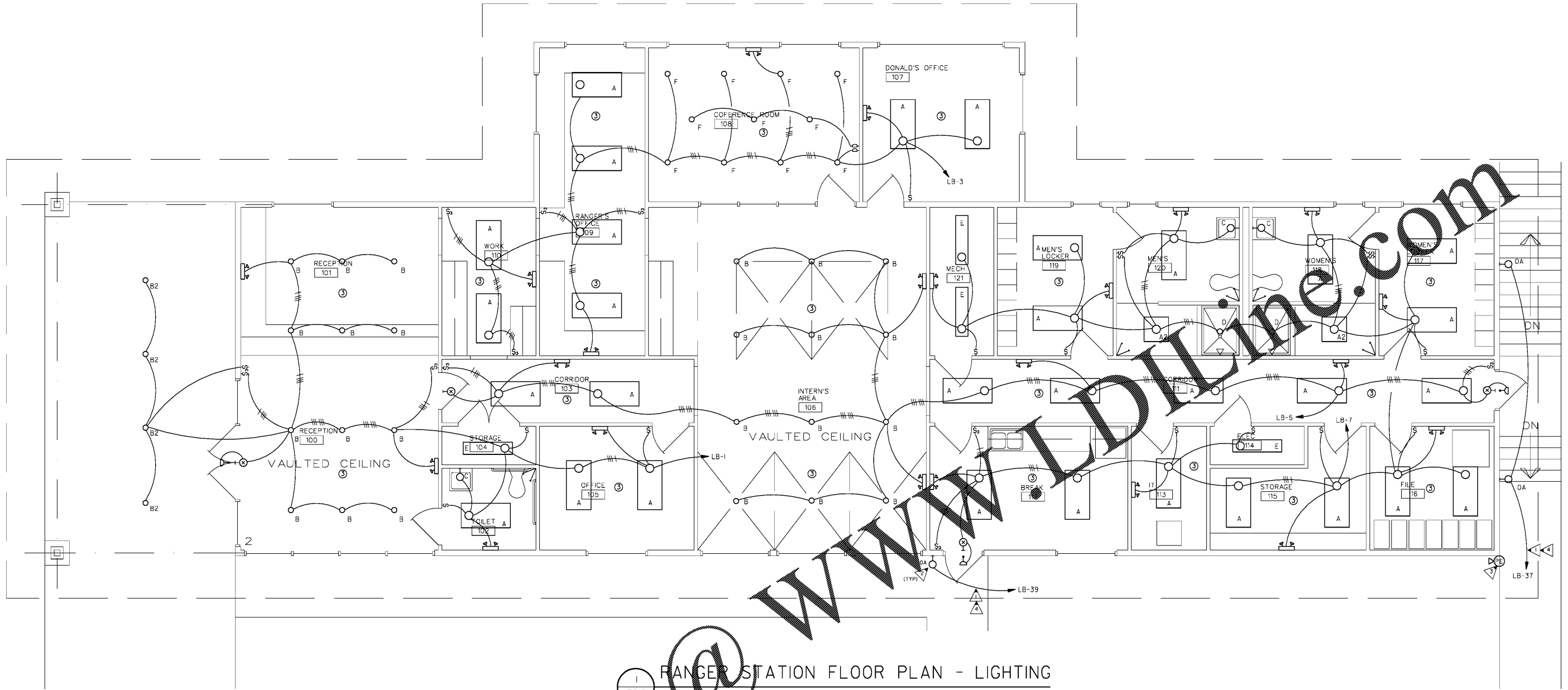
MOSLEY DIXON ROAD MACON, GEORGIA

Revisions:	

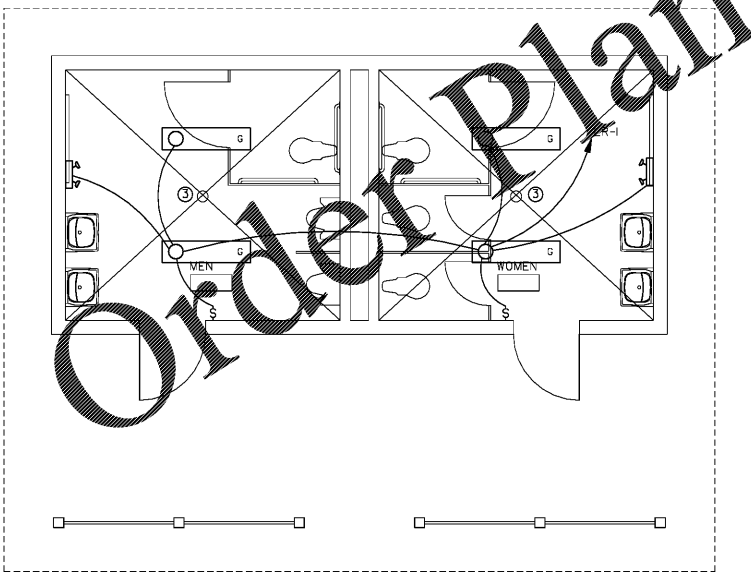
Sheet Title:
**FLOOR PLAN -
LIGHTING**

Project #: 1819 Date: 12/19/2019

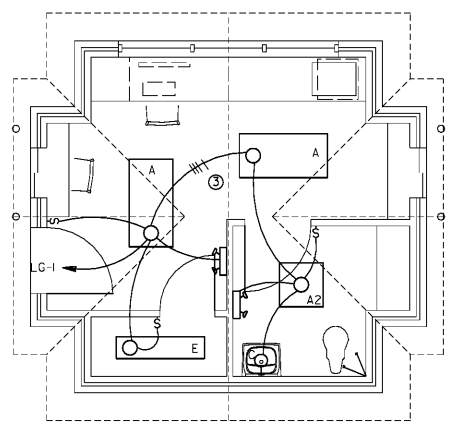
E2.2



1 RANGER STATION FLOOR PLAN - LIGHTING
E2.2 SCALE: 1/4" = 1'-0"
0 2' 4'



2 RESTROOM FLOOR PLAN - LIGHTING
E2.2 SCALE: 1/4" = 1'-0"
0 2' 4'



3 GATEHOUSE FLOOR PLAN - LIGHTING
E2.2 SCALE: 1/4" = 1'-0"
0 2' 4'

KEYED NOTES: (THIS SHEET ONLY)

- ▽ 10'± ENTIRE CIRCUIT.
- ▽ COORDINATE WITH ARCHITECT/OWNER FOR MOUNTING HEIGHT/LOCATION PRIOR TO INSTALLATION.
- ▽ LOCATE P.E. CELL FACING NORTH, CLEAR OF MAN MADE LIGHT SOURCES. J-BOX TO HOUSE P.E. CELL SHALL BE RECESSED MOUNTED WITH STAINLESS STEEL COVER.
- ▽ ROUTE VIA PHOTO CELL SHALL CONTROL DUSK TILL DAWN OPERATIONS.