



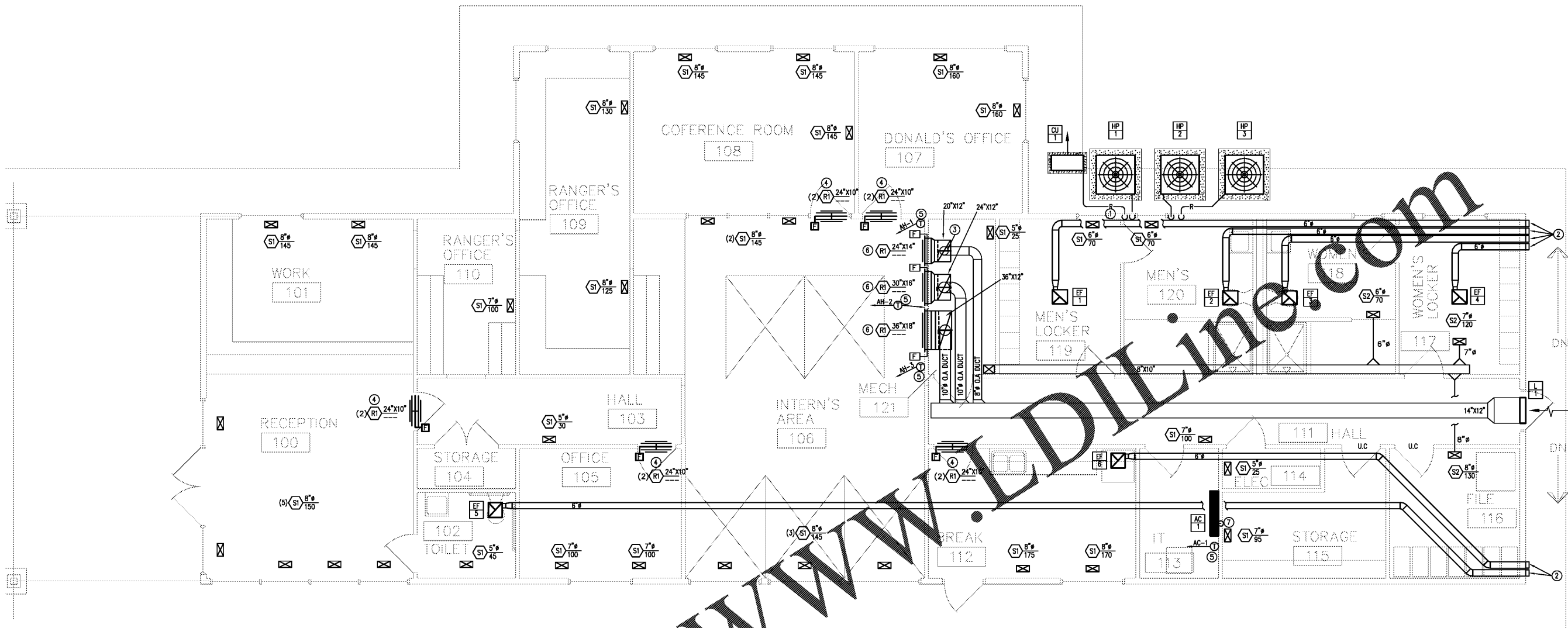
**DUNWODY/BEELAND,**  
architects, inc.

Web: www.dunwodybeeland.com  
 169 New Street, Suite 604  
 Macon, Georgia 31201  
 T 478 742 5321  
 F 478 743 0863

Dunwody/Beeland, Architects, Inc.  
 This drawing may be utilized only for the  
 purpose of constructing or installing the  
 work shown thereon at the site of the work  
 specified. Any other use of this drawing,  
 including without limitation any  
 reproduction or alteration of this drawing,  
 without prior written approval of  
 Dunwody/Beeland, Architects, Inc. is  
 prohibited.

**A NEW RANGER STATION  
 AT CLAYSTONE PARK  
 FOR MACON-BIBB COUNTY**

MOSLEY DIXON ROAD MACON, GEORGIA



1 MAIN LEVEL MECHANICAL PLAN  
 SCALE: 1/4"=1'-0"

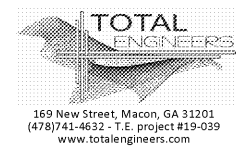
Order Plans @ WWW.DDILLINE.COM

- KEY NOTES (THIS SHEET ONLY):
- ① ROUTE REFRIGERANT PIPES TO THEIR RESPECTIVE AIR-HANDLING UNITS INSIDE BOSSING ROUTES AND SEE REFRIGERANT PIPES PER MANUFACTURER'S INSTRUCTIONS.
  - ② 6" EXHAUST AIR WALL CAP. PAINT TO MATCH EXTERIOR WALL.
  - ③ TYPICAL MANUAL VOLUME DAMPER.
  - ④ BOTTOM OF GRILL AT TOP OF DOOR.
  - ⑤ TOP OF THERMOSTAT SHALL BE 42" AFF.
  - ⑥ BOTTOM OF GRILL 48" AFF.
  - ⑦ CONDENSATE DRAIN DOWN TO DRAIN SPACE.

Revisions:	

Sheet Title:  
 RANGER STATION  
 MAIN LEVEL  
 MECHANICAL PLAN

Project #: 1819 Date: 12/23/19



**M2.1RS**