



**DUNWODY/BEELEND,**  
architects, inc.

Web: [www.dunwoodybeeland.com](http://www.dunwoodybeeland.com)  
Macon: 1100 South Street, Suite 604  
Macon, Georgia 31201  
T 478/742.5321  
F 478/743.6863

Dunwoody/Beeland, Architects, Inc.  
This drawing may be utilized only for the  
purpose of constructing or installing the  
work shown thereon at the site of the work  
specified. Any other use of this drawing,  
including without limitation any  
reproduction or alteration of this drawing,  
without prior written approval of  
Dunwoody/Beeland, Architects, Inc. is  
prohibited.

**A NEW RANGER STATION  
AT CLAYSTONE PARK  
FOR MACON-BIBB COUNTY**

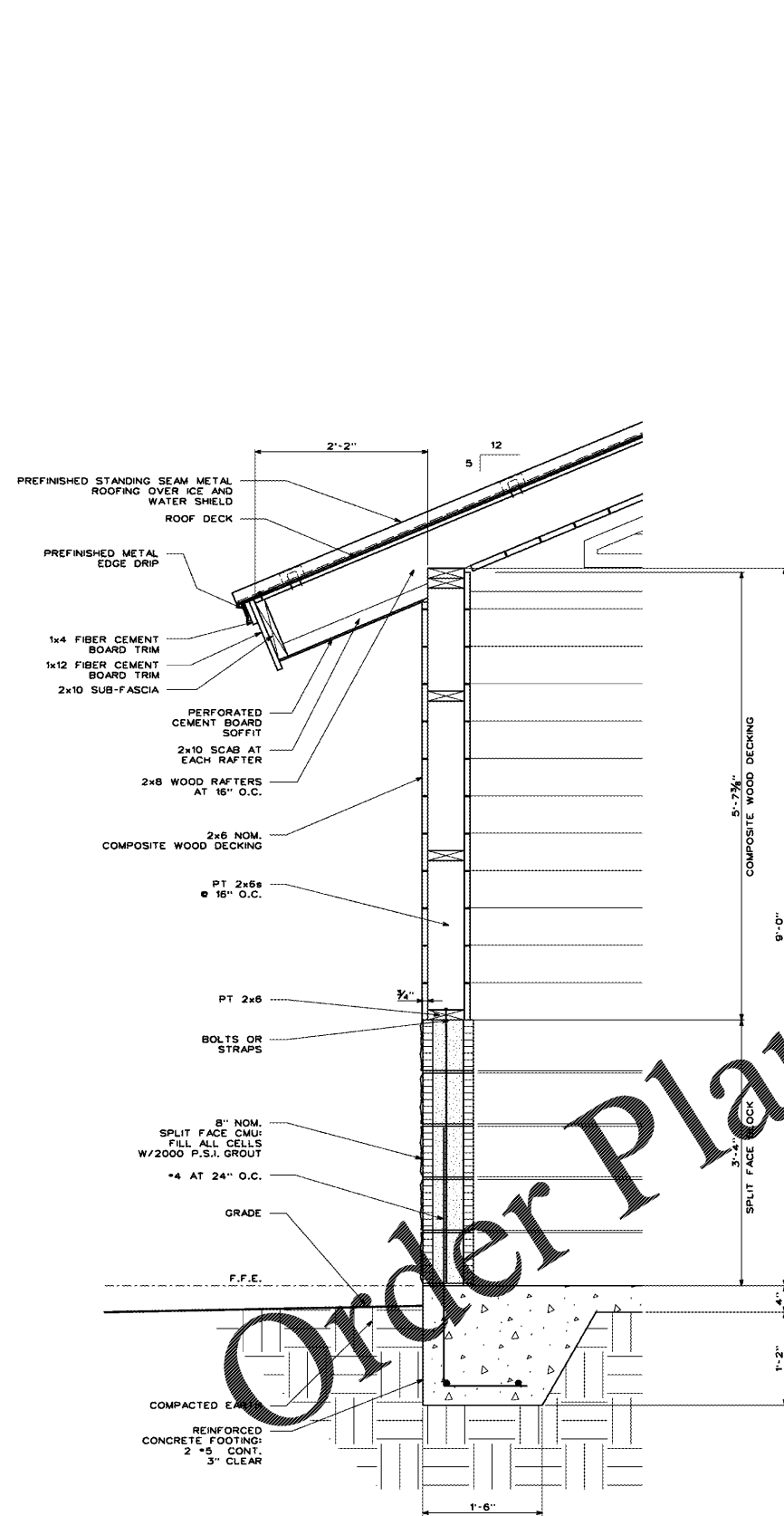
MOSLEY DIXON ROAD MACON, GEORGIA

Revisions:

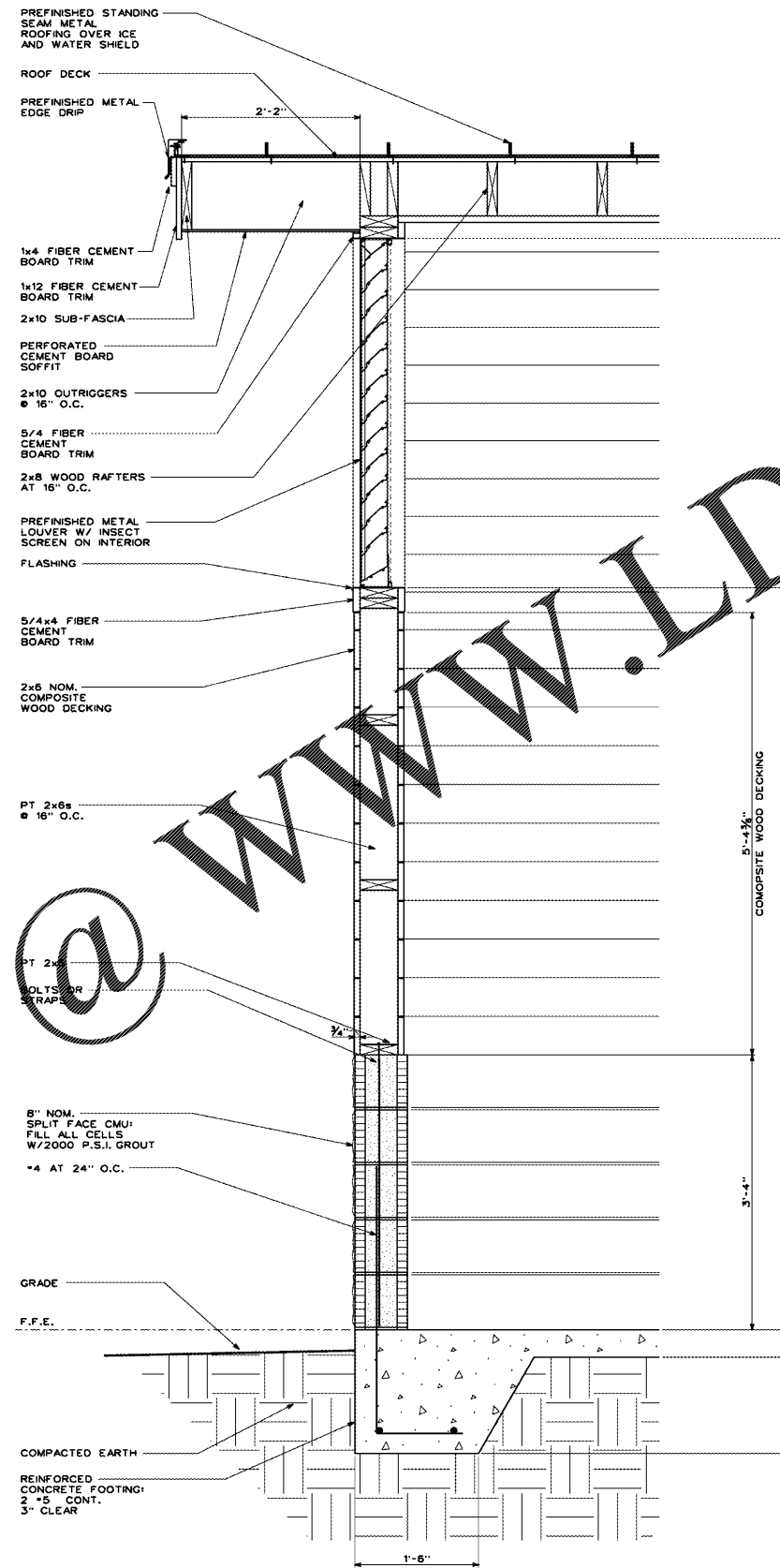

Sheet Title:  
New Restrooms:  
Sections

Project #: 1819 Date: 12/20/19

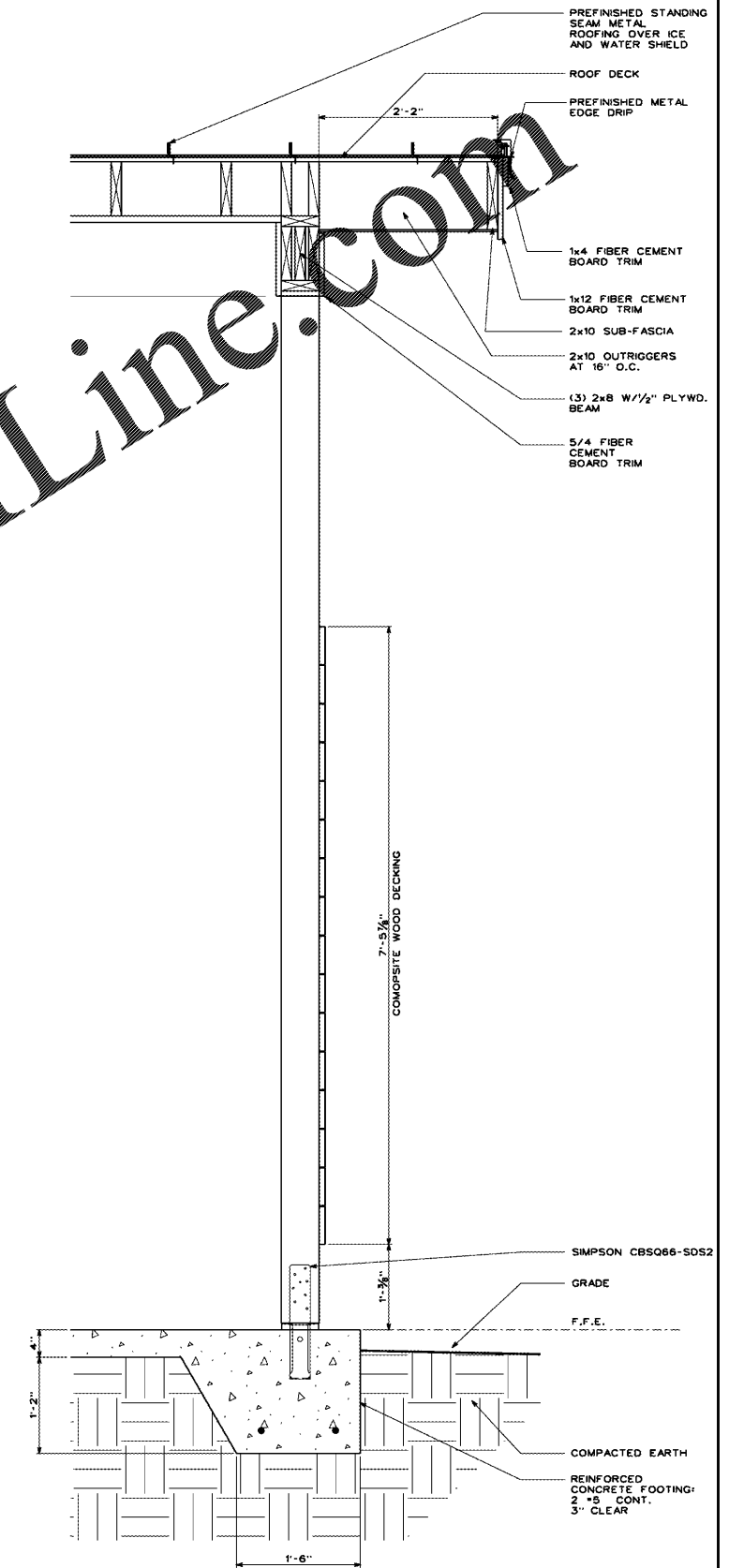
**A5.6**



**1**  
WALL SECTION  
SCALE: 1" = 1'-0"



**2**  
WALL SECTION  
SCALE: 1" = 1'-0"



**3**  
WALL SECTION  
SCALE: 1" = 1'-0"