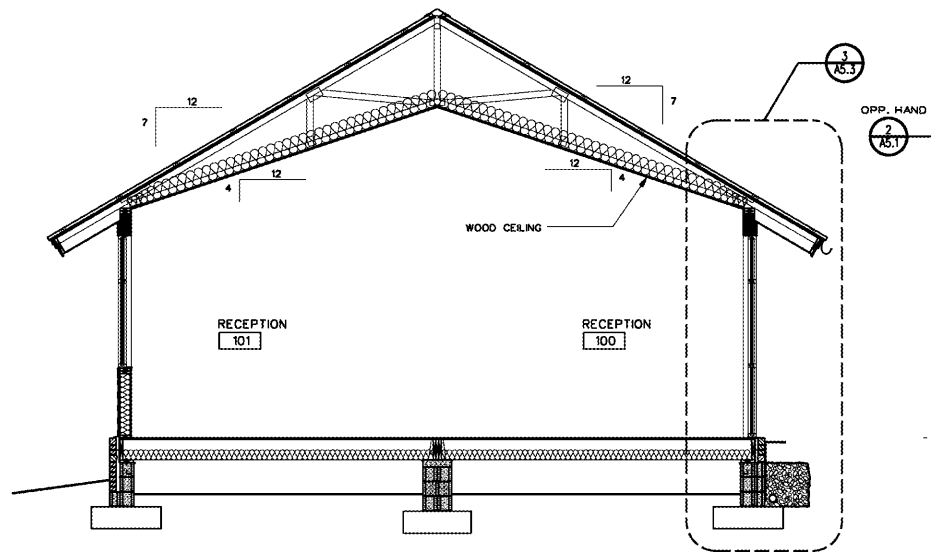
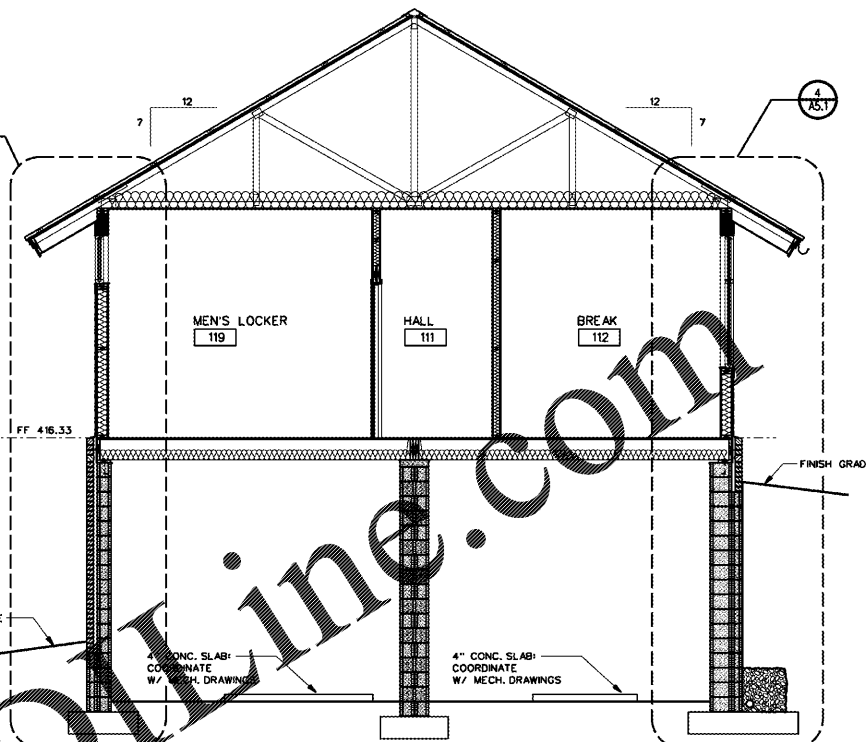


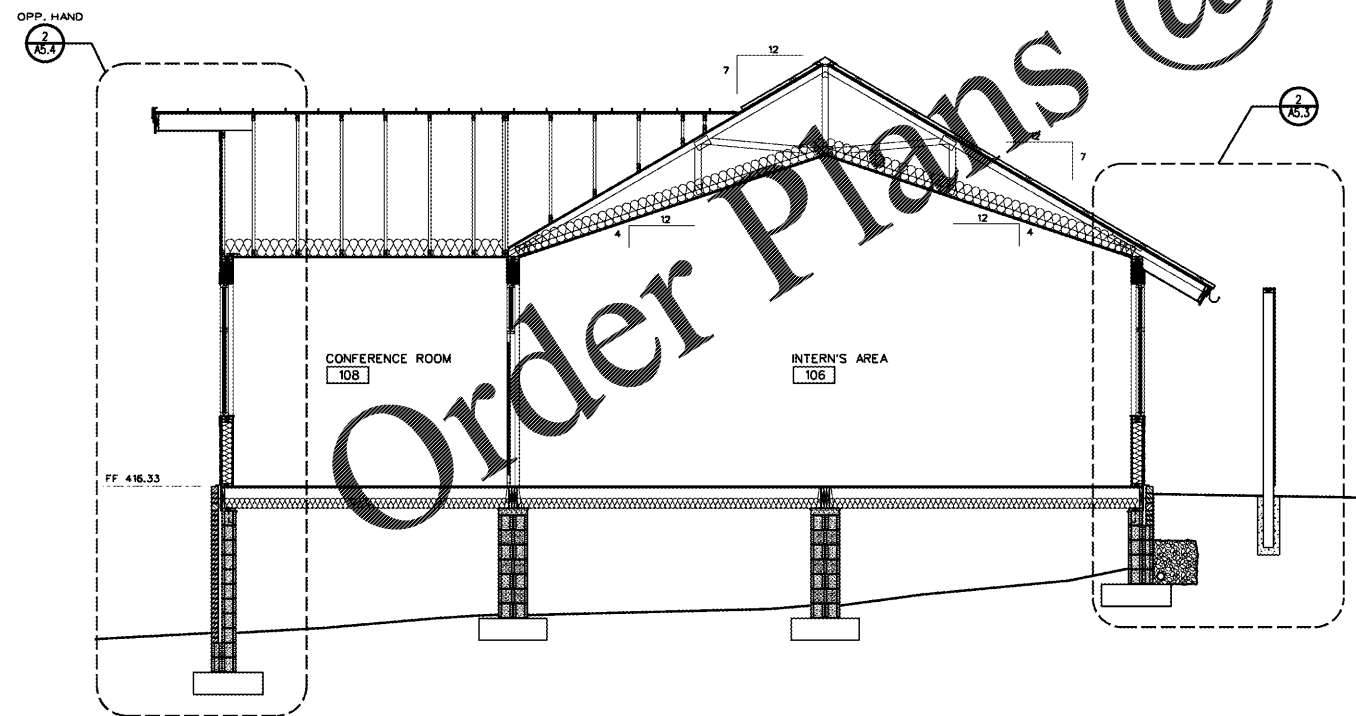
1 BUILDING SECTION  
SCALE: 1/4" = 1'-0"



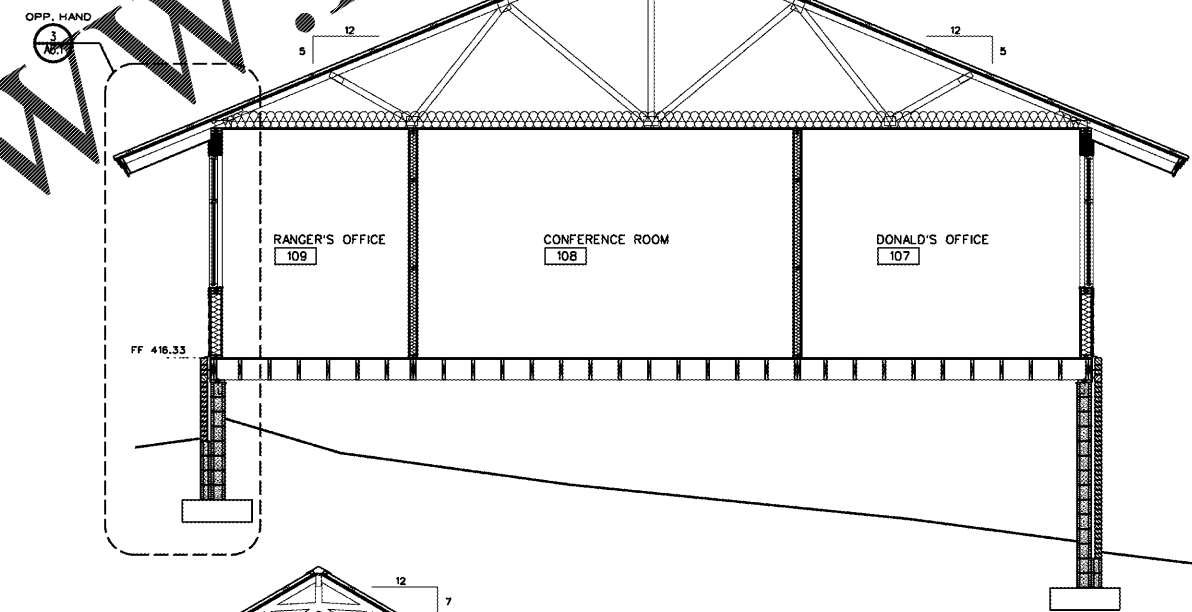
2 BUILDING SECTION  
SCALE: 1/4" = 1'-0"



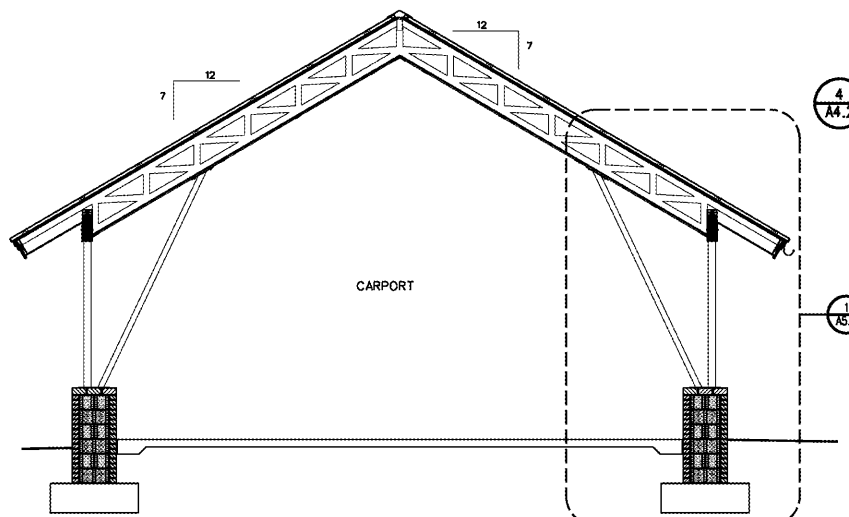
3 BUILDING SECTION  
SCALE: 1/4" = 1'-0"



5 BUILDING SECTION  
SCALE: 1/4" = 1'-0"



4 BUILDING SECTION  
SCALE: 1/4" = 1'-0"



6 BUILDING SECTION  
SCALE: 1/4" = 1'-0"



**DUNWODY/BEELAND,**  
architects, inc.

Web: [www.dunwodybeeland.com](http://www.dunwodybeeland.com)  
Macon, Georgia 31201  
T 478.742.3321  
F 478.743.6863

Dunwody/Beeland, Architects, Inc.  
This drawing may be utilized only for the purpose of constructing or installing the work shown thereon at the site of the work specified. Any other use of this drawing, including without limitation any reproduction or alteration of this drawing, without prior written approval of Dunwody/Beeland, Architects, Inc. is prohibited.

A NEW RANGER STATION  
AT CLAYSTONE PARK  
FOR MACON-BIBB COUNTY

MOSLEY DIXON ROAD MACON, GEORGIA

Revisions:

|  |  |
|--|--|
|  |  |
|  |  |
|  |  |
|  |  |

Sheet Title:  
Building Sections

Project #: 1819 Date: 12/20/19

**A4.2**