



DUNWOODY/BEELAND,
architects, inc.

Web: www.dunwoodybeeland.com
Macon: 1400 South Street, Suite 604
Macon, Georgia 31201
T 478.742.3321
F 478.743.8863

Dunwoody/Beeland, Architects, Inc.
This drawing may be utilized only for the
purpose of constructing or installing the
work shown thereon at the site of the work
specified. Any other use of this drawing,
including without limitation any
reproduction or alteration of this drawing,
without prior written approval of
Dunwoody/Beeland, Architects, Inc. is
prohibited.

**A NEW RANGER STATION
AT CLAYSTONE PARK
FOR MACON-BIBB COUNTY**

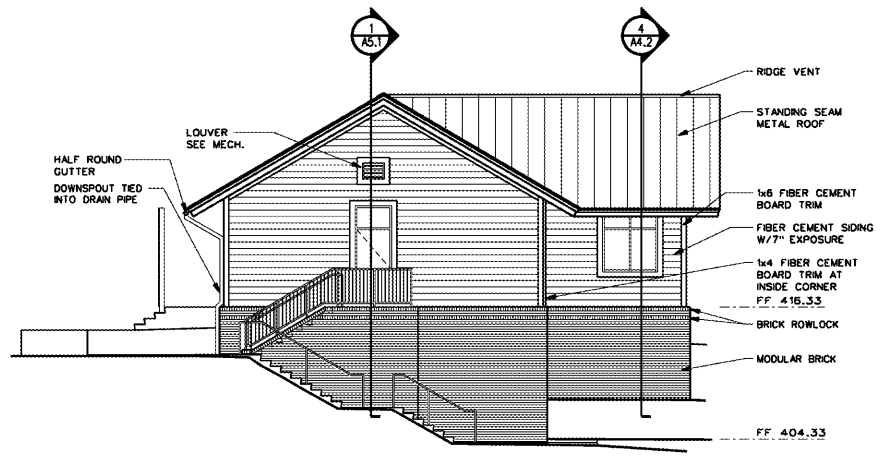
MOSLEY DIXON ROAD MACON, GEORGIA

Revisions:

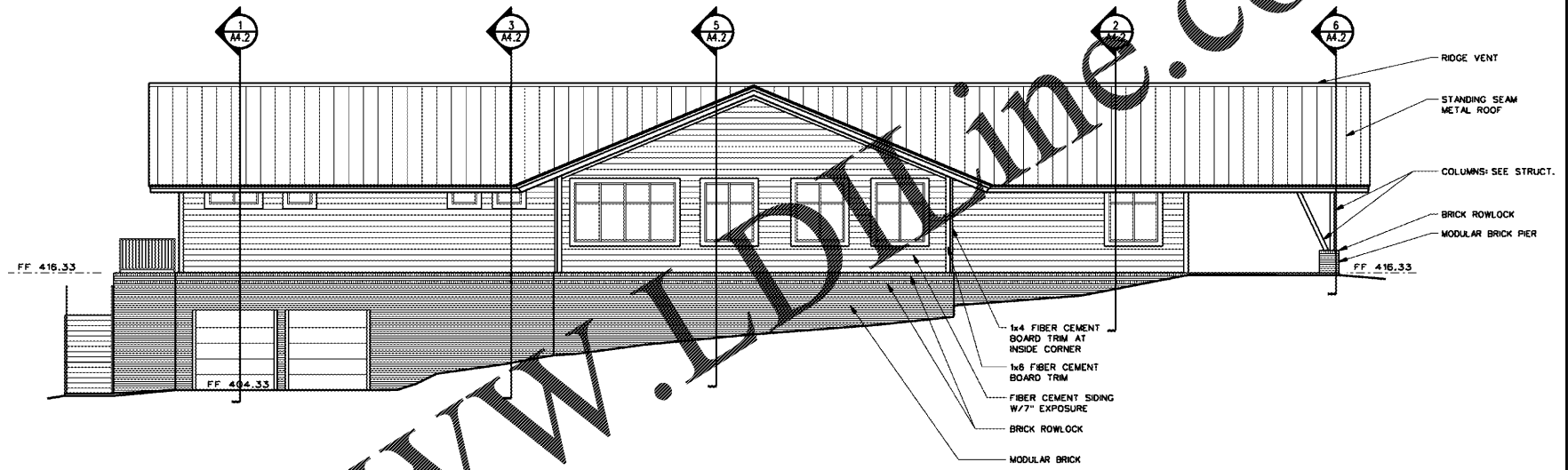
Sheet Title:
Exterior Elevations

Project #: 1819 Date: 12/20/19

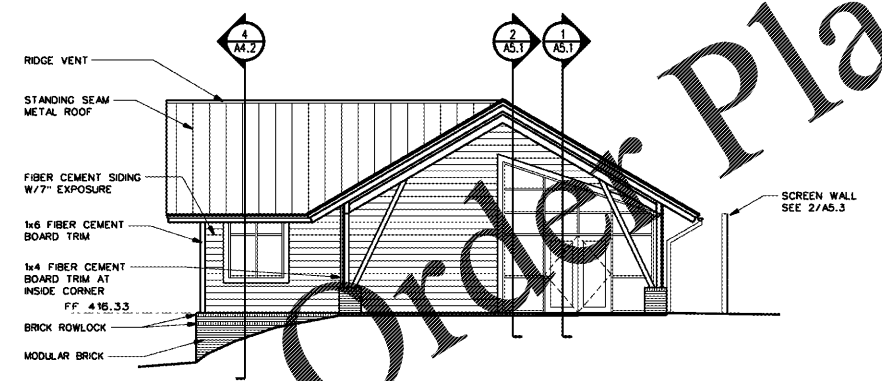
A4.1



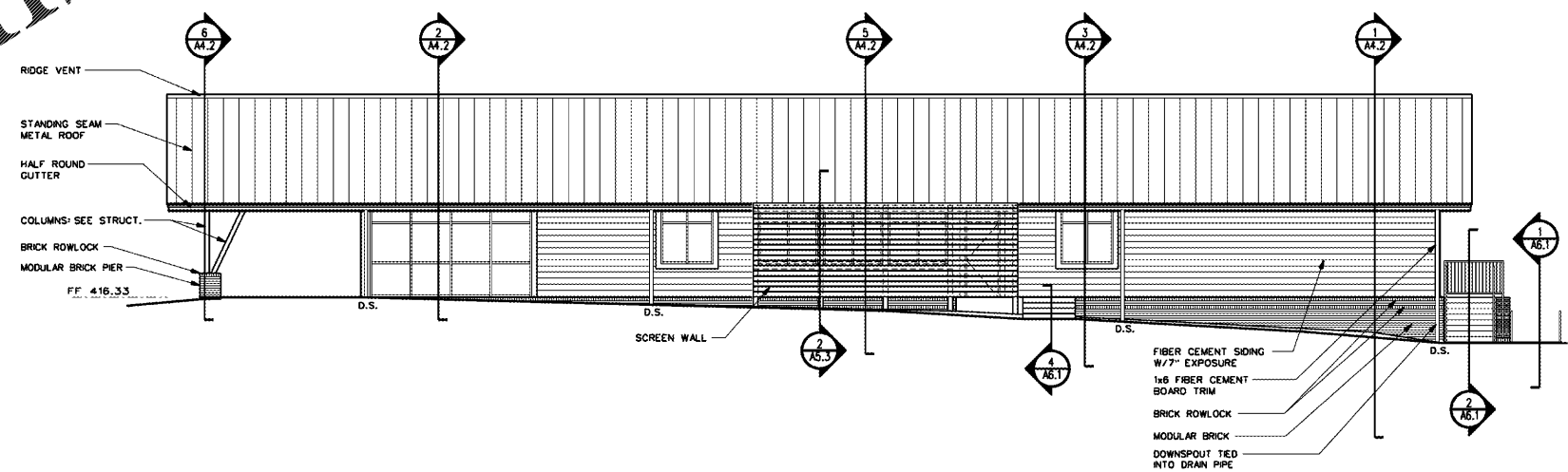
3 RIGHT SIDE ELEVATION
SCALE: 1/8" = 1'-0"



4 REAR ELEVATION
SCALE: 1/8" = 1'-0"



1 LEFT SIDE ELEVATION
SCALE: 1/8" = 1'-0"



2 FRONT ELEVATION
SCALE: 1/8" = 1'-0"

Order Plans @ www.IDOnline.com