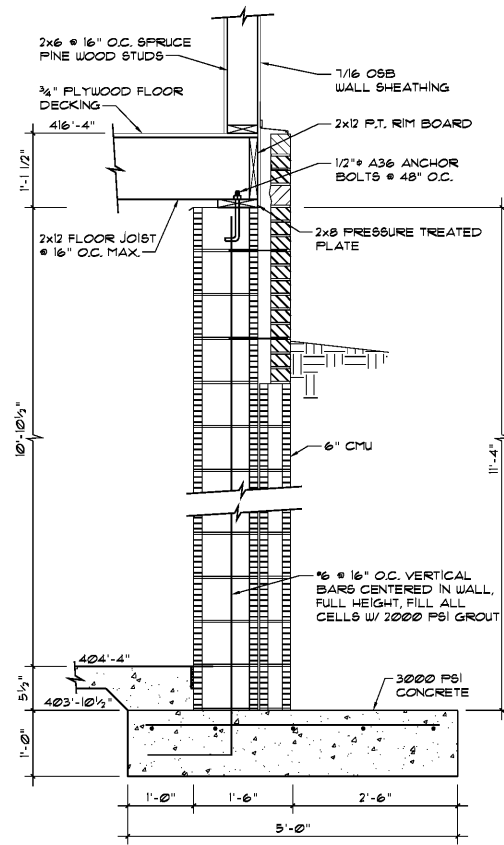
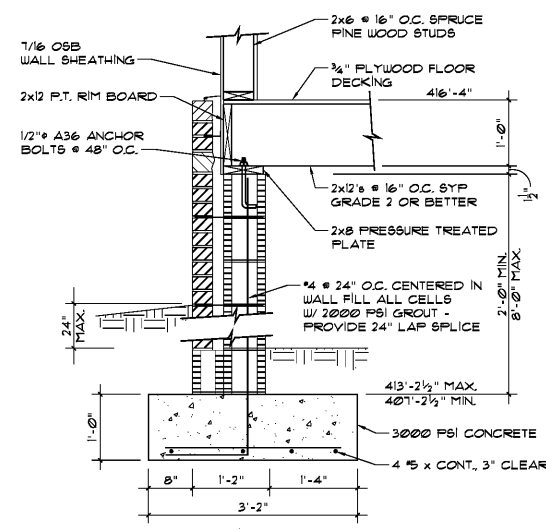


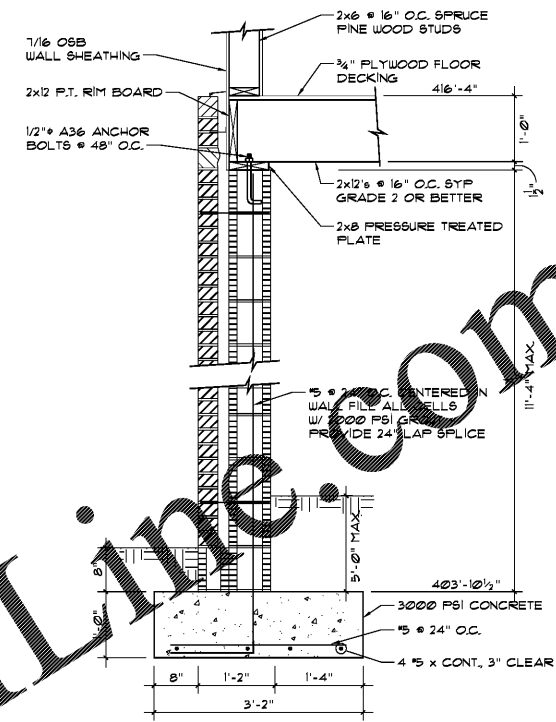
SECTION A
SCALE: 3/4"=1'-0" (SU)



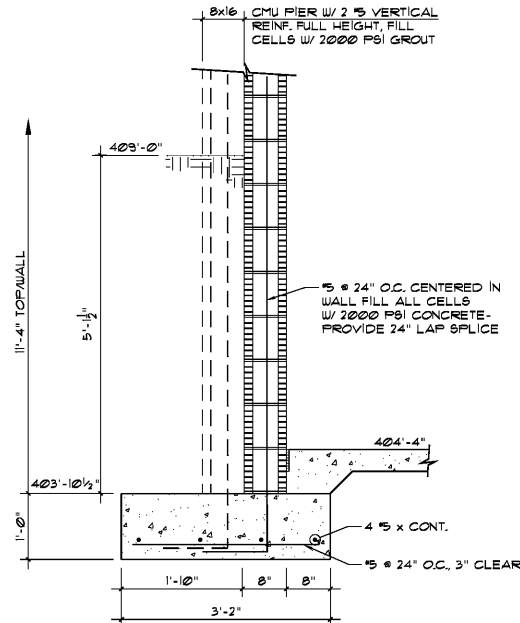
SECTION B
SCALE: 3/4"=1'-0" (SU)



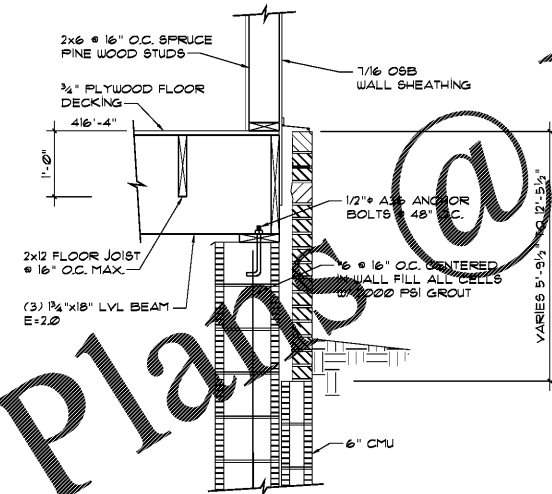
SECTION C
SCALE: 3/4"=1'-0" (SU)



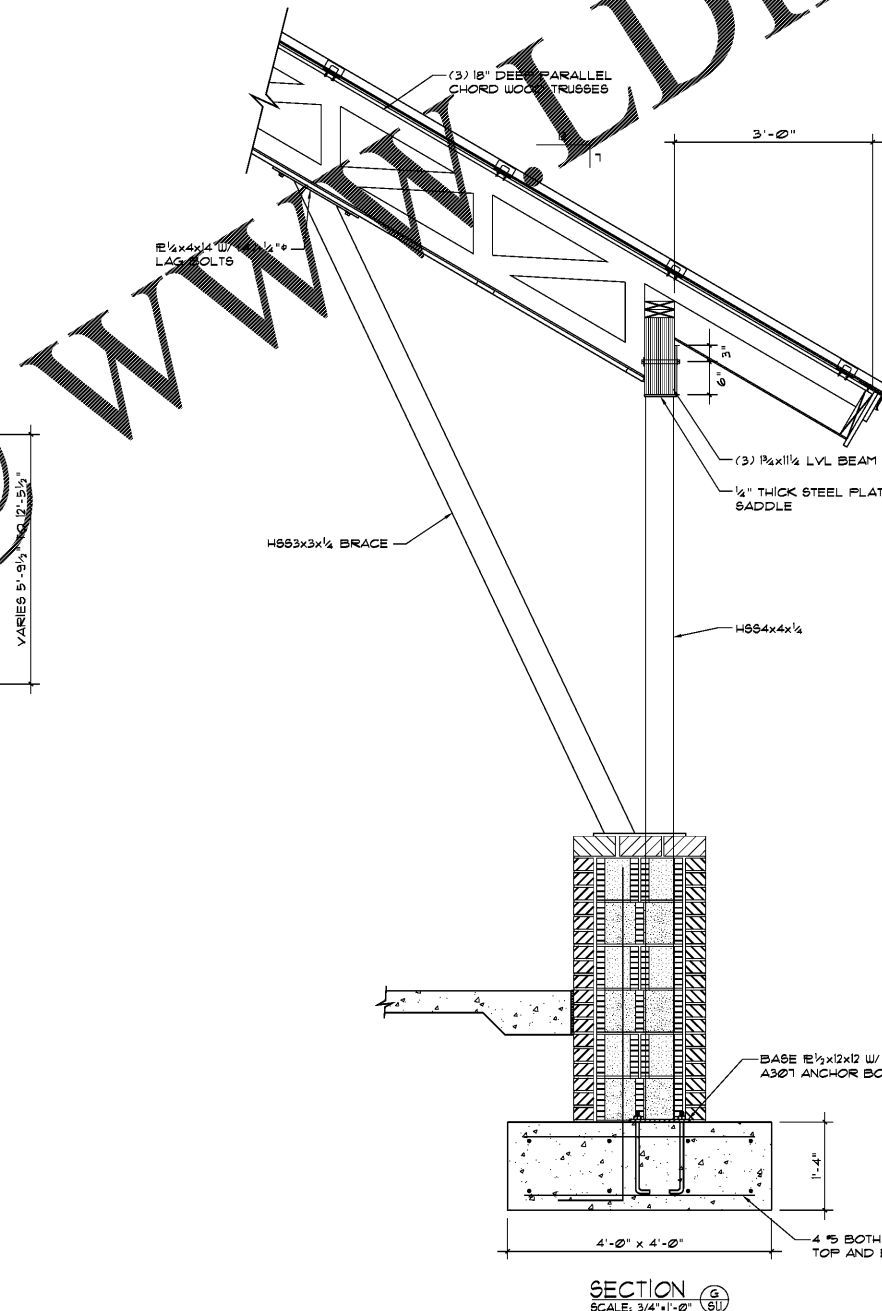
SECTION D
SCALE: 3/4"=1'-0" (SU)



SECTION E
SCALE: 3/4"=1'-0" (SU)



SECTION F
SCALE: 3/4"=1'-0" (SU)



SECTION G
SCALE: 3/4"=1'-0" (SU)

Order Plans @

DUNWODY/BEELEND,
architects, inc.

Web: www.dunwodybeeland.com
Macon, Georgia 31201
T 478.742.5321
F 478.743.0863

Dunwody/Beeland, Architects, Inc.
This drawing may be utilized only for the purpose of constructing or installing the work shown thereon at the site of the work specified. Any other use of this drawing, including without limitation any reproduction or alteration of this drawing, without prior written approval of Dunwody/Beeland, Architects, Inc. is prohibited.

A NEW RANGER STATION
AT CLAYSTONE PARK
FOR MACON-BIBB COUNTY

MOSLEY DIXON ROAD
MACON, GEORGIA

Revisions:

Sheet Title:

Foundation and Floor Framing Sections

Project #: 1819 Date: ???/??/??

KEA
Kornegay
Engineering
Inc.
Structural Consultant
363 Pierce Avenue
Suite 202
Macon, GA 31204
(478)745-6161 ph
Project No: 19-213

S1.1