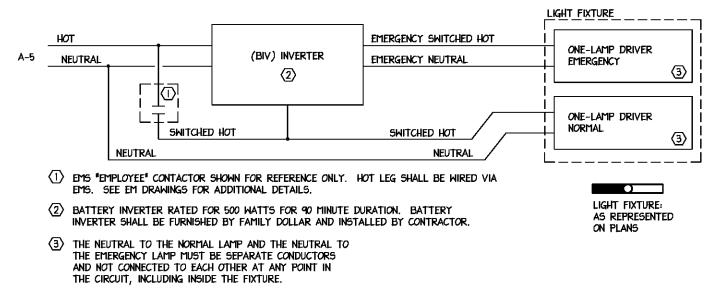


LIGHT FIXTURES SHALL BE SUPPLIED BY FAMILY DOLLAR AND INSTALLED BY CONTRACTOR.

LIGHTING FIXTURE SCHEDULE						
FIXTURE	DESCRIPTION	NUMBER AND TYPE OF LAMPS	WATTS	VOLTS	MOUNTING	NOTES
	8' STRIP LIGHT	(2) 18W LED LINEAR T8 TUBES	36	120	NOTE 6	1,2,3,4,5,6
	8' STRIP EMERGENCY LIGHT WIRE ON INVERTER SYSTEM REFER TO DETAIL 2/E-3.	(2) 18W LED LINEAR T8 TUBES	36	120	NOTE 6	1,2,3,4,5,6
	8' STRIP EMERGENCY LIGHT WITH INTEGRAL 90 MINUTE BATTERY BACKUP	(2) 18W LED LINEAR T8 TUBES	36	120	NOTE 6	1,2,3,4,5,6
	4' STRIP LIGHT	(2) 18W LED LINEAR T8 TUBE	36	120	NOTE 6	1,2,3,4,5,6
	4' STRIP EMERGENCY LIGHT WITH INTEGRAL 90 MINUTE BATTERY BACKUP	(2) 18W LED LINEAR T8 TUBE	36	120	NOTE 6	1,2,3,4,5,6
	INTERIOR EMERGENCY LIGHT (2 HEADS) WITH INTEGRAL 90 MINUTE BATTERY BACKUP	(2) 1W LED	2	120	SURFACE	1,2,4
	EXIT SIGN WITH SINGLE FACE WITH INTEGRAL 90 MINUTE BATTERY BACKUP	LED	5	120	CEILING OR HALL	1,2,4
	EXIT SIGN WITH SINGLE FACE WITH INTEGRAL 90 MINUTE HI-OUTPUT BATTERY BACKUP. CONNECT TO EXTERIOR REPIOTE HEADS.	LED	5	120	CEILING OR HALL	1,2,4
	EXTERIOR EMERGENCY LIGHT REPIOTE HEADS CONNECT TO EXIT SIGN HI-OUTPUT BATTERY BACKUP.	(2) 1W LED	2	120	SURFACE	1,2,4
	EXTERIOR HALL PAK LIGHT NEL-NP170	LED	70.8	120	HALL HEIGHT PER ARCHITECTURAL ELEVATIONS	1,2,4

- NOTES:
- ALL LAMPS SHALL BE PROVIDED WITH LIGHT FIXTURES.
 - CONTRACTOR SHALL COORDINATE VOLTAGE OF LIGHT FIXTURE WITH CIRCUIT VOLTAGE.
 - LIGHT FIXTURES DENOTED BY "NIGHT LIGHT" OR "NL" SHALL REMAIN ON 24/7.
 - CONTRACTOR SHALL PROVIDE ALL NECESSARY SUPPORT HARDWARE AND ADAPTERS FOR EACH LIGHT FIXTURE UNLESS NOTED OTHERWISE.
 - COORDINATE LIGHT FIXTURE MOUNTING WITH CEILING TYPE. REFER TO ARCHITECTURAL PLANS.
 - LIGHT FIXTURES IN SALES AREA SHALL BE SURFACE MOUNTED TO BOTTOM OF LAY-IN CEILING AT 11'-10". LIGHT FIXTURES IN THE STOCK ROOM SHALL BE SUSPENDED FROM STRUCTURE USING CADDY SPEED LINK. PENTAIR CADDY SPEED LINK UNIVERSAL SUPPORT SYSTEM INCLUDES LOCKING DEVICE, WIRE ROPE AND SPECIALTY END FITTING. CADDY SPEED LINK SUPPORT SYSTEM SHALL BE FURNISHED WITH LIGHT FIXTURES. FOR STOCK ROOM, SUSPEND BOTTOM OF LIGHT FIXTURE TO 12'-0" A.F.F. FOR RESTROOMS AND HALL, LIGHT FIXTURES SHALL BE SURFACE MOUNTED TO BOTTOM OF CEILING. FOR LIGHT FIXTURES SURFACE MOUNTED TO LAY-IN CEILING, ATTACH LIGHT FIXTURE TO T-BAR PER NEC 40-36.



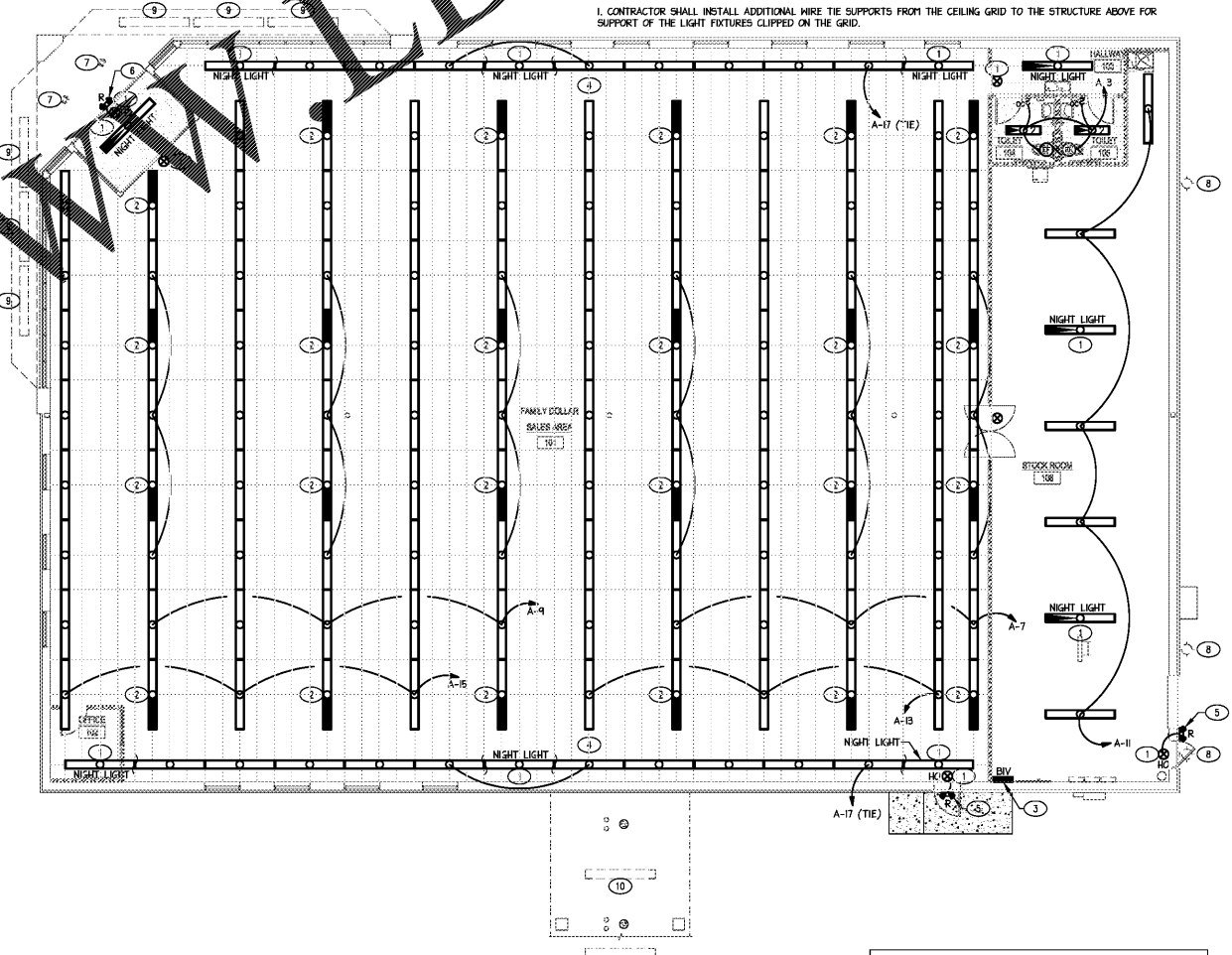
2 SCHEMATIC DIAGRAM: INVERTER WIRING (BIV)
SCALE: NONE FOR "EMPLOYEE" LIGHTING CIRCUIT A-5

ELECTRICAL LIGHTING SYMBOL LEGEND	
	ARROWHEAD INDICATES HOVERIN TO PANEL NOTED.
	SINGLE POLE SWITCH, 20A, 20/277V VOLT, 40" A.F.F. TO CENTER.
	"T" INDICATES 120V, 20A FACTOR RATED TOGGLE SWITCH.
	OCCUPANCY SENSOR SWITCH WITH OVERRIDE SWITCH, MOUNTED 46" A.F.F. TO CENTER. PROVIDE SENSOR SWITCH MODEL INSD-MH.
	CEILING EXHAUST FAN. PROVIDE DISCONNECTING MEANS AS REQUIRED BY CODE.

- TAGGED NOTES (LIGHTING PLAN):
- ALL EXIT SIGNS, NIGHT LIGHTS, AND NIGHT LIGHTS WITH INTEGRAL BATTERY BACKUP SHALL BE CIRCUITED TO PANEL "A", CIRCUIT 1. WIRING NOT SHOWN FOR DRAWING CLARITY.
 - NOTED FIXTURE SHALL HAVE ONE LAMP CIRCUITED TO INVERTER AND ONE LAMP CIRCUITED TO NORMAL POWER. CIRCUIT A-5 SHALL BE USED FOR THESE FIXTURES AND SHALL BE ON "EMPLOYEE" CONTACTOR OF THE ENERGY MANAGEMENT SYSTEM. SEE INVERTER WIRING DIAGRAM ON THIS SHEET.
 - BATTERY INVERTER FURNISHED BY FAMILY DOLLAR AND INSTALLED BY CONTRACTOR. REFER TO DETAIL 2/E-3 SHEET FOR WIRING INFORMATION. INSTALL PER MANUFACTURER'S INSTALLATION INSTRUCTIONS.
 - DISTANCE BETWEEN END OF ROOM AND PERIMETER LIGHTS SHALL BE MAXIMUM 60".
 - EXTERIOR REPIOTE EMERGENCY LIGHT (2 HEADS) MOUNTED CENTERED ABOVE DOOR AT 7'-0". EXTERIOR EMERGENCY LIGHT SHALL BE WIRED TO EMERGENCY EXIT LIGHT HI-OUTPUT BATTERY BACKUP.
 - EXTERIOR REPIOTE EMERGENCY LIGHT (2 HEADS) MOUNTED TIGHT TO ENTRY SLOPE. EXTERIOR EMERGENCY LIGHT SHALL BE WIRED TO NEW EMERGENCY EXIT SIGN HI-OUTPUT BATTERY BACKUP.
 - EXISTING RECESSED CAN LIGHT FIXTURE TO REMAIN. EXISTING CIRCUIT SHALL BE WIRED THRU NEW EMS AND CIRCUIT RE-TERMINATED TO PANEL A. CLEAN AND RELACE TO BRING TO GOOD WORKING ORDER. PROVIDE LED REPLACEMENT LAMPS IF AVAILABLE FOR EXISTING LIGHT FIXTURE. UPDATE PANEL DIRECTORY ACCORDINGLY.
 - EXISTING HALL PAK LIGHT FIXTURE TO REMAIN. EXISTING CIRCUIT SHALL BE WIRED THRU NEW EMS AND CIRCUIT RE-TERMINATED TO PANEL A. CLEAN AND RELACE TO BRING TO GOOD WORKING ORDER. PROVIDE LED REPLACEMENT LAMPS IF AVAILABLE FOR EXISTING LIGHT FIXTURE. UPDATE PANEL DIRECTORY ACCORDINGLY.
 - EXISTING 8' LENSED LINEAR RECESSED LIGHT FIXTURE WITH 2 8' FLUORESCENT LAMPS (2 LAMPS PER CROSS-SECTION) TO REMAIN. THE CONTRACTOR SHALL REPIOTE THE EXISTING FLUORESCENT BULBS AND BALLAST(S) AND INSTALL A LED CONVERSION KIT FURNISHED BY FAMILY DOLLAR'S SUPPLIER (NEL). THE EXISTING 8' FIXTURES WITH 2 LAMPS SHALL BE CONVERTED TO A 2 LAMP LED (2 LAMP END TO END). CLEAN FIXTURE HOUSING, LENS AND RE-LAMP FIXTURE WITH NEW LED LAMPS. LED LAMPS SHALL BE FURNISHED BY NEL. THIS LIGHT FIXTURE SHOULD HAVE 2 LED LAMPS AFTER CONVERSION. EXISTING CIRCUIT SHALL BE WIRED THRU NEW EMS AND CIRCUIT RE-TERMINATED TO PANEL A. UPDATE PANEL DIRECTORY ACCORDINGLY.
 - EXISTING 8' LENSED LINEAR SURFACE MOUNTED STRIP LIGHT FIXTURE WITH 2 8' FLUORESCENT LAMPS (2 LAMPS PER CROSS-SECTION) TO REMAIN. THE CONTRACTOR SHALL REPIOTE THE EXISTING FLUORESCENT BULBS AND BALLAST(S) AND INSTALL A LED CONVERSION KIT FURNISHED BY FAMILY DOLLAR'S SUPPLIER (NEL). THE EXISTING 8' FIXTURES WITH 2 LAMPS SHALL BE CONVERTED TO A 2 LAMP LED (2 LAMP END TO END). CLEAN FIXTURE HOUSING, LENS AND RE-LAMP FIXTURE WITH NEW LED LAMPS. LED LAMPS SHALL BE FURNISHED BY NEL. THIS LIGHT FIXTURE SHOULD HAVE 2 LED LAMPS AFTER CONVERSION. EXISTING CIRCUIT SHALL BE WIRED THRU NEW EMS AND CIRCUIT RE-TERMINATED TO PANEL A. UPDATE PANEL DIRECTORY ACCORDINGLY.

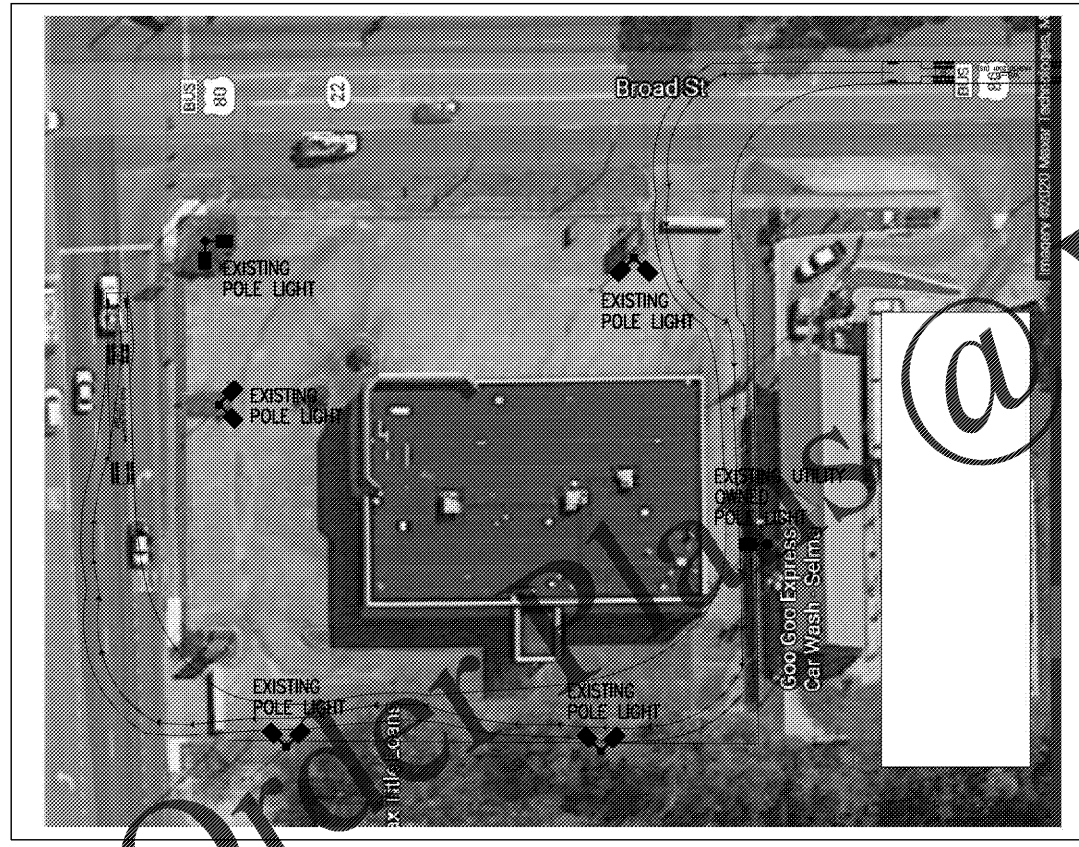
GENERAL NOTES:

- CONTRACTOR SHALL INSTALL ADDITIONAL WIRE TIE SUPPORTS FROM THE CEILING GRID TO THE STRUCTURE ABOVE FOR SUPPORT OF THE LIGHT FIXTURES CLIPPED ON THE GRID.



1 ELECTRICAL LIGHTING PLAN
1/8"=1'-0"

LIGHTING DEMOLITION NOTES:
REMOVE ALL EXISTING INTERIOR LIGHTING FIXTURES, EXIT SIGNS AND EMERGENCY LIGHTING NOT SHOWN AS EXISTING TO REMAIN OR NOTED AS EXISTING TO REMAIN. REMOVE ALL ASSOCIATED WIRING AND DEVICES. FIELD COORDINATE FINAL SCOPE OF DEMOLITION WORK WITH GC PRIOR TO BEGINNING CONSTRUCTION. ALL EXTERIOR LIGHTING SHALL REMAIN AND/OR BE REPLACED AS INDICATED ON PLANS.



3 SITE LIGHTING PLAN
NO SCALE

SITE POLE LIGHTING NOTE:
ALL EXISTING SITE POLE LIGHTING SHALL BE HOOKED-UP, RELAMPED (ALL FIXTURES), FULLY TESTED AND REPAIRED AS REQUIRED, AND FULLY OPERATIONAL PRIOR TO COMPLETION. PROVIDE LED REPLACEMENT LAMPS IF AVAILABLE FOR EXISTING LIGHT FIXTURE. RE-WIRE EXISTING CIRCUITS THRU NEW EMS SITE CONTACTORS AND CIRCUITS SHALL BE RE-TERMINATED TO PANEL A. UPDATE PANEL DIRECTORY ACCORDINGLY.

PYLON SIGN NOTE:
ALL EXISTING PYLON SIGN LIGHTING SHALL BE HOOKED-UP, RELAMPED (ALL FIXTURES), FULLY TESTED AND REPAIRED AS REQUIRED, AND FULLY OPERATIONAL PRIOR TO COMPLETION. PROVIDE LED REPLACEMENT LAMPS IF AVAILABLE FOR EXISTING LIGHT FIXTURE. RE-WIRE EXISTING CIRCUITS THRU NEW EMS SITE CONTACTORS AND CIRCUITS SHALL BE RE-TERMINATED TO PANEL A. UPDATE PANEL DIRECTORY ACCORDINGLY.

NOTE:
ALL EXISTING PYLON SIGN LIGHTING, BUILDING SIGN LIGHTING, SITE POLE LIGHTING, BUILDING MOUNTED LIGHTING AND UNDER CANOPY LIGHTING SHALL BE RE-WIRED THRU NEW EMS SITE CONTACTORS AND CIRCUITS RE-TERMINATED TO PANEL A. UPDATE PANEL DIRECTORY ACCORDINGLY. SEE PANEL A SCHEDULE FOR CIRCUITS DESIGNATED FOR EXTERIOR SIGNAGE AND LIGHTING.

ENGINEER OF RECORD:
J. CORBETT THOMAS, P.E.
2100 DILWORTH RD EAST
CHARLOTTE, NC 28203
PH (704) 333-1020
Corbett@CorbettEngineering.com

ALABAMA LICENSE
PROFESSIONAL ENGINEER
CORBETT THOMAS
2/4/20

DATE	DESIGNED	DRAWN	CHECKED
DATE	PROJECT	DESCRIPTION	REVISIONS

RRMM ARCHITECTS, P.C.
1317 Executive Blvd, Suite 200
Chesapeake, VA 23320
(757) 552-5502 Fax: (757) 552-5881

FAMILY DOLLAR STORE, FDS #791801
SEMA AL
ELECTRICAL UPFIT LIGHTING PLAN AND DETAILS

sheet E-3