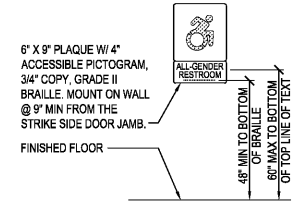
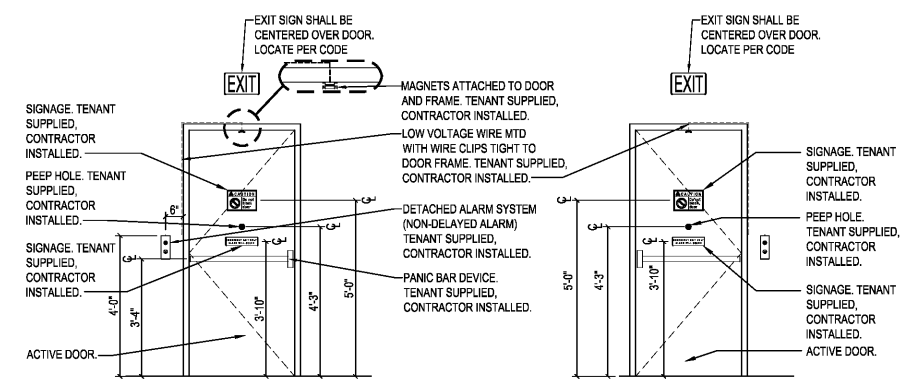


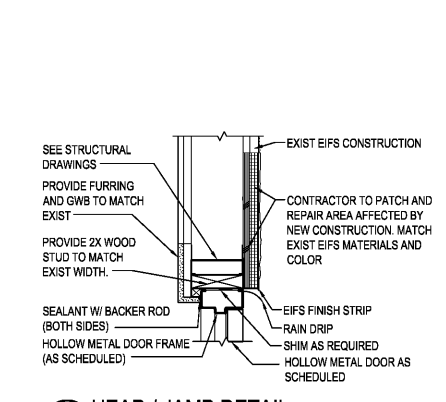
**DOOR TYPES**  
SCALE: 1/4" = 1'-0"



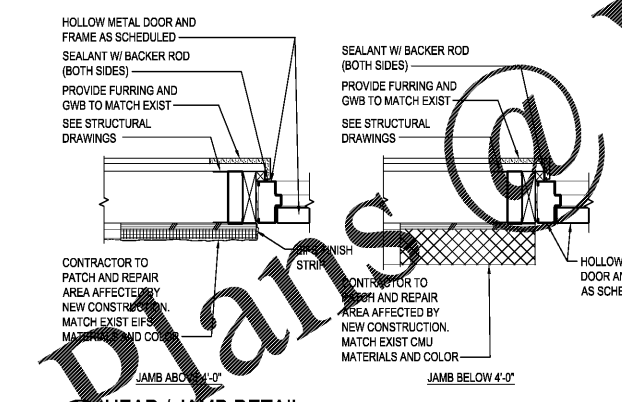
**A SIGNAGE ELEVATION**  
SCALE: NTS



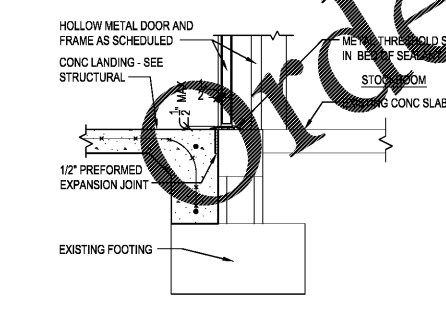
**B EGRESS DOOR ELEVATION**  
SCALE: 1/2" = 1'-0"



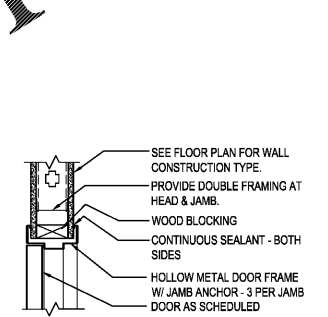
**1 HEAD / JAMB DETAIL**  
SCALE: 1 1/2" = 1'-0"



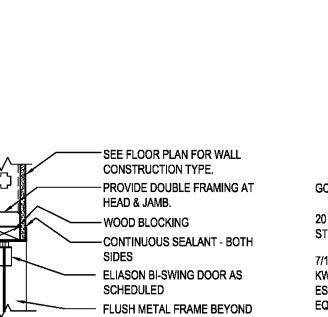
**2 HEAD / JAMB DETAIL**  
SCALE: 1 1/2" = 1'-0"



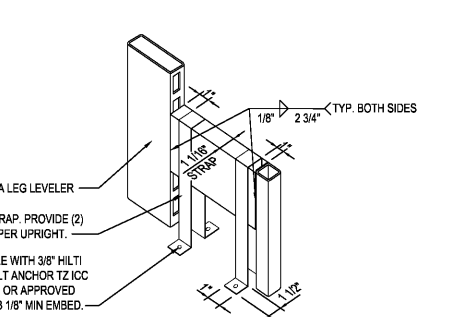
**3 SILL AT REAR DOOR**  
SCALE: 1" = 1'-0"



**4 HEAD / JAMB DETAIL**  
SCALE: 1 1/2" = 1'-0"



**5 HEAD / JAMB DETAIL**  
SCALE: 1 1/2" = 1'-0"



**6 TYPICAL GONDOLA ANCHORAGE**  
SCALE: 3/4" = 1'-0" (SINGLE SIDED WALL UNIT)

**FINISH SCHEDULE**

ROOM #	SPACES	FLOORS	BASES	WALLS	CEILING	NOTES
101	SALES	- POLISHED CONCRETE	4" VINYL	GWB - PAINT PT-1 / FRP TO 4'-0"	ACT	3.4, 5.7, 11.13
102	OFFICE	POLISHED CONCRETE	4" VINYL	GWB-PAINT PT-3	-	3.5, 7.8, 12
103	HALLWAY	POLISHED CONCRETE	4" VINYL	GWB-PAINT PT-2 / FRP TO 4'-0"	ACT	3.4, 5.7
104	TOILET	SHEET VINYL	SHEET VINYL	GWB-PAINT PT-3 / FRP	GWB	2.3, 5.6, 9
105	TOILET	SHEET VINYL	SHEET VINYL	GWB-PAINT PT-3 / FRP	GWB	2.3, 5.6, 9
106	STOCKROOM	- SEALED CONCRETE - 1/2" PAINTED AROUND PERIMETER, COLOR PT-8	-	GWB-PAINT PT-3 / FRP	-	3.6, 10
107	VESTIBULE	ENTRY CARPET TILE	4" VINYL	GWB-PAINT PT-3 / ALUM STOREFRONT	EXIST GWB - PAINT PT-3	1.3

**PAINT FINISH SCHEDULE**

NO.	TYPE	COATS	BENJAMIN MOORE	BM-LOW VOC BASE PRODUCT
PT-1	EGGSHELL	2	"FD BM #2019-70 - LIGHTING WHITE"	SUPER HIDE ZERO VOC LATEX - 357
PT-2	SEMI-GLOSS ENAMEL	2	"FD BM #2019-70 - LIGHTING WHITE"	SUPER HIDE ZERO VOC LATEX - 358
PT-3	SEMI-GLOSS ENAMEL	2	"FD BM WHITE"	TOUGH SHIELD ACRYLIC GLOSS - TY 43
PT-7	SEMI-GLOSS	2	"FD BM GREY"	TOUGH SHIELD ACRYLIC GLOSS - TY 43
PT-8	SEMI-GLOSS	2	"FD BM WHITE"	TOUGH SHIELD ACRYLIC GLOSS - TY 43

**FINISH NOTES**

- CARPET TILE - MANUFACTURED BY PORTICO SYSTEMS AND TENANT SUPPLIED. CONTRACTOR INSTALLED. INSTALL TILES QUARTER TURNED AND PER TENANT'S CRITERIA. ENTRY TILE: DOMINATOR LP TILE - ANTHRACITE #1593. CONTRACTOR SHALL PREPARE FLOOR SURFACE AND COORDINATE CARPET INSTALLATION W/ CARPET INSTALLER.
- TOILET COVE BASE: 4" HIGH FLASH COVE BASE WITH MATCHING TERMINATION STRIP ADHERED TO FRP.
- VINYL COVE BASE: 4" HIGH TOPSET COVE VINYL - ARSTRONG, BLACK VINYL BASE ON EXPOSED AREAS ONLY IN SALES ROOM (NOT BEHIND GONDOLAS AND FREEZER / COOLERS).
- FRP (FIBERGLASS REINFORCED PANEL) - GLASBORO # 85 - WHITE W/ PEBBLED EMBOSSED FINISH, BY CRANE COMPOSITES OR EQUAL; IN TOILET ROOM FROM FLOOR TO 8'-0" AFF SHALL BE WHITE COLOR. FRP TO 8'-0" AFF IN STOCKROOM BEHIND MOP SINK AND UTILITY CABINET ONLY. FRP ON SALES / HALLWAY TO 4'-0" AFF (WHERE NOTED ON ELEVATIONS ON SALES) SHALL BE PAINT PT-3 COLOR WITH "H" CHANNEL TRIM CAP AND "H" CHANNEL PANEL CONNECTORS.
- SEALER - CLEAR ACRYLIC SEALER BY MASTERKURE, CC 300SB OR FDS APPROVED SUBSTITUTE.
- POLISHED CONCRETE FLOOR PER MANUFACTURE SPECIFICATIONS BY TENANT'S VENDOR. COORDINATE WITH TENANT.
- HOLLOW METAL DOORS AND FRAMES TO BE PRIMED & PAINTED IN FIELD WITH 1 COAT PRIMER AND 2 COATS COLOR TO MATCH WALL SURFACE OF DOOR FACING.
- SHEET VINYL: ARMSTRONG-CONNECTION CORLON "PORCELAIN" #88724.
- 12" STRIPE AROUND PERIMETER & AROUND COLUMNS. COLOR: PT-8.
- EXPOSED STEEL COLUMNS TO BE PAINTED PT-2. ROUND COLUMNS ARE NOT TO RECEIVE COVE BASE.
- PROVIDE PERFORMED COUNTER WITH WHITE HIGH PRESSURE LAMINATE FINISH. MOUNT TO WALLS. FILING CABINETS PROVIDED BY TENANT. SEE ENLARGED OFFICE PLAN AND OFFICE ELEVATION.
- SALES AREA TO RECEIVE LEVEL 4 FINISH. PROVIDE FINISH TO 1'-0" BEHIND FREEZER / COOLER AND GONDOLA. TYPICAL FINISH TO BE ELSE. CONTRACTOR SHALL ALLOW 72 HOUR CURE TIME.

**DOOR SCHEDULE**

#	DOORS			MATERIAL	DETAILS			FR	HDW NOTES	DOOR NOTES
	W	H	T		TYPE	HEAD	JAMB			
100	3'-0"	6'-8"	1 3/4"	SOLID CORE WOOD	C	-	-	-	100A	1.2, 3
200	PR 3'-0"	7'-0"	.063"	ALUM / ACRYLIC	D	-	-	-	200A	5.9, 11
300	3'-0"	6'-8"	1 3/4"	SOLID CORE WOOD	C	-	-	-	300C	1.2, 3, 8
400	6'-0"	8'-0"	-	EXIST OVERHEAD	-	-	-	-	-	6
401	3'-0"	7'-0"	1 3/4"	EXIST HOLLOW METAL	B	-	-	-	400B	2.3, 4, 11
402	3'-0"	7'-0"	1 3/4"	HOLLOW METAL	B	-	-	-	400B	2.3, 4, 10, 11
500	PR 3'-0"	7'-0"	1 3/4"	ALUM & GLASS	A	-	-	-	500D	2, 4, 7

**DOOR NOTES**

- ALL DOOR FRAME, CASED OPENING AND HARDWARE MATERIAL WILL BE SUPPLIED BY TENANT. GC IS RESPONSIBLE FOR INSTALLATION.
- DOOR TO MEET ADA DOOR OPENING PRESSURE GUIDELINES, MAX. 5 LBS (INT) & 10-15 LBS (EXTERIOR)
- ALL DOORS AND FRAMES ARE TO BE PAINTED IN FIELD TO MATCH WALL SURFACE ON EACH SIDE PER EXTERIOR AND INTERIOR FINISH SCHEDULES.
- CONTRACTOR TO PROVIDE AND INSTALL DOOR SWEEP ON ALL EXTERIOR DOORS TO PREVENT WATER, WIND, AND DEBRIS INFILTRATION.
- ELIASON DOOR: G.C. IS RESPONSIBLE FOR INSTALLING ELIASON DOOR AND HARDWARE TO PREVENT METAL CONTACT. ALL DOORS TO BE FACTORY FINISHED PER DOOR SCHEDULE.
- EXIST OVERHEAD DOOR - CONTRACTOR TO ENSURE GOOD WORKING ORDER AND PROVIDE "PASP" FOR TENANT'S LOCK.
- PROVIDE SIGN POSITION ON THE EGRESS SIDE, ON OR ADJACENT TO THE DOOR STATING: "THIS DOOR TO REMAIN UNLOCKED WHEN BUILDING IS OCCUPIED." THE SIGN SHALL BE IN LETTERS 1" HIGH ON A CONTRASTING BACKGROUND.

**HARDWARE NOTES**

HOW # 100A

- 1 1/2" PAIR HINGES: STANDARD WEIGHT
- 1 MECHANICAL PULL/BUTTON BACKSET WITH LEVER HANDLE
- 1 CLOSER
- 1 FLOOR STOP

HOW # 200A

- 1 LWP 3" VINYL TRAFFIC DOOR EASY SWEEP HINGE SYSTEM
- 9" X 30" CLEAR ACRYLIC WINDOW
- 1 1/2" HOLLOW METAL FRAME - DRYWALL

HOW # 300C

- 1 1/2" PAIR HINGES: STANDARD WEIGHT
- 1 PRIVACY SET WITH LEVER HANDLE
- 1 CLOSER (FLOORWALL STOP IF SHIPPED WITH HARDWARE)

HOW # 400B

- 1 1/2" PAIR HINGES: 4 1/2" HEAVY WEIGHT, NON-REMOVABLE PINS
- 1 NON-ALARMED, NON-KEYED PANIC BAR DEVICE WITH STAND ALONE ALARM REFER TO DOOR ALARM MOUNTING DETAIL
- 1 OVERHEAD HOLDERS/STOPS
- 1 PEEP HOLE
- 1 ALUM THRESHOLD (1/2" MAX HEIGHT)
- 1 SWEEP
- 1 WEATHER STRIP
- 1 RAIN DRIP

HOW # 500D

- EXISTING AUTOMATIC SLIDING DOOR
- CONTRACTOR TO VERIFY GOOD WORKING ORDER. NOTIFY TENANT PRIOR TO MAKING ANY NECESSARY REPAIRS.
- NOTE: DOOR SHALL OPEN UPON APPROACH OF PERSON. IN EVENT OF POWER FAILURE, DOOR SHALL BE CAPABLE OF BEING OPENED MANUALLY AND SWING OR SLIDE TO A FULL OPEN POSITION WHEN LATCH SIDE OF DOOR IS SUBJECTED TO 5 LBS (22.2 N) FORCE. DOOR SHALL ALSO COMPLY FULLY WITH ANSI/BHMA A156.10.

**GENERAL HARDWARE NOTES**

- THRESHOLDS AT EGRESS DOORS SHALL BE NO MORE THAN 1/2" (MAX) HEIGHT AFF.
- ALL DOOR HANDLES, PULLS, LATCHES, LOCKS AND OTHER OPERATING DEVICES SHALL BE INSTALLED 34" (MIN) TO 44" (MAX) AFF AND SHALL BE "SINGLE-HANDED" OPERABLE WITHOUT USE OF KEY OR SPECIAL KNOWLEDGE.
- WHERE EGRESS DOORS ARE USED IN PAIRS, THE UNLATCHING OF THE LEAF SHALL NOT REQUIRE MORE THAN ONE (1) OPERATION AS MENTIONED IN GENERAL HARDWARE NOTE #2 ABOVE.
- CONTROLS AND OPERATING MECHANISMS SHALL BE LEVER-TYPE (OR EQUAL) PROVIDING OPERATION WITH ONE HAND AND NOT REQUIRE TIGHT GRASPING, PINCHING, OR TWISTING OF THE WRIST.
- DOORS EQUIPPED WITH CLOSERS SHALL BE ADJUSTED SO THAT THE SWEEP PERIOD FROM AN OPEN POSITION OF 70 DEGREES WILL TAKE AT LEAST 3 SECONDS TO MOVE TO A POINT 3" FROM THE LATCH, MEASURED FROM THE LEADING EDGE OF THE DOOR.

Order Plans @

WWW.LDILLIARD.COM

project description by date mark revisions

date project designed drawn checked

date project designed drawn checked

**RRMM ARCHITECTS, PC**  
Donna A. Elliott, Architect 5613  
Robert S. Berz Jr., Architect 7810  
1517 Executive Blvd, Suite 200  
Chesapeake, VA 23320  
(757) 622-2828 / fax (757) 622-6883

project drawing

sheet

**A4**