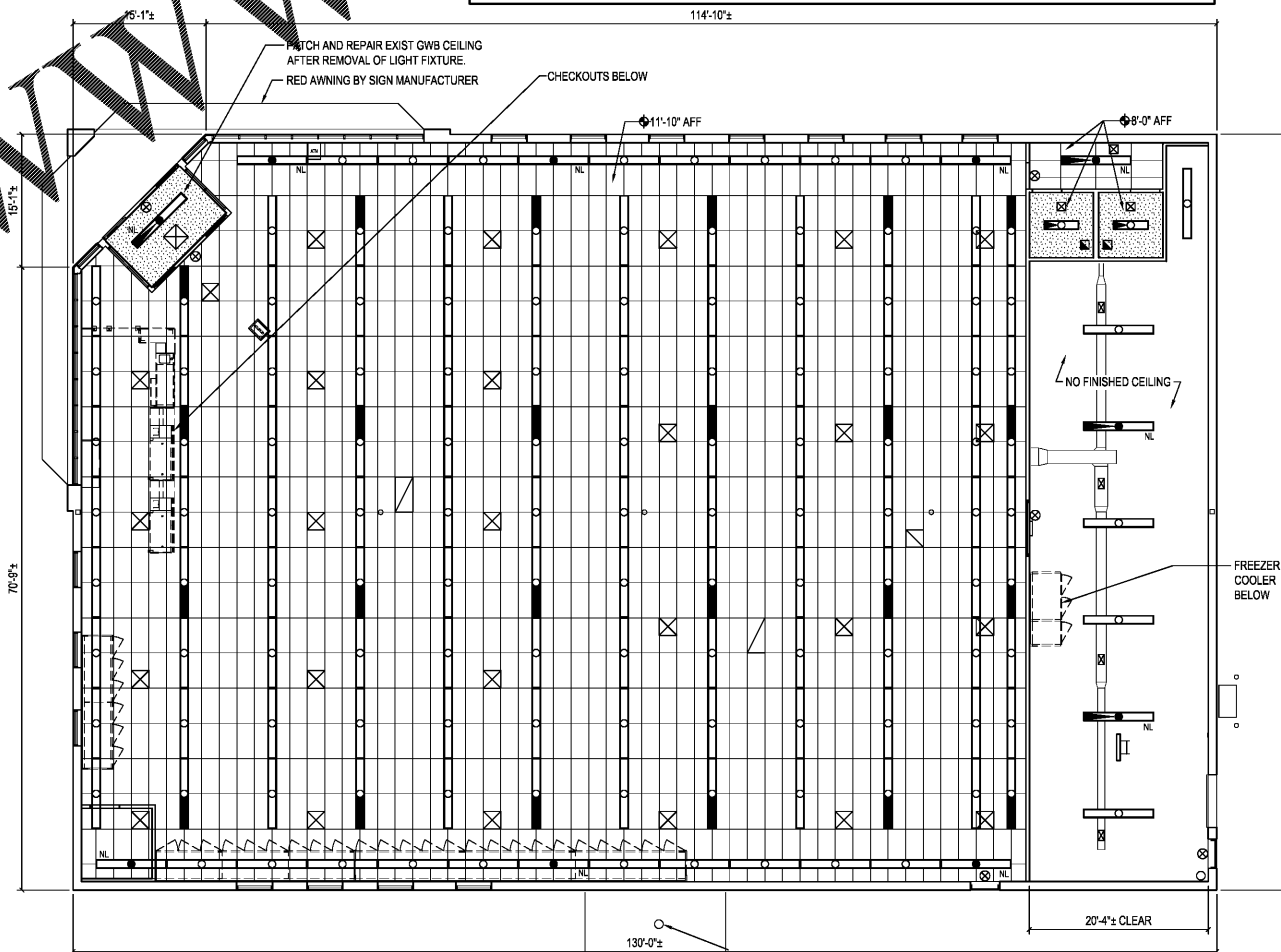


Order Plans @

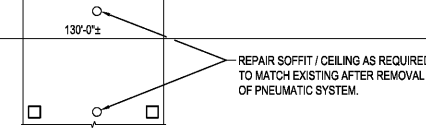
WWW.LINCOLN.COM

- NOTE 1: THE ELECTRICIAN SHALL INSTALL ADDITIONAL #12 WIRE TIE SUPPORTS FROM THE CEILING GRID TO THE STRUCTURE ABOVE FOR SUPPORT OF THE LIGHT FIXTURES CLIPPED ON THE GRID.
 NOTE 2: LIGHT FIXTURES TENANT SUPPLIED / CONTRACTOR INSTALLED.
 NOTE 3: MOUNT LIGHTS 10'-0" AFF IN STOCKROOM.

REFLECTED CEILING LEGEND	
	2'-0"x4'-0" ACOUSTICAL CEILING TILE AND TEE GRID SYSTEM. REFER TO FINISH SCHEDULE.
	GWB - 1/2" GWB OVER 5/8" METAL STUDS 16" OC. REFER TO FINISH SCHEDULE.
	8'-0" STRIP LED LIGHT FIXTURE WITH LAMPS ON LIGHT LIGHT CIRCUIT. SURFACE MOUNT TO GWB AND ACT CEILING. HANG AT 11'-6" AFF SALES AREA / 10'-0" AFF STOCKROOM IF NO CEILING.
	8'-0" STRIP LED LIGHT FIXTURE WITH LAMPS ON EMERGENCY LIGHT CIRCUIT WITH BATTERY PACK. SURFACE MOUNT TO GWB AND ACT CEILING. FOR FIXTURES WITH 4 LAMPS, THE EMERGENCY BATTERY PACK WILL ONLY OPERATE 2 OF THE LAMPS. HANG AT 11'-6" AFF SALES AREA / 10'-0" AFF STOCKROOM IF NO CEILING.
	4'-0" STRIP LED LIGHT FIXTURE WITH LAMPS ON EMERGENCY LIGHT CIRCUIT WITH BATTERY PACK. SURFACE MOUNT TO GWB AND ACT CEILING.
	EXIT LIGHT
	WALL MOUNTED LIGHT FIXTURE
	CEILING HEIGHT ABOVE FINISH FLOOR
	VENTILATION FAN
	DIFFUSER
	RETURN AIR GRILLE
	POWER POLE
	SECURITY MONITOR



REFLECTED CEILING PLAN
 SCALE: 1/8" = 1'-0"



description	
by	
date	revisions
revision	date
2018/11	CCG
2018/11	TEH
2018/11	DAE
date	project
designed	drawn
checked	checked
<p>RRMM ARCHITECTS, P.C. Donna A Elliott, Architect 5813 Robert S Berz Jr, Architect 7810 1317 Executive Blvd, Suite 200 Chesapeake, VA 23320 (757) 622-2828 / fax (757) 622-6883</p>	
<p>FAMILY DOLLAR FAMILY DOLLAR STORE, FDS #791901 SELMA, AL REFLECTED CEILING PLAN AND LEGEND</p>	
project	drawing
sheet	
A2	