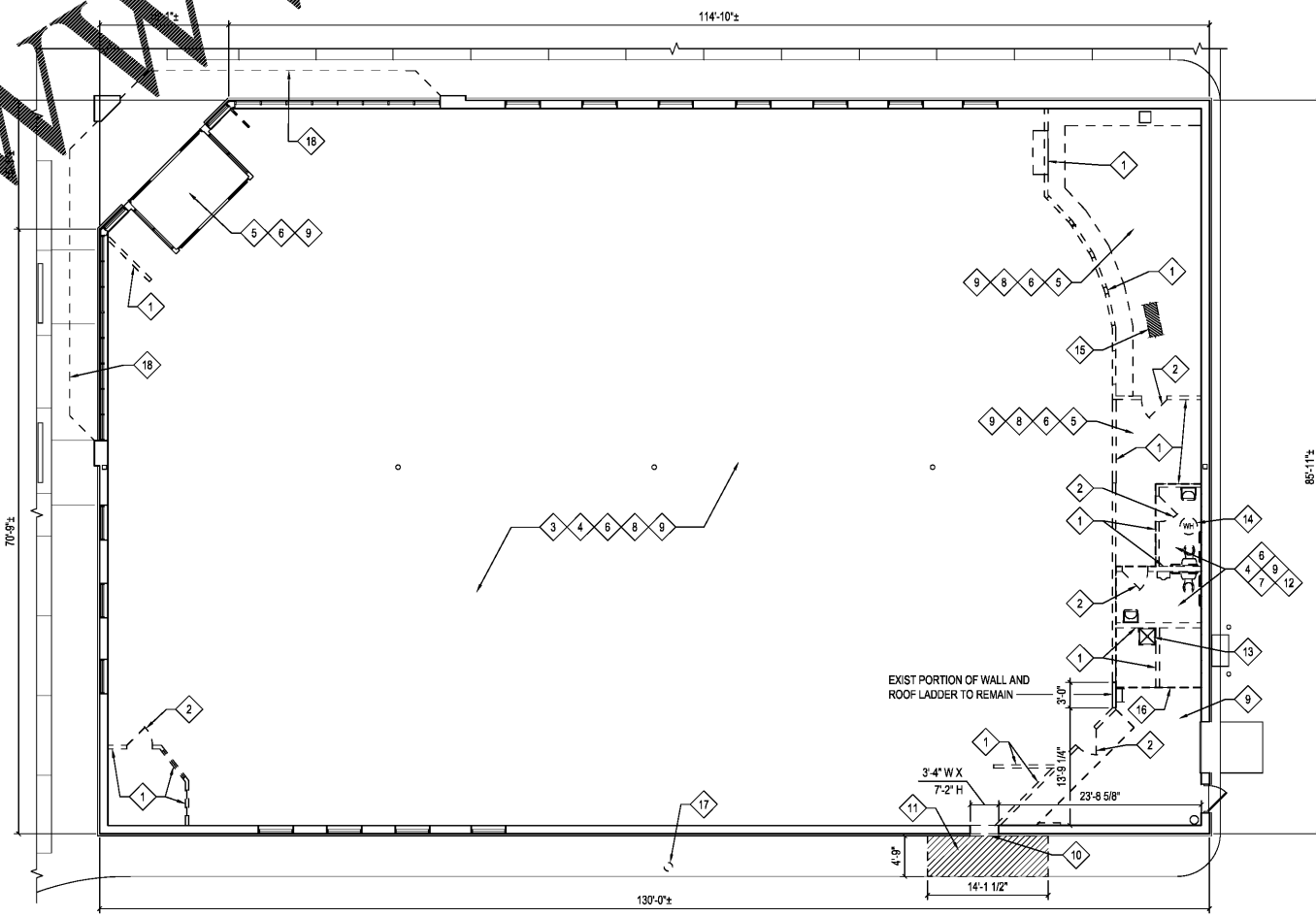


Order Plans @ [www.dollar.com](http://www.dollar.com)

DEMOLITION NOTES	
1 REMOVE PARTITION COMPLETE.	12 REMOVE EXISTING TOILET FIXTURES AND ACCESSORIES COMPLETE. FOR REMOVAL OF PLUMBING FIXTURES SEE PLUMBING SHEETS.
2 REMOVE DOOR AND FRAME COMPLETE.	13 REMOVE EXISTING MOP SINK COMPLETE. FOR REMOVAL OF PLUMBING FIXTURES SEE PLUMBING SHEETS.
3 REMOVE EXISTING WALL FIXTURES AND FINISHES COMPLETE.	14 REMOVE EXISTING WATER HEATER ABOVE COMPLETE. FOR REMOVAL OF PLUMBING FIXTURES SEE PLUMBING SHEETS.
4 FLOORING CONTRACTOR (TENANT HIRED) SHALL REMOVE EXISTING VCT FLOORING COMPLETE. GC SHALL NOT INCLUDE IN BID.	15 REMOVE PORTION OF EXISTING CONCRETE SLAB AS REQUIRED TO TRENCH FLOOR FOR RELOCATION OF PLUMBING FIXTURES. CONTRACTOR SHALL INCLUDE IN BID ALL TRENCHING REQUIRED TO EXTEND PLUMBING IN NEW WORK. CONTRACTOR SHALL AVOID SIZES FLOOR IF POSSIBLE.
5 FLOORING CONTRACTOR (TENANT HIRED) SHALL REMOVE EXISTING CARPET FLOORING COMPLETE. GC SHALL NOT INCLUDE IN BID.	16 REMOVE EXIST MEZZANINE ABOVE COMPLETE. SEE STRUCTURAL FOR ADDITIONAL REQUIREMENTS.
6 REMOVE EXISTING BASE COMPLETE.	17 REMOVE EXISTING PNEUMATIC SYSTEM COMPLETE.
7 REMOVE EXISTING GWB CEILING COMPLETE.	18 SIGN CONTRACTOR TO REMOVE EXISTING BLUE AWNING FABRIC. FRAMEWORK TO REMAIN.
8 REMOVE EXISTING ACT AND GRID COMPLETE.	
9 REMOVE EXISTING LIGHT FIXTURES COMPLETE.	
10 REMOVE PORTION OF EXTERIOR PERIMETER TO EXISTING SLAB AS INDICATED FOR INSTALLATION OF DOOR IN NEW WORK. SEE STRUCTURAL DRAWINGS FOR ADDITIONAL DETAILS.	
11 REMOVE PORTION OF EXISTING CONCRETE COMPLETE FOR INSTALLATION OF RAMP AND LANDING IN NEW WORK. REFER TO STRUCTURAL DRAWINGS.	



DEMOLITION PLAN  
SCALE: 1/8" = 1'-0"



--

	description
	by
	date
	mark
	revisions


**RRMM ARCHITECTS, PC**  
Donna A Elliott, Architect 5613  
Robert S Berz Jr, Architect 7810  
1317 Executive Blvd, Suite 200  
Chesapeake, VA 23320  
(757)622-2628 / fax (757)622-6883

--

	project
	drawing
	sheet

--

**FAMILY DOLLAR**  
FAMILY DOLLAR STORE, FDS #791901  
SELMIA, AL  
DEMOLITION PLAN

D1