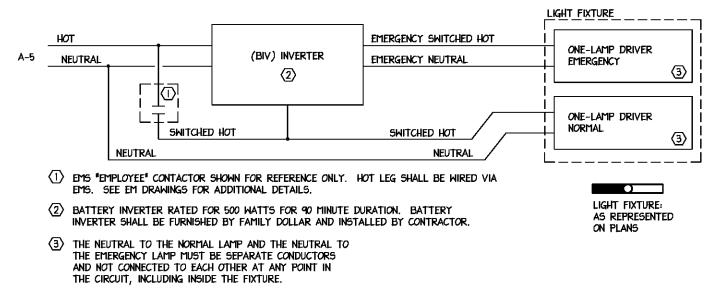


LIGHT FIXTURES SHALL BE SUPPLIED BY FAMILY DOLLAR AND INSTALLED BY CONTRACTOR.

LIGHTING FIXTURE SCHEDULE						
FIXTURE	DESCRIPTION	NUMBER AND TYPE OF LAMPS	WATTS	VOLTS	MOUNTING	NOTES
	8' STRIP LIGHT	(2) 18W LED LINEAR T8 TUBES	36	120	NOTE 6	1,2,3,4,5,6
	8' STRIP EMERGENCY LIGHT WIRE ON INVERTER SYSTEM REFER TO DETAIL 2/E-3.	(2) 18W LED LINEAR T8 TUBES	36	120	NOTE 6	1,2,3,4,5,6
	8' STRIP EMERGENCY LIGHT WITH INTEGRAL 90 MINUTE BATTERY BACKUP	(2) 18W LED LINEAR T8 TUBES	36	120	NOTE 6	1,2,3,4,5,6
	4' STRIP LIGHT	(1) 18W LED LINEAR T8 TUBE	18	120	NOTE 6	1,2,3,4,5,6
	4' STRIP EMERGENCY LIGHT WITH INTEGRAL 90 MINUTE BATTERY BACKUP	(2) 18W LED LINEAR T8 TUBE	36	120	NOTE 6	1,2,3,4,5,6
	INTERIOR EMERGENCY LIGHT (2 HEADS) WITH INTEGRAL 90 MINUTE BATTERY BACKUP	(2) 1W LED	2	120	SURFACE	1,2,4
	EXIT SIGN WITH SINGLE FACE WITH INTEGRAL 90 MINUTE BATTERY BACKUP	LED	5	120	CEILING OR HALL	1,2,4
	EXIT SIGN WITH SINGLE FACE WITH INTEGRAL 90 MINUTE HI-OUTPUT BATTERY BACKUP CONNECT TO EXTERIOR REMOTE HEADS.	LED	5	120	CEILING OR HALL	1,2,4
	EXTERIOR EMERGENCY LIGHT REMOTE HEADS CONNECT TO EXIT SIGN HI-OUTPUT BATTERY BACKUP.	(2) 1W LED	2	120	SURFACE	1,2,4
	EXTERIOR WALL PAK LIGHT NEL-NFTD	LED	70.8	120	HALL MOUNTG. HEIGHT PER ARCHITECTURAL ELEVATIONS.	1,2,4

NOTES:
 1. ALL LAMPS SHALL BE PROVIDED WITH LIGHT FIXTURES.
 2. CONTRACTOR SHALL COORDINATE VOLTAGE OF LIGHT FIXTURE WITH CIRCUIT VOLTAGE.
 3. LIGHT FIXTURES DENOTED BY "NIGHT LIGHT" OR "NL" SHALL REMAIN ON 24V.
 4. CONTRACTOR SHALL PROVIDE ALL NECESSARY SUPPORT HARDWARE AND ADAPTERS FOR EACH LIGHT FIXTURE UNLESS NOTED OTHERWISE.
 5. COORDINATE LIGHT FIXTURE MOUNTING WITH CEILING TYPE. REFER TO ARCHITECTURAL PLANS.
 6. LIGHT FIXTURES IN SALES AREA SHALL BE SURFACE MOUNTED TO BOTTOM OF LAY-IN CEILING AT 10'-6". LIGHT FIXTURES IN THE STOCK ROOM SHALL BE SUSPENDED FROM STRUCTURE USING CADDY SPEED LINK. PORTAIR CADDY SPEED LINK UNIVERSAL SUPPORT SYSTEM INCLUDES LOCKING DEVICE, WIRE ROPE AND SPECIALTY END FITTING. CADDY SPEED LINK SUPPORT SYSTEM SHALL BE FURNISHED WITH LIGHT FIXTURES. FOR STOCK ROOM, SUSPEND BOTTOM OF LIGHT FIXTURE TO 10'-0" AFF. FOR RESTROOMS AND HALL, LIGHT FIXTURES SHALL BE SURFACE MOUNTED TO BOTTOM OF CEILING. FOR LIGHT FIXTURES SURFACE MOUNTED TO LAY-IN CEILING, ATTACH LIGHT FIXTURE TO T-BAR PER NEC 40-36.

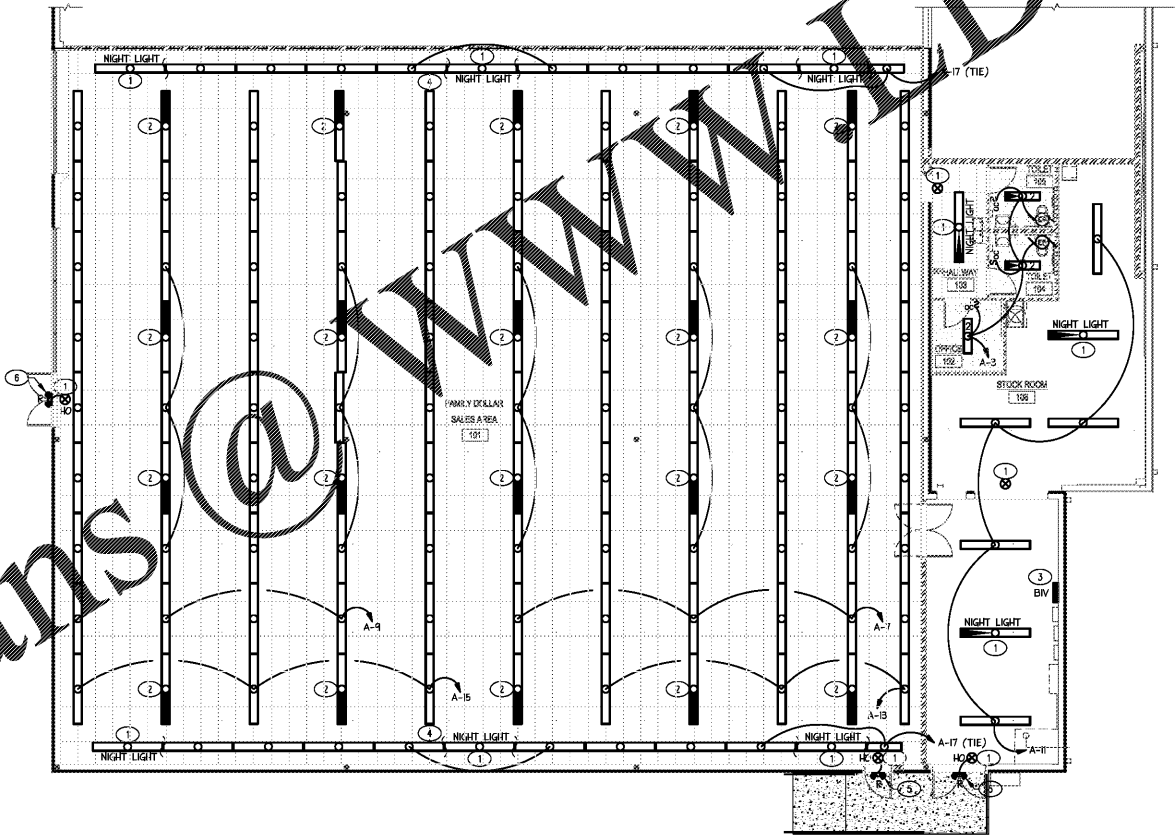


2 SCHEMATIC DIAGRAM: INVERTER WIRING (BIV)
 SCALE: NONE FOR "EMPLOYEE" LIGHTING CIRCUIT A-5

ELECTRICAL LIGHTING SYMBOL LEGEND	
	ARROWHEAD INDICATES NUMBER TO PANEL NOTED.
	SINGLE POLE SWITCH, 20A, 120/177V VOLT, 40" A.F.F. TO CENTER.
	"T" INDICATES 120V, 20A PIVOT RATED TOGGLE SWITCH.
	OCCUPANCY SENSOR SWITCH WITH OVERRIDE SWITCH, MOUNTED 46" A.F.F. TO CENTER. PROVIDE SENSOR SWITCH MODEL #MSD-1H.
	CEILING EXHAUST FAN. PROVIDE DISCONNECTING MEANS AS REQUIRED BY CODE.

- TAGGED NOTES (LIGHTING PLAN):
- ALL EXIT SIGNS, NIGHT LIGHTS, AND NIGHT LIGHTS WITH INTEGRAL BATTERY BACKUP SHALL BE CIRCUITED TO PANEL "A", CIRCUIT 1. WIRING NOT SHOWN FOR DRAWING CLARITY.
 - NOTED FIXTURE SHALL HAVE ONE LAMP CIRCUITED TO INVERTER AND ONE LAMP CIRCUITED TO NORMAL POWER. CIRCUIT A-5 SHALL BE USED FOR THESE FIXTURES AND SHALL BE ON "EMPLOYEE" CONTACTOR OF THE ENERGY MANAGEMENT SYSTEM. SEE INVERTER WIRING DIAGRAM ON THIS SHEET.
 - BATTERY INVERTER FURNISHED BY FAMILY DOLLAR AND INSTALLED BY CONTRACTOR. REFER TO DETAIL 2/E-3 SHEET FOR HIRING INFORMATION. INSTALL PER MANUFACTURER'S INSTALLATION INSTRUCTIONS.
 - DISTANCE BETWEEN END OF ROOM AND PERIMETER LIGHTS SHALL BE MAXIMUM 60".
 - EXTERIOR REMOTE EMERGENCY LIGHT (2 HEADS) MOUNTED CENTERED ABOVE DOOR AT 7'-0". EXTERIOR EMERGENCY LIGHT SHALL BE WIRED TO EMERGENCY EXIT LIGHT HI-OUTPUT BATTERY BACKUP.
 - EXTERIOR REMOTE EMERGENCY LIGHT (2 HEADS) MOUNTED TIGHT TO ENTRY SIDE OF EXTERIOR EMERGENCY LIGHT SHALL BE HIRED TO NEW EMERGENCY EXIT SIGN HI-OUTPUT BATTERY BACKUP.

GENERAL NOTES:
 1. CONTRACTOR SHALL INSTALL ADDITIONAL WIRE SUPPORTS FROM CEILING GRID TO THE STRUCTURE ABOVE FOR SUPPORT OF THE LIGHT FIXTURES CLIPPED ON THE GRID.



1 ELECTRICAL LIGHTING PLAN
 1/8"=1'-0"

EXTERIOR LIGHTING/PYLON SIGN NOTE:
 ALL EXTERIOR BUILDING LIGHTING, UNDER CANOPY LIGHTING, SITE LIGHTING (IF PRESENT) AND PYLON SIGN IS EXISTING TO REMAIN AND IS TO BE POWERED BY LANDLORD'S NEW HOUSE PANEL. CONTRACTOR SHALL VERIFY OPERATION OF ALL EXISTING EXTERIOR LIGHTING IN THE VICINITY OF THE FAMILY DOLLAR SPACE AND PYLON SIGN. LANDLORD SHALL BE CONTACTED FOR MAINTENANCE/REPAIR OF ANY EXISTING EXTERIOR LIGHTING OR PYLON SIGN THAT IS NOT OPERATING PROPERLY.

LIGHTING DEMOLITION NOTES:
 REMOVE ALL EXISTING INTERIOR LIGHTING FIXTURES, EXIT SIGNS AND EMERGENCY LIGHTING NOT SHOWN AS EXISTING TO REMAIN OR NOTED AS EXISTING TO REMAIN. REMOVE ALL ASSOCIATED WIRING AND DEVICES. FIELD COORDINATE FINAL SCOPE OF DEMOLITION WORK WITH GC PRIOR TO BEGINNING CONSTRUCTION.

Order Plans

WWW.DIline.com

ENGINEER OF RECORD:
 J. CORBETT THOMAS, P.E.
 2100 DILWORTH RD EAST
 CHARLOTTE, NC 28203
 PH (704) 333-1020
 Corbett@CorbettEngineering.com

JOHN C. THOMSON
 REGISTERED PROFESSIONAL ENGINEER
 STATE OF TENNESSEE
 2-5-20

date	proj'd	desig'd	drawn	checked
1-1-2018	arbas	act	act	act

RRMM ARCHITECTS, P.C.
 1317 Executive Blvd, Suite 200
 Chesapeake, VA 23320
 (757) 522-2522 / fax (757) 522-2822

FAMILY DOLLAR
 FAMILY DOLLAR STORE, EDS #791567
 501 TENNESSEE AVE NORTH - PARKING, TN 38363
 ELECTRICAL UPFIT LIGHTING PLAN AND DETAILS

sheet E-3